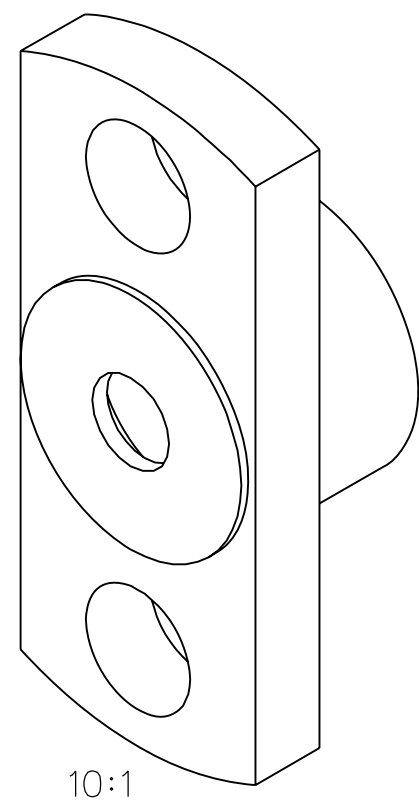
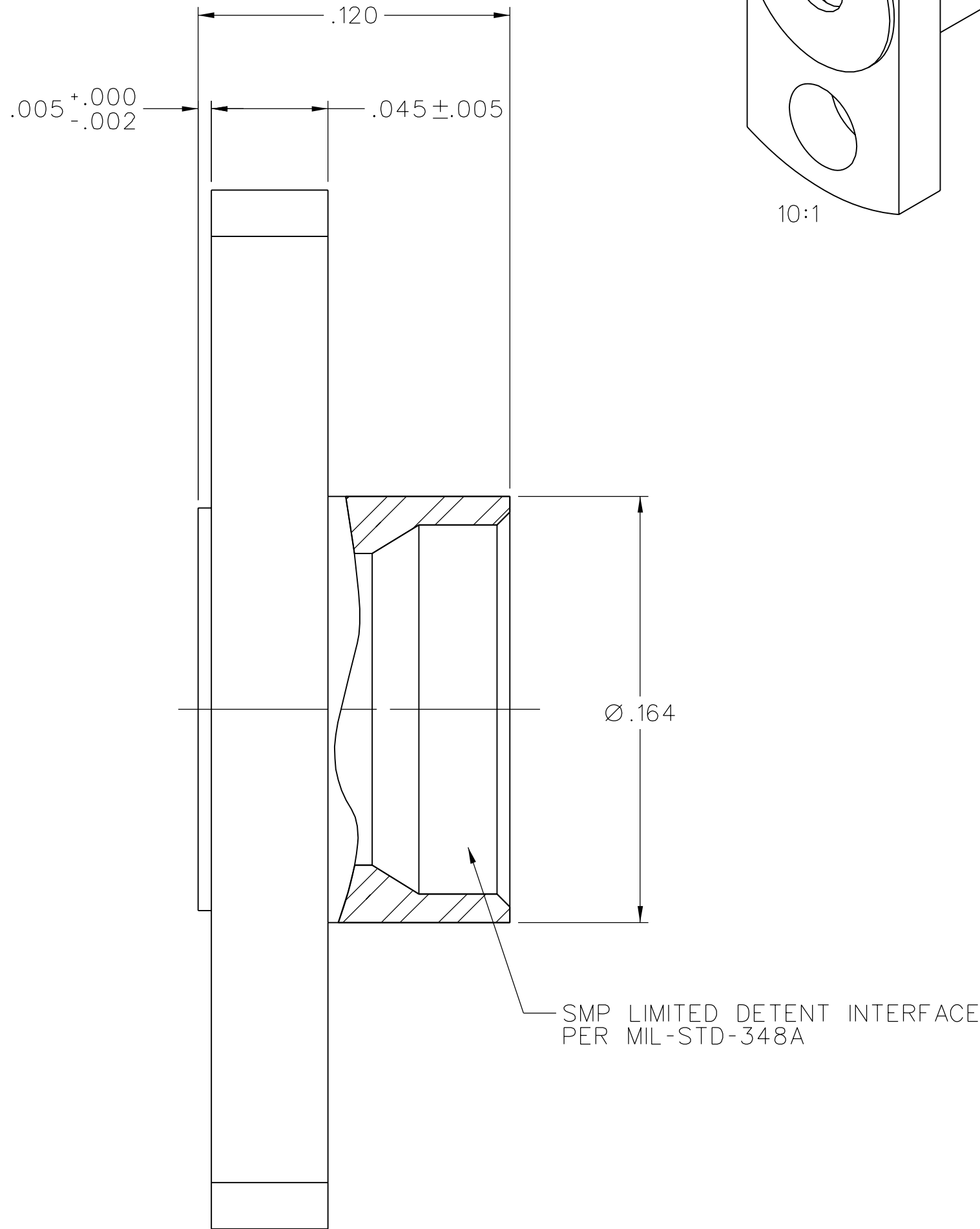
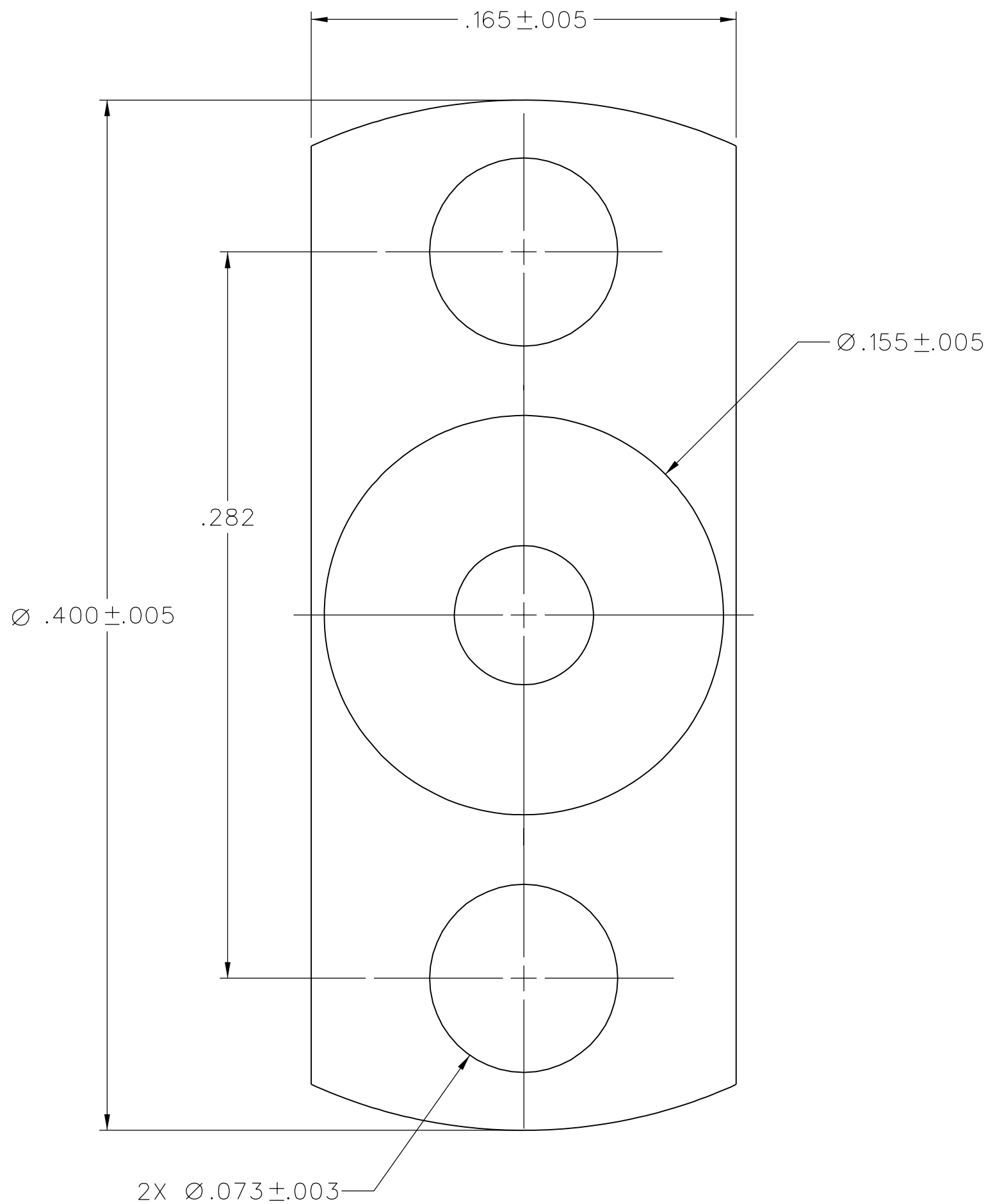


PART NUMBER	SHROUD MATERIAL
127-1701-602	STAINLESS STEEL PASSIVATED



DRAWING NO.									
C - 127-1701-601/610									
0	REVISIONS								
ENGINEERING RELEASE									
1	1-10-07	P A T	J R K	P D W	M J U	2-17-07 ECN 50898			
VERSION UPDATE									
***** * REVISION NUMBER FOLLOWED BY AN ALPHA * * CHARACTER INDICATES DRAWING CLARIFI- * * CATION OR PART NUMBER ADDITION ONLY. * *****									
1a	11-12-07	P A T	J R K	R B	M J U	J C N	11-13-07 ECN 51291		

NOTES:

1. SPECIFICATIONS:

INTERFACE DIMENSIONS: IN ACCORDANCE WITH MIL-STD-348A, SERIES SMP, LIMITED DETENT  
CONTACT RESISTANCE: INITIAL 2.0 MILLIOHM MAX, AFTER ENVIRONMENTAL NOT APPLICABLE

MECHANICAL:

ENGAGEMENT FORCE: 10 POUNDS MAX  
DISENGAGEMENT FORCE: 2 POUNDS MIN  
DURABILITY: 500 CYCLES MIN

ENVIRONMENTAL:


(MEETS OR EXCEEDS THE APPLICABLE PARAGRAPH OF DSCC DWG NO. 94007)  
OPERATING TEMPERATURE: -65°C TO 165°C  
THERMAL SHOCK: MIL-STD-202, METHOD 107, CONDITION B, EXCEPT 165°C HIGH TEMP  
CORROSION: MIL-STD-202, METHOD 101, CONDITION B  
VIBRATION, HIGH FREQUENCY: MIL-STD-202, METHOD 204, CONDITION D  
VIBRATION, RANDOM: MIL-STD-202, METHOD 214, CONDITION F

CUSTOMER DRAWING

THIS DRAWING TO BE INTERPRETED  
PER ASME Y 14.5M - 1994

"μSTATION"

COMPANY CONFIDENTIAL

TOLERANCE UNLESS OTHERWISE SPECIFIED		DRAWN BY PAT	DATE 11-30-06	 <b>Cinch</b> CONNECTIVITY SOLUTIONS a bel group	Cinch Connectivity Solutions P.O. Box 1732 Waseca, MN 56093 1-800-247-8256	
DECIMALS .XX	mm	CHECKED BY PDW	DATE 2-16-07		TITLE SMP LIMITED DETENT FLANGE MOUNT SHROUD	
.XXX REF		APPROVED BY JRK	DATE 2-16-07			
MATL		RELEASE DATE	2-17-07			
FINISH		U/M	INCH	SCALE	20:1	SHEET 2 OF 2
DRAWING NO. C - 127-1701-601/610						

# Mouser Electronics

Authorized Distributor

Click to View Pricing, Inventory, Delivery & Lifecycle Information:

[Cinch Connectivity Solutions:](#)

[127-1701-602](#)