

# Customer Information Sheet

DRAWING No.: M50-312XX45

SHEET 2 OF 2

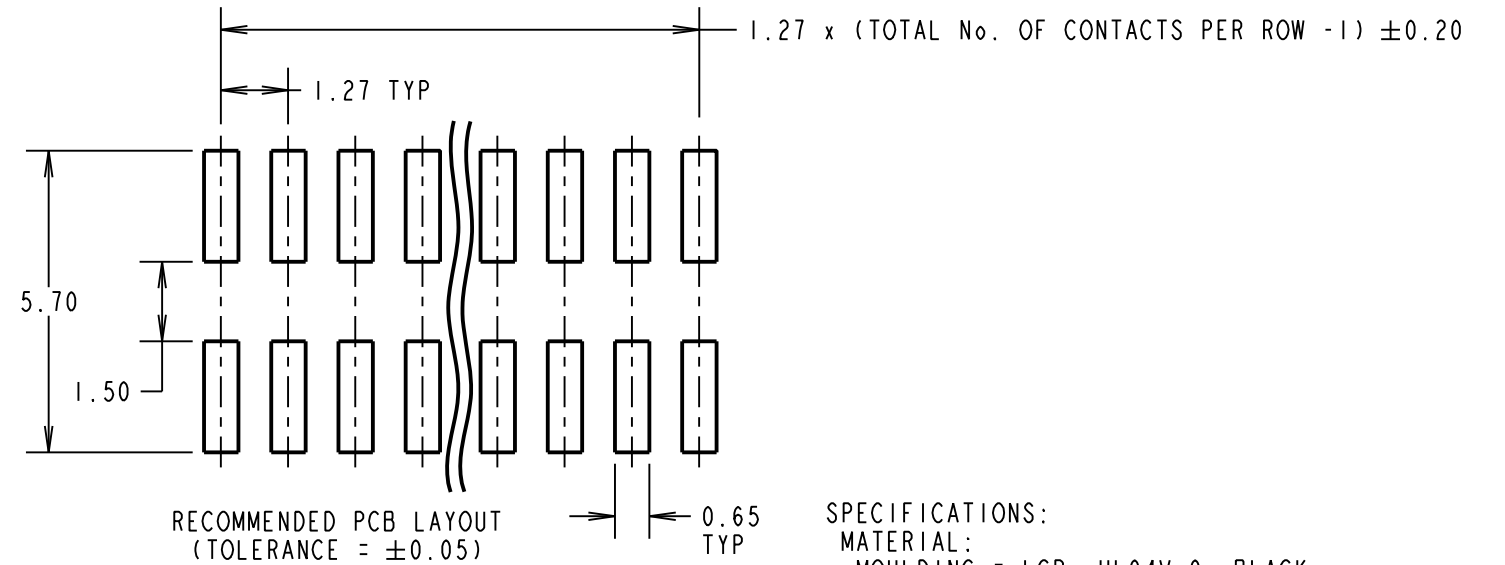
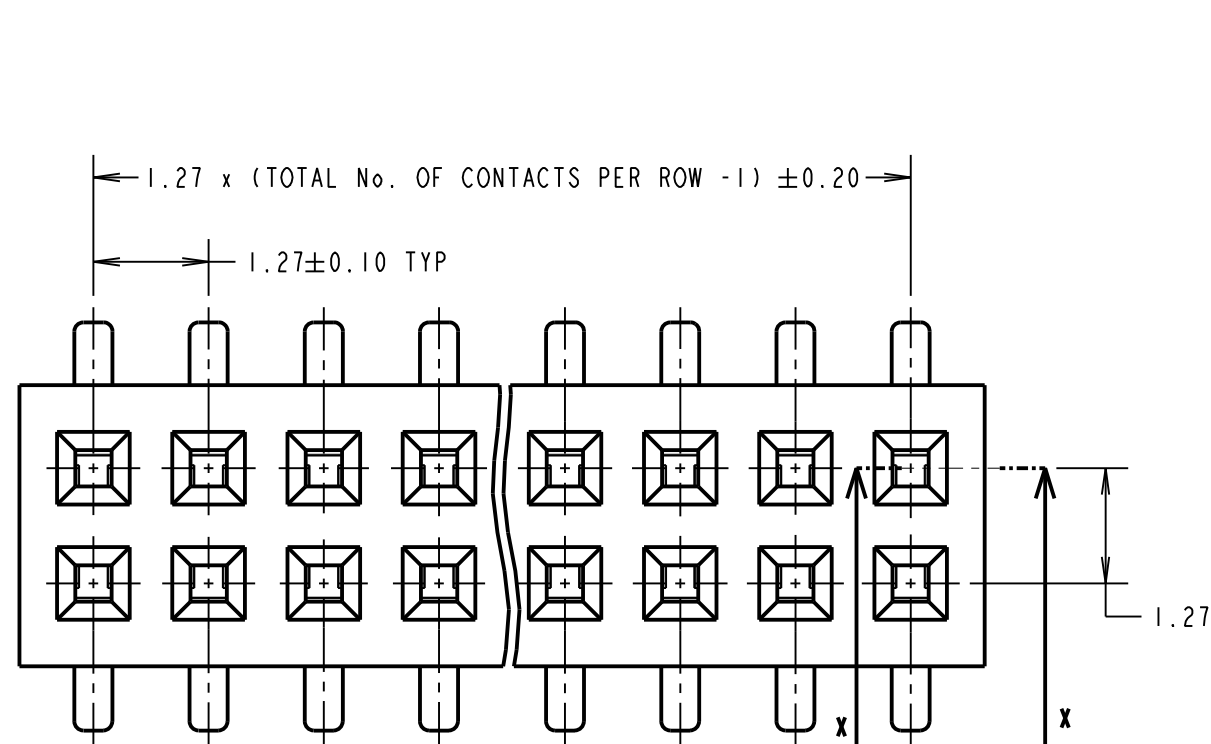
IF IN DOUBT - ASK

©

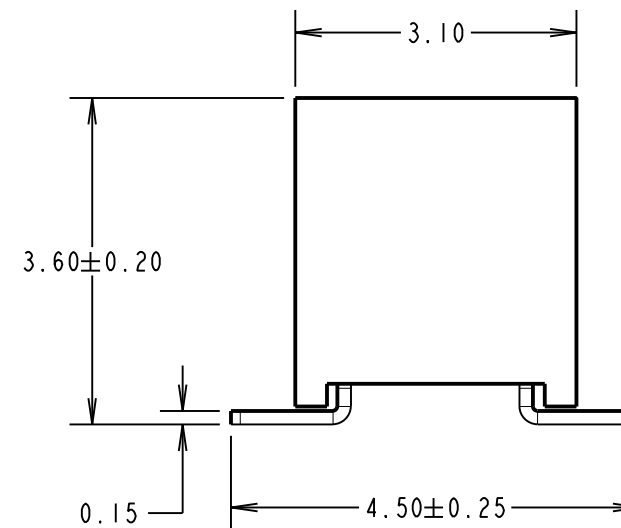
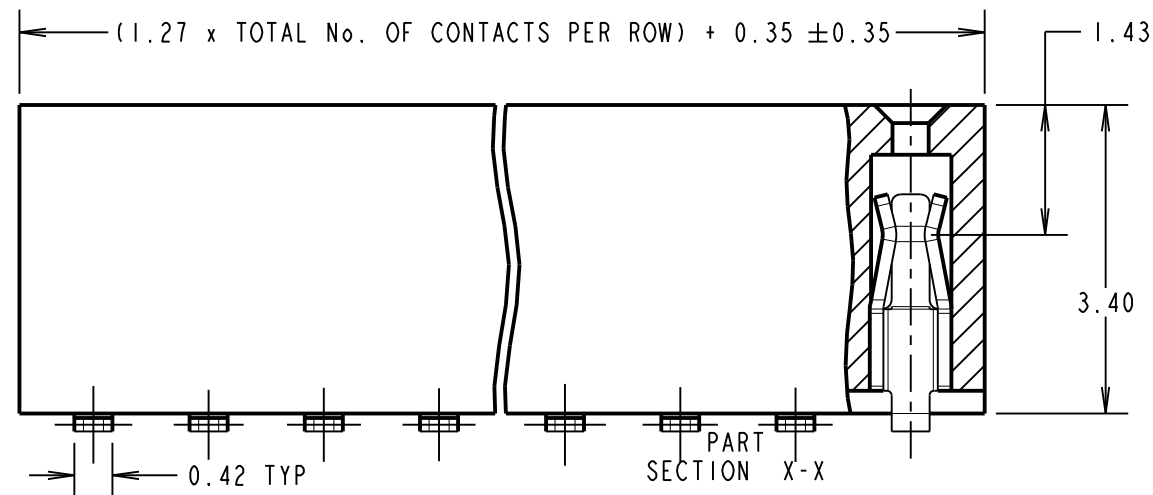
NOT TO SCALE

THIRD ANGLE PROJECTION

ALL DIMENSIONS IN mm



**SPECIFICATIONS:**  
**MATERIAL:**  
 MOULDING = LCP, UL94V-0, BLACK  
 CONTACT = PHOSPHOR BRONZE  
**FINISH:**  
 CONTACT = GOLD FLASH OVER NICKEL  
**ELECTRICAL:**  
 CURRENT RATING = 1A  
 VOLTAGE PROOF = 300V AC, 500V DC FOR ONE MINUTE  
 CONTACT RESISTANCE = 30mΩ MAX  
 INSULATION RESISTANCE = 1000MΩ MIN  
**MECHANICAL:**  
 DURABILITY = 100 CYCLES MIN  
 INSERTION FORCE = 2N MAX PER CONTACT  
 WITHDRAWAL FORCE = 0.15N MIN PER CONTACT  
**ENVIRONMENTAL:**  
 OPERATING TEMPERATURE = -40°C TO +105°C  
**PACKING:**  
 TUBE  
 FOR COMPLETE SPECIFICATION, SEE COMPONENT SPECIFICATION C029XX (LATEST ISSUE)



NOTE:  
 1. ALL TOLERANCES ARE ±0.15, UNLESS OTHERWISE STATED.

**OBSOLETE**  
 No. of contacts per row = 16 to 19, 21 to 24, 26 to 29, 31 to 49  
 Last Time Buy = 15th June 2018

ORDER CODE:  
**M50-312XX45**  
 No. OF CONTACTS PER ROW:  
**03 to 15, 20, 25, 30, 50**  
 FINISH:  
 GOLD FLASH OVER NICKEL

SB	10	18.01.13	11828
NAME	ISS.	DATE	C/NOTE
APPROVED:		S.BENNETT	
CHECKED:		S.FLOWER	
DRAWN:		J. ENRIGHT	
CUSTOMER REF.:			
ASSEMBLY DRG:			

**HARWIN**  
 www.harwin.com  
 technical@harwin.com

THIS DRAWING AND ANY INFORMATION OR DESCRIPTIVE MATTER SET OUT HEREON ARE CONFIDENTIAL AND COPYRIGHT PROPERTY OF THE HARWIN GROUP AND MUST NOT BE DISCLOSED, LOANED, COPIED OR USED FOR MANUFACTURING, TENDERING OR FOR ANY OTHER PURPOSE WITHOUT THEIR WRITTEN PERMISSION.

**TOLERANCES**  
 X = ±1mm  
 X.X = ±0.25mm  
 X.XX = ±0.10mm  
 X.XXX = ±0.01mm  
 ANGLES = ±5°  
 UNLESS STATED

**MATERIAL:**  
 SEE ABOVE  
**FINISH:**  
 SEE ABOVE  
**S/AREA:**  
 mm<sup>2</sup>

**TITLE:**  
 1.27mm PITCH DIL VERTICAL SMT SOCKET ASSY  
**DRAWING NUMBER:**  
**M50-312XX45**  
 SHT 2 OF 2

# Mouser Electronics

Authorized Distributor

Click to View Pricing, Inventory, Delivery & Lifecycle Information:

## Harwin:

[M50-3120845](#) [M50-3121245](#) [M50-3121045](#) [M50-3120645](#) [M50-3121845](#) [M50-3121445](#) [M50-3124445](#) [M50-3124045](#) [M50-3124845](#) [M50-3124645](#) [M50-3124245](#) [M50-3124145](#) [M50-3124945](#) [M50-3124545](#) [M50-3124345](#) [M50-3124745](#) [M50-3125045](#) [M50-3122345](#) [M50-3123545](#) [M50-3122745](#) [M50-3123945](#) [M50-3123145](#) [M50-3123745](#) [M50-3122545](#) [M50-3122145](#) [M50-3123345](#) [M50-3122945](#) [M50-3122845](#) [M50-3122045](#) [M50-3123245](#) [M50-3123645](#) [M50-3122445](#) [M50-3122245](#) [M50-3123445](#) [M50-3123845](#) [M50-3122645](#) [M50-3123045](#) [M50-3121145](#) [M50-3121945](#) [M50-3120745](#) [M50-3121545](#) [M50-3120345](#) [M50-3120945](#) [M50-3121345](#) [M50-3120545](#) [M50-3121745](#) [M50-3121645](#) [M50-3120445](#)