

# G-Series

## TOGGLE SWITCHES

General purpose workhorses with options tailored to meet most any need. Ratings to 20A 277VAC, international approvals, various actuator, bushing, termination, and circuit choices allow this toggle switch to easily integrate into a variety of different applications. The G-Series is appropriate for usage in low voltage DC applications.



### Resources:

Download 3D CAD Files

[IGS >](#) [STP >](#)

### Product Highlights:

- ♦ Ratings to 20A 277VAC available
- ♦ Metal bat or nylon bat/paddle actuator styles
- ♦ UL, CSA and VDE approvals for select circuits
- ♦ Suitable for low voltage 12/24V DC

### Typical Applications:

- ♦ Marine
- ♦ Food Service
- ♦ Generator
- ♦ Industrial Control
- ♦ Office Automation



**Carling Technologies, Inc.**  
60 Johnson Avenue, Plainville, CT 06062  
Email: [sales@carlingtech.com](mailto:sales@carlingtech.com)  
Application Support: [team2@carlingtech.com](mailto:team2@carlingtech.com)  
Phone: 860.793.9281 Fax: 860.793.9231

[www.carlingtech.com](http://www.carlingtech.com)

### Dielectric Strength

UL/CSA: 1000V - live to dead metal parts & opposite polarity

VDE: 4000V - live to dead metal parts; 1250V - opposite polarity & across open contacts

### Electrical Life

50,000 cycles - maintained  
25,000 cycles - momentary

### Mechanical Life

100,000 cycles

### Operating Temperature

32°F to 185°F (0° to 85°C)

# 2GM51 - 73

<sup>1</sup> Base Part Number

<sup>2</sup> Actuator Style

## 1 BASE PART NUMBER: SERIES / CIRCUITRY / RATING / TERMINATION <sup>3</sup>

Single Pole in Double Pole base

10A 250VAC, 15A 125VAC, 3/4 HP 125-250VAC

solder lug	.250 tab	screw term.	
2GA50	2GA51	2GA54	On-None-Off
6GA5A	6GA5B	6GA5E	(On)-None-Off
6GA5L	6GA5M	6GA5S	On-None-(Off)
2GB50	2GB51	2GB54	On-None-On
6GB5A	6GB5B	6GB5E	On-None-(On)
2GC50	2GC51	2GC54	On-Off-On
6GC5A	6GC5B	6GC5E	On-Off-(On)
6GC5L	6GC5M	6GC5S	(On)-Off-(On)

Double Pole

solder lug	.250 tab	screw term.
2GK50	2GK51	2GK54
6GK5A	6GK5B	6GK5E
6GK5L	6GK5M	6GK5S
2GL50	2GL51	2GL54
6GL5A	6GL5B	6GL5E
2GM50	2GM51	2GM54
6GM5A	6GM5B	6GM5E
6GM5L	6GM5M	6GM5S

10A 250VAC, 15A 125VAC, 12 (6)A 250VAC T85/55 ENEC/VDE Approved <sup>1</sup>

2GA90	2GA91	-	On-None-Off	2GK90	2GK91
2GB90	2GB91	-	On-None-On	2GL90	2GL91
2GC90	2GC91	-	On-Off-On	2GM90	2GM91

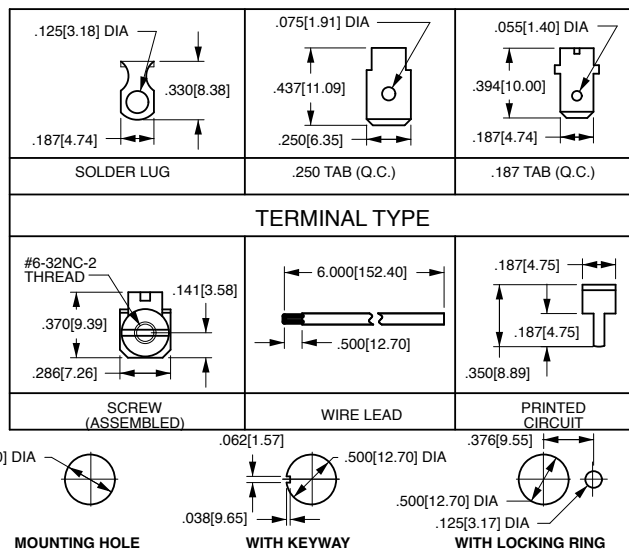
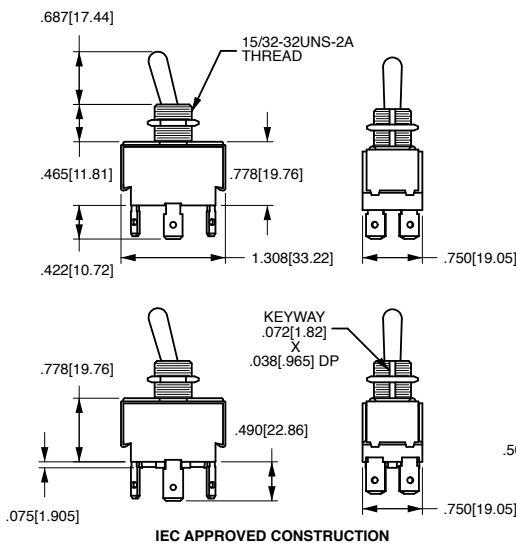
Additional ratings up to 20A 125VAC, 12A 250VAC, 1HP 120-240 VAC available. Consult factory for specifics.

## 2 ACTUATOR STYLE <sup>4</sup>

	unsealed	sealed	toggle length	bushing length
BAT	73	78	0.687	0.465
PADDLE <sup>5</sup>	NBL3	NBL8	0.687	0.465
BAT <sup>2</sup>	D-3B-B	-	0.687	0.379
PADDLE <sup>2</sup>	-	D-4B-B	0.687	0.379

### Notes:

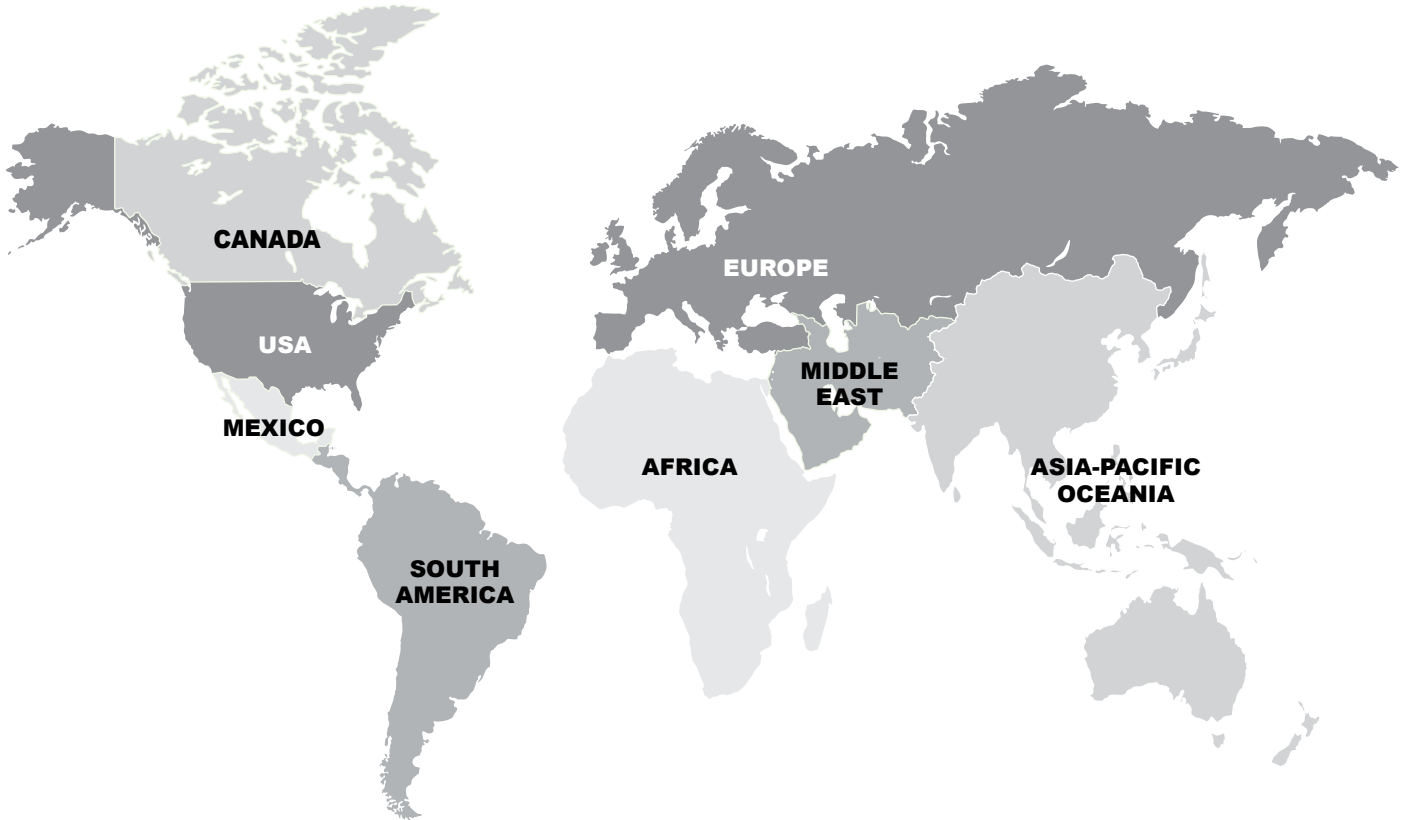
- Not available with 73 or NBL3 style toggles, T55 with 78 and NBL8 style toggles.
- All nylon bushing and toggle.
- Consult factory for .187 tab, wire lead and combination screw/tab/solder lug termination callouts.
- Additional actuator options available. Consult factory.
- Nylon toggle with black ebanol plated bushing.
- ( ) Indicates momentary function.



\*Manufacturer reserves the right to change product specification without prior notice.

## Authorized Sales Representatives and Distributors

Click on a region of the map below to find your local representatives and distributors or visit [www.carlingtech.com/findarep](http://www.carlingtech.com/findarep).



## About Carling

Founded in 1920, Carling Technologies is a leading manufacturer of electrical and electronic switches and assemblies, circuit breakers, electronic controls, power distribution units, and multiplexed power distribution systems. With four ISO registered manufacturing facilities and technical sales offices worldwide, Carling Technologies Sales, Service and Engineering teams do much more than manufacture electrical components, they engineer powerful solutions! To learn more about Carling please visit [www.carlingtech.com/company-profile](http://www.carlingtech.com/company-profile).

To view all of Carling's environmental, quality, health & safety certifications please visit [www.carlingtech.com/environmental-certifications](http://www.carlingtech.com/environmental-certifications)

## **Worldwide Headquarters**

Carling Technologies, Inc.  
60 Johnson Avenue, Plainville, CT 06062  
**Phone:** 860.793.9281 **Fax:** 860.793.9231  
**Email:** sales@carlingtech.com

**Northern Region Sales Office:** nrsm@carlingtech.com  
**Southeast Region Sales Office:** sersm@carlingtech.com  
**Midwest Region Sales Office:** mrrsm@carlingtech.com  
**West Region Sales Office:** wrsm@carlingtech.com  
**Latin America Sales Office:** larsm@carlingtech.com

## **Asia-Pacific Headquarters**

Carling Technologies, Asia-Pacific Ltd.,  
Suite 1607, 16/F Tower 2, The Gateway,  
Harbour City, 25 Canton Road,  
Tsimshatsui, Kowloon, Hong Kong  
**Phone:** Int + 852-2737-2277 **Fax:** Int + 852-2736-9332  
**Email:** sales@carlingtech.com.hk

**Shenzhen, China:** shenzhen@carlingtech.com  
**Shanghai, China:** shanghai@carlingtech.com  
**Pune, India:** india@carlingtech.com  
**Kaohsiung, Taiwan:** taiwan@carlingtech.com  
**Yokohama, Japan:** japan@carlingtech.com

## **Europe | Middle East | Africa Headquarters**

Carling Technologies LTD  
4 Airport Business Park, Exeter Airport,  
Clyst Honiton, Exeter, Devon, EX5 2UL, UK  
**Phone:** Int + 44 1392.364422 **Fax:** Int + 44 1392.364477  
**Email:** ltd.sales@carlingtech.com

**Germany:** gmbh@carlingtech.com  
**France:** sas@carlingtech.com



**Carling Technologies®**

Innovative Designs. Powerful Solutions.

# Mouser Electronics

Authorized Distributor

Click to View Pricing, Inventory, Delivery & Lifecycle Information:

## Carling Technologies:

[6GM5H-73](#) [6GM5Y-73](#) [6GL5H-73](#) [2GK57-73](#) [6GK5H-73](#) [2GK50-73](#) [2GB51-73](#) [2GK54-73](#) [2GL54-73](#) [2GM53-73](#)  
[2GM54-73](#) [6GB5B-NBL8](#) [2GK65-73](#) [6GM5M-NBL3](#) [2GB51-NBL3](#) [2GM51-73](#) [2GK51-73](#) [6GM5M-73](#) [6GB5B-73](#)  
[2GA51-73](#) [2GA51-NBL8](#) [2GA56-73](#) [2GA721-73](#) [2GA724-73](#) [2GA735-73/DUST COVER](#) [2GC51-73](#) [2GC51-NBL8](#)  
[2GC56-73](#) [2GE51-73](#) [2GE54-73](#) [2GG51-73](#) [2GK01-73](#) [2GK53-73](#) [2GK721-D-3B-B](#) [2GL50-73](#) [2GL51-63](#) [2GL51-](#)  
[73](#) [2GL51-78](#) [2GM50-73](#) [2GM51-78](#) [2GM51-NBL8](#) [2GM56-73](#) [2GM90-78](#) [2GO54-73](#) [6GA5B-73](#) [6GA5M-73](#)  
[6GC6B-NBL3](#) [6GG5B-73](#) [6GG5E-73](#) [6GL5B-73](#) [6GM5B-73](#) [6GM5B-78](#) [6GM5E-A3](#) [6GM5M-78](#) [6GM5S-73](#)  
[2GM57-73](#) [6GK5Y-73](#) [2GL57-73](#) [2GM721-D-4B-B](#) [6GK5A-73](#) [6GO54-73](#) [2GK04 73](#) [2GA91-68](#) [2GC56-78/HDW](#)  
[BULK](#) [2GK57-73-XA](#) [2GL57-73-XA](#) [2GM57-73-XA](#) [6GK5H-73-XA](#) [6GK5Y-73-XA](#) [6GL5H-73-XA](#) [6GM5H-73-XA](#)  
[6GM5Y-73-XA](#) [2GM54-78](#) [2GL90-78](#) [2GL50-63](#) [2GG50-73](#) [6GM5L-NBL8](#) [6GA5MD2BB](#) [2GO51-73](#) [2GK724-D-3B-](#)  
[B](#) [2GM731-78](#) [2GK50-D-1B-B](#) [2GM50-D-4B-B](#) [6GM5U-78](#) [2GL56-78](#) [6GM5T-73](#) [2GB51-NRD8XTE1](#) [2GB51-D-2B-](#)  
[B](#) [2GB54-D-3R-B](#) [2GB51-D-3B-B](#) [2GB50-MB-73XZI3](#) [2GB51-D-4B-BXJM4](#) [2GK725-D-3B-B-XDI1](#) [2GK731-78/272-](#)  
[06747](#) [2GL91-68](#) [2GL51-78-XLE1](#) [2GK71-62-XSSE2](#) [2GM04-78/2HEX](#) [2GK721-D-3B-B/272-06747](#) [2GK724-D-4B-](#)  
[B-XG](#)