

KHz RANGE CRYSTAL UNIT

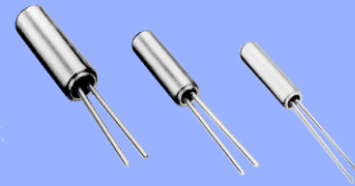
C - TYPE
C - 2 TYPE / C - 4 TYPE

- Frequency range : 32.768 kHz (20 kHz~120 kHz)
- Thickness : ϕ 1.2 mm ~ ϕ 2.0 mm Max.
- Overtone order : Fundamental
- Applications : Clock and Microcomputer

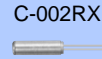


Product Number (please contact us)

- C-002RX : Q11C02RX1xxxx00
- C-004R : Q11C004R1xxxx00
- C-005R : Q11C005R1xxxx00
- C-2 TYPE : Q12C20001xxxx00
- C-4 TYPE : Q12C40001xxxx00



Actual size



C-002RX
C-2 TYPE

C-004R
C-4 TYPE

C-005R

Specifications for C-TYPE (characteristics)

Item	Symbol	C-002RX	C-004R	C-005R	Conditions / Remarks
Nominal frequency range	f_nom	32.768 kHz			
Storage temperature	T_stg	-20 °C to +70 °C			Storage as single product.
Operating temperature	T_use	-10 °C to +60 °C			
Level of drive	DL	1.0 μ W Max.			
Frequency tolerance (standard)	f_tol	$\pm 20 \times 10^{-6}$			+25 °C, DL=0.1 μ W
Turnover temperature	Ti	+25 °C \pm 5 °C			
Parabolic coefficient	B	$-0.04 \times 10^{-6} / ^\circ\text{C}^2$ Max.			
Load capacitance	CL	6 pF to ∞			Please specify
Motional resistance (ESR)	R ₁	50, 60 k Ω Max. (30 k Ω Typ.)	50 k Ω Max. (30 k Ω Typ.)	50 k Ω Max. (37 k Ω Typ.)	
Motional capacitance	C ₁	2.0 fF	2.0 fF	1.9 fF Typ.	
Shunt capacitance	C ₀	0.85 pF	0.85 pF	0.75 pF Typ.	
Frequency aging	f_age	$\pm 3 \times 10^{-6} / \text{year}$ Max.			+25 °C, First year

Specifications for C-2 TYPE C-4 TYPE (characteristics)

Item	Symbol	C-2 TYPE	C-4 TYPE	Conditions / Remarks
Nominal frequency range	f_nom	20 kHz to 120 kHz	32 kHz to 120 kHz	Please contact us about available frequencies.
Storage temperature	T_stg	-20 °C to +70 °C		Storage as single product.
Operating temperature	T_use	-10 °C to +60 °C		
Level of drive	DL	1.0 μ W Max.		
Frequency tolerance (standard)	f_tol	$\pm 20 \times 10^{-6}, \pm 50 \times 10^{-6}, \pm 100 \times 10^{-6}$	$\pm 50 \times 10^{-6}, \pm 100 \times 10^{-6}$	+25 °C, DL=0.1 μ W
Turnover temperature	Ti	+25 °C \pm 5 °C		
Parabolic coefficient	B	$-0.04 \times 10^{-6} / ^\circ\text{C}^2$ Max.		
Load capacitance	CL	6 pF to ∞		Please specify
Motional resistance (ESR)	R ₁	As per table below		
Motional capacitance	C ₁	4.0 fF to 0.6 fF		
Shunt capacitance	C ₀	2.0 pF to 0.6 pF		
Frequency aging	f_age	$\pm 5 \times 10^{-6} / \text{year}$ Max.		+25 °C, First year

Motional resistance C-2 TYPE

Frequency	20 kHz \leq f_nom < 31.2 kHz	31.2 kHz \leq f_nom < 40 kHz	40 kHz \leq f_nom < 90 kHz	90 kHz \leq f_nom \leq 120 kHz
Motional resistance	55 k Ω Max.	35 k Ω Max.	20 k Ω Max.	12 k Ω Max.

Motional resistance C-4 TYPE

Frequency	32 kHz \leq f_nom < 38 kHz	38 kHz \leq f_nom < 60 kHz	60 kHz \leq f_nom < 74 kHz	74 kHz \leq f_nom \leq 100 kHz	100 kHz < f_nom \leq 120 kHz
Motional resistance	55 k Ω Max.	30 k Ω Max.	25 k Ω Max.	22 k Ω Max.	15 k Ω Max.

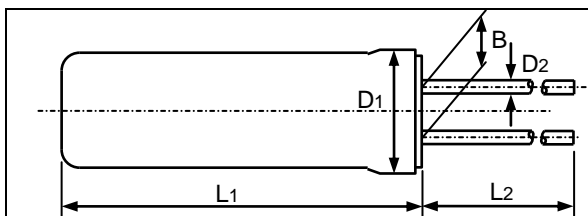
Product name C-002RX 32.768000kHz 12.5 +20.0-20.0

(Standard form)

- ① Model ② Frequency ③ Load capacitance(pF) ④ Frequency tolerance($\times 10^{-6}$, +25 °C)

External dimensions

(Unit:mm)



Model	L ₁	L ₂	D ₁	D ₂	B
C-002RX C-2 TYPE	6.0 Max.	4.0 Min.	ϕ 2.0 Max.	ϕ 0.2	0.7
C-004R C-4 TYPE	5.0 Max.	4.0 Min.	ϕ 1.5 Max.	ϕ 0.18	0.5
C-005R	4.6 Max.	4.0 Min.	ϕ 1.2 Max.	ϕ 0.15	0.3

Mouser Electronics

Authorized Distributor

Click to View Pricing, Inventory, Delivery & Lifecycle Information:

Epson:

[C-2 32.0000KB-P:PBFREE](#) [C-2 39.0000K-A:PBFREE](#) [C-2 41.0000K-A:PBFREE](#) [C-2 36.0000K-P](#) [C-2 75.0000K-P](#)
[C-2 131.0720K-P:PBFREE](#) [C-2 96.0000K-P:PBFREE](#) [C-2 60.0000K-P:PBFREE](#) [C-2 38.0000KA-P:PBFREE](#) [C-2](#)
[25.6000K-P:PBFREE](#) [C-2 31.2500K-P:PBFREE](#) [C-2 38.4000K-P:PBFREE](#) [C-2 100.0000K-P:PBFREE](#) [C-2 40.0000K-](#)
[P:PBFREE](#) [C-2 20.0000K-P:PBFREE](#) [C-2 32.0000K-P:PBFREE](#) [C-2 149.4750K-P:PBFREE](#) [C-2 76.8000K-P:PBFREE](#)
[C-2 30.0000K-P:PBFREE](#) [C-2 65.5350K-P:PBFREE](#) [C-2 120.0000K-P:PBFREE](#)