

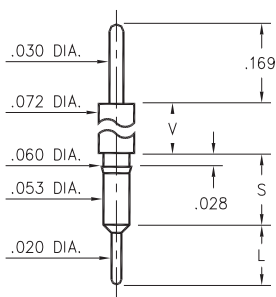
MALE PCB PINS

PRINTED CIRCUIT PINS

3400 ⇨ 3402/3405/3410

34XX-0-00-XX-00-00-03-0

Press-fit in .057 mounting hole

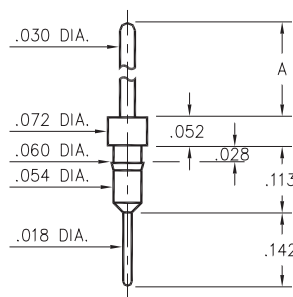


Basic Part Number	Shoulder Height V	Length S	Length L
3402-0	.052	.138	.121
3401-0	.100	.136	.125
3405-0	.169	.146	.115
3400-0	.461	.145	.115
3410-0	.934	.136	.124

3411

3411-X-00-XX-00-00-03-0

Press-fit in .057 mounting hole

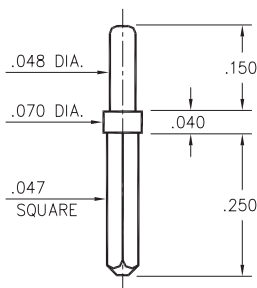


Basic Part Number	Pin Length A
3411-0	.417
3411-1	.217

0600

0600-0-05-XX-00-00-01-0

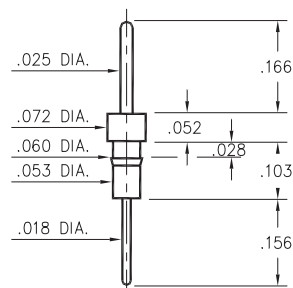
Solder mount .052 mounting hole



0290

0290-0-00-XX-00-00-03-0

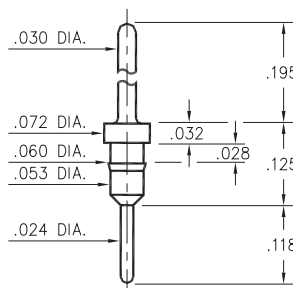
Press-fit in .057 mounting hole



7007

7007-0-00-XX-00-00-03-0

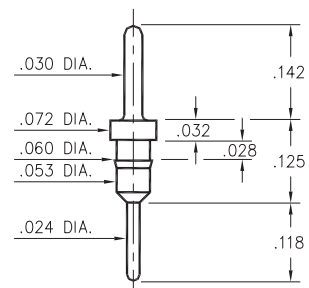
Press-fit in .057 mounting hole



5016

5016-0-00-XX-00-00-03-0

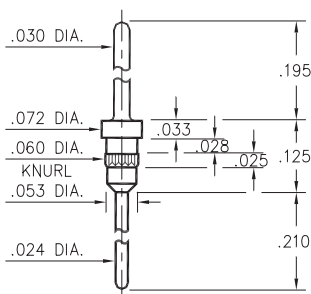
Press-fit in .057 mounting hole



5005

5005-0-00-XX-00-00-03-0

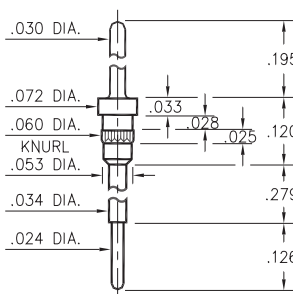
Press-fit in .057 mounting hole



5107

5107-0-00-XX-00-00-03-0

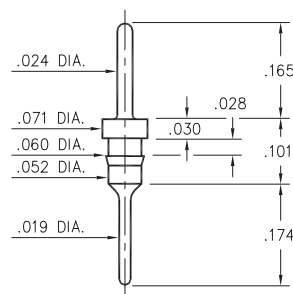
Press-fit in .057 mounting hole



8919

8919-0-00-XX-00-00-03-0

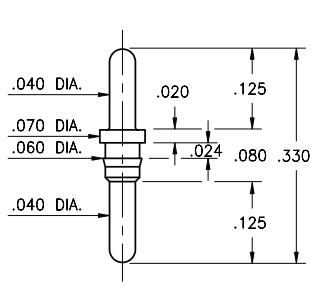
Press-fit in .057 mounting hole



3077

3077-0-00-XX-00-00-03-0

Press-fit in .057 mounting hole



SPECIFICATIONS:

Pin Material: Brass Alloy 360, 1/2 Hard
(Except where noted)

Dimensions: Inches

Tolerances On: Lengths: ±.005
Diameters: ±.002
Angles: ± 2°



ORDER CODE: XXXX - X - 0X - XX - 00 - 00 - XX - 0

BASIC PART #

SPECIFY PIN FINISH:

- 01 200 μ" TIN/LEAD OVER NICKEL
- ◆ 80 200 μ" TIN OVER NICKEL (RoHS)
- ◆ 15 10 μ" GOLD OVER NICKEL (RoHS)
- ◆ 21 20 μ" GOLD OVER NICKEL (RoHS)
- ◆ 34 50 μ" GOLD OVER NICKEL (RoHS)



Mouser Electronics

Authorized Distributor

Click to View Pricing, Inventory, Delivery & Lifecycle Information:

Mill-Max:

[3411-1-00-01-00-00-03-0](#) [3410-0-00-01-00-00-03-0](#) [0600-0-05-01-00-00-01-0](#) [0290-0-00-01-00-00-03-0](#) [0290-0-00-15-00-00-03-0](#) [0290-0-00-21-00-00-03-0](#) [0290-0-00-34-00-00-03-0](#) [0600-0-05-21-00-00-01-0](#) [3400-0-00-21-00-00-03-0](#) [3405-0-00-15-00-00-03-0](#) [5005-0-00-21-00-00-03-0](#) [5107-0-00-21-00-00-03-0](#) [7007-0-00-21-00-00-03-0](#) [5016-0-00-00-00-00-03-0](#) [3411-1-00-00-00-00-03-0](#) [5005-0-00-00-00-00-03-0](#) [3405-0-00-00-00-00-03-0](#) [3410-0-00-00-00-00-03-0](#) [5107-0-00-00-00-00-03-0](#) [7007-0-00-00-00-00-03-0](#) [7007-0-00-00-00-00-03-4](#) [3400-0-00-00-00-00-03-0](#) [0600-0-05-00-00-00-01-0](#) [8919-0-00-00-00-00-03-0](#) [3411-0-00-00-00-00-03-0](#) [3402-0-00-00-00-00-03-0](#) [3401-0-00-00-00-00-03-0](#)