

# Timers

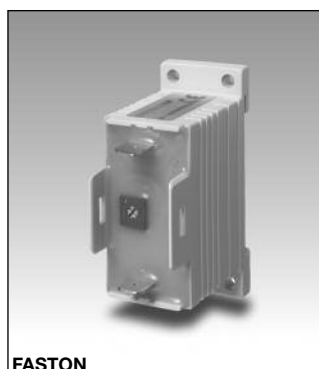
## Symmetrical Recycler

### Type ECS

CARLO GAVAZZI



SCREW



FASTON

- Fail-safe two-wire connection
- Low-cost
- Multi-voltage: 24-230 VAC
- 2 types: Recycler (Start OFF)  
Recycler (Start ON)
- Time range: 0.5 s - 10 m
- Knob-adjustable time setting
- Output: SCR 10-500 mA (screws) and SCR 10-700mA (Fast-ON)
- For mounting on DIN-rail in accordance with DIN/EN 50 022
- 22.5 mm small Euronorm housing

## Product Description

Small, low cost monofunction timer with adjustable time setting. 2-wire connection for easy and fail-safe use (see diagram). For mounting on DIN-rail or directly on sur-

face by screw. The timer is used e.g. with industrial relays or 3-phase contactors.

## Ordering Key

**ECS S M23 A 10S F**

Housing \_\_\_\_\_  
 Function \_\_\_\_\_  
 Small E-line \_\_\_\_\_  
 Output \_\_\_\_\_  
 Power supply \_\_\_\_\_  
 Type \_\_\_\_\_  
 Time range \_\_\_\_\_  
 Fast-ON connection \_\_\_\_\_

## Type Selection

Mounting	Output	Time range	Connection	Supply: 24 - 230 VAC
For DIN-rail or for screw	SCR	0.5 - 10 s	Screws	ECS S M23 A 10S (OFF) ECS S M23 B 10S (ON)
	SCR	0.1 - 1 m	Screws	ECS S M23 A 1M (OFF) ECS S M23 B 1M (ON)
	SCR	1 - 10 m	Screws	ECS S M23 A 10M (OFF) ECS S M23 B 10M (ON)
For DIN-rail or for screw	SCR	0.5 - 10 s	Fast-ON	ECS S M23 A 10S F (OFF) ECS S M23 B 10S F (ON)
	SCR	0.1 - 1 m	Fast-ON	ECS S M23 A 1M F (OFF) ECS S M23 B 1M F (ON)
	SCR	1 - 10 m	Fast-ON	ECS S M23 A 10M F (OFF) ECS S M23 B 10M F (ON)

## Time Specifications

<b>Time ranges</b>	
10 S	0.5 - 10 s
1 M	0.1 - 1 m
10 M	1 - 10 m
<b>Time range accuracy</b>	Max. setting: actual time ≥ max. set time min. setting: actual time ≤ min. set time
<b>Repeat accuracy</b>	≤ 0.2%
<b>Time variation</b>	
Within rated power supply and ambient temperature	≤ 0.1%/V ≤ 0.2%/°C
<b>Ratio <math>T_{OFF}/T_{ON}</math></b>	$1 \leq \frac{T_{OFF}}{T_{ON}} \leq 1.1$
<b>Reset</b>	
Time and output	Power supply interruption ≥ 200 ms

## Output Specifications

<b>Output</b>	SCR
<b>Output current</b>	
Maximum load current (screw terminals) (Fast-ON connection)	500 mA 700 m
Maximum current for 100 ms (screw terminals) (Fast-ON connection)	5.5 A 7 A
Minimum load current	10 m
<b>Leakage current</b>	≤ 3.5 mA @ 230 V typ.: 2 m
<b>Voltage drop</b>	≤ 8 VAC typ.: 5 VAC @ 50 mA

## Supply Specifications

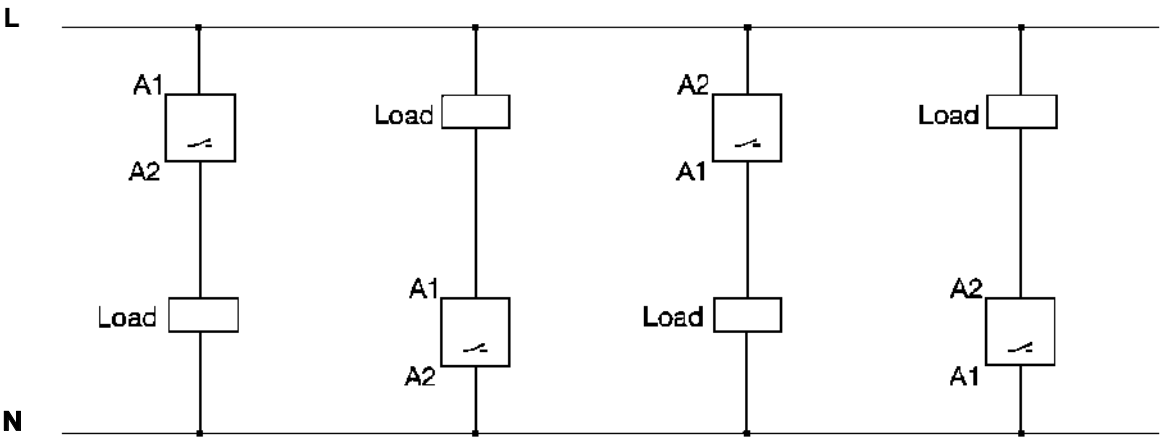
<b>Power supply</b>	Overvoltage cat. III (IEC 60664)
Rated operational voltage	(IEC 60038) 24-230 VAC, -10/+15%
Rated insulation voltage	None



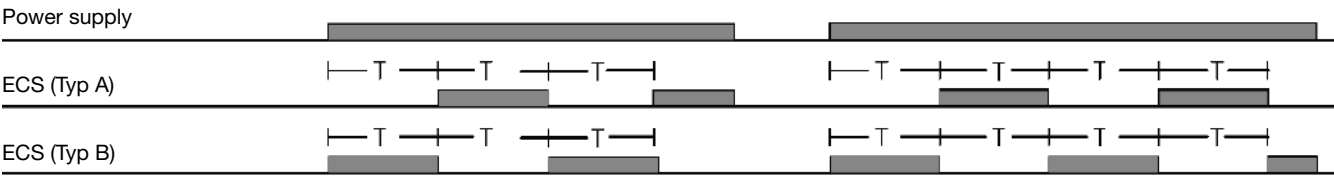
General Specifications

Power ON delay	≤ 100 ms	Approvals	UL, CSA
Power OFF delay	≥ 200 ms	CE Marking	Yes
Environment		EMC	Electromagnetic Compatibility
Degree of protection	IP 20	Immunity	Acc. to IEC 60801-4
Pollution degree	3		Acc. to IEC 60801-5
Operating temperature	-20° to +50°C (-4° to +122°F)		
Storage temperature	-30° to +80°C (-22° to +176°F)		
Weight	50 g		
Housing			
Dimensions Screw terminals	22.5 x 56 x 49 mm		
Fast-ON terminals	22.5 x 56 x 44 mm		
Material	ABS		

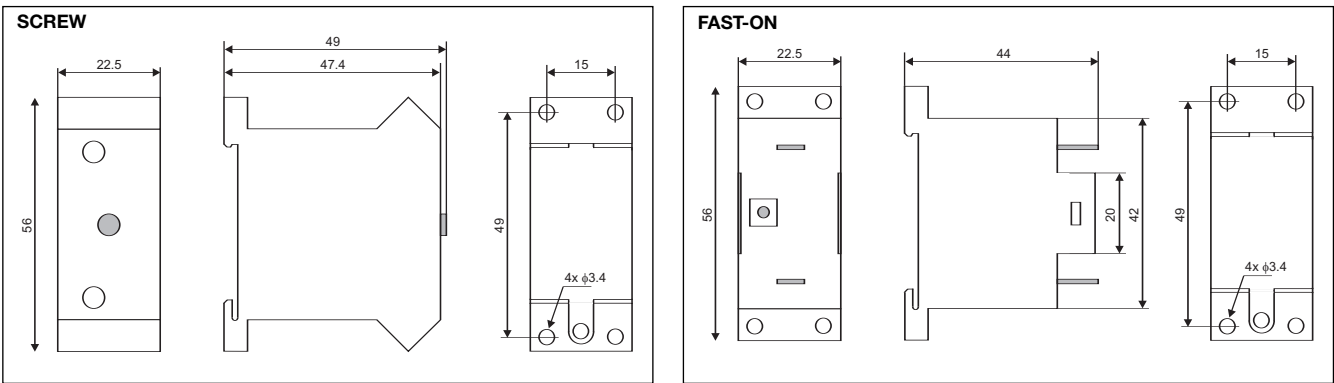
Wiring Diagram



Operation Diagram



Dimensions



# Mouser Electronics

Authorized Distributor

Click to View Pricing, Inventory, Delivery & Lifecycle Information:

[Carlo Gavazzi:](#)

[ECSSM23B1M](#) [ECT--WELL](#) [ECSSM23A10S](#) [ECSSM23B10M](#) [ECSSM23A1M](#) [ECSSM23A1MF](#) [ECSSM23B10SF](#)  
[ECSSM23B10MF](#) [ECSSM23B10S](#) [ECSSM23A10SF](#) [ECSSM23B1MF](#)