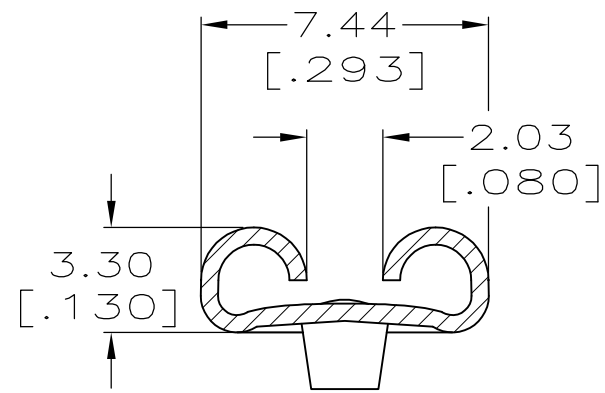
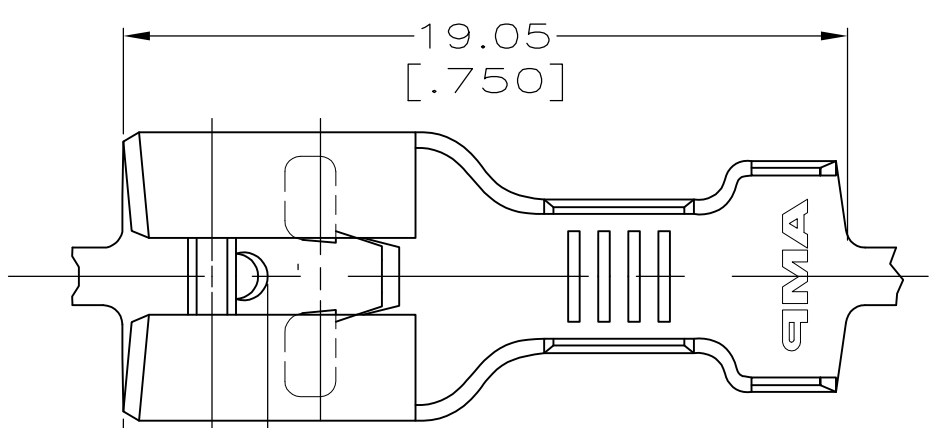


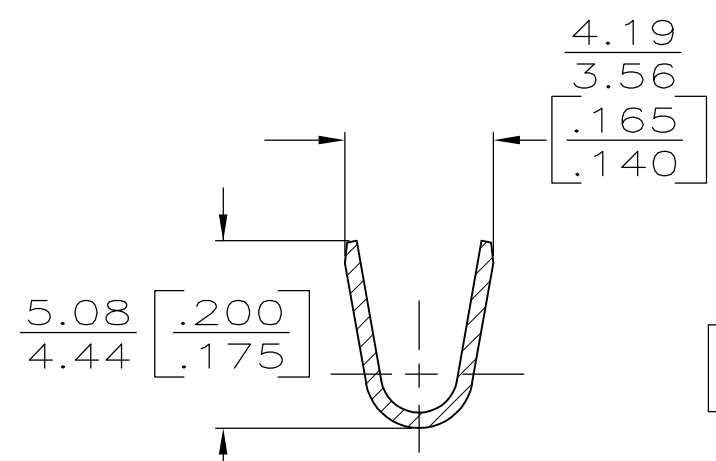
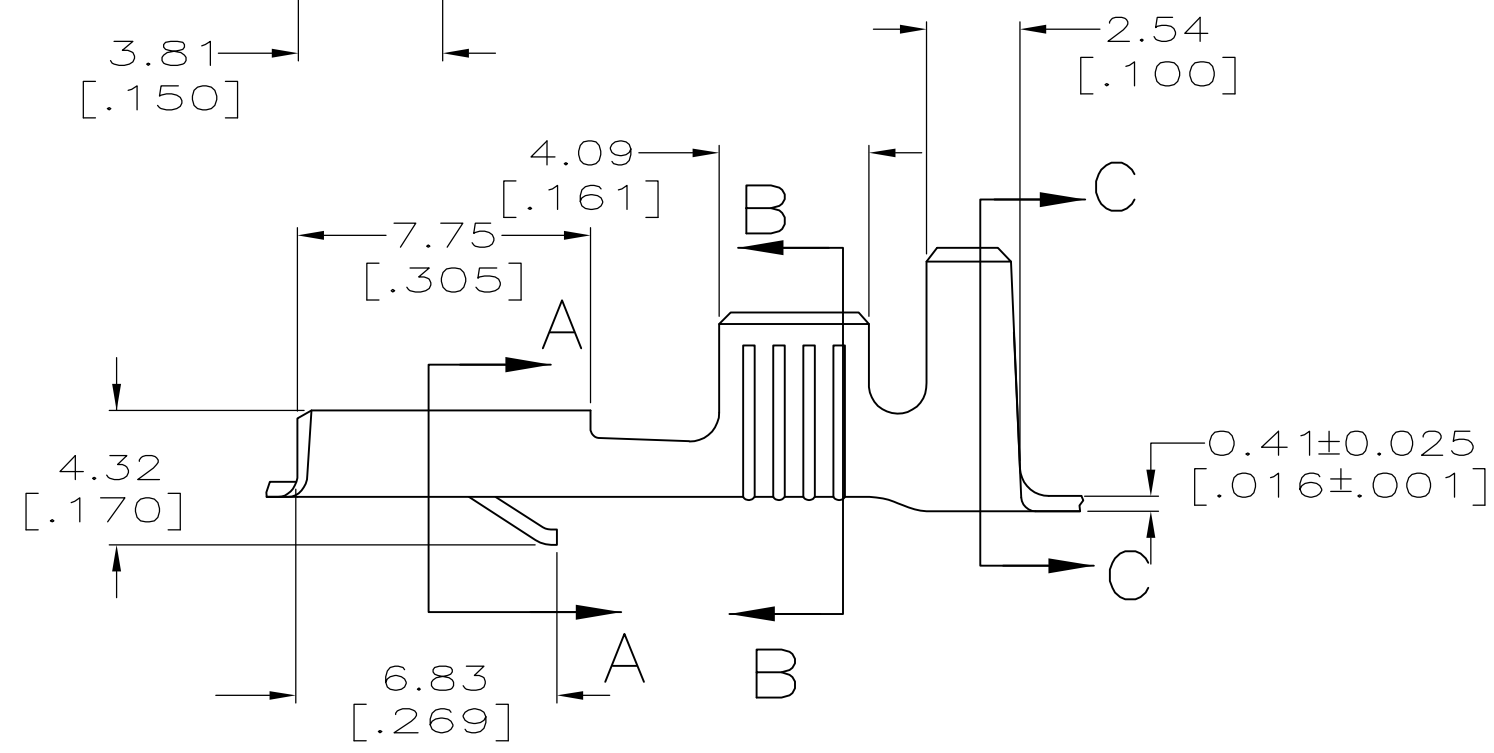
THIS DRAWING IS UNPUBLISHED. RELEASED FOR PUBLICATION  
 © COPYRIGHT - By - ALL RIGHTS RESERVED.

|     |      |           |     |               |          |     |      |
|-----|------|-----------|-----|---------------|----------|-----|------|
| LOC | DIST | REVISIONS |     |               |          |     |      |
| AF  | 50   | P         | LTR | DESCRIPTION   | DATE     | DWN | APVD |
|     |      | G1        |     | ECR-17-008070 | 05/06/17 | GG  | TD   |

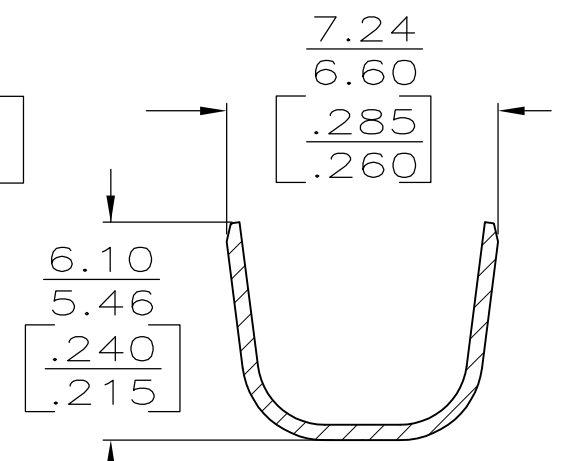
- 1 CONTINUOUS STRIP ON REELS.
- 2 ACCEPTS WIRE SIZE [#16-#12 OR TWO #16'S].
- 3 INSULATION RANGE TO BE 4.06-5.33 [.160-.210] OR TWO 3.30 [.130] MAX DIA.
- 4 MATING TAB THK IS 0.81±0.025 [.032±.001].
- △5 INTERLEAVING PAPER REQUIRED.
- △6 PRELIMINARY - NOT FOR PRODUCTION



SECTION A-A



SECTION B-B



SECTION C-C

|    |                               |    |         |
|----|-------------------------------|----|---------|
| △5 | 0.002032 [.000080] MIN TIN    | △6 | 60249-5 |
|    | 0.000381 [.000015] THK SILVER |    | 60249-3 |
|    | TIN                           |    | 60249-2 |
|    | -                             |    | 60249-1 |
|    | FINISH                        |    | PART NO |

| APPLICATOR DATA |                |      |
|-----------------|----------------|------|
| CRIMP           | SIZE           | TYPE |
| WIRE            | 3.05 mm [.120] | F    |
| INSUL           | 6.35 mm [.250] | F    |

| WIRE SIZE | CRIMP HEIGHT mm [INCH] |
|-----------|------------------------|
| 12 AWG    | 2.18±0.05 [.086±.002]  |
| 2x16 AWG  | 2.03±0.05 [.080±.002]  |
| 14 AWG    | 1.85±0.05 [.073±.002]  |
| 16 AWG    | 1.65±0.05 [.065±.002]  |

THIS DRAWING IS A CONTROLLED DOCUMENT.

|                    |  |
|--------------------|--|
| DIMENSIONS: INCHES | TOLERANCES UNLESS OTHERWISE SPECIFIED: |
|                    | 0 PLC ± -                              |
|                    | 1 PLC ± -                              |
|                    | 2 PLC ± 0.38 [.015]                    |
|                    | 3 PLC ± -                              |
|                    | 4 PLC ± -                              |
|                    | ANGLES ± -                             |
| MATERIAL: BRASS    | FINISH: SEE TABLE                      |

|                  |             |         |
|------------------|-------------|---------|
| DWN              | JR RUTH     | 7/14/95 |
| CHK              | MS FEHER    | 7/14/95 |
| APVD             | J GILLESPIE | 7/14/95 |
| PRODUCT SPEC     |             |         |
| APPLICATION SPEC | 114-2025    |         |
| WEIGHT           | -           |         |
| CUSTOMER DRAWING |             |         |

**STE** TE Connectivity

RECEPTACLE, FASTIN-FASTON, 6.35 [.250] SERIES

|      |           |            |               |
|------|-----------|------------|---------------|
| SIZE | CAGE CODE | DRAWING NO | RESTRICTED TO |
| A3   | 00779     | C-60249    | -             |

SCALE 5:1 SHEET 1 OF 1 REV G1