

THIS DRAWING IS UNPUBLISHED.

RELEASED FOR PUBLICATION

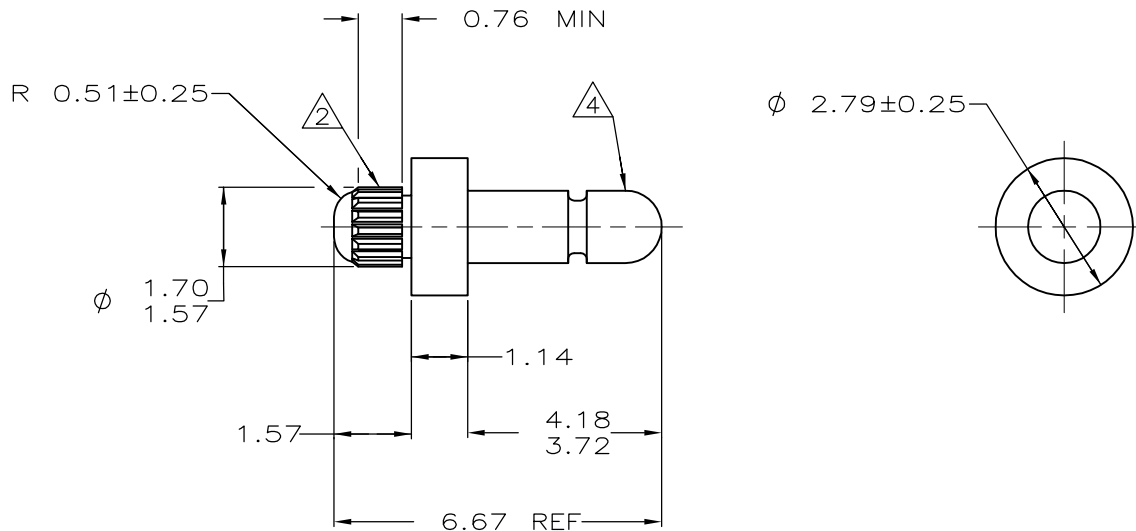
ALL RIGHTS RESERVED.

© COPYRIGHT - TE Connectivity

REVISIONS

P	LTR	DESCRIPTION	DATE	DWN	APVD
	H1	REVISED PER ECR-17-013215	18SEP17	J.Z	D.Z

- ① 0.00381 MIN BRIGHT TIN LEAD PLATING ALL OVER.
- ② REED STRAIGHT TOOTH KNURL CS 80-80 T.P.I., 125 TEETH, 70° INCLUDED ANGLE. FITS 1.50 - 1.57 DIAMETER HOLE IN A 0.79 PRINTED CIRCUIT BOARD.
- 3. PARTS TO COMPLY WITH AMP SOLDERABILITY SPECIFICATION 109-11-3.
- ④ MATES WITH AMP PARTS 60354, 60598 OR 60804.
- ⑤ 0.00381 MIN BRIGHT TIN PLATING ALL OVER.



-	-
6.67	.263
4.18	.165
3.72	.146
2.79	.110
1.70	.067
1.57	.062
1.50	.059
1.47	.058
1.14	.045
0.79	.031
0.76	.030
0.51	.020
0.25	.010
0.13	.005
0.00381	.000150
MM	IN
CONVERSION TABLE	

METRIC

⑤	3-60839-1
⑤	60839-1
FINISH	PART NUMBER

THIS DRAWING IS A CONTROLLED DOCUMENT.		DWN I. BECK 8-15-97	<b>TE</b> TE Connectivity		
DIMENSIONS: mm		CHK R. SWING 8-15-97			
TOLERANCES UNLESS OTHERWISE SPECIFIED:		APVD A. REDDICK 9-10-97	NAME PIN, .058 DIAMETER, BRASS, KNURLED, P.C. CONTACT		
0 PLC ± -		PRODUCT SPEC 108-1025	-		
1 PLC ± -		APPLICATION SPEC 114-1008	SIZE A3	CAGE CODE 00779	DRAWING NO C-60839
2 PLC ± 0.13		WEIGHT 0.000000	RESTRICTED TO -	-	
3 PLC ± -		CUSTOMER DRAWING	SCALE 10:1	SHEET 1 of 1	REV H1
4 PLC ± -					
4 PLC ANGLES ± -					
MATERIAL BRASS	FINISH SEE TABLE				