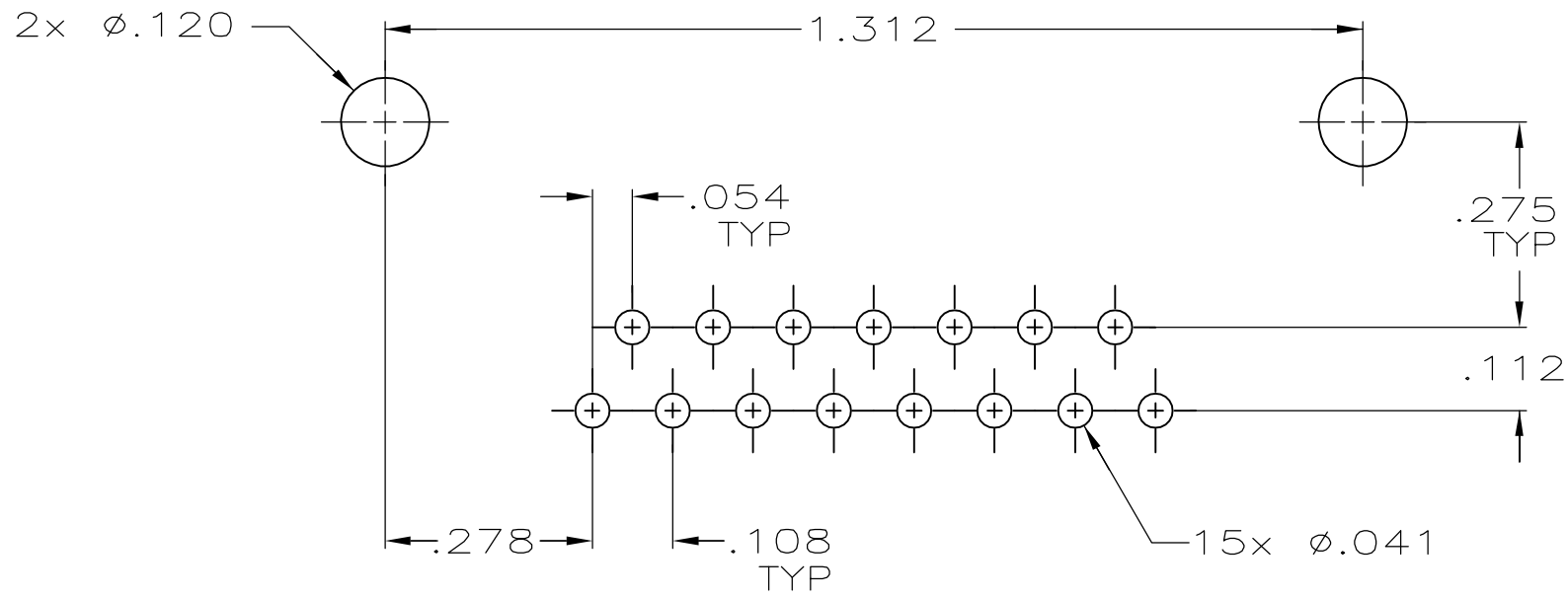
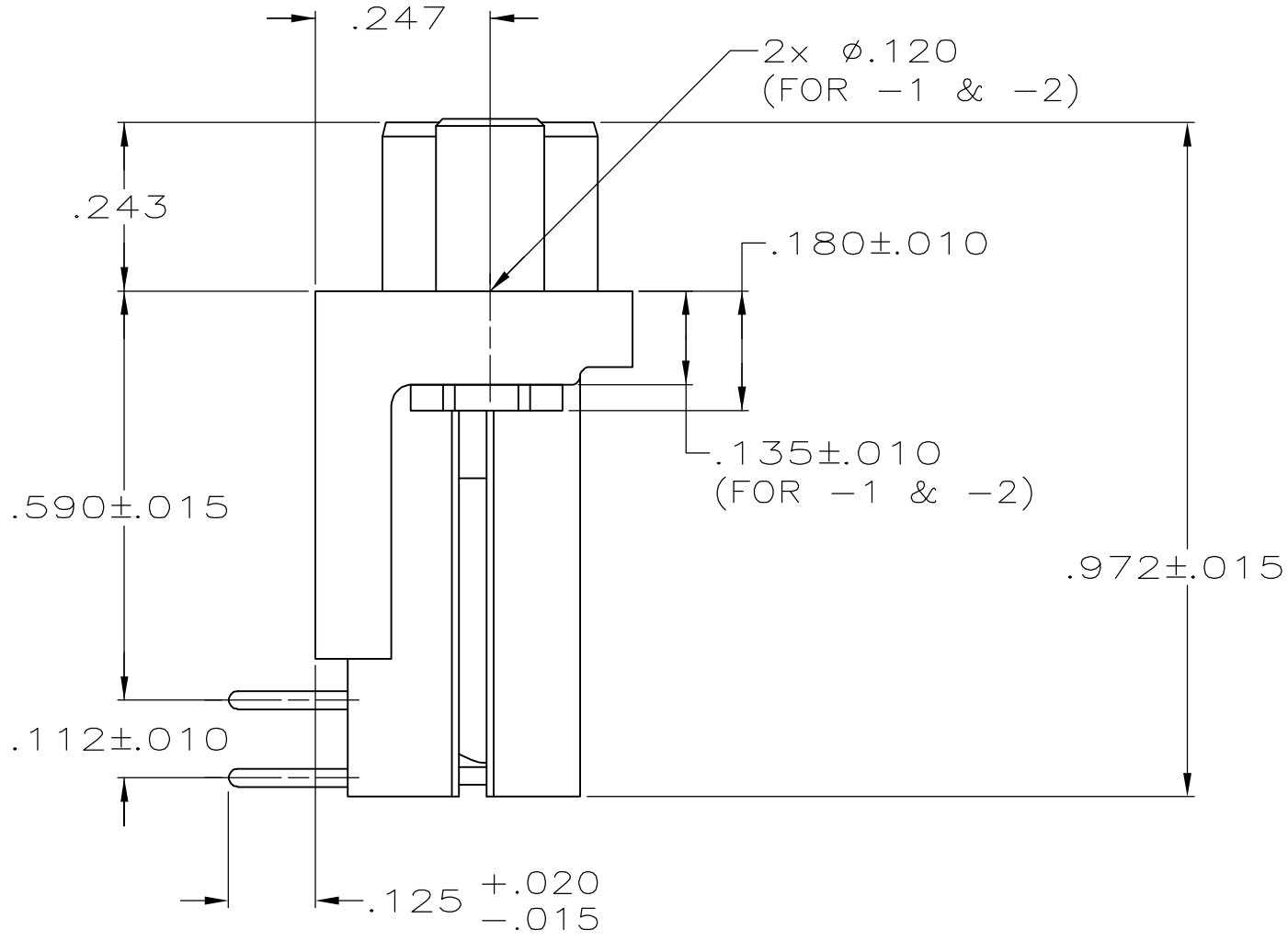
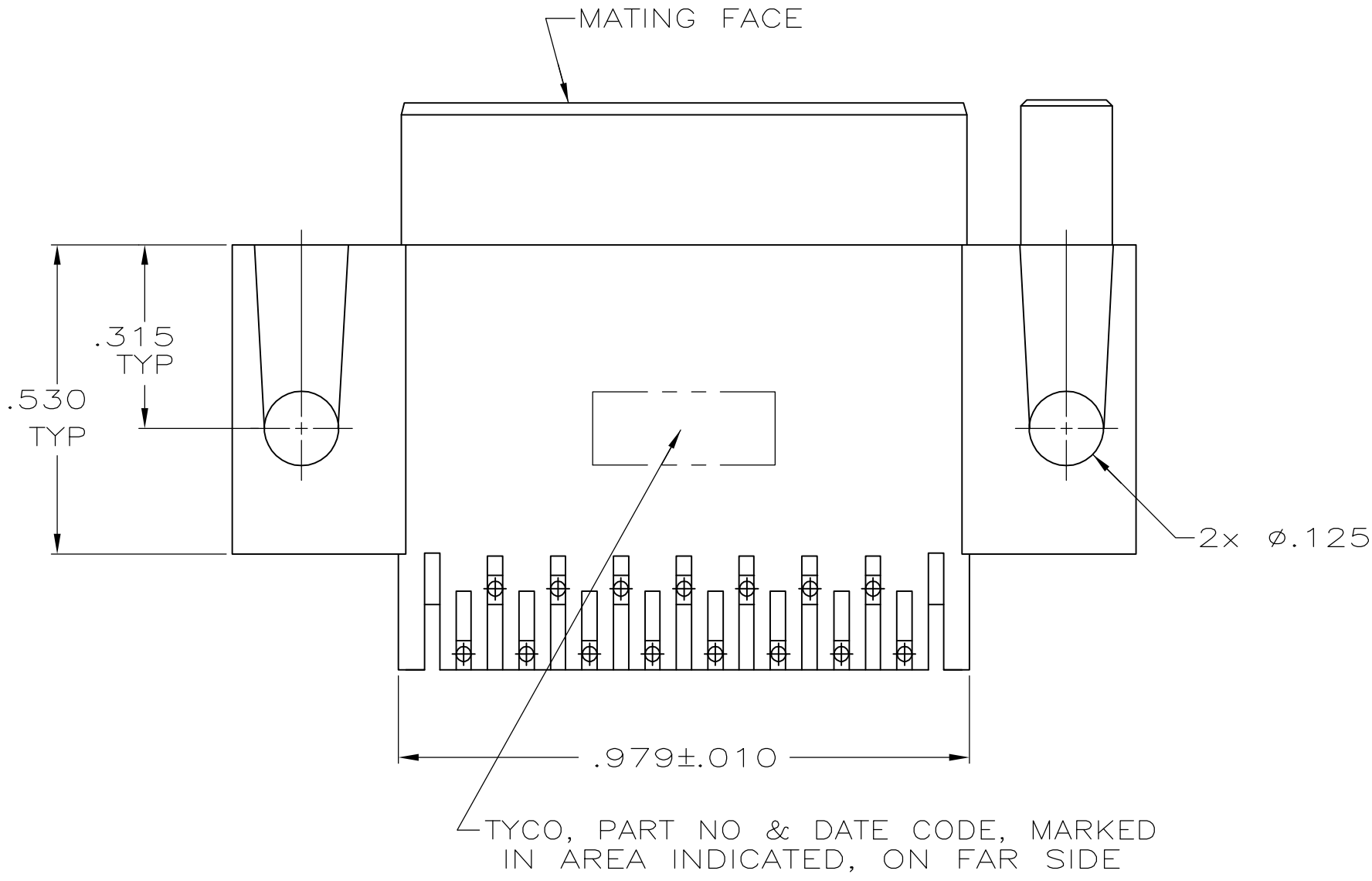
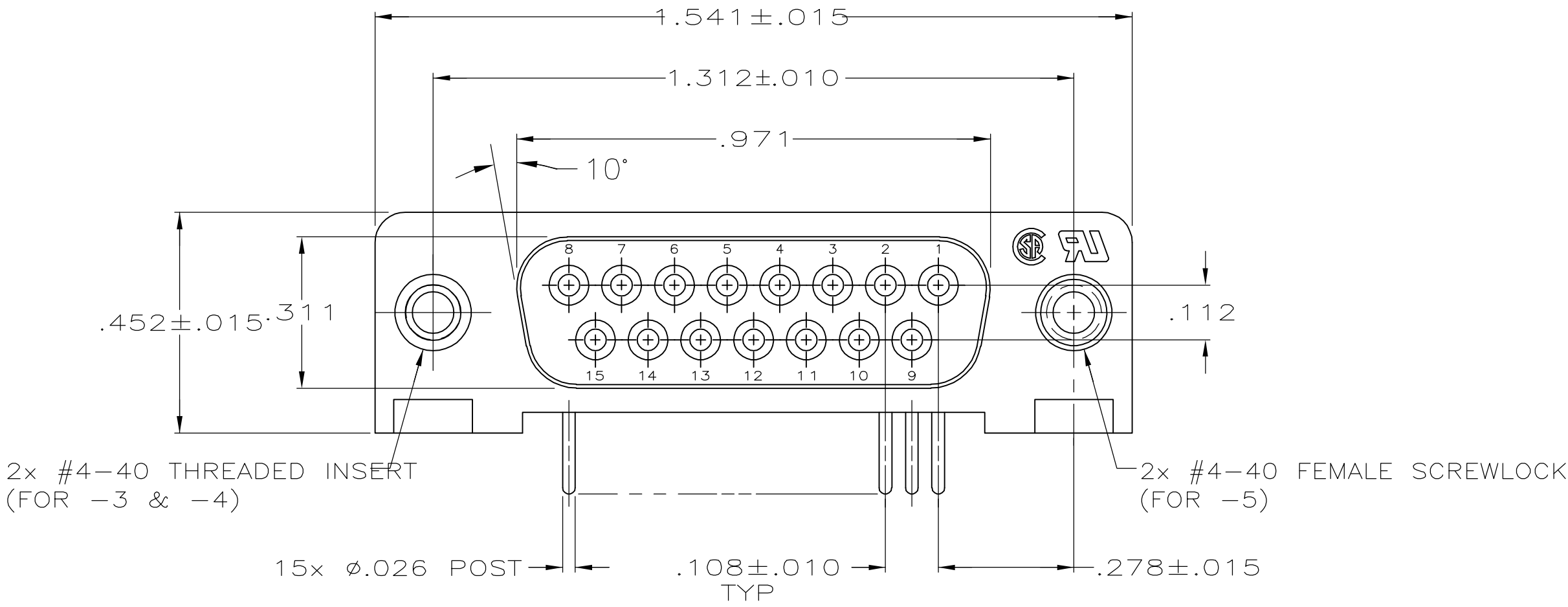


LOC		DIST		REVISIONS					
GP		00		P	LTR	DESCRIPTION	DATE	DWN	APVD
					B	REVISED PER ECO-06-019057	25AUG06	JRP	SB



P.C. BOARD MOUNTING DIMENSIONS $\triangle 2$

- $\triangle 1$ HOUSING: FLAME RETARDANT, 94V-0 RATED, GLASS FILLED, NYLON OR POLYESTER, COLOR: BLACK. CONTACTS: PHOS BRONZE. INSERTS & SCREWLOCKS: ZINC.
- $\triangle 2$ REFER TO APPLICATION SPEC FOR RECOMMENDED P.C. BOARD MOUNTING DIMENSIONS FOR AUTOMATIC INSERTION.
- $\triangle 3$ CONTACTS: SEE TABLE. INSERTS & SCREWLOCKS: CLEAR CHROMATE COATING.
- $\triangle 4$ PLATED WITH GOLD FLASH FOR LENGTH OF .055 MIN FROM MATING END, .000100 MIN TIN ON SOLDER END, ALL OVER .000050 MIN NICKEL ON ENTIRE CONTACT.
- $\triangle 5$ PLATED WITH .000030 MIN GOLD FOR LENGTH OF .055 MIN FROM MATING END, .000100 MIN TIN SOLDER END, ALL OVER .000050 MIN NICKEL ON ENTIRE CONTACT.

WITH SCREWLOCKS	$\triangle 4$	5747460-5
WITH INSERTS	$\triangle 4$ $\triangle 5$	5747460-4
WITH .120 DIA HOLE	$\triangle 4$ $\triangle 5$	5747460-3
WITH .120 DIA HOLE	$\triangle 4$	5747460-2
WITH .120 DIA HOLE	$\triangle 4$	5747460-1
REMARKS	FINISH	PART NUMBER

THIS DRAWING IS A CONTROLLED DOCUMENT.		DWN G. PETERS CHK S. BOLASH APP'D M. WALMSLEY	16SEP05 16SEP05 16SEP05	Tyco Electronics Corporation Harrisburg, PA 17105-3608	
DIMENSIONS: INCHES		TOLERANCES UNLESS OTHERWISE SPECIFIED:		NAME	
0 PLC $\pm .$		1 PLC $\pm .$		2 PLC $\pm .$	
3 PLC $\pm .005$		4 PLC $\pm .$		ANGLES $\pm .2^\circ$	
MATERIAL		FINISH		RESTRICTED TO	
$\triangle 1$		$\triangle 3$		CUSTOMER DRAWING	
SCALE 4:1		SHEET 1 OF 1		REV B	

Mouser Electronics

Authorized Distributor

Click to View Pricing, Inventory, Delivery & Lifecycle Information:

[TE Connectivity:](#)

[5747460-1](#)