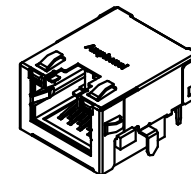
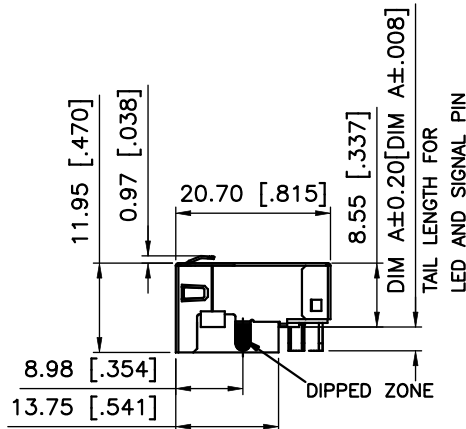


PIN NUMBERS SHOW FOR REFERENCE ONLY, IT DOES NOT SHOW ON ACTUAL PART



| REVISIONS | | | |
|-----------|------------------------------------|------------|--------|
| REV | DESCRIPTION, ECN, EAR NO. | DATE | APP'D |
| D | CHANGE SHELL SHAPE ON THE TOP FACE | JUN03,2014 | L.CHAN |
| E | UPDATE RECOMMENDED PCB LAYOUT | JUN25,2015 | L.CHAN |

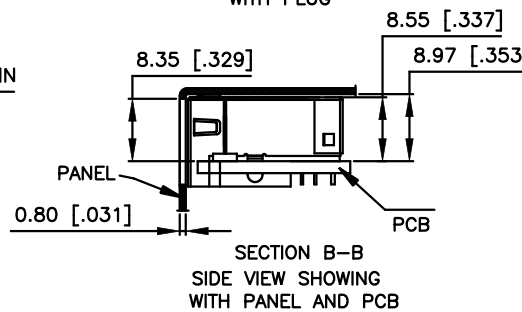
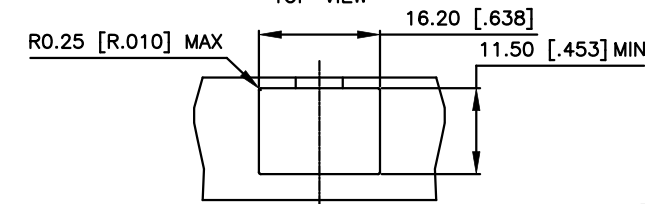
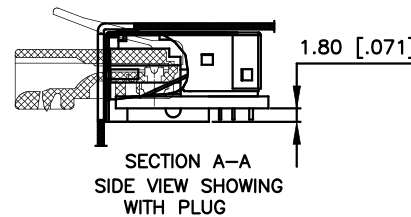
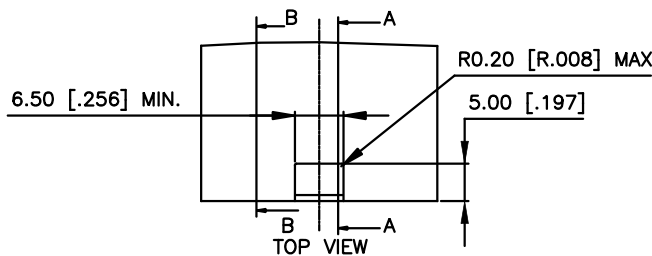
NOTES:

ELECTRICAL:

- VOLTAGE RATING : 125 VAC.
- CURRENT RATING : 1.25 AMP.
- INSULATING RESISTANCE : 500 MEGOHMS MINIMUM.
- DIELECTRIC STRENGTH : 1000 VAC 60HZ, 1MIN.
- CATEGORY 5E CHARACTERISTIC:

Frequency Near-End Crosstalk Return Loss Attenuation

| MHz | dB, MIN. | dB, MIN. | dB, MAX. |
|-------|----------|----------|----------|
| 1.0 | 65 | 30 | 0.1 |
| 4.0 | 65 | 30 | 0.1 |
| 8.0 | 64.9 | 30 | 0.1 |
| 10.0 | 63 | 30 | 0.1 |
| 16.0 | 58.9 | 30 | 0.2 |
| 20.0 | 57 | 30 | 0.2 |
| 25.0 | 55 | 30 | 0.2 |
| 31.25 | 53.1 | 30 | 0.2 |
| 62.5 | 47.1 | 24.1 | 0.3 |
| 100.0 | 43 | 20 | 0.4 |



MECHANICAL:

- SHIELD : STAINLESS STEEL, WITH TIN-DIP ON SOLDER TABS.
- HOUSING : HIGH TEMP THERMOPLASTIC. UL 94V-0.
- INSERT : HIGH TEMP THERMOPLASTIC UL 94V-0.
- PCB : FR-4.
- CONTACT : PHOSPHOR BRONZE. SELECTIVE GOLD PLATING FOR MATING SURFACE, SEE AMPHENOL PART NUMBER FOR DETAIL. 50u" NICKEL UNDERPLATE 100u" MATTE TIN PLATING ON CONTACT SOLDER TAIL.

ENVIRONMENTAL:

- STORAGE : -40° TO +85°.
 - OPERATION : -40° TO +85°.
- MATES WITH MODULAR PLUG CONFORMING TO TIA 1096.
RECOMMENDED SOLDER PROCESS: WAVE SOLDER, PEAK TEMPERATURE 260° FOR 5 SECOND MAXIMUM.

AMPHENOL PART NUMBER: RJE72-188-1XXX

- GOLD PLATING OPTION _____ (SEE BELOW TABLE 1) REFER TO LED OPTIONS DRAWING FOR ORDERING CODES
- 1=6u" [0.15 MICRONS] GOLD PLATING
 - 2=15u" [0.38 MICRONS] GOLD PLATING
 - 3=30u" [0.76 MICRONS] GOLD PLATING
 - 4=50u" [1.27 MICRONS] GOLD PLATING

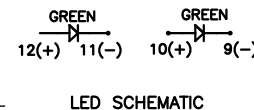
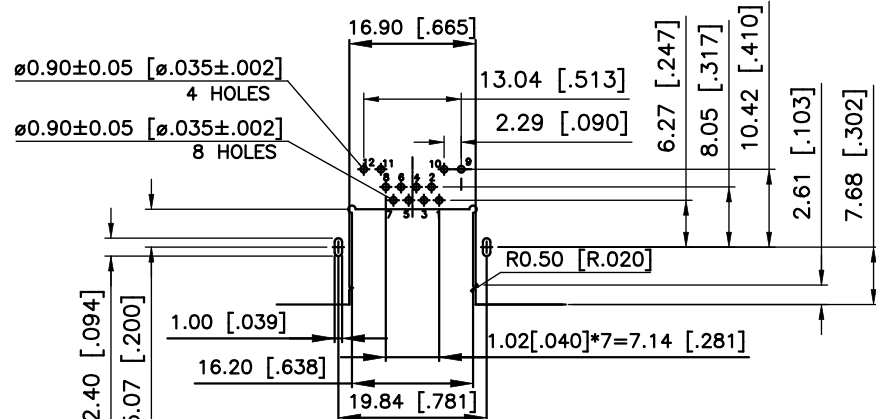


TABLE 1

| | | |
|---------------|-------------|-------------------------|
| RJE721881XX1 | 3.18 [.125] | 2.36 [.093] |
| RJE721881XX2 | 2.27 [.089] | 1.57 [.062] |
| RJE721881XX3 | 2.16 [.085] | 1.57 [.062] |
| AMPHENOL P/N: | DIM A | RECOMMEND PCB THICKNESS |

| | |
|----------------------------|--------------------------------|
| UNLESS SPECIFIED OTHERWISE | DRAWN HUGH WANG FEB 22,2012 |
| PRIMARY UNITS MILLIMETERS | CHECKED L.CHAN FEB 22,2012 |
| SECONDARY INCHES | M.E. APP'D |
| REFERENCE IN PARENTHESES | Q.A. APP'D |
| GENERAL TOLERANCES FOR MM | DWG APP'D ADRIAN.G FEB 22,2012 |
| 1 DECIMAL PLACE ±0.50 | ENG. REL. NO. |
| 2 DECIMAL PLACE ±0.30 | REF. |
| 3 DECIMAL PLACE ±0.10 | THIRD ANGLE PROJECTION |
| ANGULAR DEGREES ±3° | DO NOT SCALE DRAWING |

Amphenol Canada Corp.
www.amphenolcanada.com

MODULAR JACK, SINGLE PORT, 8 POSITIONS, 8 CONTACTS, SHIELDED WITH TOP & SIDE TABS, WITH LED, SINK PCB TYPE, TAB UP, CAT5E

| | | | |
|-------------|------------------|-----------|--------|
| DWG NO. | P-RJE72-188-1XXX | REV | E |
| CODE ID NO. | 03554 | DWG SIZE: | C |
| SCALE: | N/A | SHEET | 1 OF 1 |

Mouser Electronics

Authorized Distributor

Click to View Pricing, Inventory, Delivery & Lifecycle Information:

Amphenol:

[RJE7218814A1](#) [RJE721881451](#) [RJE721881411](#) [RJE721881441](#) [RJE7218814B1](#) [RJE721881401](#) [RJE721881452](#)
[RJE721881352](#) [RJE721881353](#) [RJE721881412](#) [RJE721881351](#) [RJE721881453](#) [RJE721881402](#) [RJE7218811D3](#)
[RJE721881161](#) [RJE7218812P3](#) [RJE721881232](#) [RJE7218814N3](#) [RJE7218812D3](#) [RJE7218813E2](#) [RJE7218814F1](#)
[RJE721881431](#) [RJE721881123](#) [RJE7218813F2](#) [RJE721881373](#) [RJE7218814V1](#) [RJE721881301](#) [RJE7218812H1](#)
[RJE7218813N1](#) [RJE7218813H3](#) [RJE721881201](#) [RJE721881192](#) [RJE7218812L2](#) [RJE7218811C3](#) [RJE721881292](#)
[RJE7218814B3](#) [RJE721881473](#) [RJE721881271](#) [RJE7218814L2](#) [RJE7218813C1](#) [RJE721881133](#) [RJE721881332](#)
[RJE7218813B1](#) [RJE7218812B2](#) [RJE7218813J3](#) [RJE7218812G1](#) [RJE721881442](#) [RJE721881221](#) [RJE7218813D1](#)
[RJE7218813K3](#) [RJE7218811B2](#) [RJE721881242](#) [RJE7218811R3](#) [RJE7218814D3](#) [RJE721881342](#) [RJE721881252](#)
[RJE721881102](#) [RJE7218811J1](#) [RJE7218812A2](#) [RJE721881311](#) [RJE721881362](#) [RJE7218812E3](#) [RJE721881483](#)
[RJE7218813P1](#) [RJE7218811V3](#) [RJE7218812N2](#) [RJE7218812C2](#) [RJE7218811E3](#) [RJE721881281](#) [RJE721881191](#)
[RJE721881211](#) [RJE7218814J1](#) [RJE7218812M2](#) [RJE721881393](#) [RJE721881372](#) [RJE7218812K1](#) [RJE7218811N2](#)
[RJE7218813L3](#) [RJE721881493](#) [RJE7218814M2](#) [RJE7218813R1](#) [RJE721881423](#) [RJE721881303](#) [RJE721881231](#)
[RJE721881203](#) [RJE7218812M1](#) [RJE721881112](#) [RJE7218813G2](#) [RJE721881291](#) [RJE7218813V2](#) [RJE721881482](#)
[RJE7218812V3](#) [RJE721881153](#) [RJE7218814R3](#) [RJE721881472](#) [RJE721881321](#) [RJE7218814E3](#) [RJE7218813V1](#)
[RJE7218812G3](#) [RJE7218811T3](#)