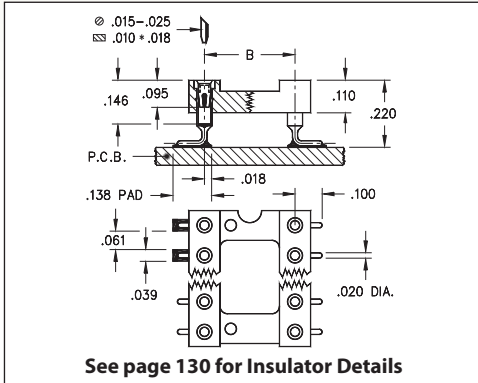
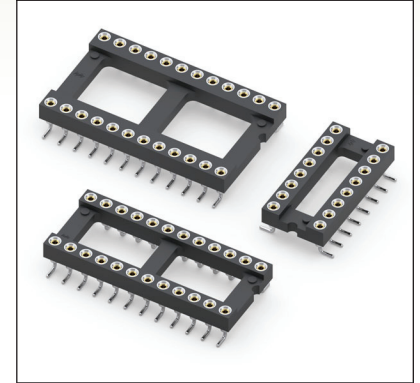


DUAL-IN-LINE SOCKETS

SERIES 110...105 • SURFACE MOUNT, GULL WING • OPEN FRAME



- Socket pins feature closed end construction eliminating any solder wicking problems
- Gull wing terminals provide maximum strength and permit easy visual inspection of solder joints. Series 110 uses Mill-Max #1005 pins. See page 166 for details
- Hi-Rel, 4-finger BeCu #30 contact is rated at 3 amps. See page 253 for details
- Insulators are high temperature thermoplastic, suitable for all soldering operations
- For Electrical, Mechanical and Environmental Data, see page 264 for details



Total number of pins				Quantity per tube	<h3>ORDERING INFORMATION</h3>															
	A	B	C																	
10	0.5	0.2	0.3	40	110-XX-210-41-105000															
4	0.2	0.3	0.4	102	110-XX-304-41-105000															
6	0.3	0.3	0.4	67	110-XX-306-41-105000															
8	0.4	0.3	0.4	50	110-XX-308-41-105000															
10	0.5	0.3	0.4	40	110-XX-310-41-105000															
14	0.7	0.3	0.4	28	110-XX-314-41-105000															
16	0.8	0.3	0.4	25	110-XX-316-41-105000															
18	0.9	0.3	0.4	22	110-XX-318-41-105000															
20	1.0	0.3	0.4	20	110-XX-320-41-105000															
22	1.1	0.3	0.4	18	110-XX-322-41-105000															
24	1.2	0.3	0.4	16	110-XX-324-41-105000															
28	1.4	0.3	0.4	14	110-XX-328-41-105000															
20	1.0	0.4	0.5	20	110-XX-420-41-105000															
22	1.1	0.4	0.5	18	110-XX-422-41-105000															
24	1.2	0.4	0.5	16	110-XX-424-41-105000															
28	1.4	0.4	0.5	14	110-XX-428-41-105000															
32	1.6	0.4	0.5	12	110-XX-432-41-105000															
24	1.2	0.6	0.7	16	110-XX-624-41-105000															
28	1.4	0.6	0.7	14	110-XX-628-41-105000															
32	1.6	0.6	0.7	12	110-XX-632-41-105000															
36	1.8	0.6	0.7	11	110-XX-636-41-105000															
40	2.0	0.6	0.7	10	110-XX-640-41-105000															
42	2.1	0.6	0.7	9	110-XX-642-41-105000															
48	2.4	0.6	0.7	8	110-XX-648-41-105000															
50	2.5	0.6	0.7	8	110-XX-650-41-105000															
52	2.6	0.6	0.7	7	110-XX-652-41-105000															
50	2.5	0.9	1.0	8	110-XX-950-41-105000															
52	2.6	0.9	1.0	7	110-XX-952-41-105000															
64	3.2	0.9	1.0	6	110-XX-964-41-105000															
See page 264 for coplanarity information					SPECIFY PLATING CODE XX=					91	93			43	47					
					Sleeve (Pin)										200 μ" Sn/Pb	200 μ" Sn/Pb			200 μ" Sn	200 μ" Sn
					Contact (Clip)										10 μ" Au	30 μ" Au			30 μ" Au	Au Flash

XX=Plating Code
See Below



Mouser Electronics

Authorized Distributor

Click to View Pricing, Inventory, Delivery & Lifecycle Information:

Mill-Max:

[110-43-964-41-105000](#) [110-43-952-41-105000](#) [110-43-950-41-105000](#) [110-43-652-41-105000](#) [110-43-650-41-105000](#) [110-43-648-41-105000](#) [110-43-642-41-105000](#) [110-43-640-41-105000](#) [110-43-636-41-105000](#) [110-43-632-41-105000](#) [110-43-628-41-105000](#) [110-43-624-41-105000](#) [110-43-432-41-105000](#) [110-43-428-41-105000](#) [110-43-424-41-105000](#) [110-43-422-41-105000](#) [110-43-420-41-105000](#) [110-43-328-41-105000](#) [110-43-324-41-105000](#) [110-43-322-41-105000](#) [110-43-320-41-105000](#) [110-43-318-41-105000](#) [110-43-314-41-105000](#) [110-43-310-41-105000](#) [110-43-308-41-105000](#) [110-43-306-41-105000](#) [110-43-304-41-105000](#) [110-43-210-41-105000](#) [110-43-316-41-105000](#) [110-93-424-41-105000](#) [110-93-328-41-105000](#) [110-93-308-41-105000](#) [110-93-628-41-105000](#) [110-93-314-41-105000](#) [110-93-316-41-105000](#) [110-93-964-41-105000](#) [110-93-952-41-105000](#) [110-93-950-41-105000](#) [110-93-652-41-105000](#) [110-93-650-41-105000](#) [110-93-648-41-105000](#) [110-93-642-41-105000](#) [110-93-640-41-105000](#) [110-93-636-41-105000](#) [110-93-632-41-105000](#) [110-93-624-41-105000](#) [110-93-432-41-105000](#) [110-93-428-41-105000](#) [110-93-422-41-105000](#) [110-93-420-41-105000](#) [110-93-324-41-105000](#) [110-93-322-41-105000](#) [110-93-320-41-105000](#) [110-93-310-41-105000](#) [110-93-306-41-105000](#) [110-93-304-41-105000](#) [110-93-210-41-105000](#) [110-93-064-01-505000](#) [110-47-314-41-105000](#)