

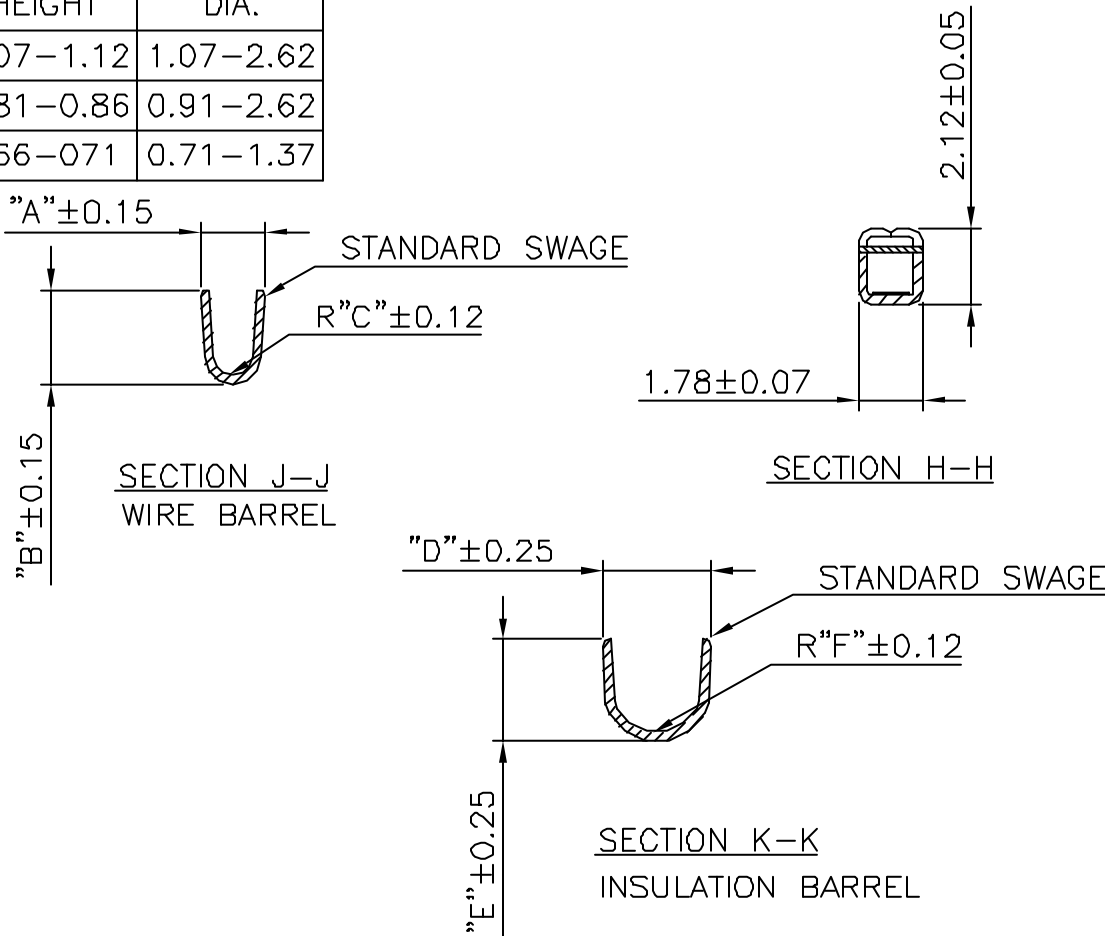
	WIRE BARREL			INSULATION BRL.			AWG	BODY	SPRING	MATERIAL
PRODUCT NO.	A	B	C	D	E	F	RANGE	PLATING	PLATING	BODY
75375-005LF	1.78	1.78	0.43	3.53	3.05	1.27	22-26	TIN	TIN	1/2 HD PHOS.BRONZE
75375-006LF	2.64	2.64	0.53	3.53	3.05	1.27	18-20	TIN	TIN	1/2 HD PHOS.BRONZE

WHEN NEEDED, SUFFIX LETTER "LF"
INDICATES THE PRODUCT IS RoHS
COMPLIANT, SEE NOTE 4

WHEN SUFFIX "LF" IS REQUIRED, 2µm MIN MATTE
TIN OVER 1.27 MIN NI IS SUPPLIED INSTEAD OF SnPb.

JUMBO PV DISCRETE CONTACT		
WIRE SIZE AWG	CRIMP HEIGHT	INSULATION DIA.
18-20	1.07-1.12	1.07-2.62
22-26	0.81-0.86	0.91-2.62
28-32	0.66-0.71	0.71-1.37

RECOMMENDED WIRE
STRIP LENGTH: 3.81±0.25



NOTES:

- PART TO MATE WITH 1.02 ROUND OR SQUARE PIN
- DIM ONLY FOR -003
- PERFORMANCE TEST ACCORDING TO BUS-12-110
- RoHS COMPATIBLE PRODUCT SPECIFICATIONS

a - PLATING:

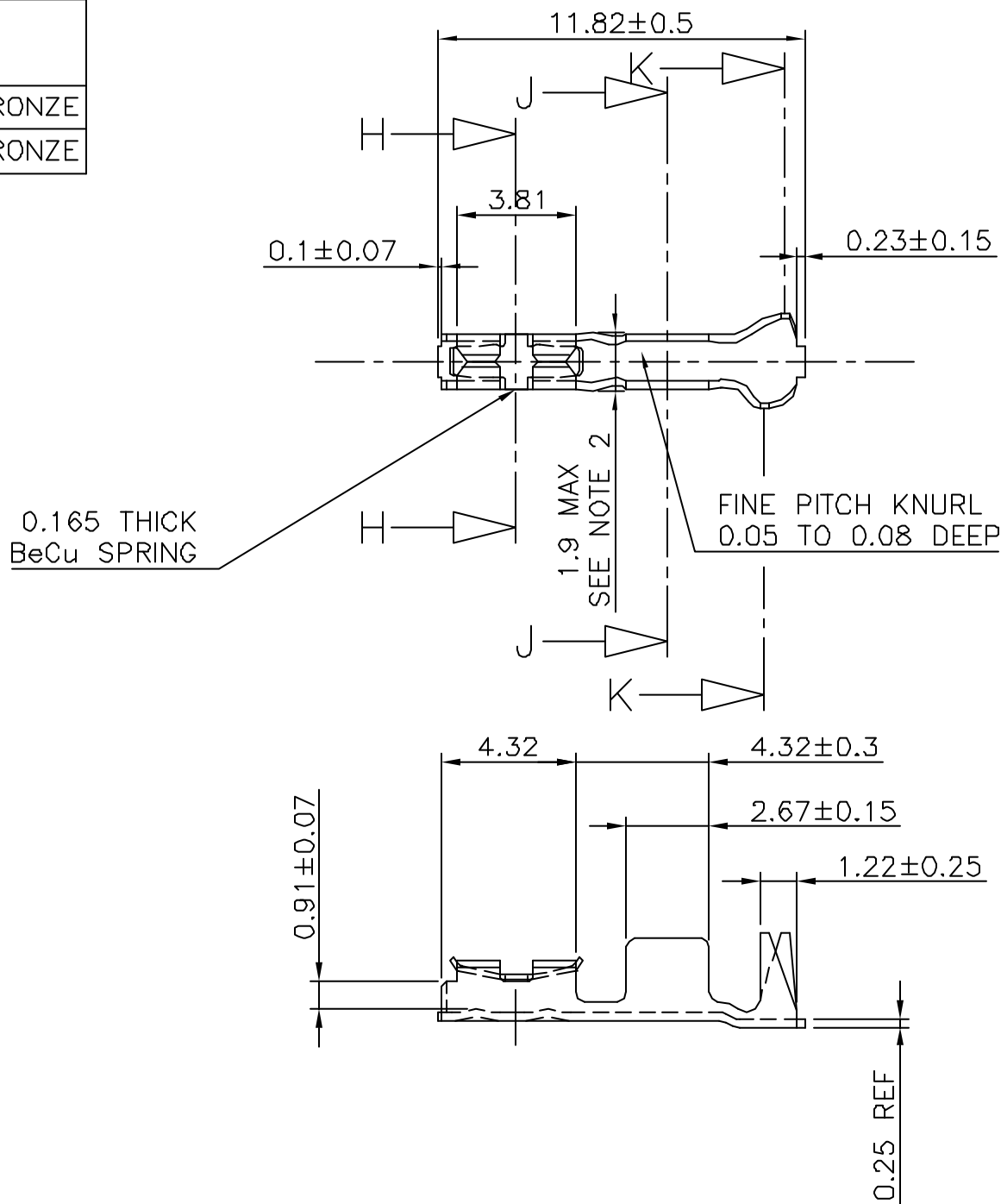
- "LF" MEANS THE PRODUCT IS LEAD-FREE,
2µm MINIMUM MATTE TIN OVER 1.27µm
MINIMUM NICKEL UNDERPLATE.

b - LABELING:

- MEETS PACKAGING SPECS AS PER GS-14-920

c - LEGAL STATEMENT: SEE GS-22-008

THE PRODUCT IS NOT INTENDED TO BE EXPOSED TO A
MANUFACTURING SOLDER PROCESS.



mat'l. code SEE DRAWING				surface ISO 1302 ✓	tolerance ISO 406 ISO 101	projection 101	product family BERGCON		
Ltr	ecn no	dr	date	tolerances unless otherwise specified		mm	title JUMBO P.V. ASSEMBLY		
K	F40421	PNZ	94.06	angles	linear	±13	scale 10:1		
L	F05-0235	DLE	05.08.25	±2'					
M	F05-0286	DLE	05.11.07				FCI		
N	F06-0217	DLE	06.07.11	dr	D LEGRAND	05.08.02			
P	F07-0120	DLE	07.01.31	engr	P NIZZI	05.08.02			
				chr	COMPAGNON	05.08.02			
				appd	P NZ	05.08.02	type CUSTOMER Drawing		
sheet index	revision sheet								