

4

3

2

1

THIS DRAWING IS UNPUBLISHED.

RELEASED FOR PUBLICATION

© COPYRIGHT

ALL RIGHTS RESERVED.

LOC

DIST


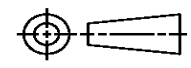
REVISIONS

P	LTR	DESCRIPTION	DATE	DWN	APVD

# REPLACED BY OCEAN STYLE APPLICATOR PART NUMBER

FOR REPLACEMENT PARTS FOR APPLICATOR REFER TO ADDITIONAL PAGE(S). SPARE PARTS KIT (IF LISTED) WILL REMAIN AVAILABLE.

THE REPLACEMENT OCEAN STYLE APPLICATOR HAS THE SAME TERMINATOR/PRESS INTERFACE AS APPLICATOR

THIS DRAWING IS A CONTROLLED DOCUMENT.		DWN	 TE Connectivity		
DIMENSIONS:		CHK			
TOLERANCES UNLESS OTHERWISE SPECIFIED:		APVD	NAME		
 0 PLC ± 1 PLC ± 2 PLC ± 3 PLC ± 4 PLC ± ANGLES ±		PRODUCT SPEC	RESTRICTED TO		
		APPLICATION SPEC	SIZE	CAGE CODE	DRAWING NO
MATERIAL	FINISH	WEIGHT	A3	C-	
		SCALE	SHEET	OF	REV

PART NUMBER	REV	FIRST USED	TERMINATOR	FEED TYPE	DESCRIPTION
1530007-1	C	-	LEADMAKER	MECH POST FEED	CUTS CARRIER
1530007-2	C	-	BENCH	MECH PRE FEED	CUTS CARRIER
1530007-6	C	-	LEADMAKER	MECH POST FEED	CONTINUOUS CARRIER
7-1530007-1	C	-	LEADMAKER	MECH POST FEED	-1 AND SPARE PARTS
7-1530007-2	C	-	BENCH	MECH PRE FEED	-2 AND SPARE PARTS
7-1530007-6	C	-	LEADMAKER	MECH POST FEED	-6 AND SPARE PARTS
7-1530007-7	A	-	-	-	SPARE PARTS KIT

**CRIMP DATA AMP TERMINAL AMP CRIMP SPECS**

TERMINAL NAME: SOCKET

CRIMP	SIZE	TYPE	RANGE
WIRE	1.78 [.070 IN]	F	22-18 AWG
INSUL	2.79 [.110 IN]	F	1.50-2.39 [.059-.094 IN]
WIRE STRIP LENGTH	APPL INSTRUCTION		
5.08-5.33 [.200-.210 IN]	408-8322 & 408-8490		
TERMINAL APPL SPEC	114-1111		FEED 11.00 [.433 IN]

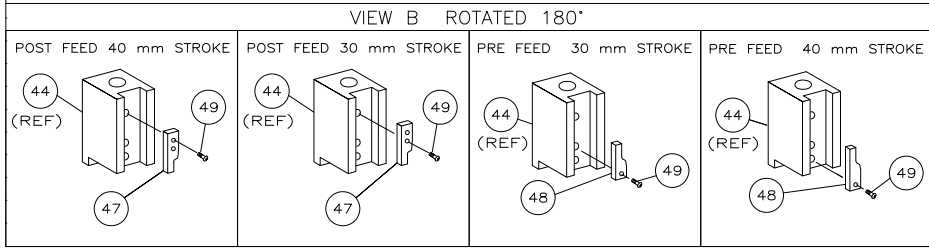
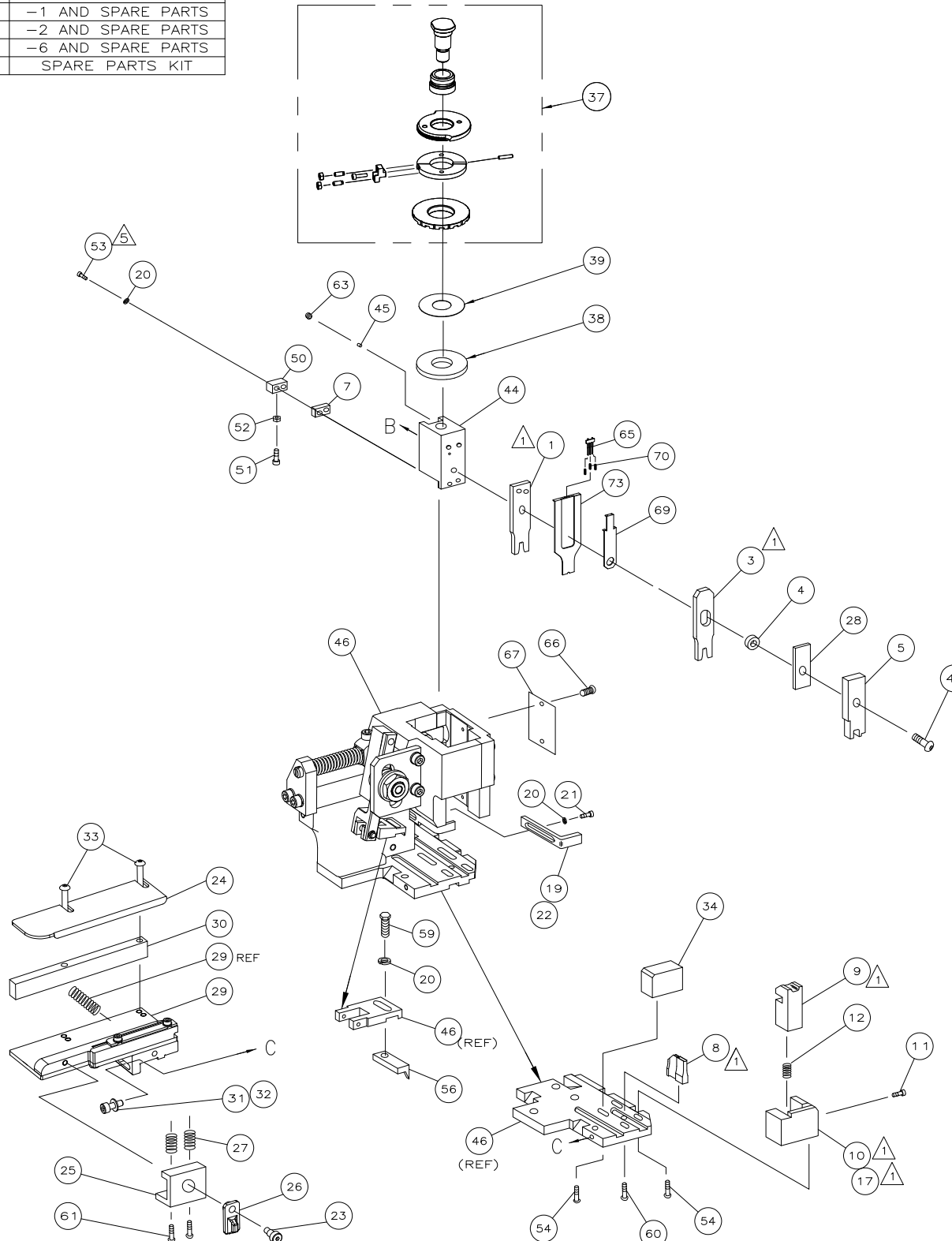
**TERMINALS APPLIED**

794221	SOCKET	-	-	-
794220	PIN	-	-	-
-	-	-	-	-
-	-	-	-	-
-	-	-	-	-
-	-	-	-	-
-	-	-	-	-
-	-	-	-	-
-	-	-	-	-

WIRE SIZE mm <sup>2</sup> AWG	CRIMP HEIGHT *	REF SETTING
18 or .75mm <sup>2</sup>	1.14 ±0.05 [.045 ±0.002 IN]	A9
20,(2)22 or .50mm <sup>2</sup>	0.99 ±0.05 [.039 ±0.002 IN]	B9
22 or .35mm <sup>2</sup>	0.91 ±0.05 [.036 ±0.002 IN]	C5

SET UP GAGE 458637-3	LAYOUT L1111
----------------------	--------------

- 1. RECOMMENDED SPARE PARTS.
- 2. GREASE RAM, CAM, CAM FOLLOWER AND FEED ROD LIGHTLY.
- 3. LUBRICATE DAILY PER THE APPLICATOR INSTRUCTION SHEET SUPPLIED WITH THE APPLICATOR.
- 4. INSULATION RANGE 1.49-2.39 [.059-.094 IN] OR (2) X 1.70 [.067 IN] MAX.
- 5. CUT TO LENGTH AT ASSEMBLY.



**\* WARNING:**  
 ON INSTALLATION, SET WIRE DISC TO LARGEST WIRE SIZE SETTING. USE OF SETTINGS BELOW MIN REQUIRED CRIMP HEIGHT SETTING WILL CAUSE DAMAGE TO CRIMP TOOLING.

QTY	REQD	PER	ASSY	PART NO	DESCRIPTION	ITEM NO			
-	1	1	1	1	1	1	1490525-3	DEPRESSOR, WIRE	73
-	1	1	1	1	1	1	1530007	PRINT, APPLICATOR LOG SHEET	72
-	1	1	1	1	1	1	1338705-3	DOCUMENTATION PACKAGE	71
-	3	3	3	3	3	3	1-23147-4	SPRING, DEPRESSOR	70
-	1	1	1	1	1	1	1490524-1	SPACER, DEPRESSOR	69
-	1	1	1	1	1	1	461264-5	PLATE, IDENTIFICATION	68
-	2	2	2	2	2	2	21017-2	SCR_DRIVE(#2x.19)ID PLATE	67
-	1	1	1	1	1	1	1424350-1	HOLDER, PIN, WIRED	65
-	1	1	1	1	1	1	3-18031-0	SCR_SKT_SET(M6X6)RAM	64
-	2	2	2	2	2	2	2-18032-5	SCR_SOC_SET(M5X20)DRAG	61
-	1	1	1	1	1	1	18024-7	SCR_BHC(M4X10)ANVIL	60
-	1	1	1	1	1	1	5-18022-2	SCR_HEX(M4X8)FEED FINGER	59
-	1	1	1	1	1	1	1338685-1	PAWL, FEED	56
-	4	4	4	4	4	4	18024-8	SCR_BHC(M4x12)SHEAR HOLDER	54
-	2	2	2	2	2	2	1-18023-4	SCR_SOC_CAP (M4x20)	53
-	1	1	1	1	1	1	18030-1	NUT_HEX(M3)HOLD DOWN	52
-	1	1	1	1	1	1	811242-5	BUMPER, HOLDDOWN	51
-	1	1	1	1	1	1	690753-2	SPACER, TONKER	50
-	1	1	1	1	1	1	18024-3	SCR_BHC(M3X10)CAM	49
-	-	1	-	-	1	-	1338675-1	CAM, PRE FEED 30 & 40 mm ST	48
-	-	1	-	-	1	-	1338676-1	CAM, POST FEED 30 & 40 mm ST	47
-	1	1	1	1	1	1	1320999-4	APPLICATOR BASIC SUBASSY	46
-	1	1	1	1	1	1	690191-1	PLUG, NYLON	45
-	1	1	1	1	1	1	1338660-5	RAM	44
-	1	1	1	1	1	1	2-18024-6	SCR_BHC(M8X25)RAM	41
-	1	1	1	1	1	1	690125-1	SHIM SUBASSY	39
-	1	1	1	1	1	1	469367-8	SPACER, FINE ADJUST	38
-	1	1	1	1	1	1	879103-3	FINE ADJUST HEAD SUBASSY	37
-	1	1	1	1	1	1	1320934-2	SUPPORT, TERMINAL	34
-	2	2	2	2	2	2	1-18024-0	SCR_BHC(M4X20)STRIP GUIDE	33
-	1	1	1	1	1	1	18027-2	WASHER, FLAT(M4)	32
-	1	1	1	1	1	1	1-18023-2	SCR_SKT_CAP(M4X12)MOUNT BLOCK	31
-	1	1	1	1	1	1	1320908-1	SPACER, STRIP GUIDE	30
-	1	1	1	1	1	1	1633073-1	STRIP GUIDE PLATE ASSY	29
-	1	1	1	1	1	1	1-455888-0	SPACER, FRONT SHEAR DEP	28
-	2	2	2	2	2	2	1-22284-0	SPRING, DRAG	27
-	1	1	1	1	1	1	356835-1	LEVER, DRAG RELEASE	26
-	1	1	1	1	1	1	240792-1	DRAG, TERMINAL	25
-	1	1	1	1	1	1	1320928-1	PLATE, STRIP GUIDE	24
-	1	1	1	1	1	1	980371-4	SCR_SHC_SHLD	23
-	1	-	1	-	1	-	690472-2	STRIPPER	22
-	1	1	1	1	1	1	1-18023-1	SCR_SHC(M4X10)STRIPPER	21
-	4	4	4	4	4	4	18025-2	WASHER_LOCK(M4)STRIPPER	20
-	-	1	-	-	1	-	690472-1	STRIPPER	19
-	1	-	-	1	-	-	1338684-1	HOLDER, SHEAR, FRONT (NO-CUT)	17
-	1	1	1	1	1	1	3-22280-3	SPRING, SHEAR	12
-	1	1	1	1	1	1	356885-4	STOP, SHEAR	11
-	-	1	-	1	-	-	1320921-1	HOLDER, SHEAR, FRONT (CUT)	10
-	1	1	1	1	1	1	462006-1	SHEAR, FLOAT (FRONT)	9
1	2	2	2	1	1	1	4-1333203-9	ANVIL	8
-	1	1	1	1	1	1	6-240641-5	SPACER, DEPRESSOR (REAR)	7
-	1	1	1	1	1	1	2-455889-0	DEPRESSOR, SHEAR (FRONT)	5
-	1	1	1	1	1	1	2-238011-5	SPACER, BLOCK CRIMPER	4
1	2	2	2	1	1	1	1-1424909-3	CRIMPER, INSULATION	3
1	2	2	2	1	1	1	2-456404-5	CRIMPER, WIRE	1

THIS DRAWING IS A CONTROLLED DOCUMENT.

APPROVED: TELBIN 1500T04  
 NAME: FINE ADJ SIDE FD HD-1 APPL

DATE: 6-2008

SCALE: 1 OF 1

REV: C1

# Mouser Electronics

Authorized Distributor

Click to View Pricing, Inventory, Delivery & Lifecycle Information:

[TE Connectivity:](#)

[1530007-6](#)