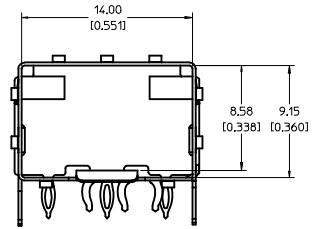
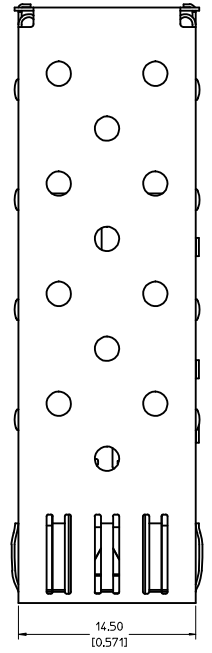
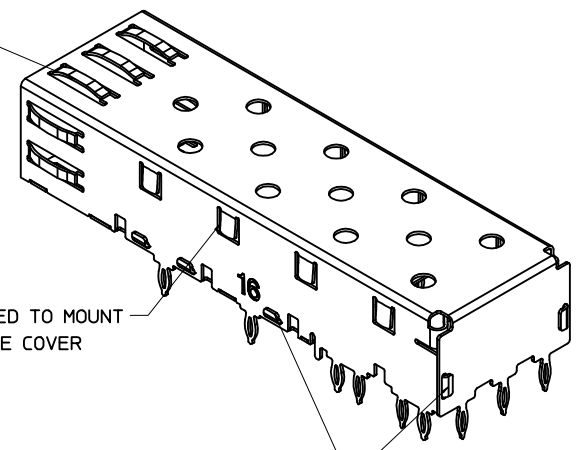


**BOTTOM VIEW**

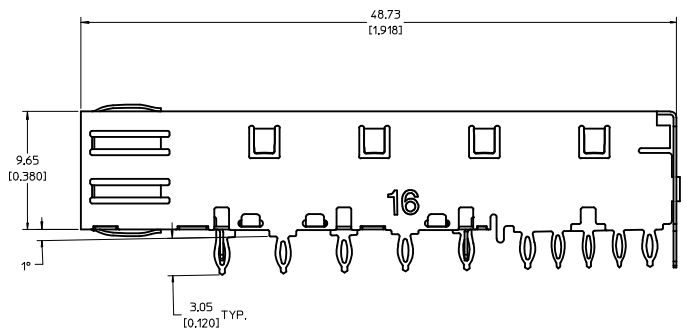


SPRING FINGER GASKET WITH TWO POINTS OF CONTACT. COMPLIES WITH (SFP) MSA BOARD AND BEZEL LOCATIONS.



TABS USED TO MOUNT LIGHT PIPE COVER

ONE PIECE DESIGN SECURLY FASTENED

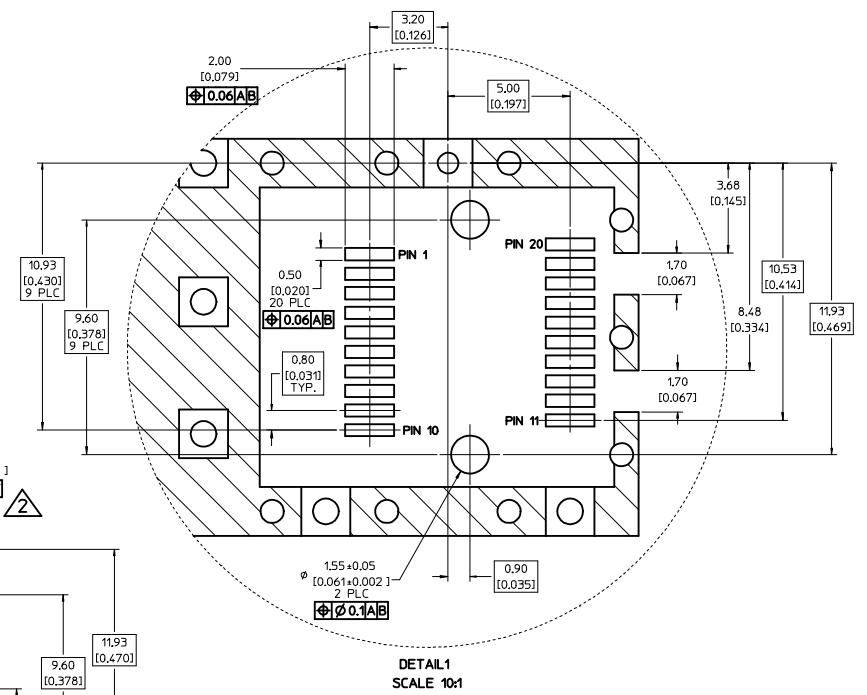
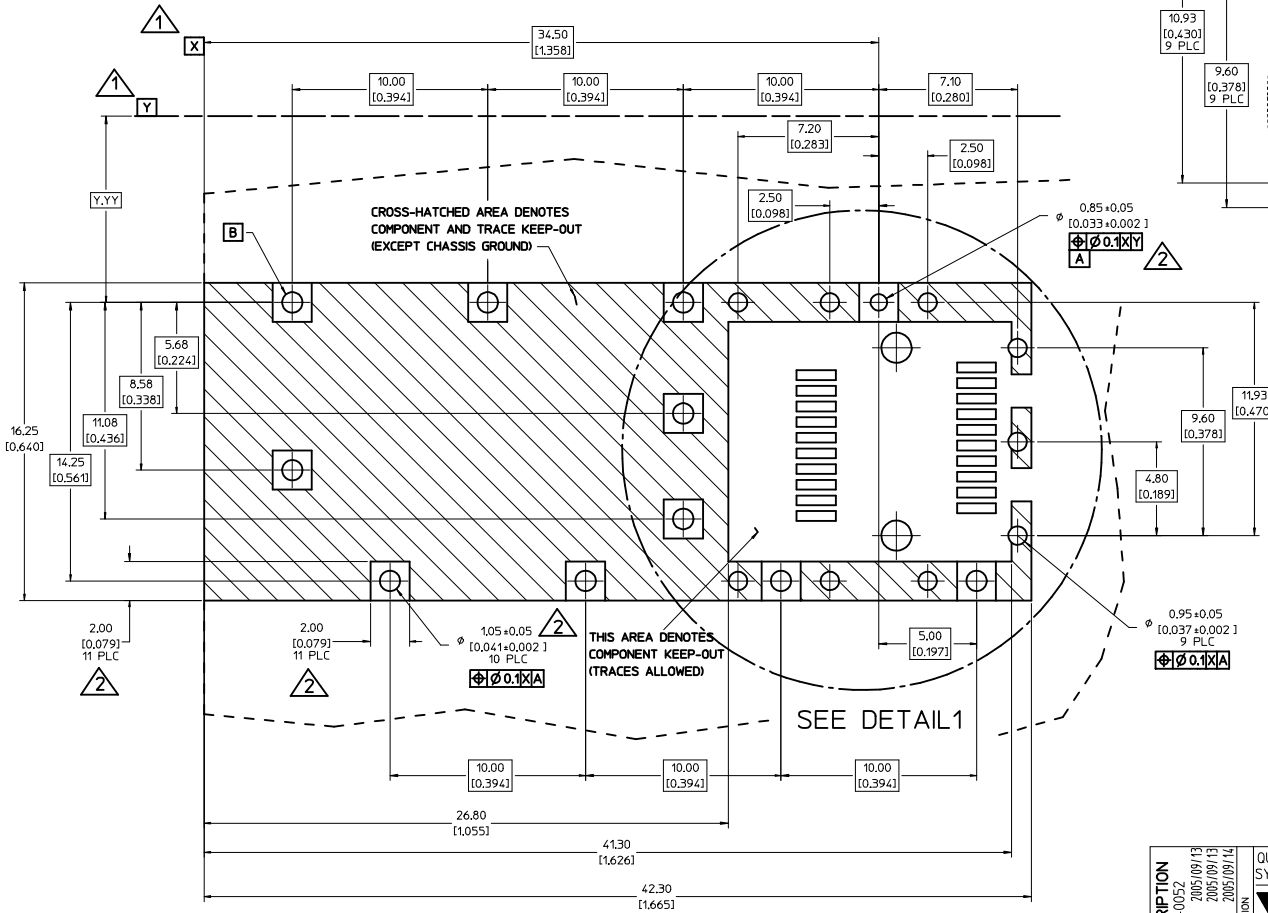


**NOTES:**

1. PRESS FIT LEGS, 0.120 INCHES LONG. 1.57 [0.062] MINIMUM PCB THICKNESS.
2. THIS CAGE IS FOR SINGLE SIDED USE ONLY.
3. CAN BE USED WITH THE FOLLOWING LIGHT PIPE PART NUMBERS:  
  
747260001 - LIGHT PIPE FROM BACK TO TOP (REFER TO DOCUMENT SD-74726-001)  
  
747260002 - LIGHT PIPE FROM SIDE TO TOP (REFER TO DOCUMENT SD-74726-002)
4. MATERIAL: COPPER ALLOY  
PLATING: PRE-PLATED WITH NICKEL
5. THIS PART MEETS THE RESTRICTION OF HAZARDOUS SUBSTANCES IN ELECTRICAL AND ELECTRONIC EQUIPMENT (ROHS) DIRECTIVE (2002/95/EC).

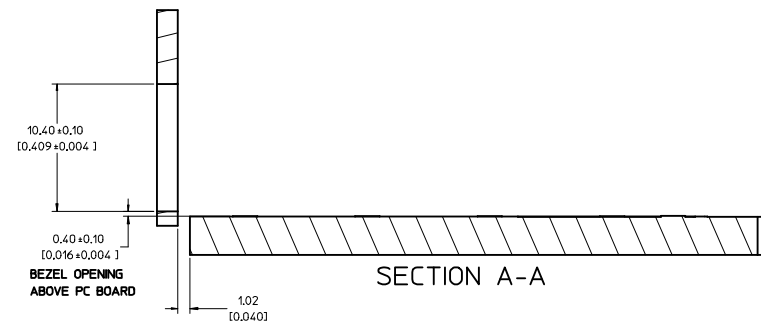
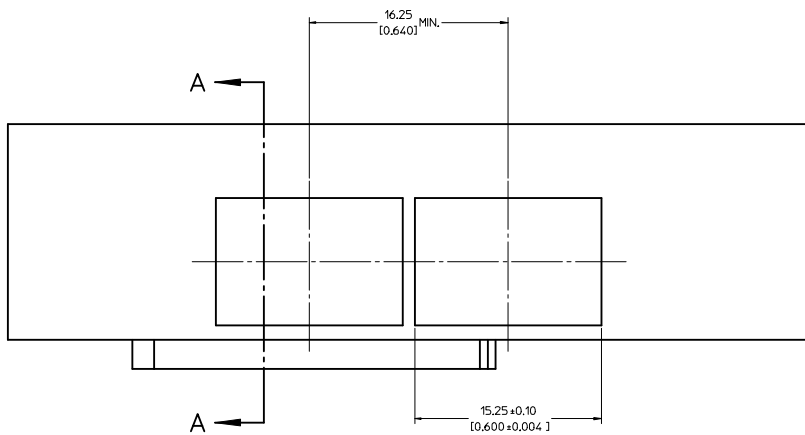
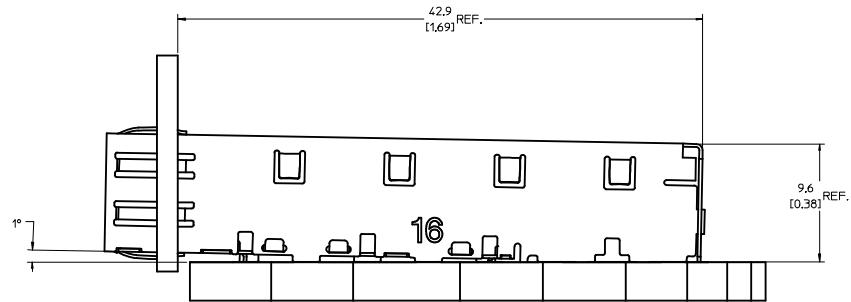
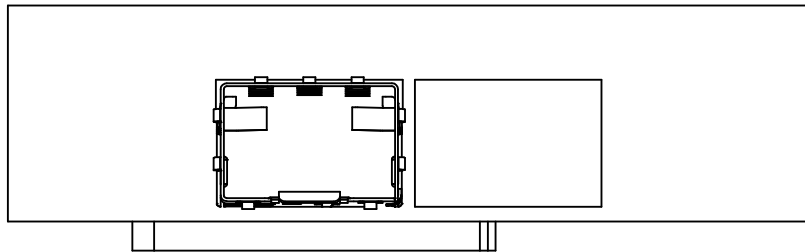
<b>ENTER DESCRIPTION</b> EC NO: USY2006-0052 DRAWN BY: KSI MONSON 2005/09/13 CHECKED BY: CHYKORUSSELL 2005/09/13 APPROVED BY: APPR:BRUSSELL 2005/09/14	<b>QUALITY SYMBOLS</b> ▽=0 ▽=0	<b>GENERAL TOLERANCES (UNLESS SPECIFIED)</b>		<b>DIMENSION STYLE</b> MM/IN	<b>SCALE</b> 5:1	<b>DESIGN UNITS</b> METRIC	THIRD ANGLE PROJECTION	
		4 PLACES ±--- ±--- 3 PLACES ±--- ±.005 2 PLACES ±0.13 ±.01 1 PLACE ±0.25 ±--- ANGULAR ± 1°	mm INCH	DRAWN BY: KSI MONSON DATE: 2005/09/12	TITLE: SFP ONE PIECE CAGE PRESS-FIT (0.120 LEGS) FOR PCI			
		DRAFT WHERE APPLICABLE MUST REMAIN WITHIN DIMENSIONS	MATERIAL NO: 747370016 SIZE: D	APPROVED BY: BRUSSELL DATE: 2005/09/12	DOCUMENT NO: SD-74737-0016	MOLEX INCORPORATED		SHEET NO: 1 OF 3

- 1 DATUM AND BASIC DIMENSIONS ESTABLISHED BY CUSTOMER.
- 2 PADS AND VIAS ARE CHASSIS GROUND.
- 3 HOLE LAYOUT SHOWN IS FOR SINGLE SIDED MOUNTING ONLY.
- 4 CONNECTOR PAD LAYOUT PER SFP MSA, WILL ACCOMMODATE MOLEX CONNECTOR SERIES 74441 OR EQUIVALENT.



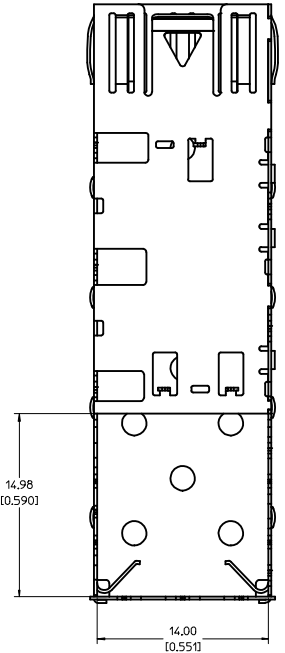
<b>ENTER DESCRIPTION</b> IEC NO.: USY2006-0052 DRAWN BY: KSI MONSO 2005/09/13 CHECKED BY: CHYD BRUSSELL 2005/09/13 APPROVED BY: APPR: BRUSSELL 2005/09/14	<b>QUALITY SYMBOLS</b> $\nabla=0$ $\nabla=0$	<b>GENERAL TOLERANCES (UNLESS SPECIFIED)</b> <table border="1"> <thead> <tr> <th></th> <th>mm</th> <th>INCH</th> </tr> </thead> <tbody> <tr> <td>4 PLACES</td> <td><math>\pm</math>---</td> <td><math>\pm</math>---</td> </tr> <tr> <td>3 PLACES</td> <td><math>\pm</math>---</td> <td><math>\pm</math>.005</td> </tr> <tr> <td>2 PLACES</td> <td><math>\pm</math>0.13</td> <td><math>\pm</math>.01</td> </tr> <tr> <td>1 PLACE</td> <td><math>\pm</math>0.25</td> <td><math>\pm</math>---</td> </tr> </tbody> </table>		mm	INCH	4 PLACES	$\pm$ ---	$\pm$ ---	3 PLACES	$\pm$ ---	$\pm$ .005	2 PLACES	$\pm$ 0.13	$\pm$ .01	1 PLACE	$\pm$ 0.25	$\pm$ ---	<b>DIMENSION STYLE</b> MM/IN	<b>SCALE</b> 8:1	<b>DESIGN UNITS</b> METRIC	<b>THIRD ANGLE PROJECTION</b> 
		mm	INCH																		
	4 PLACES	$\pm$ ---	$\pm$ ---																		
	3 PLACES	$\pm$ ---	$\pm$ .005																		
2 PLACES	$\pm$ 0.13	$\pm$ .01																			
1 PLACE	$\pm$ 0.25	$\pm$ ---																			
<b>REVISIONS</b> A	<b>DRAFT WHERE APPLICABLE MUST REMAIN WITHIN DIMENSIONS</b>	<b>MATERIAL NO.</b> 747370016	<b>DATE</b> 2005/09/12	<b>DATE</b> 2005/09/12	<b>DATE</b> 2005/09/12	<b>MOLEX INCORPORATED</b>															
	<b>SIZE</b> D	<b>DOCUMENT NO.</b> SD-74737-0016	<b>DATE</b> 2005/09/12	<b>DATE</b> 2005/09/12	<b>DATE</b> 2005/09/12	<b>MOLEX INCORPORATED</b>															
	<b>THIS DRAWING CONTAINS INFORMATION THAT IS PROPRIETARY TO MOLEX INCORPORATED AND SHOULD NOT BE USED WITHOUT WRITTEN PERMISSION</b>	<b>SHEET NO.</b> 2 OF 3	<b>DATE</b> 2005/09/12	<b>DATE</b> 2005/09/12	<b>DATE</b> 2005/09/12	<b>DATE</b> 2005/09/12	<b>MOLEX INCORPORATED</b>														

20 19 18 17 16 15 14 13 12 11 10 9 8 7 6 5 4 3 2 1

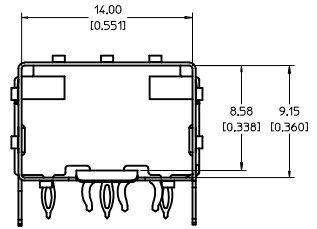
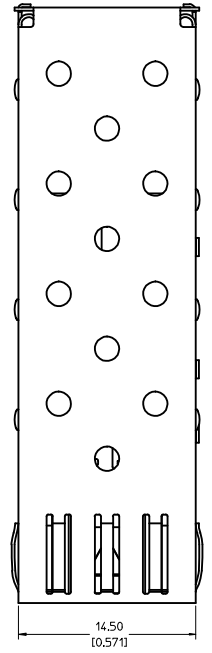


<b>ENTER DESCRIPTION</b> IEC NO: USY2006-0052 DRAWN BY: KSI MONSO 2005/09/13 CHYK BRUSSELL 2005/09/13 APPR: BRUSSELL 2005/09/14	<b>QUALITY SYMBOLS</b> ▽=0 ▽=0	<b>GENERAL TOLERANCES (UNLESS SPECIFIED)</b> <table border="1"> <thead> <tr> <th></th> <th>mm</th> <th>INCH</th> </tr> </thead> <tbody> <tr> <td>4 PLACES</td> <td>±---</td> <td>±---</td> </tr> <tr> <td>3 PLACES</td> <td>±---</td> <td>±.005</td> </tr> <tr> <td>2 PLACES</td> <td>±0.13</td> <td>±.01</td> </tr> <tr> <td>1 PLACE</td> <td>±0.25</td> <td>±---</td> </tr> </tbody> </table> ANGULAR ± 1°		mm	INCH	4 PLACES	±---	±---	3 PLACES	±---	±.005	2 PLACES	±0.13	±.01	1 PLACE	±0.25	±---	<b>DIMENSION STYLE</b> MM/IN	SCALE 5:1	DESIGN UNITS METRIC	THIRD ANGLE PROJECTION
		mm	INCH																		
	4 PLACES	±---	±---																		
	3 PLACES	±---	±.005																		
2 PLACES	±0.13	±.01																			
1 PLACE	±0.25	±---																			
DRAWN BY: KSI MONSO 2005/09/12 CHECKED BY: BRUSSELL 2005/09/12 APPROVED BY: BRUSSELL 2005/09/12	DATE: 2005/09/12 DATE: 2005/09/12 DATE: 2005/09/12	TITLE SFP ONE PIECE CAGE PRESS-FIT (0.120 LEGS) FOR PCI	MOLEX INCORPORATED																		
MATERIAL NO: 747370016	DOCUMENT NO: SD-74737-0016	DRAFT WHERE APPLICABLE MUST REMAIN WITHIN DIMENSIONS		SIZE D	THIS DRAWING CONTAINS INFORMATION THAT IS PROPRIETARY TO MOLEX INCORPORATED AND SHOULD NOT BE USED WITHOUT WRITTEN PERMISSION																
			SHEET NO. 3 OF 3																		

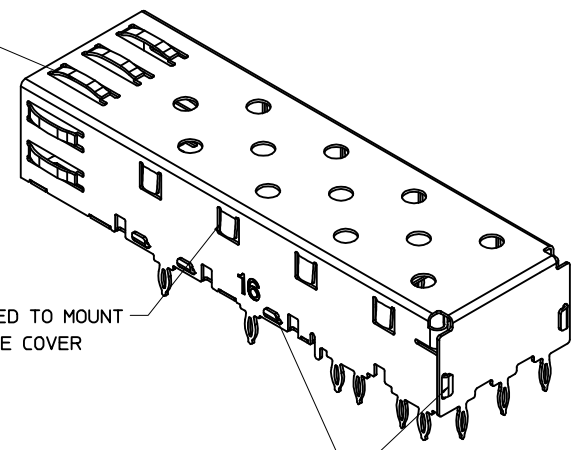
19 18 17 16 15 14 13 12 11 10 9 8 7 6 5 4 3 2 1



**BOTTOM VIEW**

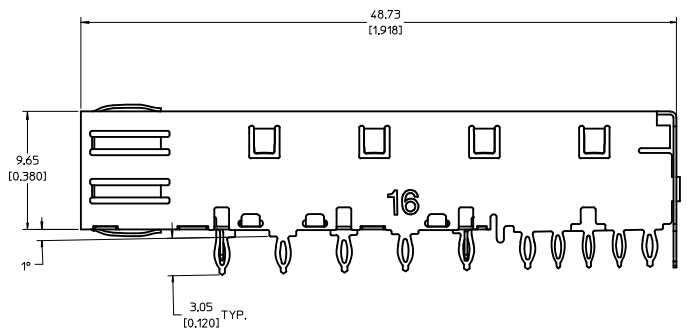


SPRING FINGER GASKET WITH TWO POINTS OF CONTACT. COMPLIES WITH (SFP) MSA BOARD AND BEZEL LOCATIONS.



TABS USED TO MOUNT LIGHT PIPE COVER

ONE PIECE DESIGN SECURLY FASTENED

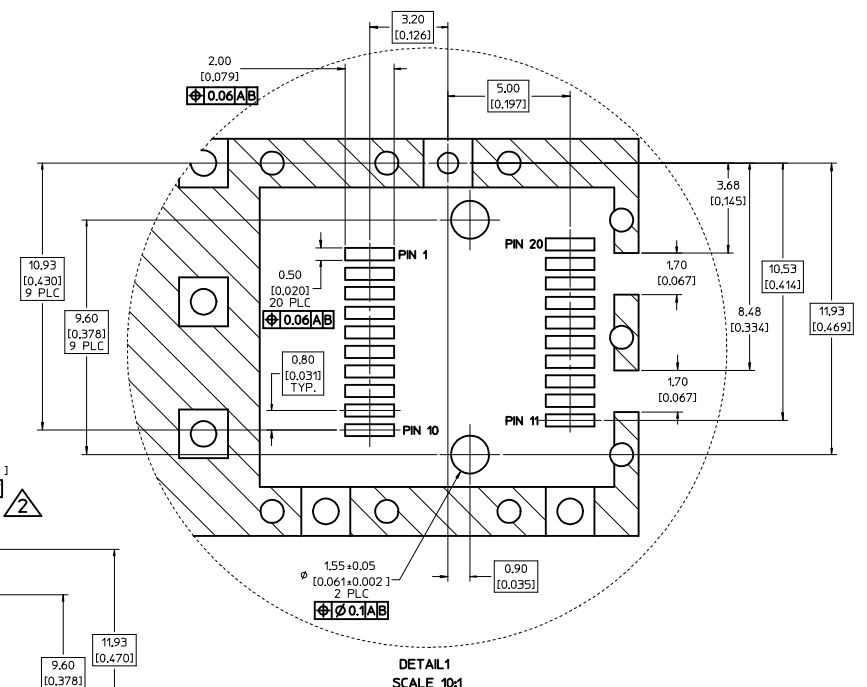
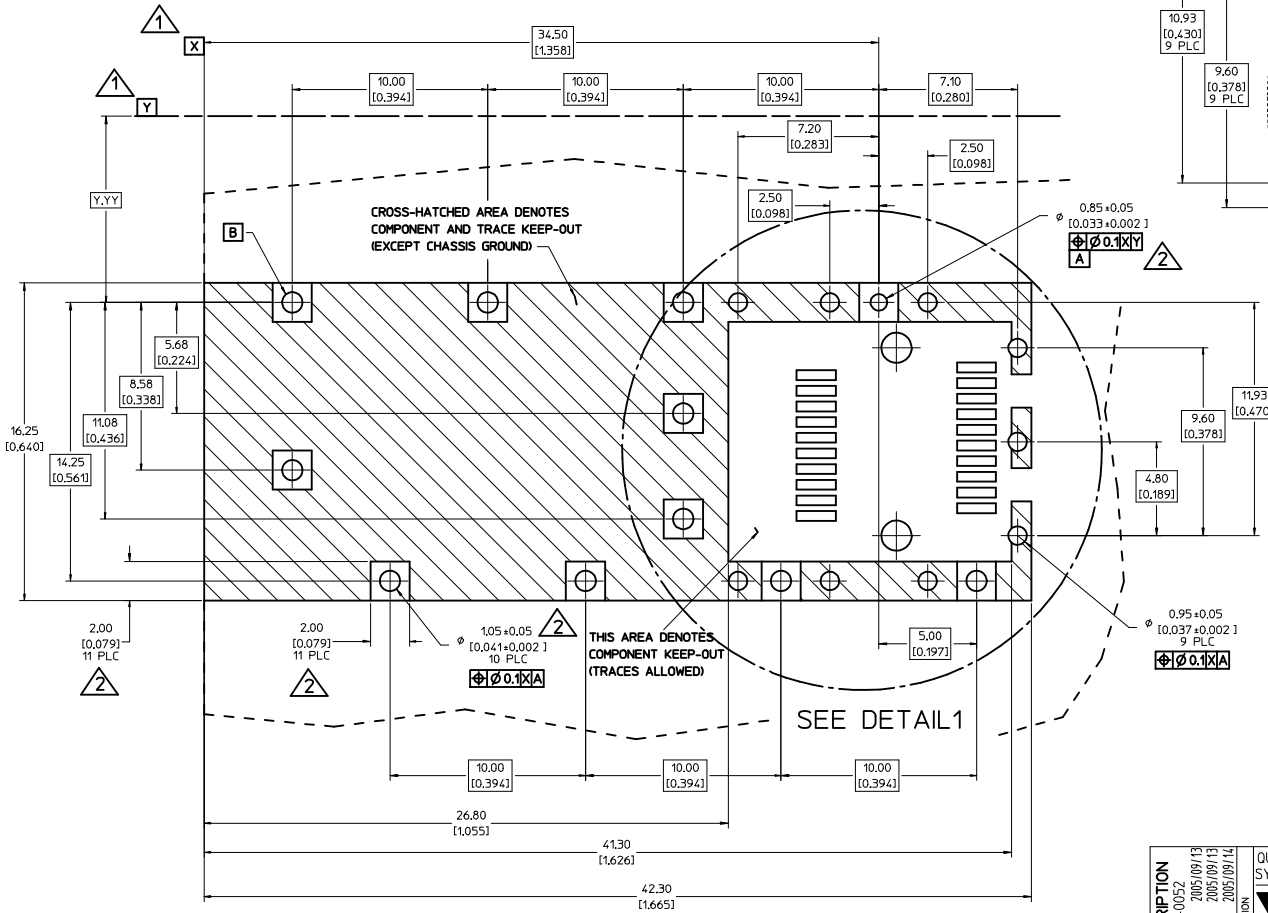


**NOTES:**

1. PRESS FIT LEGS, 0.120 INCHES LONG. 1.57 [0.062] MINIMUM PCB THICKNESS.
2. THIS CAGE IS FOR SINGLE SIDED USE ONLY.
3. CAN BE USED WITH THE FOLLOWING LIGHT PIPE PART NUMBERS:  
  
747260001 - LIGHT PIPE FROM BACK TO TOP (REFER TO DOCUMENT SD-74726-001)  
  
747260002 - LIGHT PIPE FROM SIDE TO TOP (REFER TO DOCUMENT SD-74726-002)
4. MATERIAL: COPPER ALLOY  
PLATING: PRE-PLATED WITH NICKEL
5. THIS PART MEETS THE RESTRICTION OF HAZARDOUS SUBSTANCES IN ELECTRICAL AND ELECTRONIC EQUIPMENT (ROHS) DIRECTIVE (2002/95/EC).

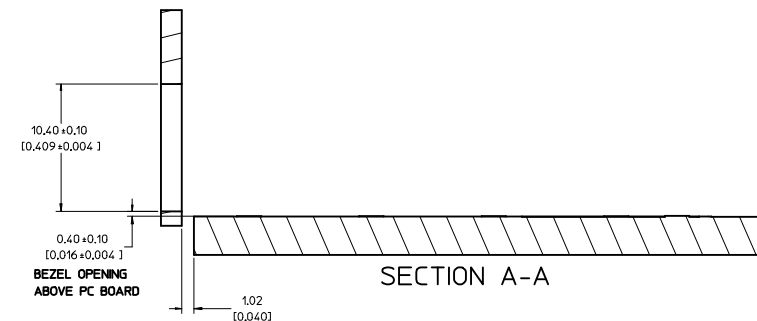
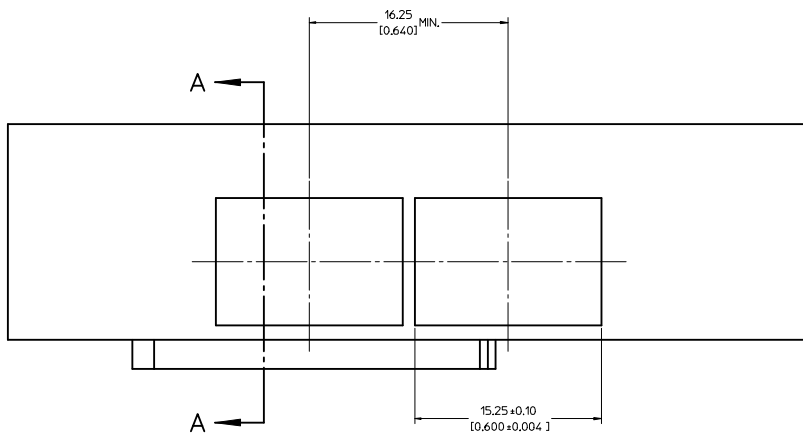
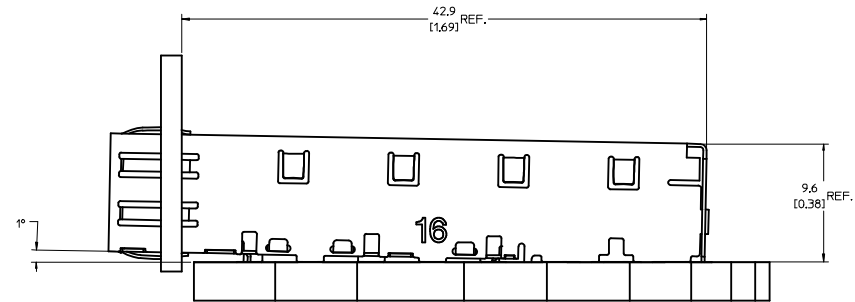
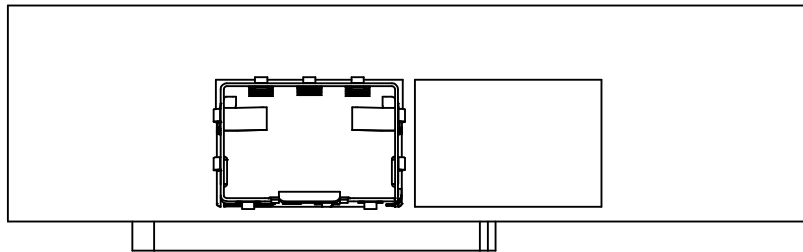
<b>ENTER DESCRIPTION</b> EC NO: USY2006-0052 DRAWN BY: KSI MONSON 2005/09/13 CHECKED BY: CHYKORUSSELL 2005/09/13 APPROVED BY: APPR:BRUSSELL 2005/09/14	<b>QUALITY SYMBOLS</b> ▽=0 ▽=0	<b>GENERAL TOLERANCES (UNLESS SPECIFIED)</b>		<b>DIMENSION STYLE</b> MM/IN	<b>SCALE</b> 5:1	<b>DESIGN UNITS</b> METRIC	THIRD ANGLE PROJECTION		
		4 PLACES ±--- ±---	3 PLACES ±--- ±.005	2 PLACES ±0.13 ±.01	1 PLACE ±0.25 ±---	DRAWN BY: KSI MONSON 2005/09/12 CHECKED BY: BRUSSELL 2005/09/12 APPROVED BY: BRUSSELL 2005/09/12			
		ANGULAR ± 1°		DRAFT WHERE APPLICABLE MUST REMAIN WITHIN DIMENSIONS		TITLE: SFP ONE PIECE CAGE PRESS-FIT (0.120 LEGS) FOR PCI MATERIAL NO: 747370016 DOCUMENT NO: SD-74737-0016			
		MOLEX INCORPORATED		SHEET NO. 1 OF 3		THIS DRAWING CONTAINS INFORMATION THAT IS PROPRIETARY TO MOLEX INCORPORATED AND SHOULD NOT BE USED WITHOUT WRITTEN PERMISSION			

- 1 DATUM AND BASIC DIMENSIONS ESTABLISHED BY CUSTOMER.
- 2 PADS AND VIAS ARE CHASSIS GROUND.
- 3 HOLE LAYOUT SHOWN IS FOR SINGLE SIDED MOUNTING ONLY.
- 4 CONNECTOR PAD LAYOUT PER SFP MSA, WILL ACCOMMODATE MOLEX CONNECTOR SERIES 74441 OR EQUIVALENT.



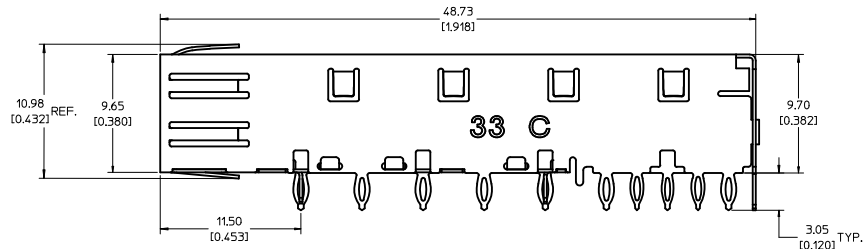
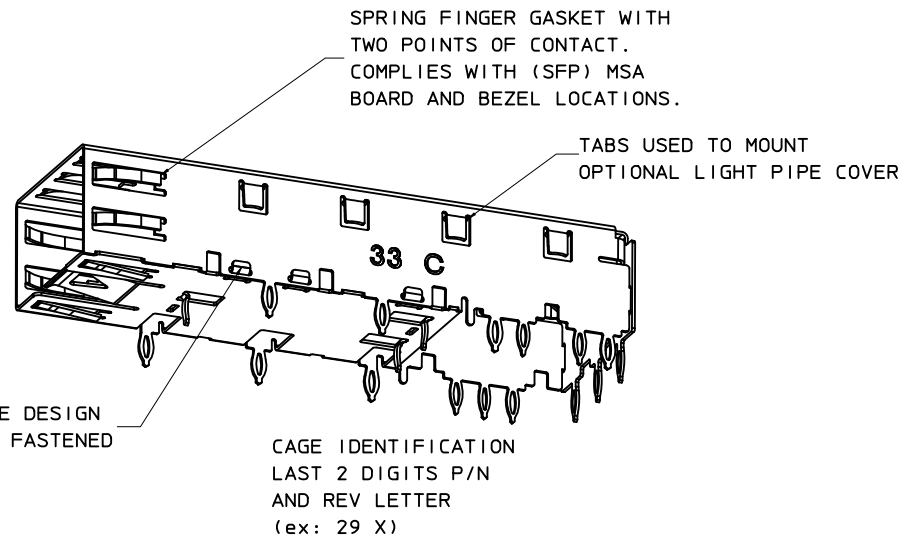
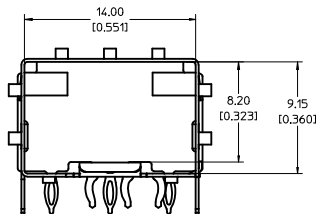
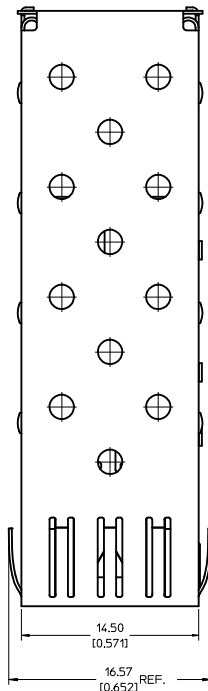
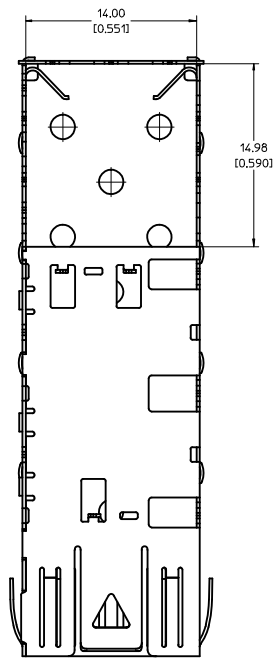
<b>ENTER DESCRIPTION</b> IEC NO.: USY2006-0052 DRAWN BY: KSI MONSO 2005/09/13 CHECKED BY: CHYD BRUSSELL 2005/09/13 APPROVED BY: APPR:BRUSSELL 2005/09/14	<b>QUALITY SYMBOLS</b> ▽=0 ▽=0 ▽=0	<b>GENERAL TOLERANCES (UNLESS SPECIFIED)</b>		<b>DIMENSION STYLE</b> MM/IN		<b>SCALE</b> 8:1	<b>DESIGN UNITS</b> METRIC	THIRD ANGLE PROJECTION	
		4 PLACES ± --- ± --- 3 PLACES ± --- ± .005 2 PLACES ± 0.13 ± .01 1 PLACE ± 0.25 ± ---	mm INCH	DRAWN BY KSI MONSO	DATE 2005/09/12	<b>TITLE</b> SFP ONE PIECE CAGE PRESS-FIT (0,120 LEGS) FOR PCI			
		DRAFT WHERE APPLICABLE MUST REMAIN WITHIN DIMENSIONS		MATERIAL NO. 747370016	DOCUMENT NO. SD-74737-0016	<b>MOLEX INCORPORATED</b>			
		SIZE D		THIS DRAWING CONTAINS INFORMATION THAT IS PROPRIETARY TO MOLEX INCORPORATED AND SHOULD NOT BE USED WITHOUT WRITTEN PERMISSION					

20 19 18 17 16 15 14 13 12 11 10 9 8 7 6 5 4 3 2 1



<b>ENTER DESCRIPTION</b> IEC NO: USY2006-0052 DRAWN BY: KSI MONSO 2005/09/13 CHECKED BY: CHYD BRUSSELL 2005/09/13 APPROVED BY: APPR: BRUSSELL 2005/09/14 REV: A	<b>QUALITY SYMBOLS</b> ▽=0 ▽=0	<b>GENERAL TOLERANCES (UNLESS SPECIFIED)</b> <table border="1"> <thead> <tr> <th></th> <th>mm</th> <th>INCH</th> </tr> </thead> <tbody> <tr> <td>4 PLACES</td> <td>±---</td> <td>±---</td> </tr> <tr> <td>3 PLACES</td> <td>±---</td> <td>±.005</td> </tr> <tr> <td>2 PLACES</td> <td>±0.13</td> <td>±.01</td> </tr> <tr> <td>1 PLACE</td> <td>±0.25</td> <td>±---</td> </tr> </tbody> </table> ANGULAR ± 1°		mm	INCH	4 PLACES	±---	±---	3 PLACES	±---	±.005	2 PLACES	±0.13	±.01	1 PLACE	±0.25	±---	<b>DIMENSION STYLE</b> MM/IN	SCALE 5:1	DESIGN UNITS METRIC	THIRD ANGLE PROJECTION
		mm	INCH																		
	4 PLACES	±---	±---																		
	3 PLACES	±---	±.005																		
2 PLACES	±0.13	±.01																			
1 PLACE	±0.25	±---																			
DRAWN BY: KSI MONSO 2005/09/12 CHECKED BY: BRUSSELL 2005/09/12 APPROVED BY: BRUSSELL 2005/09/12	DATE: 2005/09/12 DATE: 2005/09/12 DATE: 2005/09/12	TITLE SFP ONE PIECE CAGE PRESS-FIT (0.120 LEGS) FOR PCI	MOLEX INCORPORATED																		
MATERIAL NO: 747370016	DOCUMENT NO: SD-74737-0016	DRAFT WHERE APPLICABLE MUST REMAIN WITHIN DIMENSIONS		SIZE D	THIS DRAWING CONTAINS INFORMATION THAT IS PROPRIETARY TO MOLEX INCORPORATED AND SHOULD NOT BE USED WITHOUT WRITTEN PERMISSION																
					SHEET NO. 3 OF 3																

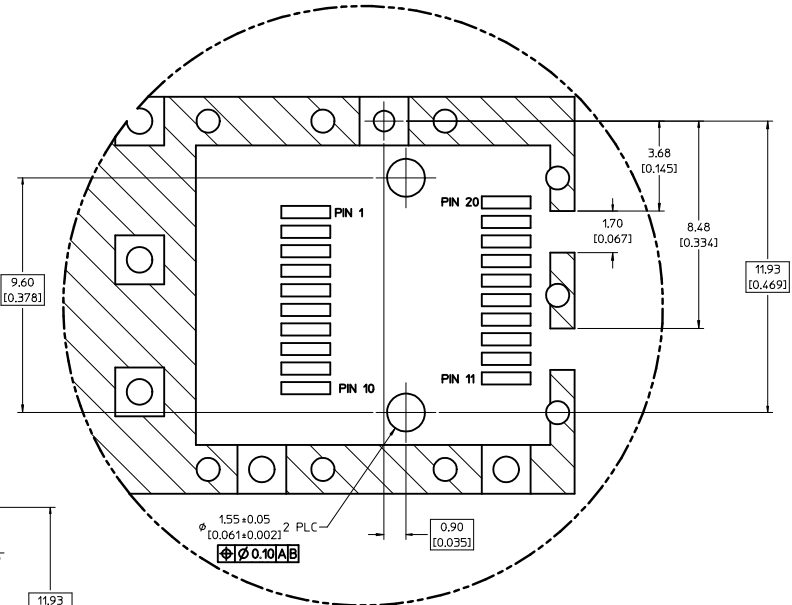
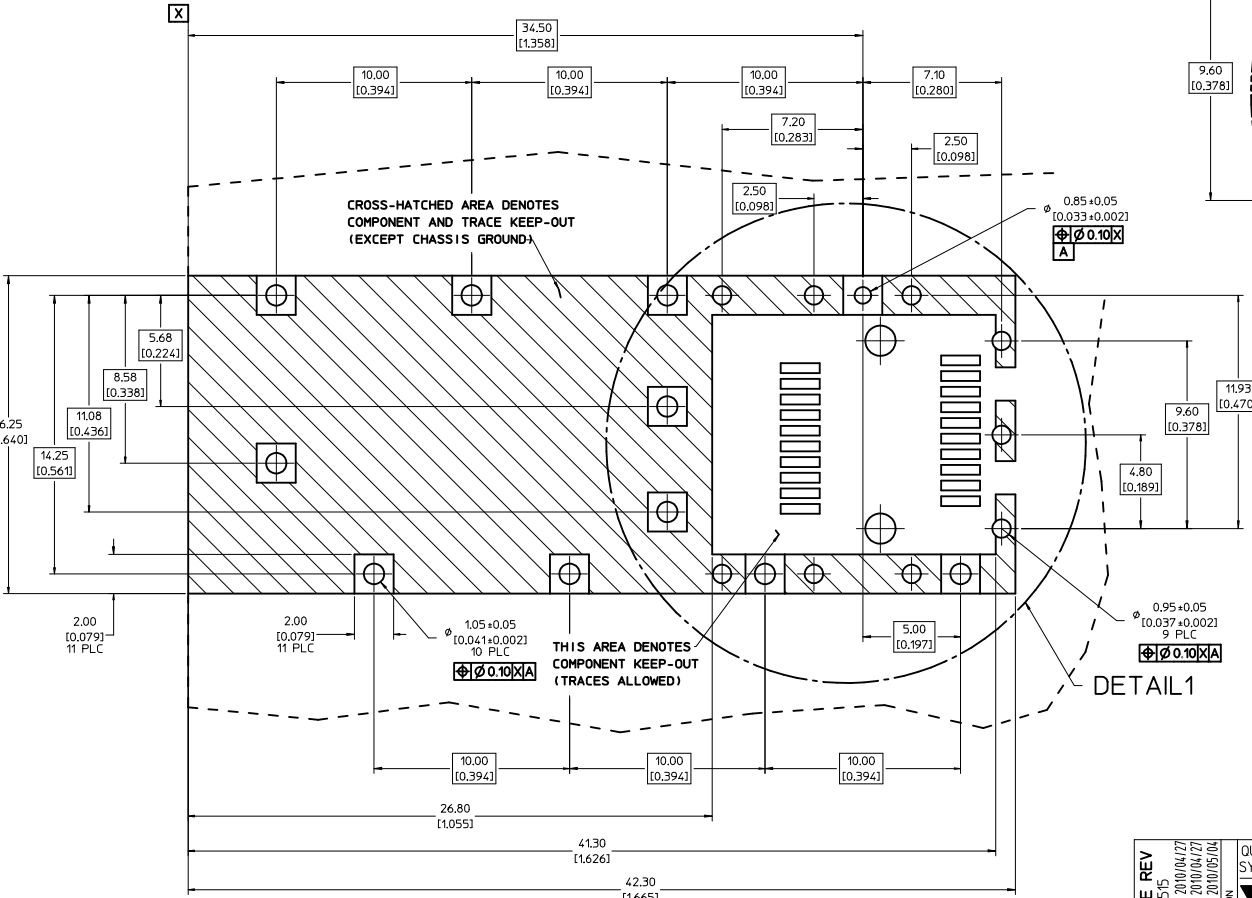
19 18 17 16 15 14 13 12 11 10 9 8 7 6 5 4 3 2 1



- NOTES:**
- PRESS FIT LEGS, 0.120 INCHES LONG.  
1.57 [0.062] MINIMUM PCB THICKNESS.
  - THIS CAGE IS FOR SINGLE SIDED USE ONLY.
  - CAN BE USED WITH THE FOLLOWING LIGHT PIPE PART NUMBERS:  
747260001 - LIGHT PIPE FROM BACK TO TOP  
(REFER TO DOCUMENT SD-74726-001)  
747260002 - LIGHT PIPE FROM SIDE TO TOP  
(REFER TO DOCUMENT SD-74726-002)
  - MATERIAL: COPPER ALLOY  
PLATING: PRE-PLATED WITH NICKEL
  - THIS PART MEETS THE RESTRICTION OF HAZARDOUS SUBSTANCES IN ELECTRICAL AND ELECTRONIC EQUIPMENT (ROHS) DIRECTIVE (2002/95/EC).

<b>REV DIMS-CAGE REV</b> EC NO: USY2010-0515 DRAWN BY: CHYOKI JANOTA APPROV: K JANOTA 2010/04/27 2010/05/04	<b>QUALITY SYMBOLS</b> ▽=0 ▽=0	<b>GENERAL TOLERANCES (UNLESS SPECIFIED):</b> <table border="1"> <tr> <th></th> <th>mm</th> <th>INCH</th> </tr> <tr> <td>4 PLACES</td> <td>±0.05</td> <td>±0.002</td> </tr> <tr> <td>3 PLACES</td> <td>±0.025</td> <td>±0.001</td> </tr> <tr> <td>2 PLACES</td> <td>±0.13</td> <td>±0.01</td> </tr> <tr> <td>1 PLACE</td> <td>±0.25</td> <td>±0.01</td> </tr> </table>			mm	INCH	4 PLACES	±0.05	±0.002	3 PLACES	±0.025	±0.001	2 PLACES	±0.13	±0.01	1 PLACE	±0.25	±0.01	<b>DIMENSION STYLE</b> MM/IN	<b>SCALE</b> 5:1	<b>DESIGN UNITS</b> METRIC	THIRD ANGLE PROJECTION
			mm	INCH																		
4 PLACES	±0.05	±0.002																				
3 PLACES	±0.025	±0.001																				
2 PLACES	±0.13	±0.01																				
1 PLACE	±0.25	±0.01																				
<b>DRAFT WHERE APPLICABLE MUST REMAIN WITHIN DIMENSIONS</b>		<b>MATERIAL NO.</b> 747370033	<b>DATE</b> 2009/09/28	<b>DATE</b> 2009/09/28	<b>DATE</b> 2009/09/28	<b>TITLE</b> SFP ONE PIECE CAGE PRESS-FIT (0.120 LEGS) W/ MODIFIED LATCH TANG																
		<b>MOLEX INCORPORATED</b>		<b>MOLEX INCORPORATED</b>		<b>SHEET NO.</b> 1 OF 3																

1. PADS AND VIAS ARE CHASSIS GROUND.
2. HOLE LAYOUT SHOWN IS FOR SINGLE SIDED MOUNTING ONLY.
3. CONNECTOR PAD LAYOUT PER SFP MSA, WILL ACCOMMODATE MOLEX CONNECTOR SERIES 74441 OR EQUIVALENT.



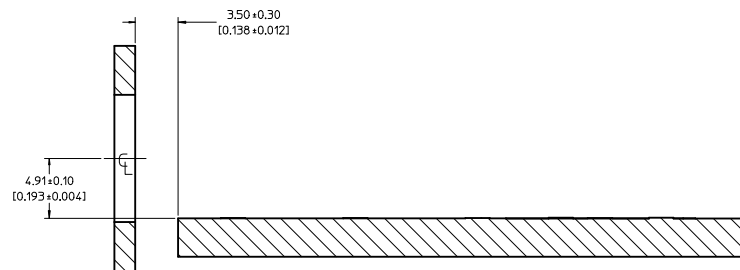
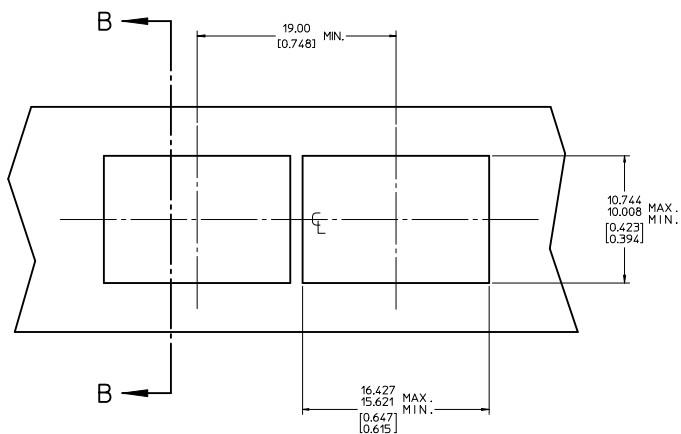
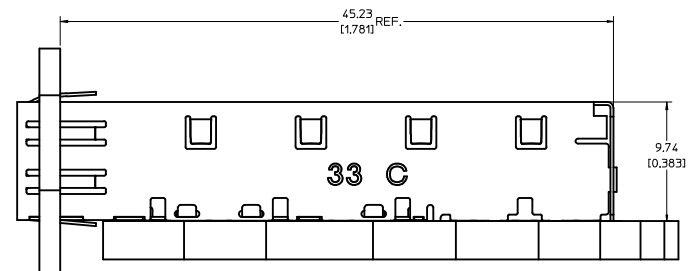
DETAIL 1  
SCALE 10:1

DETAIL 1

<b>REV DIMS-CAGE REV</b> IEC NO: USY2010-0515 DRAWN/SECRET 2010/04/27 CHKD/K JANITA 2010/04/27 APPR/K JANITA 2010/05/04	QUALITY SYMBOLS	GENERAL TOLERANCES (UNLESS SPECIFIED)	DIMENSION STYLE	SCALE	DESIGN UNITS	THIRD ANGLE PROJECTION
	▽=0 ▽=0	mm INCH 4 PLACES ± --- ± --- 3 PLACES ± --- ± 0.005 2 PLACES ± 0.13 ± 0.01 1 PLACE ± 0.25 ± --- ANGULAR ± 1 °	MM/IN	8:1	METRIC	DRAWN BY DATE JRESENDE 2009/09/28 CHECKED BY DATE JRESENDE 2009/09/28 APPROVED BY DATE JRESENDE 2009/09/28
	DRAFT WHERE APPLICABLE MUST REMAIN WITHIN DIMENSIONS	MATERIAL NO.	DOCUMENT NO.	TITLE	SFP ONE PIECE CAGE PRESS-FIT (0.120 LEGS) W/ MODIFIED LATCH TANG	
	SIZE D	747370033	SD-74737-0033	MOLEX INCORPORATED	SHEET NO.	2 OF 3



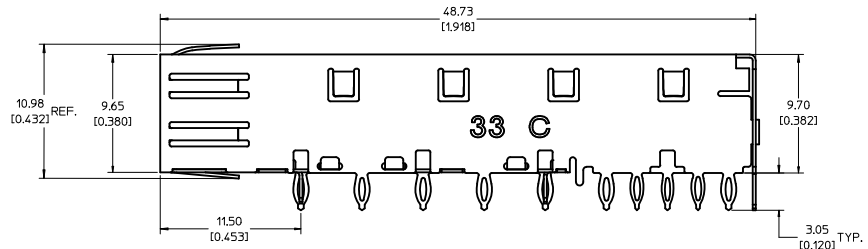
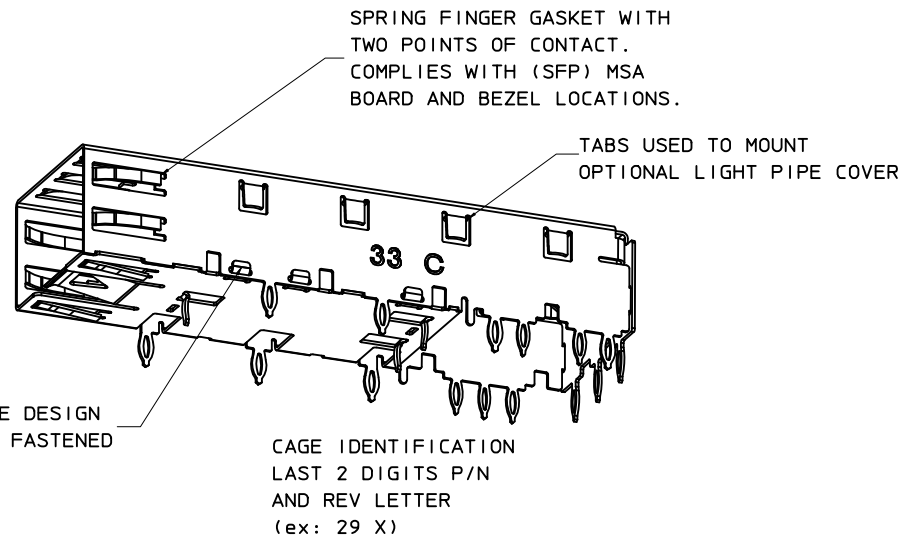
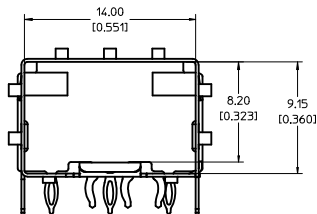
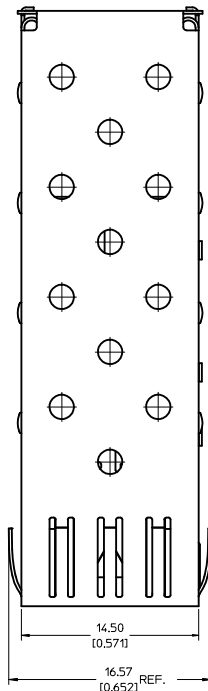
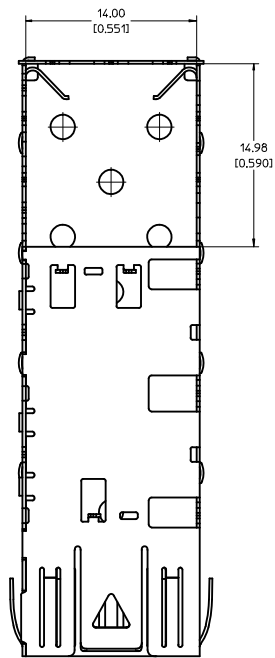
20 19 18 17 16 15 14 13 12 11 10 9 8 7 6 5 4 3 2 1



SECTION B-B

<b>REV DIMS-CAGE REV</b> IEC NO: USY2010-0515 DRAWN/SECRET 2010/04/27 CHK/DK/LAN/TA 2010/04/27 APPR/K/LAN/TA 2010/05/04 REV DESCRIPTION	QUALITY SYMBOLS	GENERAL TOLERANCES (UNLESS SPECIFIED)	DIMENSION STYLE	SCALE	DESIGN UNITS	THIRD ANGLE PROJECTION
	▽=0 ▽=0	mm INCH 4 PLACES ± --- ± --- 3 PLACES ± --- ± 0.005 2 PLACES ± 0.13 ± 0.01 1 PLACE ± 0.25 ± --- ANGULAR ± 1 °	MM/IN	5:1	METRIC	DRAWN BY DATE JRESENDE 2009/09/28 CHECKED BY DATE JRESENDE 2009/09/28 APPROVED BY DATE JRESENDE 2009/09/28
	DRAFT WHERE APPLICABLE MUST REMAIN WITHIN DIMENSIONS	MATERIAL NO. <b>747370033</b>	DOCUMENT NO. <b>SD-74737-0033</b>	TITLE <b>SFP ONE PIECE CAGE                  PRESS-FIT (0.120 LEGS)                  W/ MODIFIED LATCH TANG</b>		SHEET NO. 3 OF 3
	THIS DRAWING CONTAINS INFORMATION THAT IS PROPRIETARY TO MOLEX INCORPORATED AND SHOULD NOT BE USED WITHOUT WRITTEN PERMISSION					

19 18 17 16 15 14 13 12 11 10 9 8 7 6 5 4 3 2 1

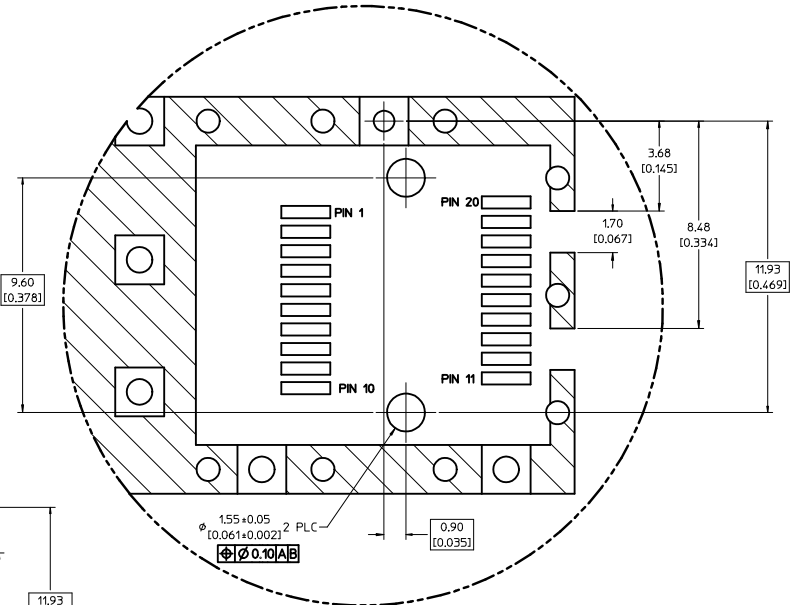
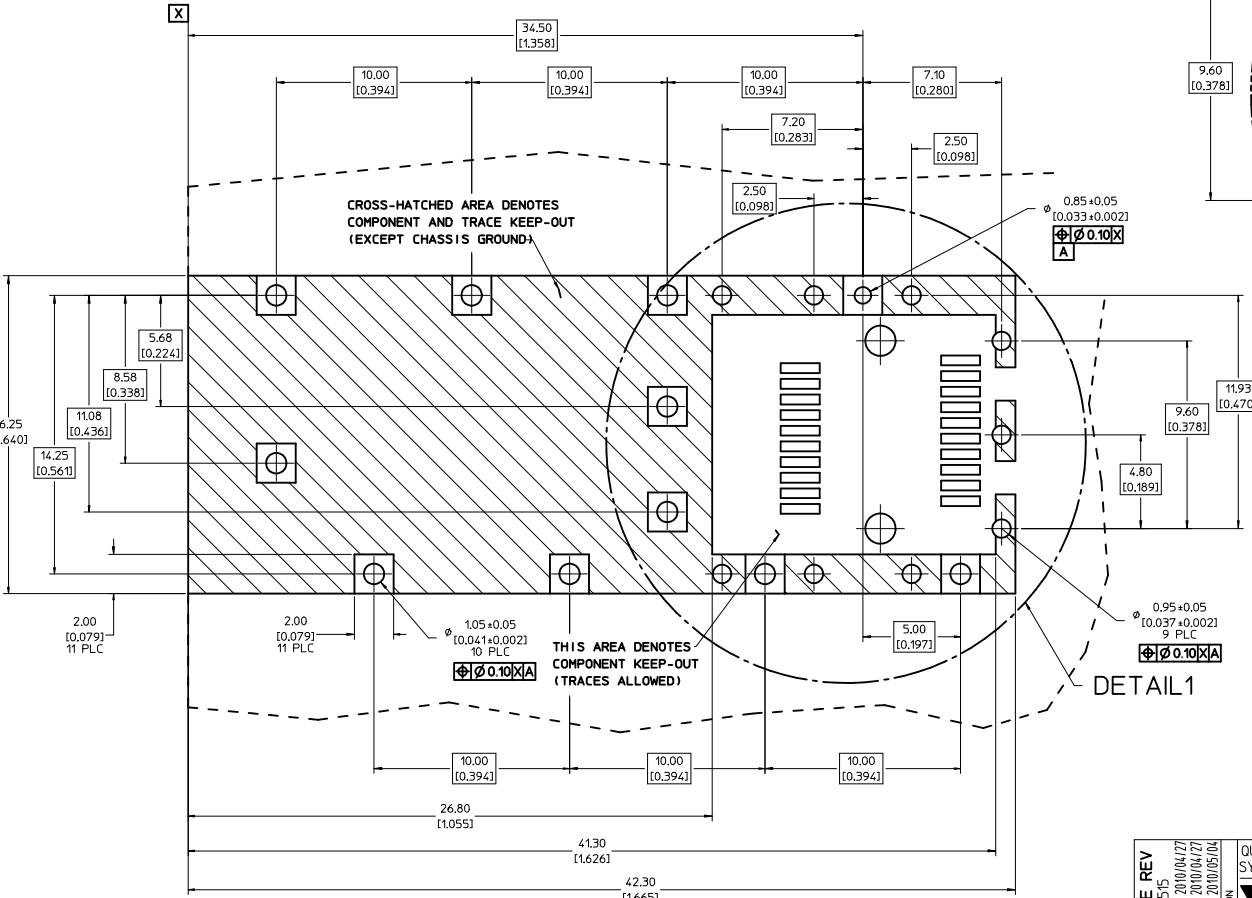


**NOTES:**

- PRESS FIT LEGS, 0.120 INCHES LONG.  
1.57 [0.062] MINIMUM PCB THICKNESS.
- THIS CAGE IS FOR SINGLE SIDED USE ONLY.
- CAN BE USED WITH THE FOLLOWING LIGHT PIPE PART NUMBERS:  
747260001 - LIGHT PIPE FROM BACK TO TOP  
(REFER TO DOCUMENT SD-74726-001)  
747260002 - LIGHT PIPE FROM SIDE TO TOP  
(REFER TO DOCUMENT SD-74726-002)
- MATERIAL: COPPER ALLOY  
PLATING: PRE-PLATED WITH NICKEL
- THIS PART MEETS THE RESTRICTION OF HAZARDOUS SUBSTANCES IN ELECTRICAL AND ELECTRONIC EQUIPMENT (ROHS) DIRECTIVE (2002/95/EC).

<b>REV DIMS-CAGE REV</b> EC NO: USY2010-0515 DRAWN BY: CHYOKI JANOTA APPROV: K JANOTA 2010/04/27 2010/05/04	<b>QUALITY SYMBOLS</b> ▽=0 ▽=0	<b>GENERAL TOLERANCES (UNLESS SPECIFIED):</b> <table border="1"> <tr> <th></th> <th>mm</th> <th>INCH</th> </tr> <tr> <td>4 PLACES</td> <td>±0.05</td> <td>±0.002</td> </tr> <tr> <td>3 PLACES</td> <td>±0.025</td> <td>±0.001</td> </tr> <tr> <td>2 PLACES</td> <td>±0.13</td> <td>±0.01</td> </tr> <tr> <td>1 PLACE</td> <td>±0.25</td> <td>±0.01</td> </tr> </table>			mm	INCH	4 PLACES	±0.05	±0.002	3 PLACES	±0.025	±0.001	2 PLACES	±0.13	±0.01	1 PLACE	±0.25	±0.01	<b>DIMENSION STYLE</b> MM/IN	<b>SCALE</b> 5:1	<b>DESIGN UNITS</b> METRIC	THIRD ANGLE PROJECTION
			mm	INCH																		
4 PLACES	±0.05	±0.002																				
3 PLACES	±0.025	±0.001																				
2 PLACES	±0.13	±0.01																				
1 PLACE	±0.25	±0.01																				
<b>DRAFT WHERE APPLICABLE MUST REMAIN WITHIN DIMENSIONS</b>		<b>MATERIAL NO.</b> 747370033	<b>DATE</b> 2009/09/28	<b>DATE</b> 2009/09/28	<b>DATE</b> 2009/09/28	<b>TITLE</b> SFP ONE PIECE CAGE PRESS-FIT (0.120 LEGS) W/ MODIFIED LATCH TANG																
		<b>MOLEX INCORPORATED</b>		<b>MOLEX INCORPORATED</b>		<b>SHEET NO.</b> 1 OF 3																

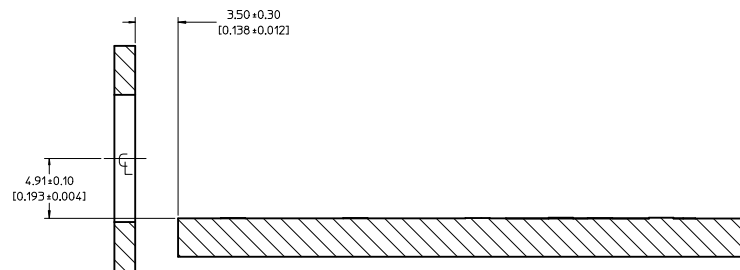
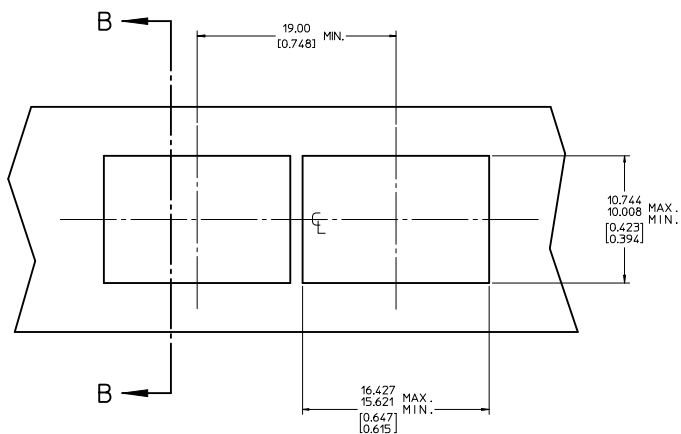
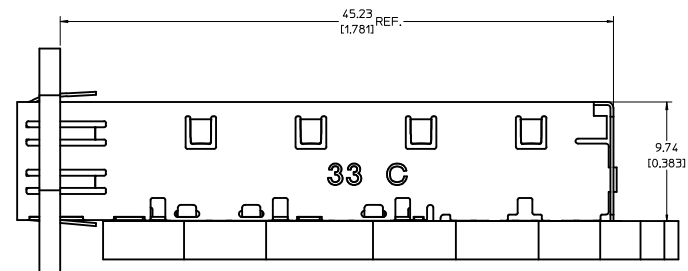
1. PADS AND VIAS ARE CHASSIS GROUND.
2. HOLE LAYOUT SHOWN IS FOR SINGLE SIDED MOUNTING ONLY.
3. CONNECTOR PAD LAYOUT PER SFP MSA, WILL ACCOMMODATE MOLEX CONNECTOR SERIES 74441 OR EQUIVALENT.



DETAIL 1  
SCALE 10:1

<b>REV DIMS-CAGE REV</b> IEC NO: USY2010-0515 DRAWN/SECRET 2010/04/27 CHKD/K.LANITA 2010/04/27 APPR/K.LANITA 2010/05/04	<b>QUALITY SYMBOLS</b> ▽=0 ▽=0	<b>GENERAL TOLERANCES (UNLESS SPECIFIED)</b>		DIMENSION STYLE <b>MM/IN</b>	SCALE <b>8:1</b>	DESIGN UNITS <b>METRIC</b>	THIRD ANGLE PROJECTION	
		4 PLACES ±--- ±---	3 PLACES ±--- ±0.005	DRAWN BY JRESENDE	DATE 2009/09/28	TITLE <b>SFP ONE PIECE CAGE PRESS-FIT (0.120 LEGS) W/ MODIFIED LATCH TANG</b>		
		2 PLACES ±0.13 ±0.01	1 PLACE ±0.25 ±---	CHECKED BY JRESENDE	DATE 2009/09/28	MOLEX INCORPORATED		
		ANGULAR ± 1 °		APPROVED BY JRESENDE	DATE 2009/09/28	MATERIAL NO. <b>747370033</b>	DOCUMENT NO. <b>SD-74737-0033</b>	SHEET NO. <b>2 OF 3</b>
DRAFT WHERE APPLICABLE MUST REMAIN WITHIN DIMENSIONS		THIS DRAWING CONTAINS INFORMATION THAT IS PROPRIETARY TO MOLEX INCORPORATED AND SHOULD NOT BE USED WITHOUT WRITTEN PERMISSION						

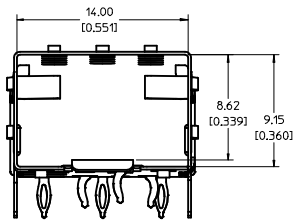
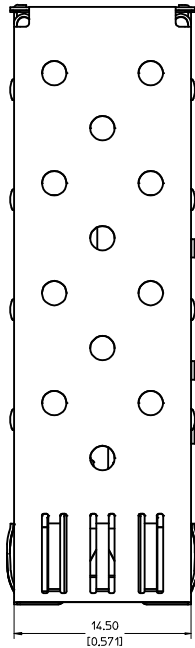
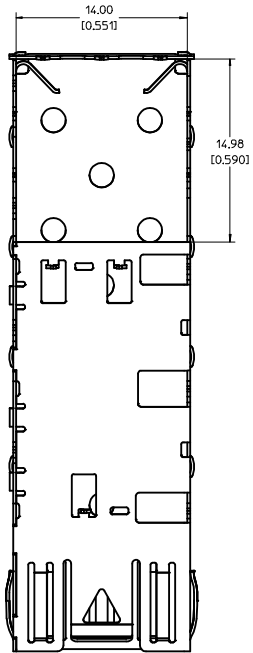
20 19 18 17 16 15 14 13 12 11 10 9 8 7 6 5 4 3 2 1



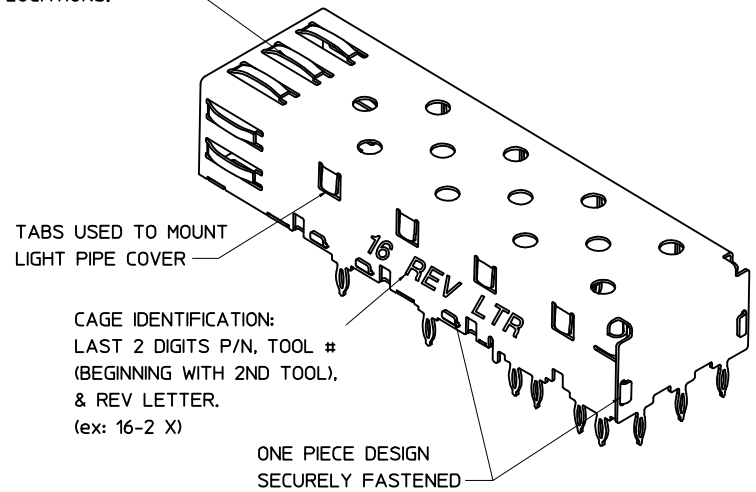
SECTION B-B

<b>REV DIMS-CAGE REV</b> IEC NO: USY2010-0515 DRAWN BY: CHYKOKI ANOTA CHECKED BY: APPR:K.IANOTA DATE: 2010/04/27 DATE: 2010/05/04	QUALITY SYMBOLS	GENERAL TOLERANCES (UNLESS SPECIFIED)	DIMENSION STYLE	SCALE	DESIGN UNITS	THIRD ANGLE PROJECTION	
	▽=0 ▽=0	mm INCH 4 PLACES ± --- ± --- 3 PLACES ± --- ± 0.005 2 PLACES ± 0.13 ± 0.01 1 PLACE ± 0.25 ± --- ANGULAR ± 1 °	MM/IN	5:1	METRIC	DRAWN BY: JRESENDE CHECKED BY: JRESENDE APPROVED BY: JRESENDE DATE: 2009/09/28 DATE: 2009/09/28 DATE: 2009/09/28	
	DRAFT WHERE APPLICABLE MUST REMAIN WITHIN DIMENSIONS	MATERIAL NO: <b>747370033</b>	DOCUMENT NO: <b>SD-74737-0033</b>	TITLE: <b>SFP ONE PIECE CAGE                  PRESS-FIT (0.120 LEGS)                  W/ MODIFIED LATCH TANG</b>		MOLEX INCORPORATED	SHEET NO: 3 OF 3
	THIS DRAWING CONTAINS INFORMATION THAT IS PROPRIETARY TO MOLEX INCORPORATED AND SHOULD NOT BE USED WITHOUT WRITTEN PERMISSION						

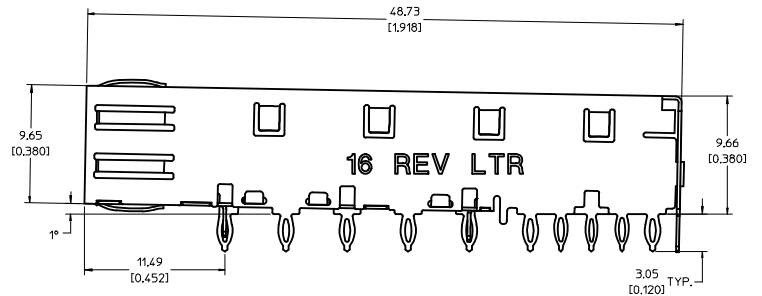
19 18 17 16 15 14 13 12 11 10 9 8 7 6 5 4 3 2 1



SPRING FINGER GASKET WITH TWO POINTS OF CONTACT. COMPLIES WITH (SFP) MSA BOARD AND BEZEL LOCATIONS.



CAGE IDENTIFICATION:  
LAST 2 DIGITS P/N, TOOL #  
(BEGINNING WITH 2ND TOOL),  
& REV LETTER.  
(ex: 16-2 X)



NOTES:

- PRESS FIT LEGS, 0.120 INCHES LONG. 1.57 [0.062] MINIMUM PCB THICKNESS.
- THIS CAGE IS FOR SINGLE SIDED USE ONLY.
- CAN BE USED WITH THE FOLLOWING LIGHT PIPE PART NUMBERS:

747260001 - LIGHT PIPE FROM BACK TO TOP  
(REFER TO DOCUMENT SD-74726-001)

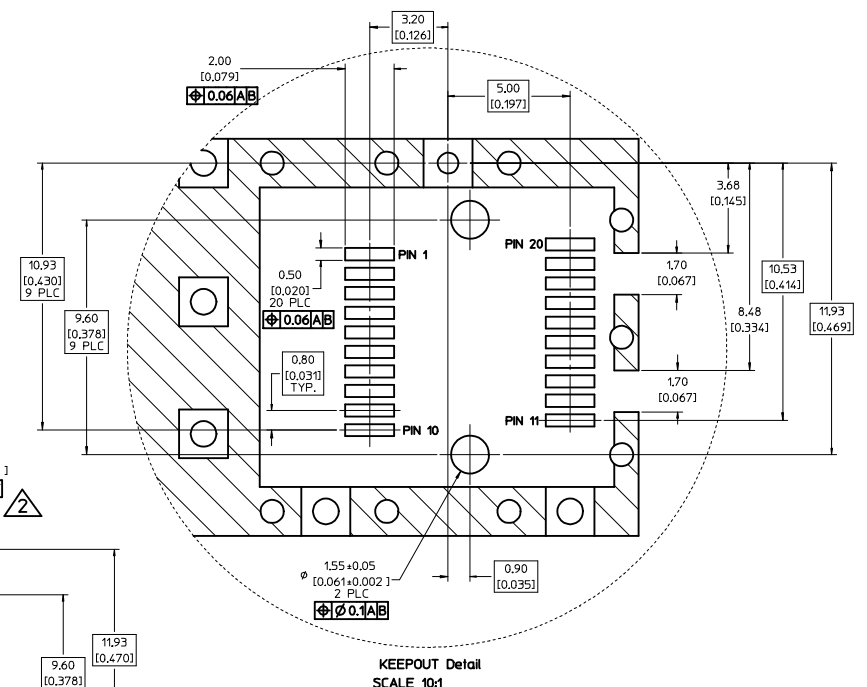
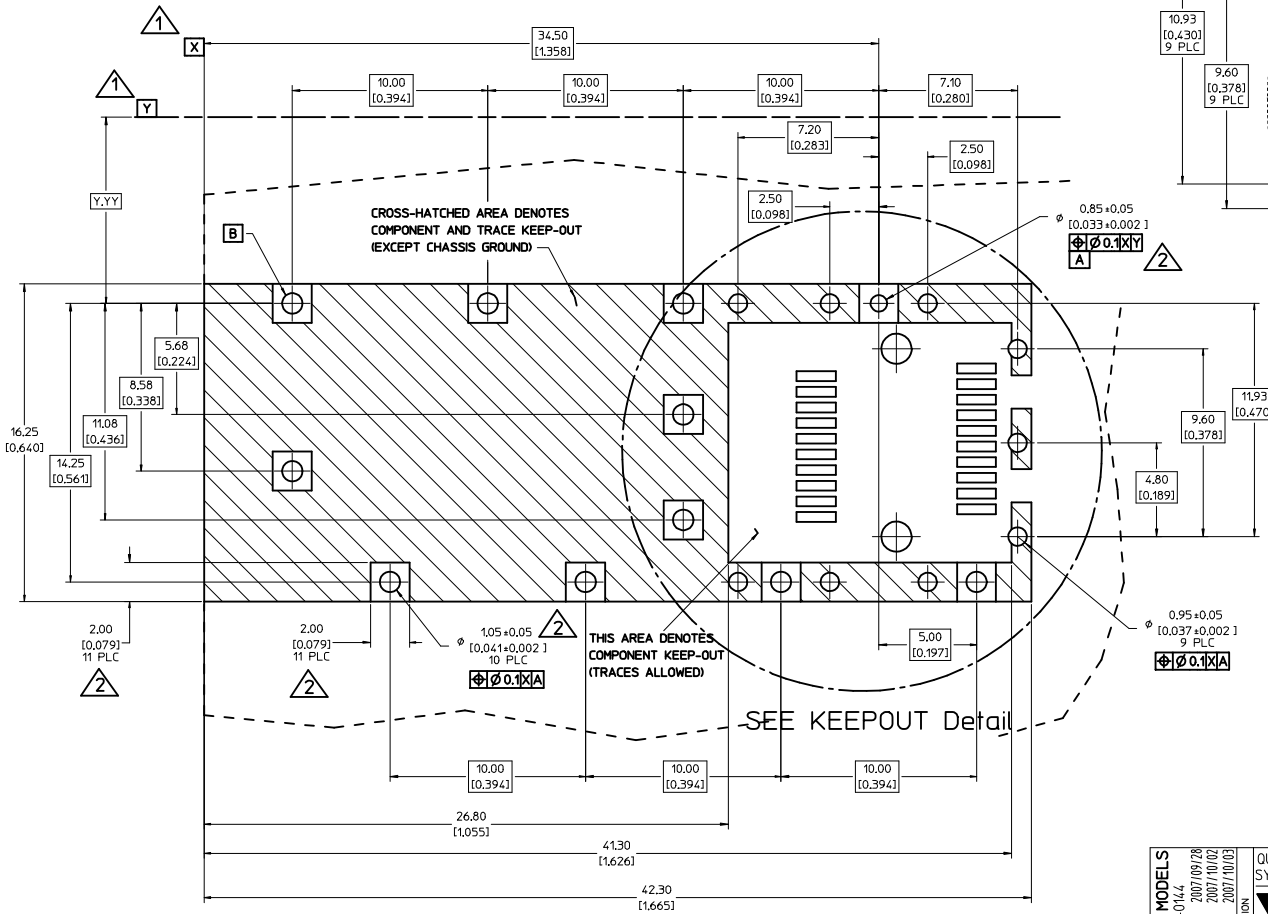
747260002 - LIGHT PIPE FROM SIDE TO TOP  
(REFER TO DOCUMENT SD-74726-002)

- MATERIAL: COPPER ALLOY  
PLATING: PRE-PLATED WITH NICKEL

- THIS PART MEETS THE RESTRICTION OF HAZARDOUS SUBSTANCES IN ELECTRICAL AND ELECTRONIC EQUIPMENT (ROHS) DIRECTIVE (2002/95/EC).

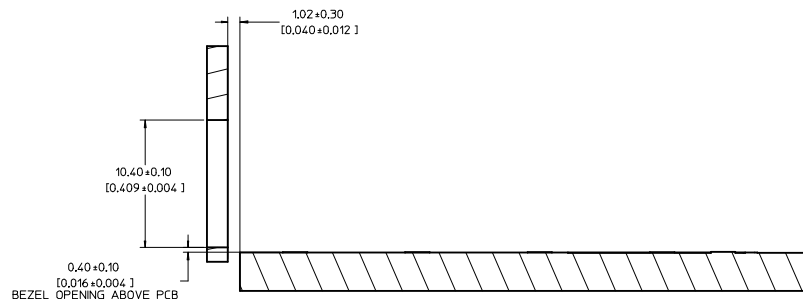
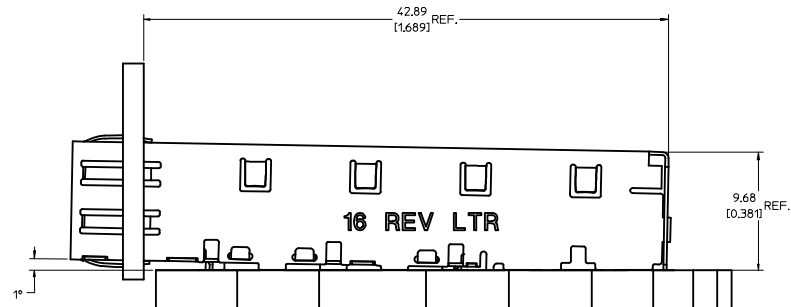
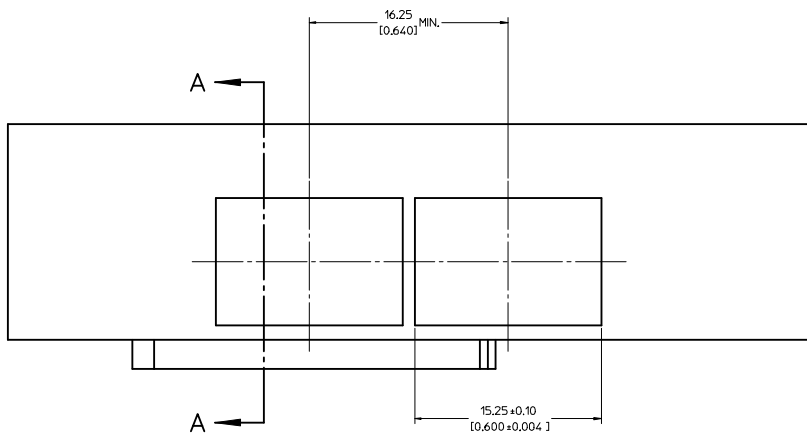
UPDATED 3D MODELS USY 2008-0144 DRAWN BY: CCOX 2007/09/28 CHKD: CCOX 2007/10/02 APPR: RMAHMOOD 2007/10/03	QUALITY SYMBOLS ▽=0 ▽=0	GENERAL TOLERANCES (UNLESS SPECIFIED)		DIMENSION STYLE MM/IN	SCALE 5:1	DESIGN UNITS METRIC	THIRD ANGLE PROJECTION	
		4 PLACES ±--- ±---	3 PLACES ±--- ±.005	2 PLACES ±0.13 ±.01	1 PLACE ±0.25 ±---	ANGULAR ± 1°	DRAWN BY: CCOX DATE: 2006/10/30 CHECKED BY: RMAHMOOD DATE: 2006/10/30 APPROVED BY: RMAHMOOD DATE: 2006/10/30	TITLE SFP ONE PIECE CAGE PRESS-FIT (0.120 LEGS) FOR PCI
		DRAFT WHERE APPLICABLE MUST REMAIN WITHIN DIMENSIONS		MATERIAL NO. 747370016	DOCUMENT NO. SD-74737-016	MOLEX INCORPORATED	SHEET NO. 1 OF 4	
		THIS DRAWING CONTAINS INFORMATION THAT IS PROPRIETARY TO MOLEX INCORPORATED AND SHOULD NOT BE USED WITHOUT WRITTEN PERMISSION						

- 1 DATUM AND BASIC DIMENSIONS ESTABLISHED BY CUSTOMER.
- 2 PADS AND VIAS ARE CHASSIS GROUND.
- 3 HOLE LAYOUT SHOWN IS FOR SINGLE SIDED MOUNTING ONLY.
- 4 CONNECTOR PAD LAYOUT PER SFP MSA, WILL ACCOMMODATE MOLEX CONNECTOR SERIES 74441 OR EQUIVALENT.



<b>UPDATED 3D MODELS</b> USY 2006-0144 DRAWN: CCOX 2007/09/28 CHYK: 2007/10/02 APPR: RMAHMOOD 2007/10/03	QUALITY SYMBOLS	GENERAL TOLERANCES (UNLESS SPECIFIED)	DIMENSION STYLE	SCALE	DESIGN UNITS	THIRD ANGLE PROJECTION
	$\nabla=0$ $\nabla=0$	mm INCH 4 PLACES ± --- ± --- 3 PLACES ± --- ± .005 2 PLACES ± 0.13 ± .01 1 PLACE ± 0.25 ± --- ANGULAR ± 1°	MM/IN	8:1	METRIC	
	DRAFT WHERE APPLICABLE MUST REMAIN WITHIN DIMENSIONS	DRAWN BY DATE CCOX 2006/10/30 CHECKED BY DATE RMAHMOOD 2006/10/30 APPROVED BY DATE RMAHMOOD 2006/10/30	TITLE <b>SFP ONE PIECE CAGE PRESS-FIT (0,120 LEGS) FOR PCI</b>			
		MATERIAL NO. <b>747370016</b> DOCUMENT NO. <b>SD-74737-016</b>	MOLEX INCORPORATED SHEET NO. <b>2 OF 4</b>			

20 19 18 17 16 15 14 13 12 11 10 9 8 7 6 5 4 3 2 1



SECTION A-A

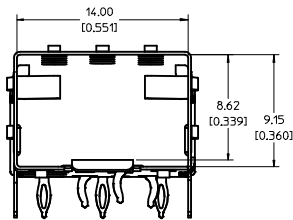
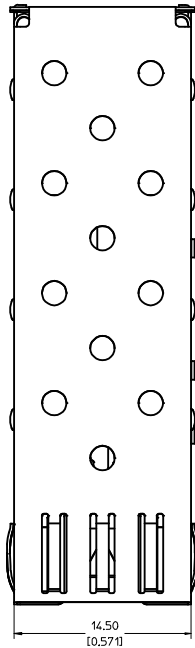
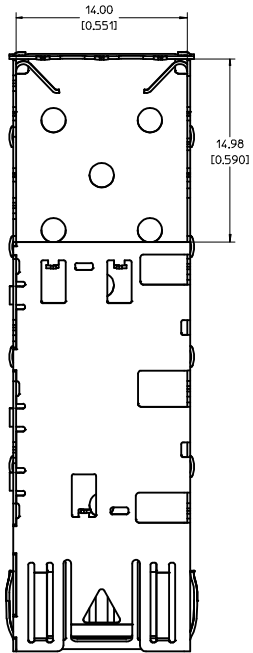
<b>UPDATED 3D MODELS</b> USY2008-0144 2007/09/28 CCX 2007/10/02 CHYK 2007/10/03 APPR:RMAHMOOD	QUALITY SYMBOLS ▽=0 ▽=0	GENERAL TOLERANCES (UNLESS SPECIFIED) <table border="1"> <thead> <tr> <th></th> <th>mm</th> <th>INCH</th> </tr> </thead> <tbody> <tr> <td>4 PLACES</td> <td>±---</td> <td>±---</td> </tr> <tr> <td>3 PLACES</td> <td>±---</td> <td>±.005</td> </tr> <tr> <td>2 PLACES</td> <td>±0.13</td> <td>±.01</td> </tr> <tr> <td>1 PLACE</td> <td>±0.25</td> <td>±---</td> </tr> <tr> <td colspan="3">ANGULAR ± 1°</td> </tr> </tbody> </table>		mm	INCH	4 PLACES	±---	±---	3 PLACES	±---	±.005	2 PLACES	±0.13	±.01	1 PLACE	±0.25	±---	ANGULAR ± 1°			DIMENSION STYLE MM/IN	SCALE 5:1	DESIGN UNITS METRIC	THIRD ANGLE PROJECTION
		mm	INCH																					
	4 PLACES	±---	±---																					
	3 PLACES	±---	±.005																					
2 PLACES	±0.13	±.01																						
1 PLACE	±0.25	±---																						
ANGULAR ± 1°																								
DRAWN BY CCX 2006/10/30	CHECKED BY RMAHMOOD 2006/10/30	APPROVED BY RMAHMOOD 2006/10/30	MATERIAL NO. 747370016	DOCUMENT NO. SD-74737-016	TITLE SFP ONE PIECE CAGE PRESS-FIT (0,120 LEGS) FOR PCI	SHEET NO. 3 OF 4																		
DRAFT WHERE APPLICABLE MUST REMAIN WITHIN DIMENSIONS			THIS DRAWING CONTAINS INFORMATION THAT IS PROPRIETARY TO MOLEX INCORPORATED AND SHOULD NOT BE USED WITHOUT WRITTEN PERMISSION																					
MOLEX INCORPORATED																								

19 18 17 16 15 14 13 12 11 10 9 8 7 6 5 4 3 2 1

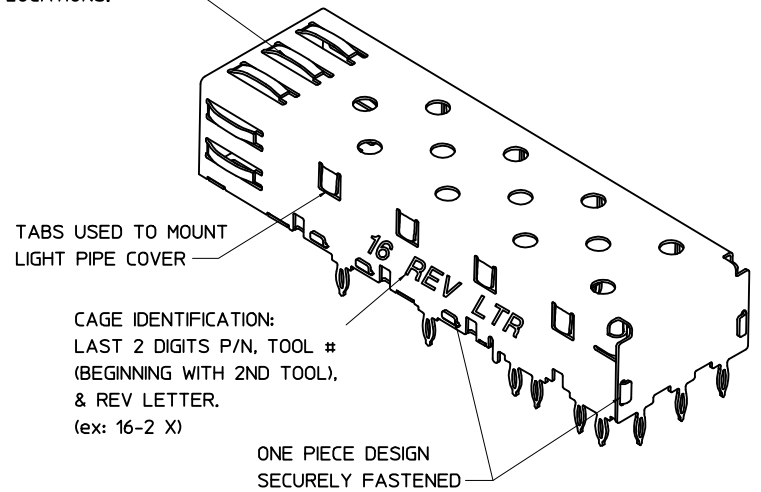
DATE	REV	CHANGES
2005/06/10	A	INITIAL RELEASE
2006/10/20	B	SEPARATED FROM MAIN DRAWING E-74737-0000, UPDATED VIEWS
2007/01/10	C	ADDED NOTE 5
2007/09/27	D	[1] ON SHT2 CHG'D DETAIL1 TO "KEEPOUT DETAIL" AND FRONT1 TO "PCB LAYOUT"; [2] ADDED REVISION SHEET; [3] ON SHT1 ROTATED BTM_VIEW 180 DEGREES. [4] ADDED *TOOL # (BEGINNING WITH 2ND TOOL)* TO CAGE REV NOTE ON SHT1.

UPDATED 3D MODELS USY2008-0144 DRWN:CCOX 2007/09/28 CHYK: 2007/10/02 APPR:RMAHMOOD 2007/10/03	QUALITY SYMBOLS ▽=0 ▽=0	GENERAL TOLERANCES (UNLESS SPECIFIED)		DIMENSION STYLE MM/IN	SCALE 1:1	DESIGN UNITS METRIC	THIRD ANGLE PROJECTION
		4 PLACES #--- #--- 3 PLACES #--- #.005 2 PLACES #0.13 #.01 1 PLACE #0.25 #--- ANGULAR ± 1°	mm INCH ± --- ± ---	DRAWN BY DATE CCOX 2006/10/30 CHECKED BY DATE RMAHMOOD 2006/10/30 APPROVED BY DATE RMAHMOOD 2006/10/30	TITLE SFP ONE PIECE CAGE PRESS-FIT (0,120 LEGS) FOR PCI	Molex MOLEX INCORPORATED	
DRAFT WHERE APPLICABLE MUST REMAIN WITHIN DIMENSIONS	MATERIAL NO. 747370016	DOCUMENT NO. SD-74737-016		SHEET NO. 4 OF 4			

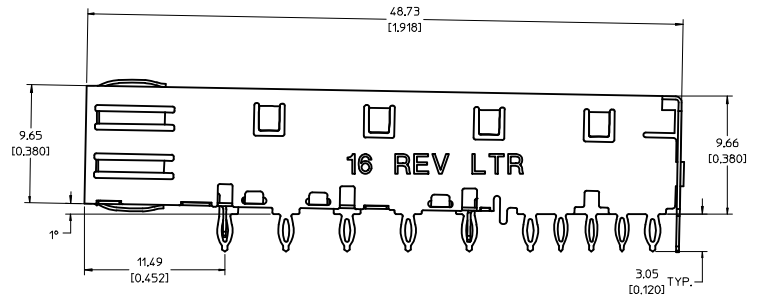




SPRING FINGER GASKET WITH TWO POINTS OF CONTACT. COMPLIES WITH (SFP) MSA BOARD AND BEZEL LOCATIONS.



CAGE IDENTIFICATION:  
LAST 2 DIGITS P/N, TOOL #  
(BEGINNING WITH 2ND TOOL),  
& REV LETTER.  
(ex: 16-2 X)



NOTES:

- PRESS FIT LEGS, 0.120 INCHES LONG. 1.57 [0.062] MINIMUM PCB THICKNESS.
- THIS CAGE IS FOR SINGLE SIDED USE ONLY.
- CAN BE USED WITH THE FOLLOWING LIGHT PIPE PART NUMBERS:

747260001 - LIGHT PIPE FROM BACK TO TOP  
(REFER TO DOCUMENT SD-74726-001)

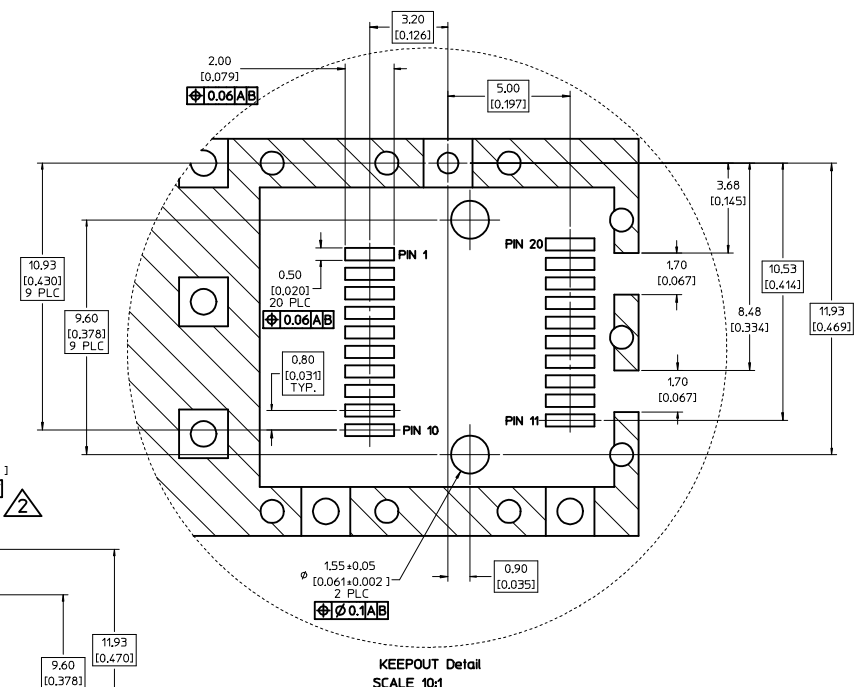
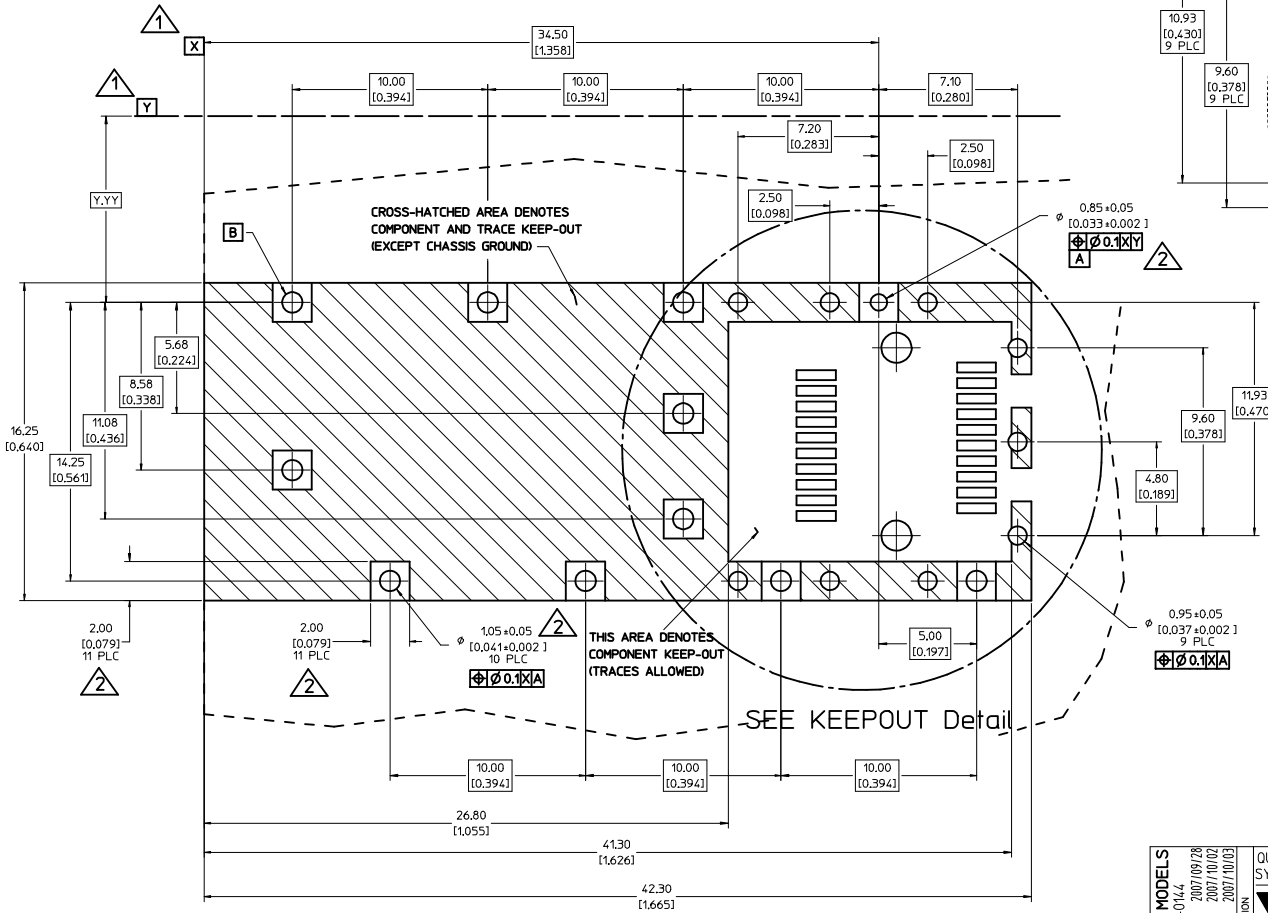
747260002 - LIGHT PIPE FROM SIDE TO TOP  
(REFER TO DOCUMENT SD-74726-002)

- MATERIAL: COPPER ALLOY  
PLATING: PRE-PLATED WITH NICKEL

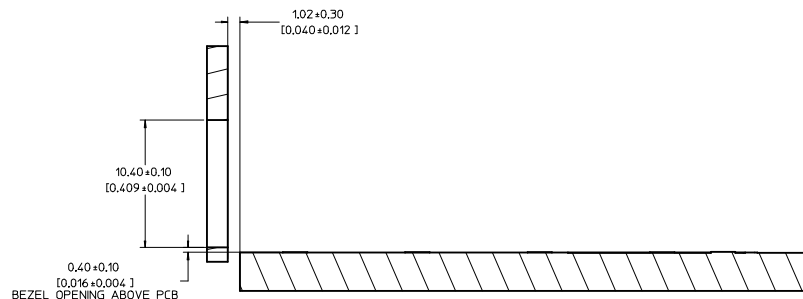
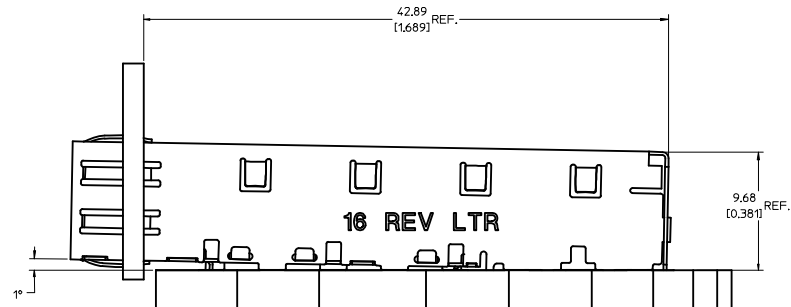
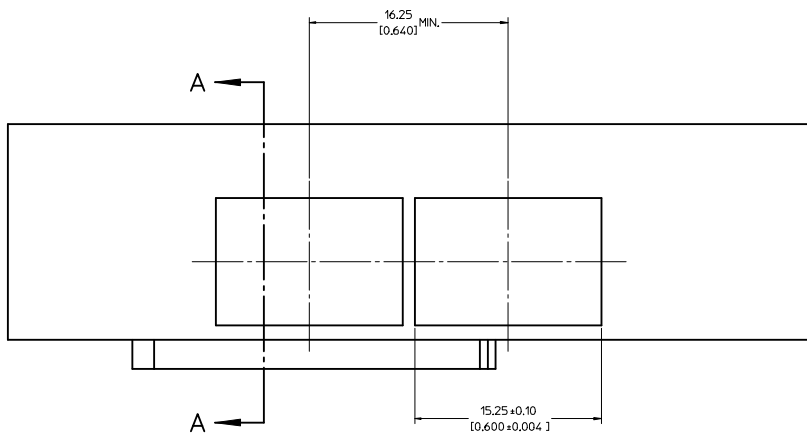
- THIS PART MEETS THE RESTRICTION OF HAZARDOUS SUBSTANCES IN ELECTRICAL AND ELECTRONIC EQUIPMENT (ROHS) DIRECTIVE (2002/95/EC).

UPDATED 3D MODELS USY 2008-0144 DRAWN BY: CCOX 2007/09/28 CHKD: CCOX 2007/10/02 APPR: RMAHMOOD 2007/10/03	QUALITY SYMBOLS ▽=0 ▽=0	GENERAL TOLERANCES (UNLESS SPECIFIED)		DIMENSION STYLE MM/IN	SCALE 5:1	DESIGN UNITS METRIC	THIRD ANGLE PROJECTION		
		4 PLACES ±--- ±---	3 PLACES ±--- ±.005	2 PLACES ±0.13 ±.01	1 PLACE ±0.25 ±---	ANGULAR ± 1°	DRAWN BY: CCOX 2006/10/30 CHECKED BY: RMAHMOOD 2006/10/30 APPROVED BY: RMAHMOOD 2006/10/30		
		DRAFT WHERE APPLICABLE MUST REMAIN WITHIN DIMENSIONS		MATERIAL NO. 747370016		DOCUMENT NO. SD-74737-016			
		THIS DRAWING CONTAINS INFORMATION THAT IS PROPRIETARY TO MOLEX INCORPORATED AND SHOULD NOT BE USED WITHOUT WRITTEN PERMISSION							SHEET NO. 1 OF 4

- 1 DATUM AND BASIC DIMENSIONS ESTABLISHED BY CUSTOMER.
- 2 PADS AND VIAS ARE CHASSIS GROUND.
- 3 HOLE LAYOUT SHOWN IS FOR SINGLE SIDED MOUNTING ONLY.
- 4 CONNECTOR PAD LAYOUT PER SFP MSA, WILL ACCOMMODATE MOLEX CONNECTOR SERIES 74441 OR EQUIVALENT.



<b>UPDATED 3D MODELS</b> USY 2006-0144 DRAWN: CCOX 2007/09/28 CHYD: 2007/10/02 APPR: RMAHMOOD 2007/10/03	QUALITY SYMBOLS	GENERAL TOLERANCES (UNLESS SPECIFIED)	DIMENSION STYLE	SCALE	DESIGN UNITS	THIRD ANGLE PROJECTION
	$\nabla=0$ $\nabla=0$	mm INCH 4 PLACES $\pm$ --- $\pm$ --- 3 PLACES $\pm$ --- $\pm$ .005 2 PLACES $\pm$ 0.13 $\pm$ .01 1 PLACE $\pm$ 0.25 $\pm$ --- ANGULAR $\pm$ 1°	MM/IN	8:1	METRIC	
	DRAFT WHERE APPLICABLE MUST REMAIN WITHIN DIMENSIONS	DRAWN BY DATE CCOX 2006/10/30 CHECKED BY DATE RMAHMOOD 2006/10/30 APPROVED BY DATE RMAHMOOD 2006/10/30	MATERIAL NO. <b>747370016</b>	DOCUMENT NO. <b>SD-74737-016</b>	<b>SFP ONE PIECE CAGE PRESS-FIT (0.120 LEGS) FOR PCI</b>	
			<b>MOLEX INCORPORATED</b>		SHEET NO. 2 OF 4	



SECTION A-A

UPDATED 3D MODELS USY2008-0144 2007/09/28 DRAWN: CCOX CHYK: 2007/10/02 APPR: RMAHMOOD 2007/10/03	QUALITY SYMBOLS	GENERAL TOLERANCES (UNLESS SPECIFIED)	DIMENSION STYLE	SCALE	DESIGN UNITS	THIRD ANGLE PROJECTION
	▽=0 ▽=0	mm INCH 4 PLACES ± --- ± --- 3 PLACES ± --- ± .005 2 PLACES ± 0.13 ± .01 1 PLACE ± 0.25 ± --- ANGULAR ± 1 °	MM/IN	5:1	METRIC	DRAWN BY DATE CCOX 2006/10/30 CHECKED BY DATE RMAHMOOD 2006/10/30 APPROVED BY DATE RMAHMOOD 2006/10/30
	DESCRIPTION	DRAFT WHERE APPLICABLE MUST REMAIN WITHIN DIMENSIONS	WATER NO.	DOCUMENT NO.		SHEET NO.
			747370016	SD-74737-016		3 OF 4

MOLEX INCORPORATED

THIS DRAWING CONTAINS INFORMATION THAT IS PROPRIETARY TO MOLEX INCORPORATED AND SHOULD NOT BE USED WITHOUT WRITTEN PERMISSION

DATE	REV	CHANGES
2005/06/10	A	INITIAL RELEASE
2006/10/20	B	SEPARATED FROM MAIN DRAWING E-74737-0000, UPDATED VIEWS
2007/01/10	C	ADDED NOTE 5
2007/09/27	D	[1] ON SHT2 CHG'D DETAIL1 TO "KEEPOUT DETAIL" AND FRONT1 TO "PCB LAYOUT"; [2] ADDED REVISION SHEET; [3] ON SHT1 ROTATED BTM_VIEW 180 DEGREES. [4] ADDED "TOOL # (BEGINNING WITH 2ND TOOL)" TO CAGE REV NOTE ON SHT1.

<b>UPDATED 3D MODELS</b> USY2008-0144 DRW:CCOX 2007/09/28 CHKD: 2007/10/02 APPR:RMAHMOOD 2007/10/03	QUALITY SYMBOLS ▽=0 ▽=0	GENERAL TOLERANCES (UNLESS SPECIFIED)		DIMENSION STYLE <b>MM/IN</b>	SCALE <b>1:1</b>	DESIGN UNITS <b>METRIC</b>	THIRD ANGLE PROJECTION																
		<table border="1"> <thead> <tr> <th></th> <th>mm</th> <th>INCH</th> </tr> </thead> <tbody> <tr> <td>4 PLACES</td> <td>± ---</td> <td>± ---</td> </tr> <tr> <td>3 PLACES</td> <td>± ---</td> <td>± .005</td> </tr> <tr> <td>2 PLACES</td> <td>± 0.13</td> <td>± .01</td> </tr> <tr> <td>1 PLACE</td> <td>± 0.25</td> <td>± ---</td> </tr> </tbody> </table>			mm	INCH	4 PLACES	± ---	± ---	3 PLACES	± ---	± .005	2 PLACES	± 0.13	± .01	1 PLACE	± 0.25	± ---	DRAWN BY DATE CCOX 2006/10/30		TITLE <b>SFP ONE PIECE CAGE PRESS-FIT (0,120 LEGS) FOR PCI</b>		
			mm	INCH																			
		4 PLACES	± ---	± ---																			
3 PLACES	± ---	± .005																					
2 PLACES	± 0.13	± .01																					
1 PLACE	± 0.25	± ---																					
DRAFT WHERE APPLICABLE MUST REMAIN WITHIN DIMENSIONS		APPROVED BY DATE RMAHMOOD 2006/10/30		MATERIAL NO. <b>747370016</b>																			
SHEET NO. 4 OF 4		DOCUMENT NO. <b>SD-74737-016</b>																					