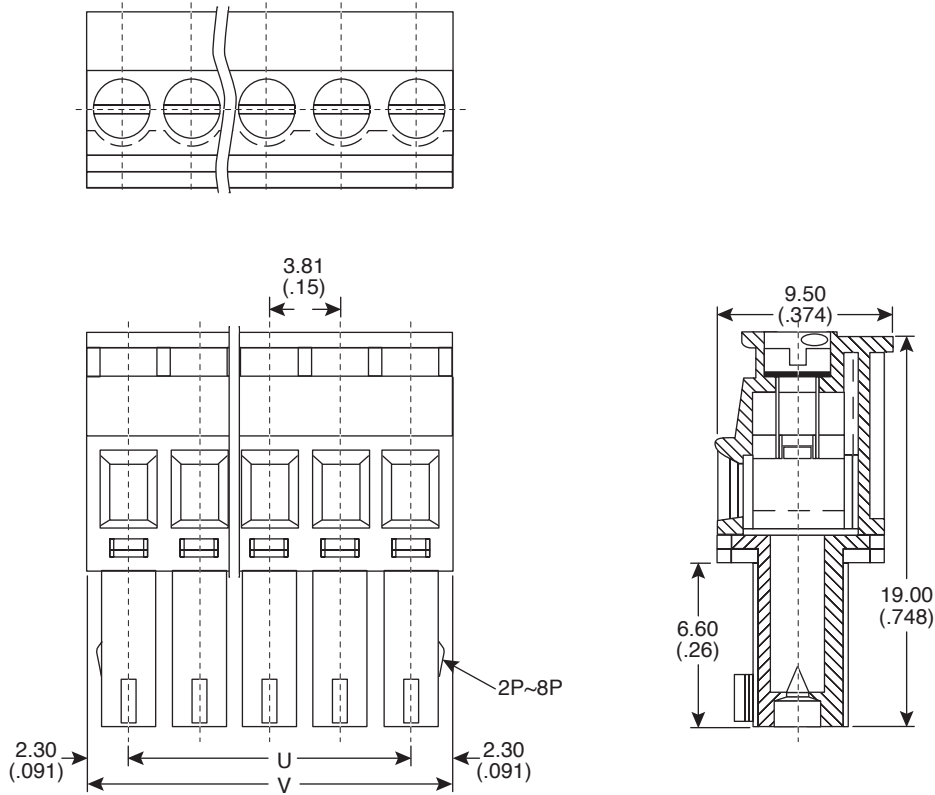


Terminal Block Plugs



158-P02EC381RP-E, 158-P03EC381RP-E, 158-P04EC381RP-E, 158-P05EC381RP-E,
158-P06EC381RP-E, 158-P07EC381RP-E, 158-P08EC381RP-E, 158-P09EC381RP-E,
158-P10EC381RP-E, 158-P11EC381RP-E, 158-P12EC381RP-E

Terminal Block Plugs



Dimensions: mm (in.)

P	02P	03P	04P	05P	06P	07P	08P	09P	10P	11P	12P
U mm	3.81	7.52	11.43	15.24	19.05	22.86	28.67	30.48	34.29	38.10	41.91
V mm	8.41	12.22	16.03	19.84	23.85	27.48	31.27	35.08	38.89	42.70	48.51

ELECTRICAL SPECIFICATIONS	
Rating:	300V 8A
Pitch:	3.81 mm
Insulation withstands voltage:	AC 1000V/Min
Insulation resistance:	1000MΩ or more at DC500V
Temperature range:	-40°C~ +120°C
Electric wire:	22 ~ 16 AWG

MATERIAL SPECIFICATIONS	
Base Housing:	PBT, Green
Clamp:	Bronze
Wire Cage:	Steel, Ni Plated
Screw:	Steel, M2/Zn Plated
Top Housing:	PBT, Green
RoHS Compliant	

158-P02EC381RP-E, 158-P03EC381RP-E, 158-P04EC381RP-E, 158-P05EC381RP-E,
158-P06EC381RP-E, 158-P07EC381RP-E, 158-P08EC381RP-E, 158-P09EC381RP-E,
158-P10EC381RP-E, 158-P11EC381RP-E, 158-P12EC381RP-E

Date Last Revised: 03/08/07

Available from Mouser Electronics
1-800-346-6873 / www.mouser.com

KC-301121

Specifications are subject to change without notice. No liability or warranty implied by this information. Environmental compliance based on producer documentation.

Mouser Electronics

Authorized Distributor

Click to View Pricing, Inventory, Delivery & Lifecycle Information:

[Kobiconn:](#)

[158-P05EC381RP-E](#) [158-P04EC381RP-E](#) [158-P10EC381RP-E](#) [158-P09EC381RP-E](#) [158-P02EC381RP-E](#) [158-P06EC381RP-E](#) [158-P11EC381RP-E](#) [158-P03EC381RP-E](#) [158-P07EC381RP-E](#) [158-P08EC381RP-E](#)