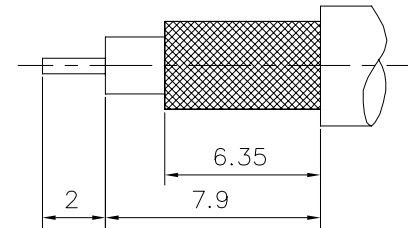
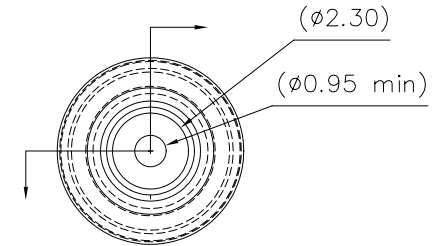
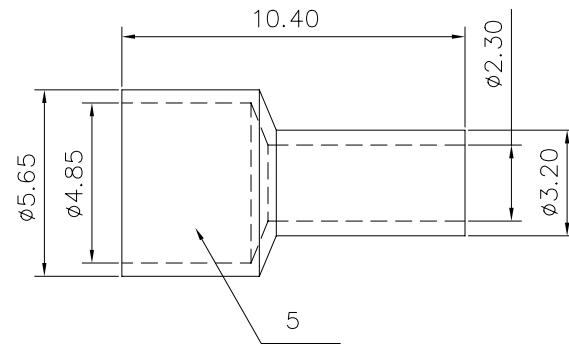
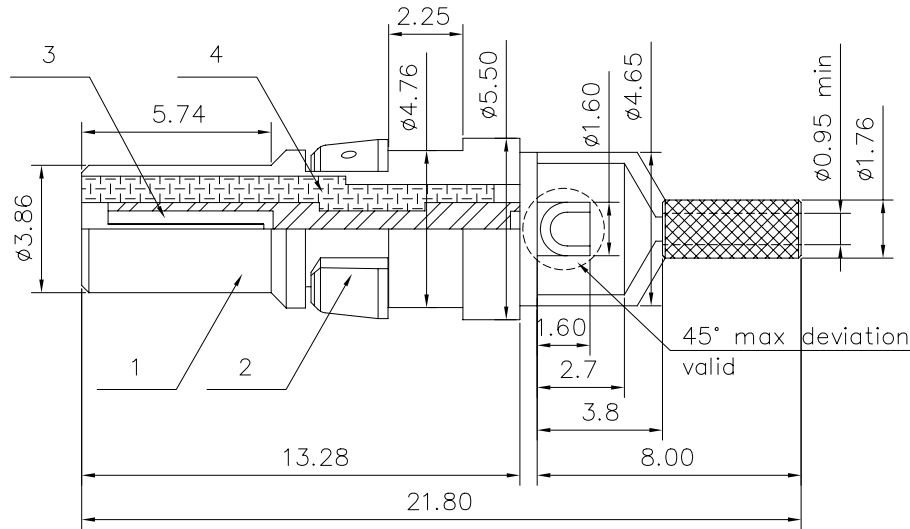


This document is the property of Amphenol Corporation and is delivered on the express condition that it is not to be disclosed, reproduced or used, in whole or in part, for manufacture or sale by anyone other than Amphenol Corporation without its prior consent, & that no right is granted to disclose or to use any information in this document.

REVISIONS

SYM	ECN	DESCRIPTION	DATE	APPROVED
1			10/20/08	



Trim cable

MECHANICAL

1. Materials: refer to the table
2. Finish: refer to the table
3. Center contact:

Insertion force: 340g max with $\phi 1.04$ plug
Withdrawal force: 14g min with $\phi 0.99$ plug

ELECTRICAL :

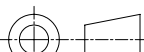
Impedance: 50 Ohms Nominal
Frequency Range: 0 to 2.0 GHz
Insulation Resistance: 5000 Megaohms Minimum
Contact Resistance: (Milliohms maximum)
Center Contact: 5.0
Outer Contact: 3.0
Voltage Standing Wave Ratio: 0 to 2.0 GHz

ENVIRONMENTAL

Operating Temperature range : -55°C up to $+125^{\circ}\text{C}$
Vibration: MIL-STD-202, Method 204, Test Condition D
Shock: MIL-STD-202, Method 213, Test Condition I
Corrosion Resistance: MIL-STD-202, Method 101, Test Condition B



5	ferrule	brass, 4u" min. gold over 50u" min. nickel
4	insulator	PTFE, Color white
3	center contact	phosphor bronze, 30u" min. gold over 50u" min. nickel
2	ring	thermoplastic, Color black
1	outer contact	brass, 8u" min. gold over 50u" min. nickel
Sequence	Material	Remark

UNLESS OTHERWISE SPECIFIED		APPROVAL		DATE	Amphenol®	
TOLERANCES		DRAWN	Mary.ma	10/20/08		
U.S.		CHECKED	lik.wang	10/20/08		
METRIC		CHECKED				
.X	+/-	/	0.15		TITLE Straight shielded contacts Crimp ferrule	
.XX	+/-		0.10			
.XXX	+/-		0.05			
FRACTIONS	+/-					
ANGLES	+/-		2"		SIZE DRAWING NO. REV. A4 C L17DM53740 1	
FOR MATERIALS AND FINISHES		DRAWING FILE :				
SEE NOTES		ANGLE OF PROJECTION				
REMOVE SHARP EDGES						
DIMENSIONS						
U.S. INCHES						
METRIC	MM					

Mouser Electronics

Authorized Distributor

Click to View Pricing, Inventory, Delivery & Lifecycle Information:

[Amphenol:](#)

[L17DM53740](#)