

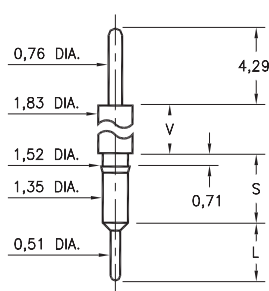
# MALE PCB PINS

## PRINTED CIRCUIT PINS

### 3400 ⇨ 3402/3405/3410

34XX-0-00-XX-00-00-03-0

Press-fit in 1,45 mounting hole

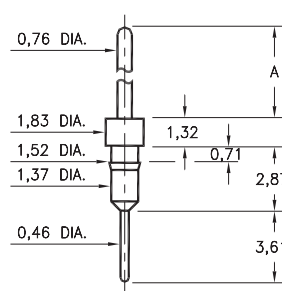


Basic Part Number	Shoulder Height V	Length S	Length L
3402-0	1,32	3,51	2,92
3401-0	2,54	3,45	2,92
3405-0	4,29	3,71	2,92
3400-0	11,71	3,68	2,92
3410-0	23,72	3,45	3,15

### 3411

3411-X-00-XX-00-00-03-0

Press-fit in 1,45 mounting hole

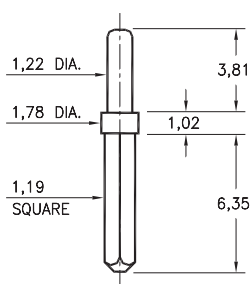


Basic Part Number	Pin Length A
3411-0	10,59
3411-1	5,51

### 0600

0600-0-05-XX-00-00-01-0

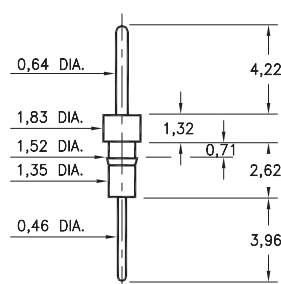
Solder mount 1,32 mounting hole



### 0290

0290-0-00-XX-00-00-03-0

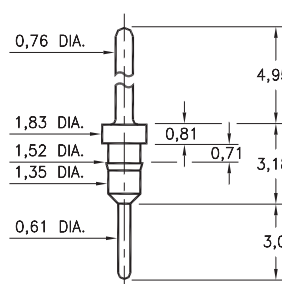
Press-fit in 1,45 mounting hole



### 7007

7007-0-00-XX-00-00-03-0

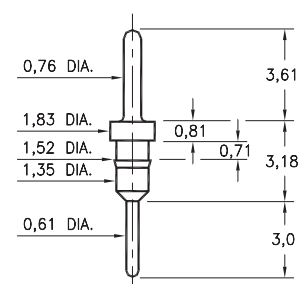
Press-fit in 1,45 mounting hole



### 5016

5016-0-00-XX-00-00-03-0

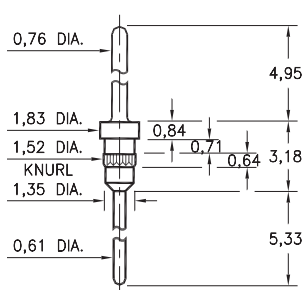
Press-fit in 1,45 mounting hole



### 5005

5005-0-00-XX-00-00-03-0

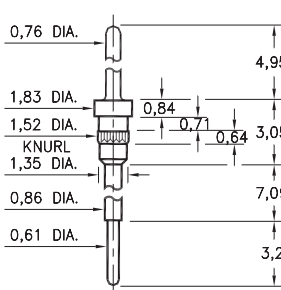
Press-fit in 1,45 mounting hole



### 5107

5107-0-00-XX-00-00-03-0

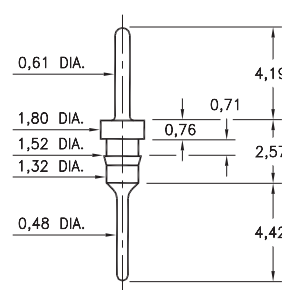
Press-fit in 1,45 mounting hole



### 8919

8919-0-00-XX-00-00-03-0

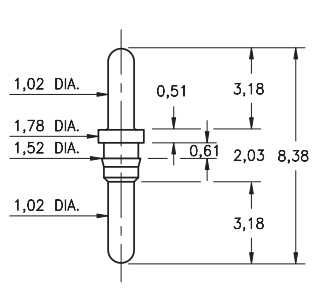
Press-fit in 1,45 mounting hole



### 3077

3077-0-00-XX-00-00-03-0

Press-fit in 1,45 mounting hole



#### SPECIFICATIONS:

**Pin Material:** Brass Alloy 360, 1/2 Hard  
(Except where noted)

**Dimensions:** Millimeters

**Tolerances On:** Lengths: ± 0,13  
Diameters: ± 0,051  
Angles: ± 2°



ORDER CODE: XXXX - X - 0X - XX - 00 - 00 - XX - 0

BASIC PART #

SPECIFY PIN FINISH:

- 01 5,08µm TIN/LEAD OVER NICKEL
- ◆ 80 5,08µm TIN OVER NICKEL (RoHS)
- ◆ 15 0,25µm GOLD OVER NICKEL (RoHS)
- ◆ 21 0,51µm GOLD OVER NICKEL (RoHS)
- ◆ 34 1,27µm GOLD OVER NICKEL (RoHS)



# Mouser Electronics

Authorized Distributor

Click to View Pricing, Inventory, Delivery & Lifecycle Information:

[Mill-Max:](#)

[5016-0-00-80-00-00-03-0](#) [0600-0-05-15-00-00-01-0](#)