

Sensor/actuator cable - SAC-3P-M12MS/1,5-PUR/A-1L-S VW - 1694004

Please be informed that the data shown in this PDF Document is generated from our Online Catalog. Please find the complete data in the user's documentation. Our General Terms of Use for Downloads are valid (<http://phoenixcontact.com/download>)




Sensor/actuator cable, 3-position, PUR halogen-free, irradiated, orange RAL 2003, Plug straight M12, A-coded, on Valve connector A, with 1 LED, connected with Z diode, cable length: 1.5 m

The figure shows the standard article with a black conductor

RoHS

Key Commercial Data

Packing unit	5 pc
GTIN	 4 017918 481667
GTIN	4017918481667
Sales Key	02

Technical data

Dimensions

Length of cable	1.5 m
-----------------	-------

Ambient conditions

Ambient temperature (operation)	-25 °C ... 90 °C (Plug / socket)
---------------------------------	----------------------------------

General

Rated current at 40°C	4 A
Rated voltage	24 V AC
	24 V DC
Number of positions	3
Coding	A - standard
Status display	1 LED
Insertion/withdrawal cycles	≥ 100

Material

Contact material	CuSn
Contact surface material	Ni/Au

Sensor/actuator cable - SAC-3P-M12MS/1,5-PUR/A-1L-S VW - 1694004

Technical data

Material

Contact carrier material	TPU GF
Material of grip body	TPU, hardly inflammable, self-extinguishing
Valve plug contact material	CuSn
Valve plug contact surface material	Ag
Valve plug contact insert material	PBT
Material housing valve plug	PBT
Sealing material	TPU (Flat gasket valve plug)

Cable

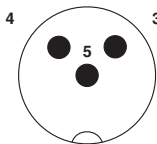
Cable type	PUR irradiated halogen-free orange
Conductor cross section	0.5 mm²
AWG signal line	20
Wire colors	Color-coded DIN 47100
External sheath, color	orange RAL 2003
External cable diameter	5.70 mm
Outer sheath, material	PUR

Environmental Product Compliance

China RoHS	Environmentally Friendly Use Period = 50
	For details about hazardous substances go to tab “Downloads”, Category “Manufacturer’s declaration”

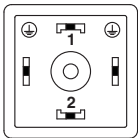
Drawings

Schematic diagram



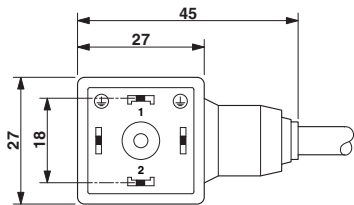
Pin assignment M12 plug, 3-pos., A-coded, view male side

Schematic diagram



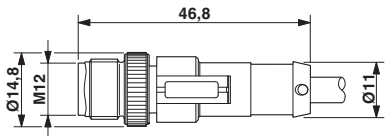
Pin assignment, valve plug

Dimensional drawing



Valve connector, type A

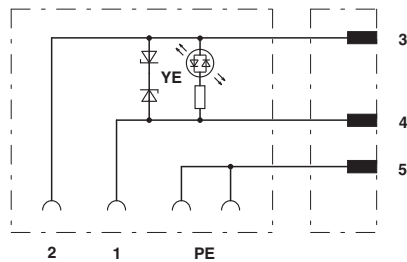
Dimensional drawing



Plug, M12 x 1, straight, shielded

Sensor/actuator cable - SAC-3P-M12MS/1,5-PUR/A-1L-S VW - 1694004

Circuit diagram



Contact assignment

Phoenix Contact 2018 © - all rights reserved
<http://www.phoenixcontact.com>

PHOENIX CONTACT GmbH & Co. KG
Flachsmarktstr. 8
32825 Blomberg
Germany
Tel. +49 5235 300
Fax +49 5235 3 41200
<http://www.phoenixcontact.com>

Mouser Electronics

Authorized Distributor

Click to View Pricing, Inventory, Delivery & Lifecycle Information:

Phoenix Contact:

1694004