

4

3

2

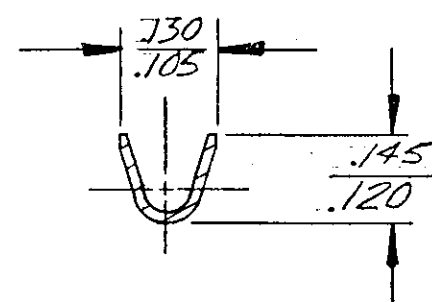
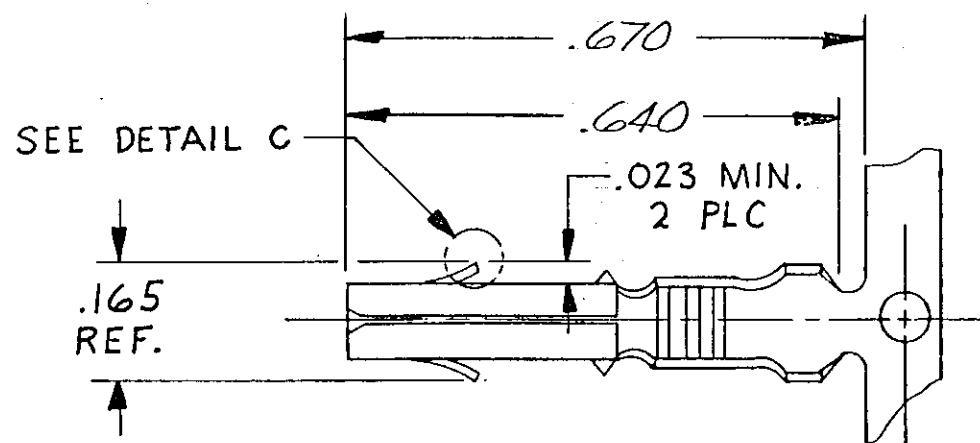
1

DRAWING MADE IN THIRD ANGLE PROJECTION

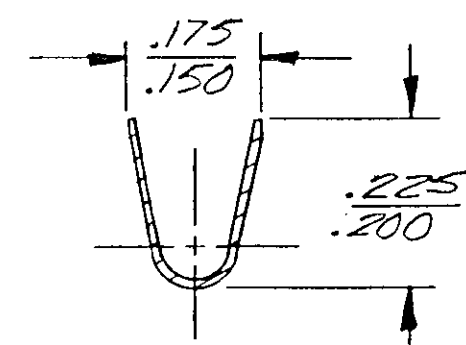
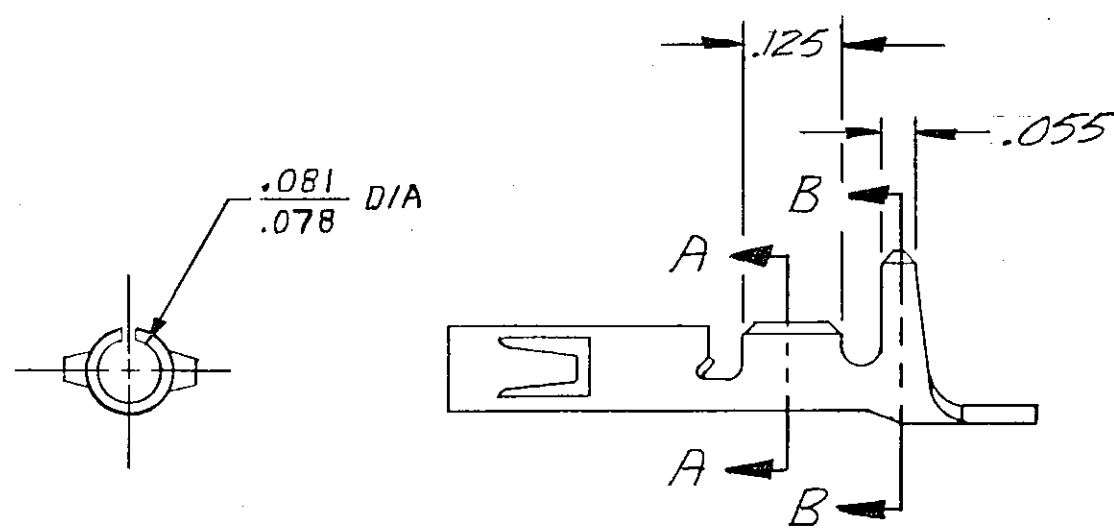
LOC CM DIST 53

© COPYRIGHT 1973 BY AMP INCORPORATED, HARRISBURG, PA.  
ALL INTERNATIONAL RIGHTS RESERVED, AMP INCORPORATED PRODUCTS  
COVERED BY U. S. AND FOREIGN PATENTS AND/OR PATENTS PENDING.

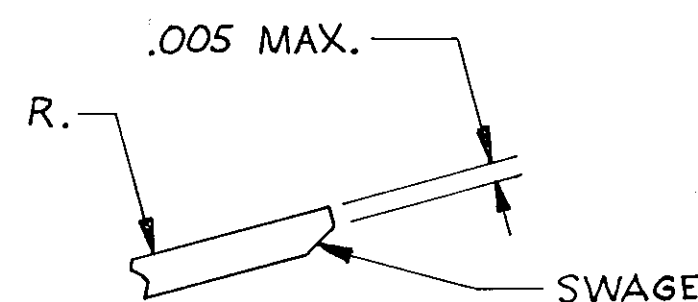
REVISIONS						
P	F	ZONE	LTR	DESCRIPTION	DATE	APPROVED
✓	✓		C	REDRAWN W/O CHANGE M-5090	5-278	JW/DH.
✓	✓		D	ADDED 350512-2, TT82-125	7/24/82	DAS/CH
✓	✓		D <sub>1</sub>	RESTORED	4/2/85	BK <sub>0</sub> / RS
			E	REV PER EC 0730-3607-91	1-5-94	RV / RS



SECT. A-A




SECT. B-B



DETAIL C

(2) .115 DIA MAX STACKED	(2) #18 OR (1) #18 & (1) #16	.012 PH BRZ	350512-2
		.012 BRASS	350512-1
INSULATION RANGE	WIRE RANGE	MATERIAL	PART NO

UNLESS OTHERWISE SPECIFIED DIMENSIONS ARE IN INCHES. TOLERANCES ON: DECIMALS ± .015 ANGLES ± 1°	CONTRACT NO	 AMP INCORPORATED Harrisburg, Pa.		
	DR <i>John Whitman</i> 5-278			
	CHK <i>J.S. Heide</i> 11/16/78	NAME		
	MATERIAL SEE TABLE	APPR <i>A.E. TRAVIS</i> 11/17	SOCKET, MATE-N-LOK, DUAL LANCE	
FINISH PRE-TIN	DSGN APPD	SIZE B	CODE IDENT NO 00779	DRAWING NO 350512
	OTHER APPD	SCALE X	SHEET 11	

# Mouser Electronics

Authorized Distributor

Click to View Pricing, Inventory, Delivery & Lifecycle Information:

[TE Connectivity:](#)

[350512-1](#) [350512-1 \(Mouser Reel\)](#) [350512-1 \(Cut Strip\)](#)