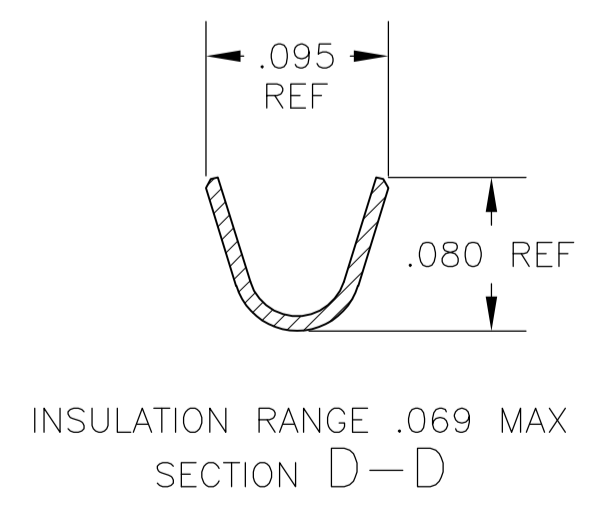
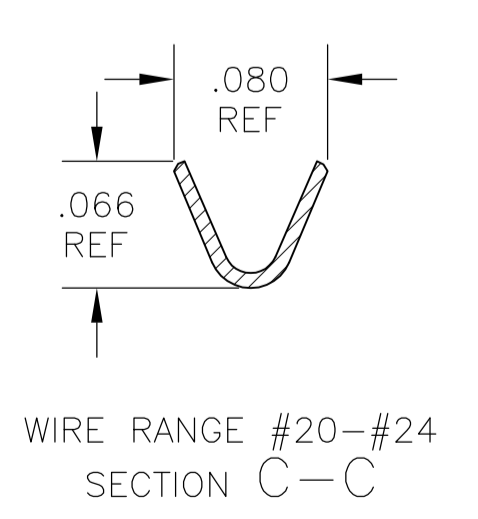
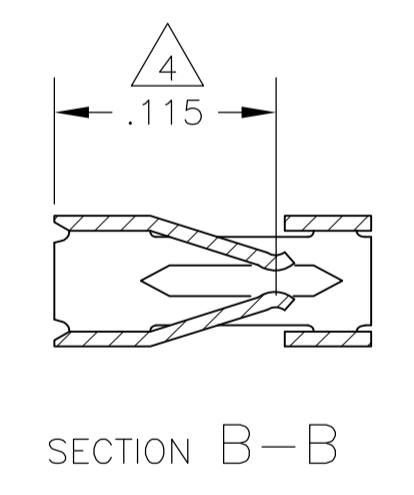
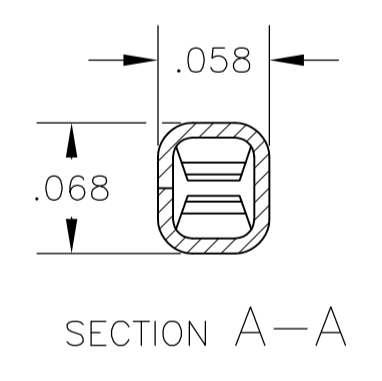
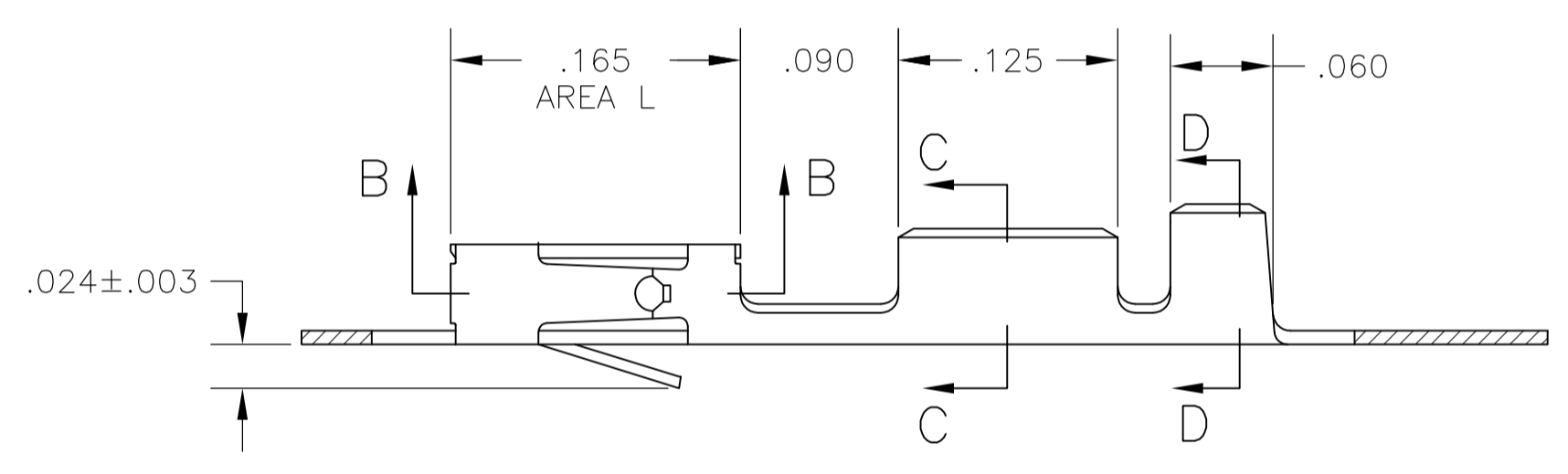


- 1 PLATING IS NOT REQUIRED IN THIS AREA.
- 2 CUT-OUTS ON BOX AT MANUFACTURER'S OPTION.
- 3 .006 MAX LOOSE PIECE CUT-OFF.
- 4 POINT OF MEASUREMENT FOR PLATING THICKNESS(INSIDE BEAMS).
- 5 .000015 GOLD IN CONTACT AREA, GOLD FLASH ON REMAINDER OF TERMINAL, ALL OVER .000050 NICKEL.
- 6 .000030 GOLD OVER .000050 NICKEL.
- 7 .000030 GOLD IN CONTACT AREA, GOLD FLASH ON REMAINDER OF TERMINAL, ALL OVER .000050 NICKEL.
- 8 PREPLATED: .000078-.000158 BRIGHT TIN.
- 9 .000030 GOLD IN CONTACT AREA, GOLD FLASH IN AREA L, ALL OVER .000050 NICKEL.
- 10 .000050 GOLD IN CONTACT AREA, GOLD FLASH ON REMAINDER OF TERMINAL, ALL OVER .000050 NICKEL.
- 11 SHEARED EDGES PERMITTED TO BE UNPLATED.
- 12 OBSOLETE PART NUMBER.
- 13 OBSOLETE PARTS: OBSOLETE CIS STREAMLINING PER D.RENAUD/D.SINISI.



OBSOLETE	12	-6	1-	12	-7	10	1-86492	-8
	12	-5	1-	12	-4	9	1-	-3
	87046	-4		12	-8	8		-9
		-3		12	-5	7		-6
		-2		12	-3	6		-4
	87046	-1		12	-1	5	86492	-2
	LOOSE PIECE PART NUMBER		STANDARD APPLICATOR PART NUMBER		FINISH		MINI APPLICATOR PART NUMBER	

THIS DRAWING IS A CONTROLLED DOCUMENT.		DIN L A MAYER 20MAY85		TE Connectivity	
DIMENSIONS: INCHES		TOLERANCES UNLESS OTHERWISE SPECIFIED:			
0 PLC ± - 1 PLC ± - 2 PLC ± - 3 PLC ± .005 4 PLC ± - ANGLES ± -		CHK R J DAVIS 07JUN85 APVO C LINDGREN 14JUN85		NAME CONTACT, MOD IV 1/2, RECEPTACLE, CRIMP SNAP-IN	
MATERIAL CU-NI-SI		FINISH -		SIZE A1 CAGE CODE 00779 DRAWING NO C=86492	
CUSTOMER DRAWING		SCALE 10:1		SHEET 1 OF 1 REV L	