

D

C

B

A

D

C

B

A

		DWG NO.	C-VP773-10001		SH	REV	A
REV	SCR NO.	DESCRIPTION			BY	DATE	APPROVED
-	55192	NEW RELEASE			T.D.	01/15/10	H.COOK
A	55290	UPDATED TO REFLECT NEW MATING PART NUMBERS, MADE ALL DIMENSIONS REFERENCE			B.B.	04/28/10	H.COOK

NOTES:

1. REFER TO FOLLOWING TECH BULLETINS FOR VIPER PRODUCT SPECIFICATIONS:
TB-2094: VIPER GENERAL PRODUCT SPECIFICATION
TB-2095: VIPER CONNECTOR QUALIFICATION PLAN SUMMARY
TB-2096: VIPER SIGNAL INTEGRITY CHARACTERIZATION REPORT
TB-2097: VIPER SIGNAL TRACE ROUTING GUIDELINES BACKPLANE AND DAUGHTERCARD
TB-2098: INSTALLATION OF RIGHT-ANGLE PRESSFIT VIPER DAUGHTERCARD CONNECTORS
TB-2099: VIPER CONNECTOR REPAIR PROCEDURES
TB-2100: VIPER BACKPLANE CONNECTOR PRESS-FIT INSTALLATION PROCESS
2. PART MARKING AS FOLLOWS:
FONT: 1.52 [.06"] HIGH HELVETICA
LOGO HEIGHT 3.81 [.15"] PLACED APPROXIMATELY WHERE SHOWN
LINE 1: "AMPHENOL" AND DATECODE (YYWW)
LINE 2: MODULE PART NUMBER VP773-10001
3. ALL GROUNDS WITHIN EACH SIGNAL WAFER ARE BUSSED TOGETHER.
4. DUE TO DAUGHTERCARD THICKNESS VARIATIONS, M3 X 0.5 DAUGHTERCARD MOUNTING HARDWARE NOT INCLUDED. SCREW MUST NOT PROTRUDE MORE THAN 2.50 MILLIMETERS [.098"] BEYOND MOUNTING SURFACE OF DAUGHTERCARD TO AVOID GUIDE PIN INTERFERENCE.
5. THESE HOLES ARE REQUIRED TO SUPPORT VITA 46 PRODUCT SPECIFICATION AND ARE NOT REQUIRED FOR VIPER PRODUCT LINE TO BE INSTALLED.
6. AFTER KEYING AND/OR REPAIR, LOCTITE 222-MS (P/N 22231) THREAD SEALER RECOMMENDED FOR HARDWARE RETENTION.
7. KEYING TO BE SPECIFIED BY CUSTOMER WHEN ORDERING. IF NO KEYING SPECIFIED KEYS ARE BAGGED AND SHIPPED UNASSEMBLED WITH CONNECTOR.
8. Ø6.00 GROUND PAD ON BOTH SIDES OF THE BOARD.
9. MATES WITH VJ773-10001.

DAUGHTER CARD PARTS LIST				
ITEM	PART NUMBER	DESCRIPTION	MATERIAL/PLATING	QTY
1	746-2023-000	POWER WAFER	INSULATOR: LCP UL94 V0 PER MIL-M-24519 CONTACTS: OLIN C7025 TM03 PLATING: 50µ IN. GOLD OVER 150µ IN. NICKEL TIN-LEAD PLATING ON COMPLIANTS	3
2	746-2025-000	ODD DIFFERENTIAL WAFER	INSULATOR: LCP UL94 V0 PER MIL-M-24519 CONTACTS: OLIN C7025 TM03 PLATING: 50µ IN. GOLD OVER 150µ IN. NICKEL TIN-LEAD PLATING ON COMPLIANTS	17
3	746-2026-000	EVEN DIFFERENTIAL WAFER	INSULATOR: LCP UL94 V0 PER MIL-M-24519 CONTACTS: OLIN C7025 TM03 PLATING: 50µ IN. GOLD OVER 150µ IN. NICKEL TIN-LEAD PLATING ON COMPLIANTS	17
4	746-2024-000	SINGLE ENDED WAFER	INSULATOR: LCP UL94 V0 PER MIL-M-24519 CONTACTS: OLIN C7025 TM03 PLATING: 50µ IN. GOLD OVER 150µ IN. NICKEL TIN-LEAD PLATING ON COMPLIANTS	3
5	846-0070-000	3U DC CONNECTOR FRAME	STAINLESS STEEL, TYPE 303, PASSIVATED	1
6	800-7221-100	ESD GROUNDING SLEEVE	CDA172, BeCU; GOLD OVER NICKEL PLATING	1
7	800-7216-100	2-56 FLATHEAD 100" SCREW	300 SERIES STAINLESS STEEL	2
8	800-7291-100	1-64 FLATHEAD 82" SCREW	300 SERIES STAINLESS STEEL	2
9	846-0071-000	FRONT STIFFENER	STAINLESS STEEL, TYPE 301, 1/2 HARD FINISH: MIL 2B	1
10	846-0072-000	BACK STIFFENER	STAINLESS STEEL, TYPE 301, 1/2 HARD FINISH: MIL 2B	1
11	846-0104-000	DC KEY BUSHING	STAINLESS STEEL, TYPE 440, PASSIVATED	2
12	846-0073-000	GUIDANCE/KEYING END CAPS	STAINLESS STEEL, TYPE 440, PASSIVATED	2
13	800-7621-100	1-72 FLATHEAD X .25 L HEX DRIVE	STEEL BLACK OXIDE FINISH	2

7

PROENGINEER PART

VIPER-DC-VARIANT-A.ASSEM

PROENGINEER DRAWING

CVP77310001

TOLERANCES

0.0 ±.

0.00 ±.

0.000 ±.

DWN 01/04/10
T.DOUCET

CHK 01/14/10
R.CHIFFY

APVD 01/15/10
H.COOK

UNLESS OTHERWISE SPECIFIED
DIMENSIONS ARE IN MILLIMETERS

Amphenol Corporation

AMPHENOL BACKPLANE SYSTEMS
NASHUA, NH 03063

TITLE

VIPER VARIANT "A"
CONNECTOR, DAUGHTERCARD
3U CONFIGURATION

PART NO.

VP773-10001

DRAWING NO.

C-VP773-10001

SIZE

D

SCALE

2/1

SHEET

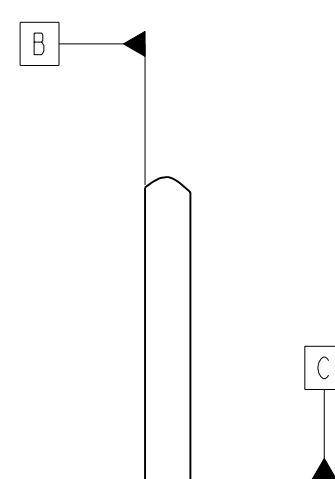
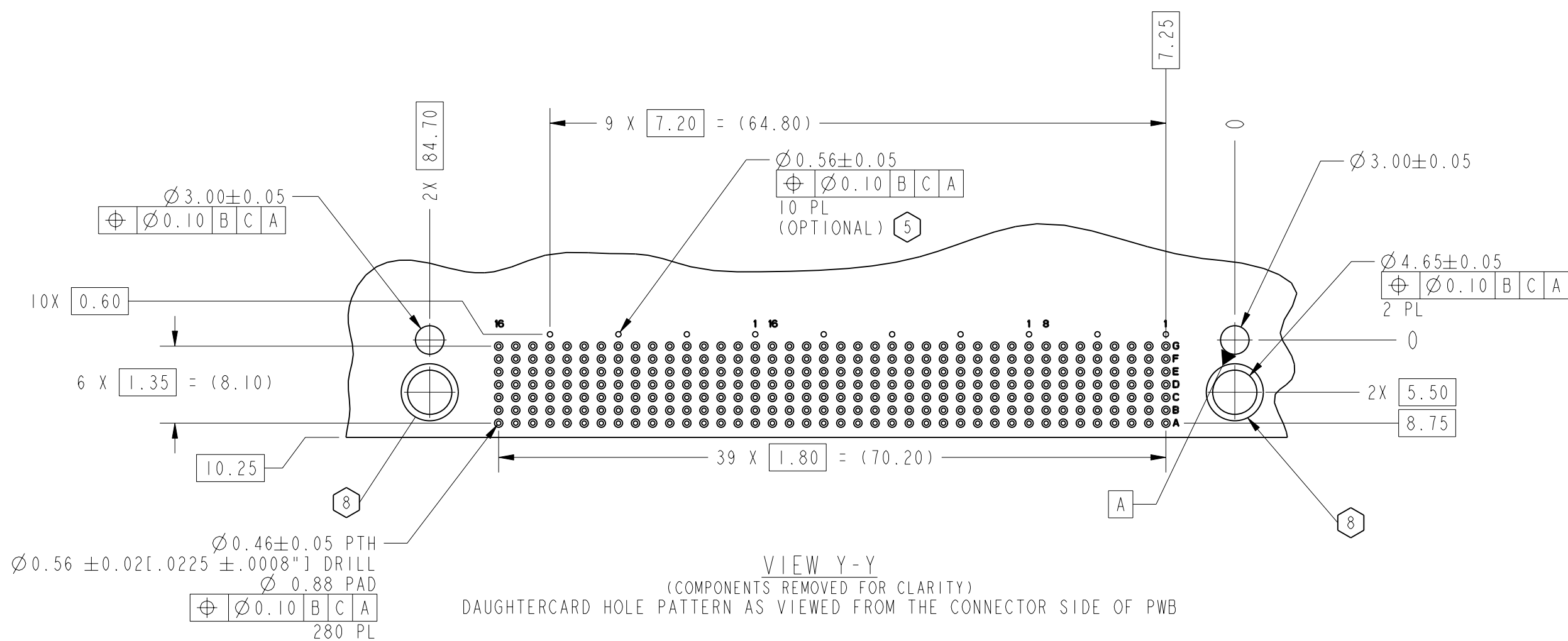
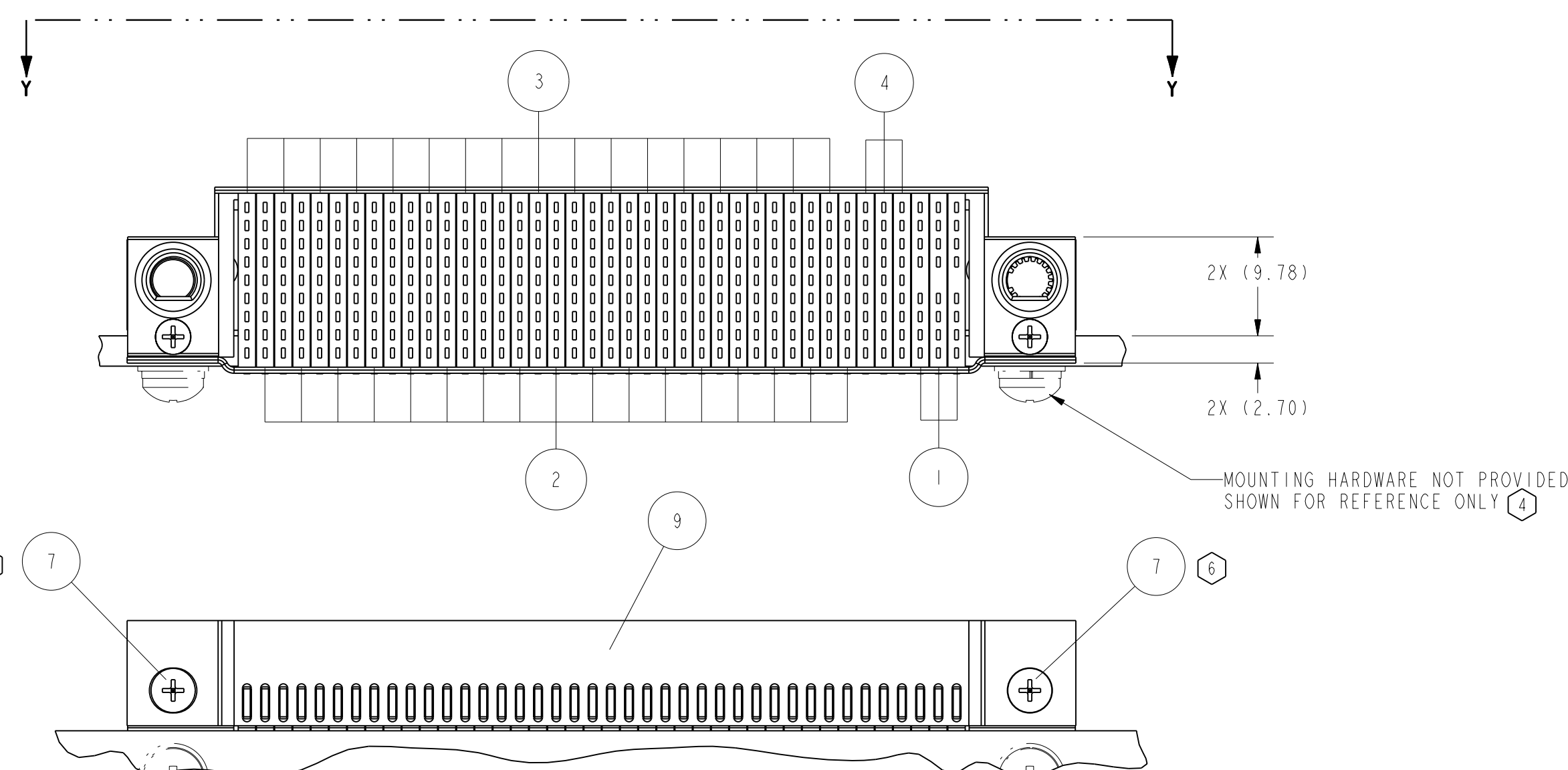
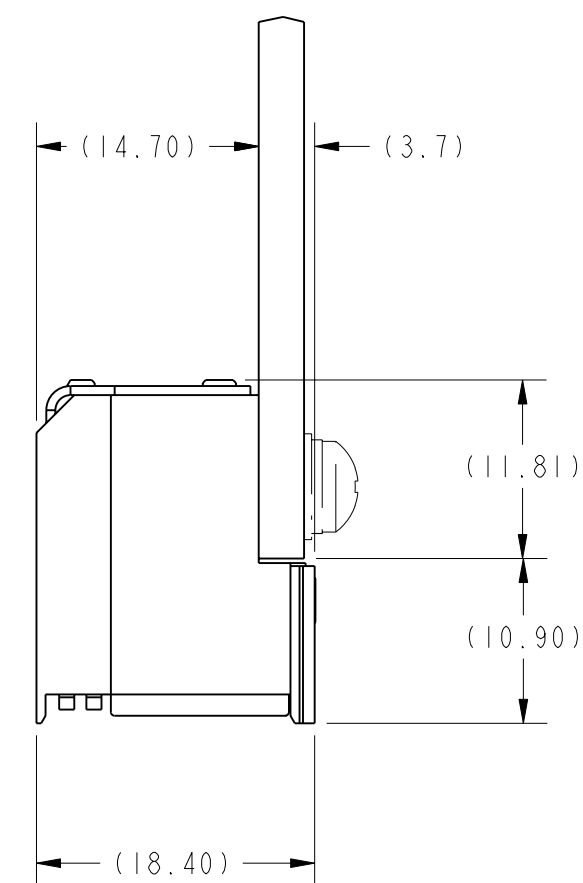
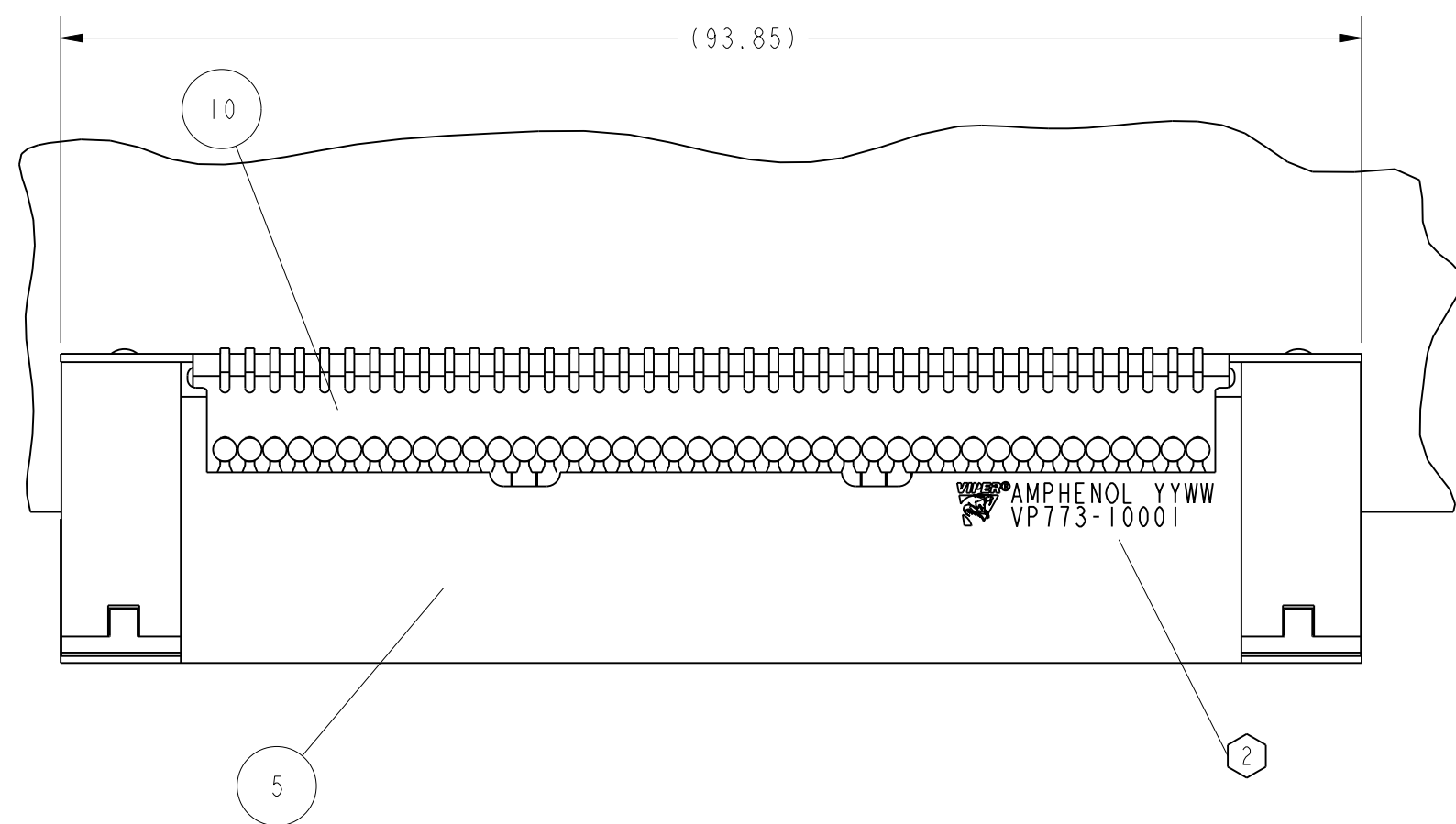
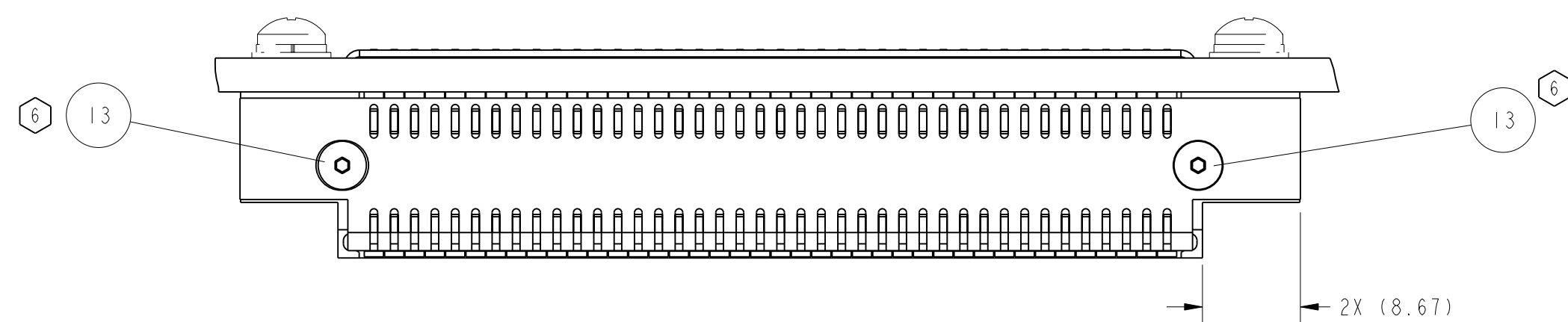
1 OF 4

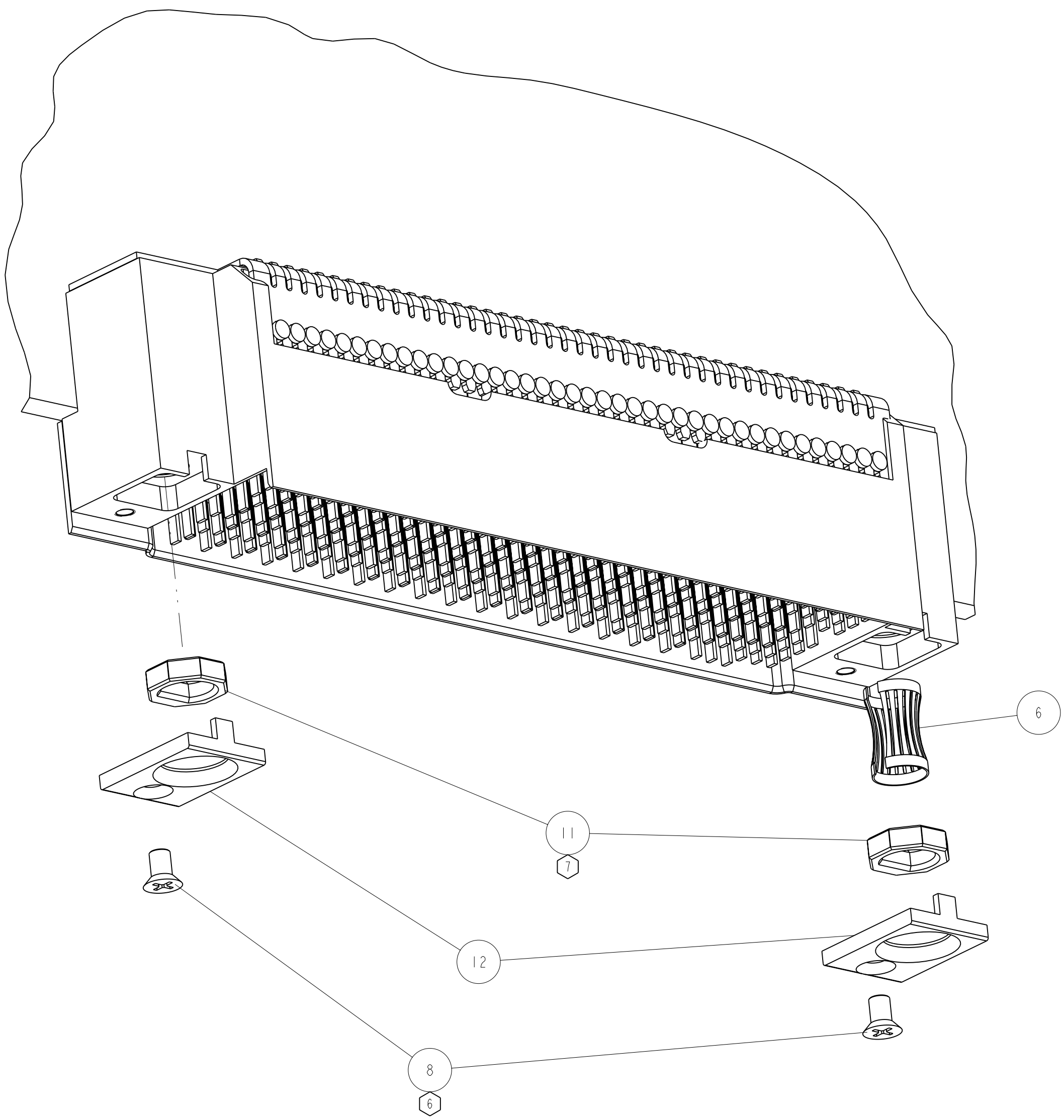
INTERPRET PER ASME Y14.5M

CODE IDENT 55KX1

CUSTOMER
USE
DRAWING

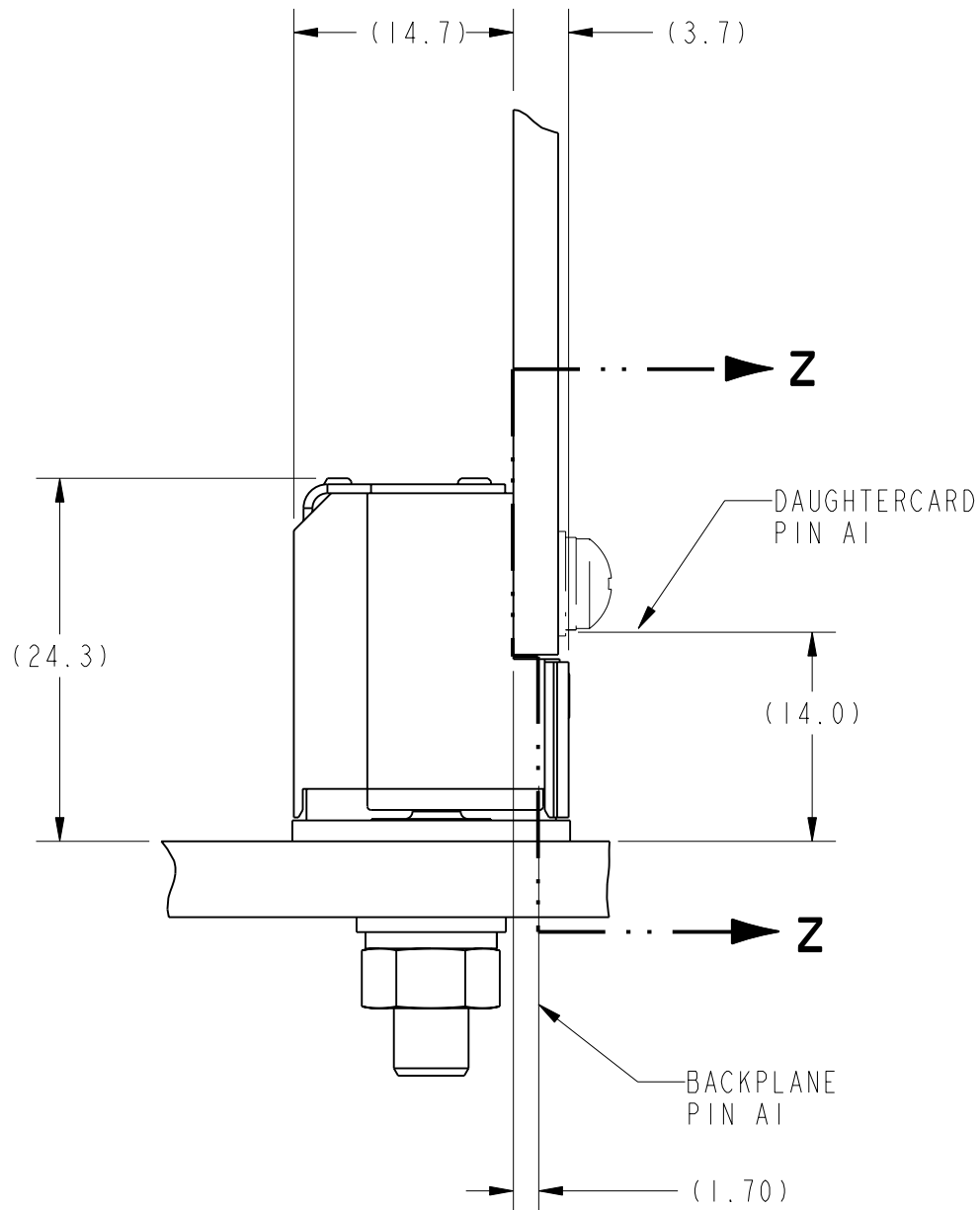
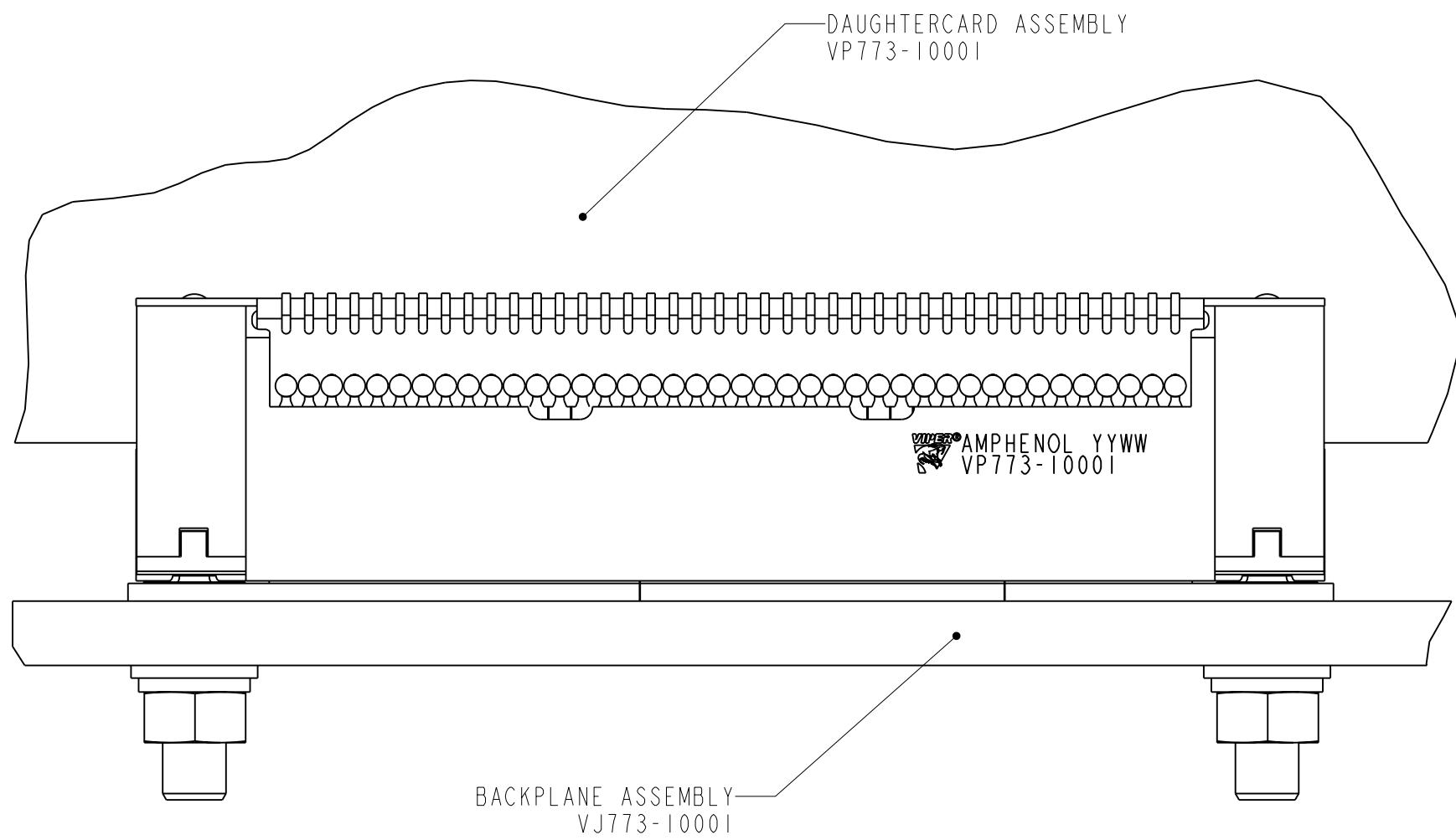
DWG NO. C-VP773-10001 SH 1 REV A



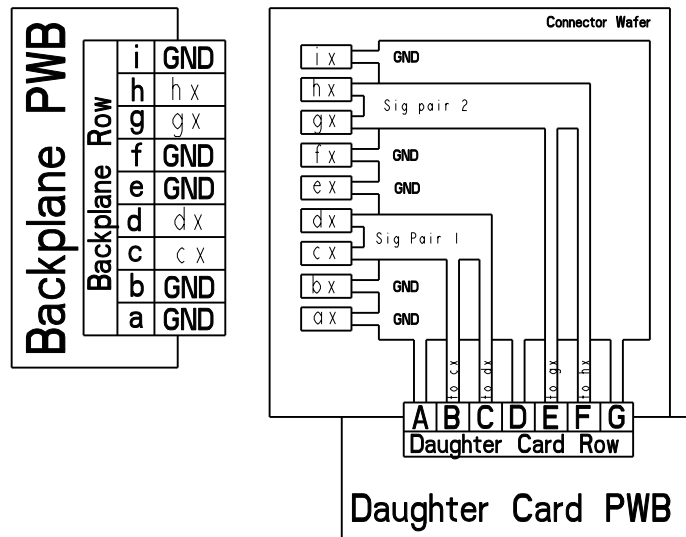


GUIDANCE / KEYING/ESD
HARDWARE EXPLODED VIEW
SCALE 3/1

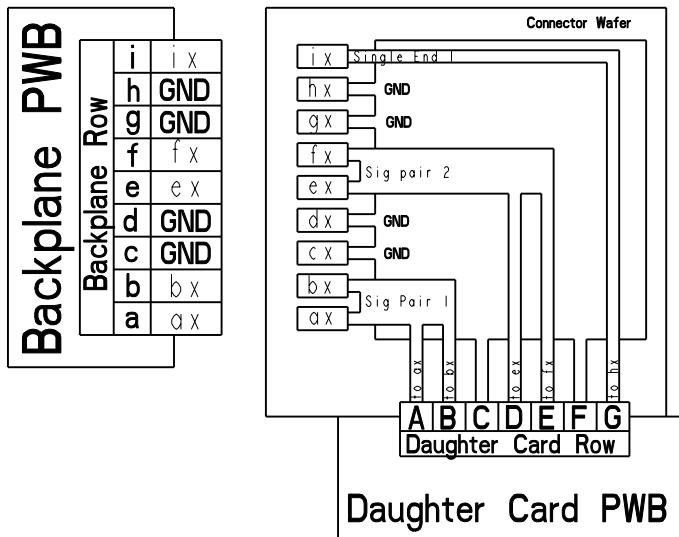
MATED CONFIGURATION



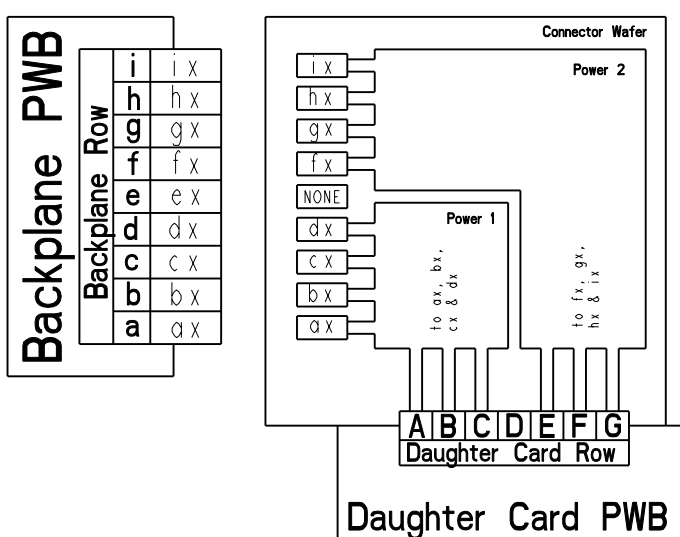
746-2026-000
DIFFERENTIAL (EVEN) WAFER MAPPING



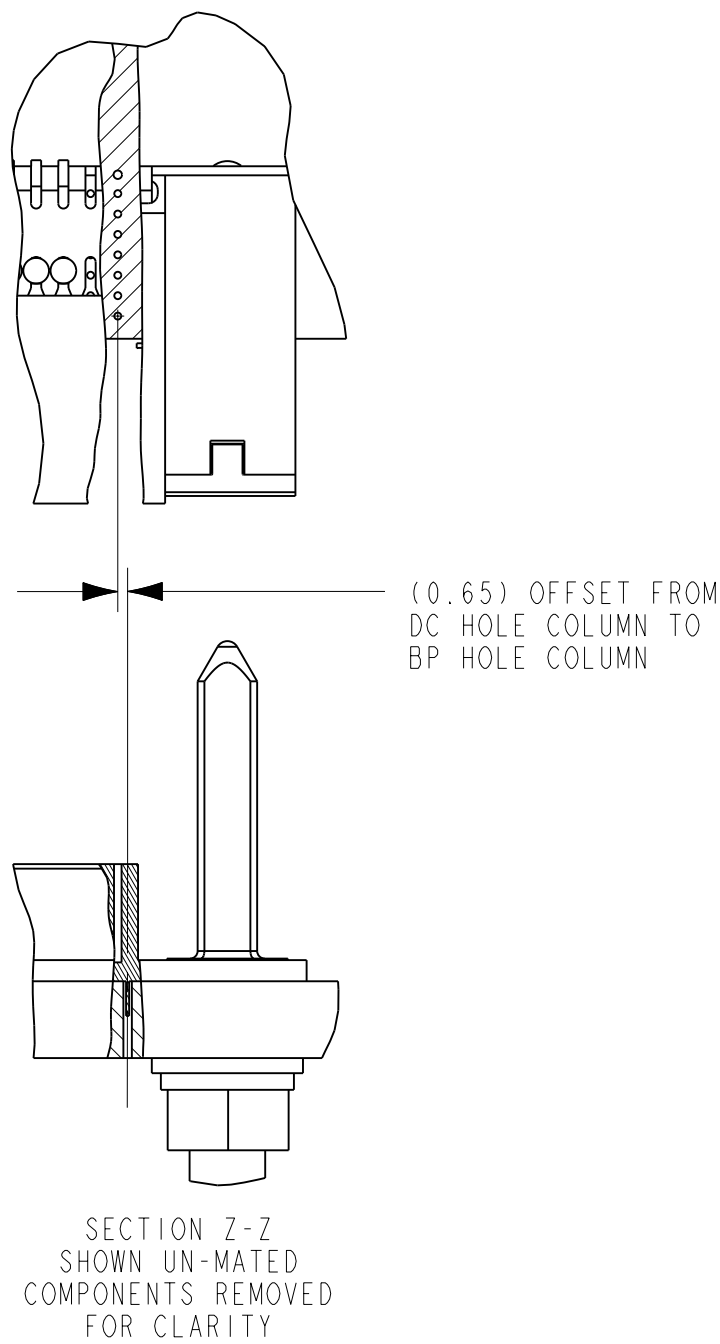
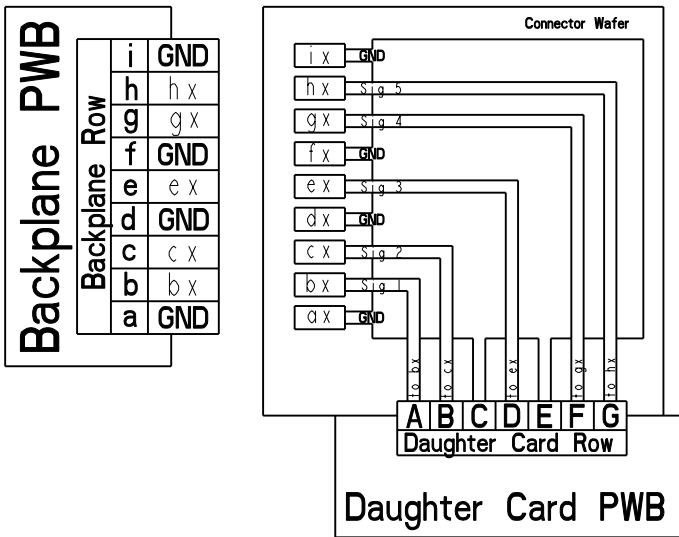
746-2025-000
DIFFERENTIAL (ODD) WAFER MAPPING



746-2023-000
POWER WAFER MAPPING



746-2024-000
SINGLE ENDED WAFER MAPPING



Mouser Electronics

Authorized Distributor

Click to View Pricing, Inventory, Delivery & Lifecycle Information:

[Amphenol:](#)

[VP773-10001](#)