

C. W. Weston	8-27-90
DESCRIPTION	APP'D./DATE
REV	REV

SAFETY ORGANIZATION(S):

THIS FILTER HAS BEEN FORMALLY RECOGNIZED, CERTIFIED OR APPROVED BY THE LISTED AGENCY. THEREFORE, ALL TEST/REQUIREMENTS SPECIFIED IN THE LATEST REVISION OF THE FOLLOWING AGENCY STANDARDS HAVE BEEN MET.

- UL 1283
- CSA 22.2 NO. 0, 0.4, 8
- 20 OR 30 AMP, 250VAC PHASE TO NEUTRAL/GND
- 20 OR 30 AMP, 440VAC PHASE TO PHASE
- 50-60Hz
- 1.4 ma @ 120 V 60 Hz
- 3.4 ma @ 250 V 50 Hz
- 10°C TO +40°C @ RATED CURRENT, I_r

$$I_o = I_r \sqrt{\frac{85 - T_o}{45}}$$

- 25°C to +85°C
- 21 DAYS @ 40°C 95% RH

RELIABILITY SPECIFICATIONS:

STORAGE TEMPERATURE:
HUMIDITY:

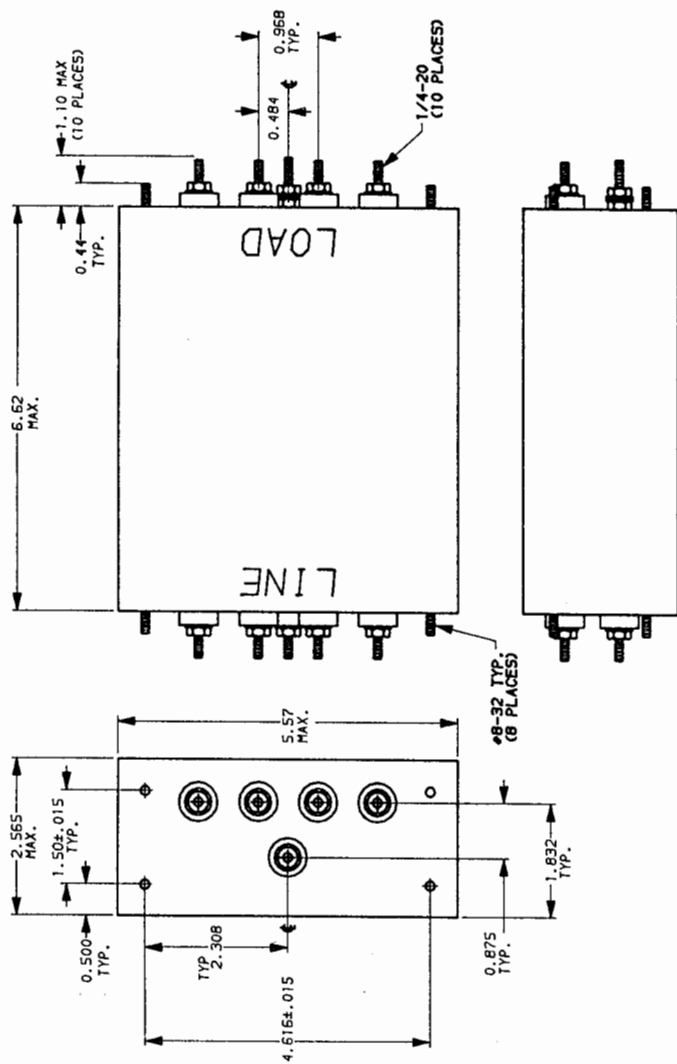
TEST SPECIFICATIONS:

- INDUCTANCE: 20A = 4.44mH NOMINAL 30A = 1.97 mH NOMINAL
- CAPACITANCE: (MEASURED @ 1 KHZ, 0.25 VAC MAX., 25°C ±1°C)
- PHASE/NEUTRAL TO GROUND: .018uF ±20%
- PHASE TO NEUTRAL: 3.29uF ±20%
- DISCHARGE RESISTOR: 110 KΩ
- PHASE/NEUTRAL TO GROUND AND PHASE TO PHASE INSULATION RESISTANCE: 5000 MΩ (MIN) AT 100 VDC
- (W/O DISCHARGE RESISTOR) 20°C AND 50% RH

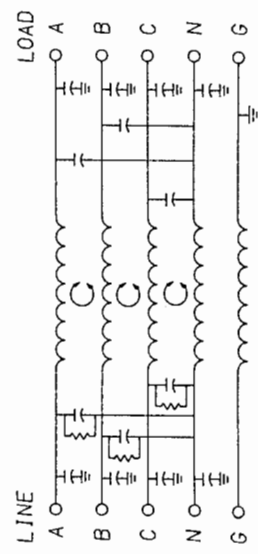
RECOMMENDED RECEIVING INSPECTION HIPOT:

- PHASE TO GROUND 1500 VAC FOR 1 MINUTE
- NEUTRAL TO GROUND 1500 VAC FOR 1 MINUTE
- PHASE TO NEUTRAL 1450 VDC FOR 1 MINUTE
- FILTER APPROVAL:

THE BEST WAY TO SELECT AND QUALIFY A FILTER IS FOR YOUR ENGINEERING TO TEST THE UNIT IN YOUR EQUIPMENT.



NOTE: UNLESS OTHERWISE SPECIFIED, TOLERANCE TO BE ±.045



50Ω - 50n (MINIMUM) INSERTION LOSS	
FREQUENCY MHZ	COMMON
.05	22 39 55 56 65 65 54
.15	15 30 55 55 61 63 50
.50	20 50 65 65 65 60 52
1.0	5 43 65 65 65 59 49
1.05	
10	
30	
DIFF.	dB
	50 50 50 50 50 50 50

This document is proprietary to CORCOM INC. and is not to be reproduced nor used for manufacturing purposes except on CORCOM's order or prior written consent.

TOLERANCE EXCEPT AS NOTED
DECIMAL: .XXX .XX .X ANGLES
ENGLISH: ± 1°
METRIC: ±

MATERIAL: AS SUPPLIED

FINISH:



LIBERTYVILLE, IL 60048

SCALE	1:2	DATE	5-9-88	DRG. NO.	
REV.		BY	TDL	CM	
		ORIGINATOR			20AYP6C & 30AYP6C.01

Mouser Electronics

Authorized Distributor

Click to View Pricing, Inventory, Delivery & Lifecycle Information:

[TE Connectivity:](#)

[30AYP6C](#)