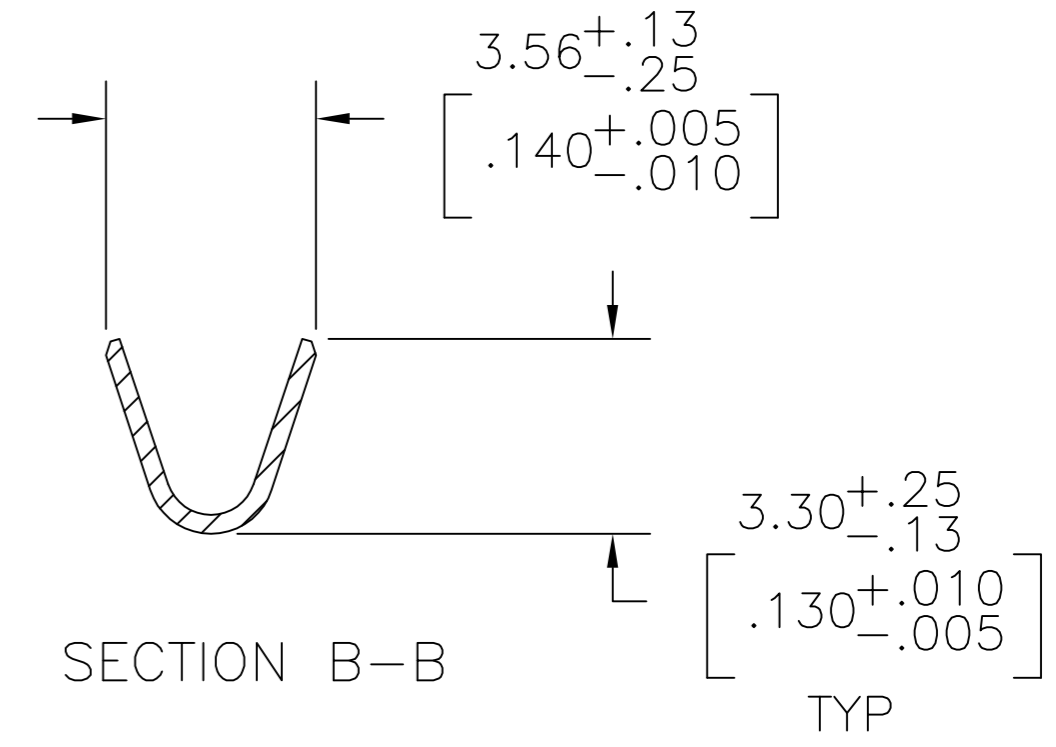
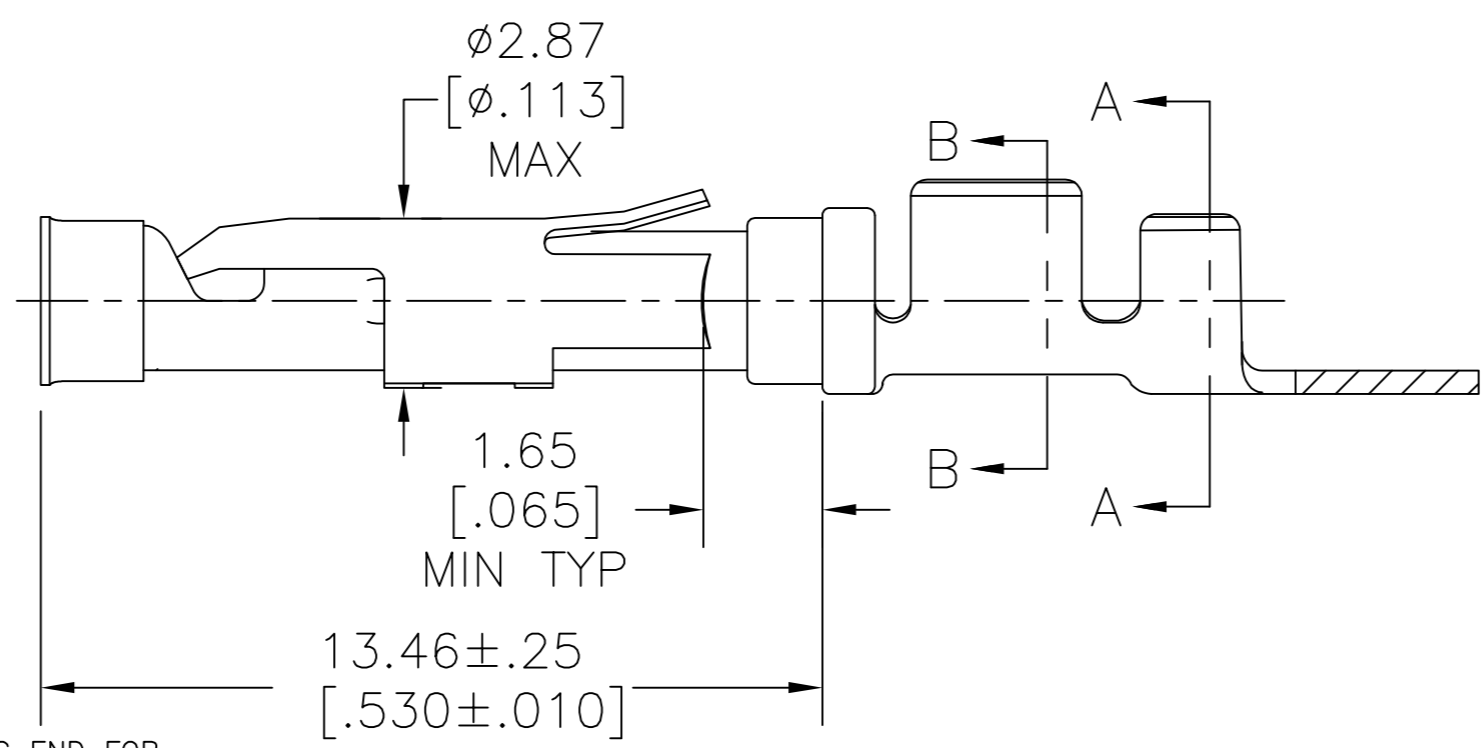
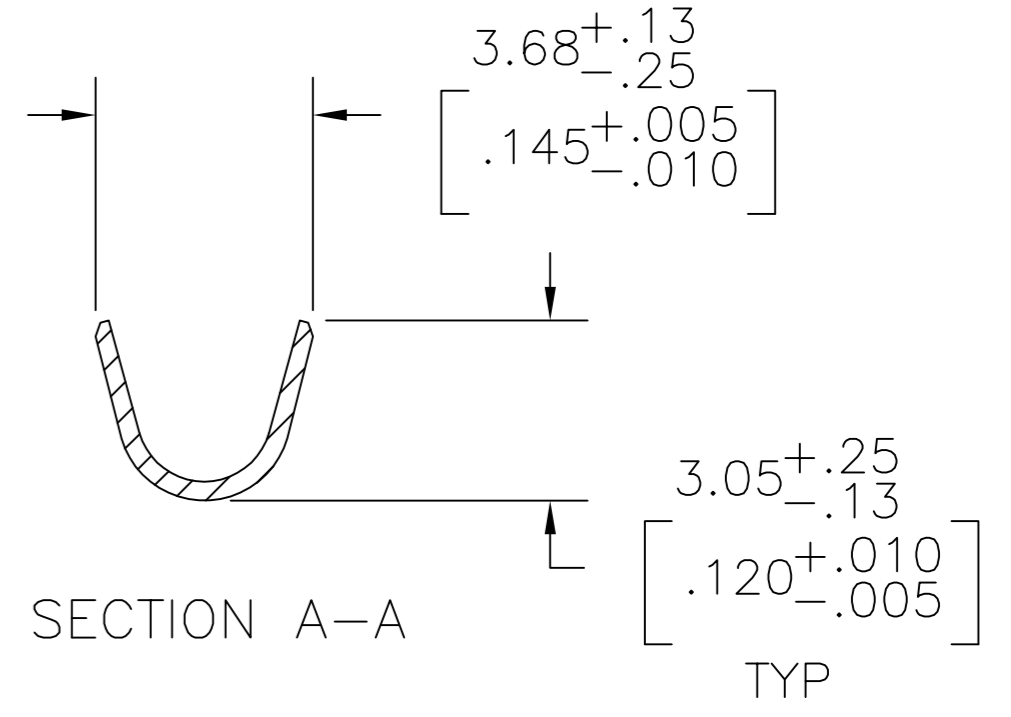
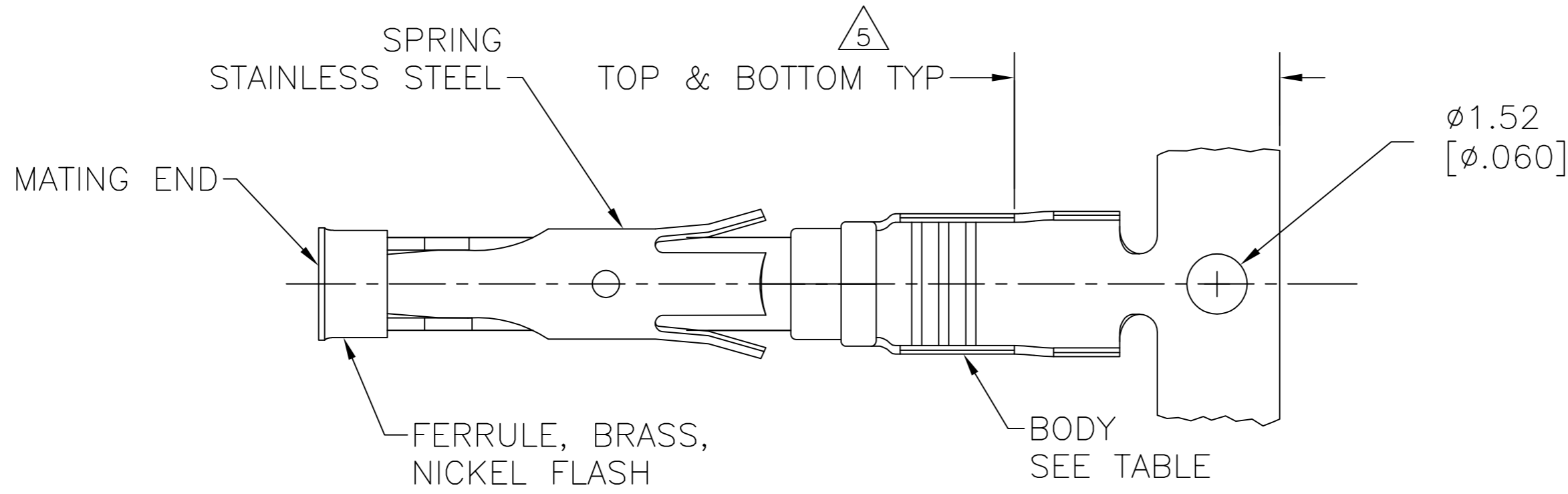


THIS DRAWING IS UNPUBLISHED. RELEASED FOR PUBLICATION  
 © COPYRIGHT - By - ALL RIGHTS RESERVED.

| REVISIONS |     |                           |           |     |      |
|-----------|-----|---------------------------|-----------|-----|------|
| P         | LTR | DESCRIPTION               | DATE      | DWN | APVD |
| AG        |     | REVISED PER ECO-12-012320 | 04JUL12   | KH  | MZ   |
| AH        |     | REVISED PER ECO-16-017885 | 06OCT2017 | RS  | MZ   |



$\phi 1.689 \pm .050$   
 $[\phi .0665 \pm .0020]$

- 1 0.76µm [.000030] MIN GOLD PER MIL-G-45204 ON MATING END FOR A LENGTH OF 5.08 [.200] MIN WITH GOLD FLASH ON THE REMAINDER OVER 0.76µm [.000030] MIN NICKEL PER QQ-N-290.
- 2 1.27µm [.000050] MIN TIN-LEAD PER MIL-T-10727 OVER 0.76µm [.000030] MIN NICKEL PER QQ-N-290.
- 3 0.76µm [.000030] MIN GOLD PER MIL-G-45204 ON MATING END FOR A LENGTH OF 5.08 [.200] MIN WITH A UNIFORM GRADIENT TO 0.25[.000010] MIN GOLD PER MIL-G-45204 ON THE REMAINDER OVER 0.76µm [.000030] MIN NICKEL PER QQ-N-290.
- 4 0.38µm [.000015] MIN GOLD PER MIL-G-45204 ON MATING END FOR A LENGTH OF 5.08 [.200] MIN WITH 1.27µm [.000050] MIN MATTE TIN PLATE IN WIRE CRIMP AREA, BOTH OVER 0.76µm [.000030] MIN NICKEL PER QQ-N-290.
- 5 GOLD PLATING NEED NOT APPEAR IN THIS AREA.
- 6 REVERSE REELED FOR MINI-APPLICATOR.
- 7 WIRE RANGE 18-16 AWG. INSULATION RANGE 2.03[.080]-2.54[.100].
- 8 0.38µm [.000015] MIN GOLD PER MIL-G-45204 ON MATING END FOR A LENGTH OF 5.08 [.200] MIN, 1.27µm [.000050] MIN TIN-LEAD PER MIL-T-10727 FOR A LENGTH OF 5.69 [.224] MIN ON OPPOSITE END, BOTH OVER 1.27µm [.000050] MIN NICKEL PER QQ-N-290 ON ENTIRE CONTACT.
- 9 1.27µm [.000050] MIN TIN PER MIL-T-10727 OVER 0.6µm [.000030] MIN NICKEL PER QQ-N-290.
- 10 2.54µm [.000100] MIN SILVER OVER 0.76µm [.000030] MIN NICKEL PER QQ-N-290.
- 11 OBSOLETE PARTS: OBSOLETE CIS STREAMLINING PER D.RENAUD/D.SINISI
- 12 0.76µm [.000030] MIN GOLD PER MIL-G-45204 ON MATING END FOR A LENGTH OF 5.08 [.200] MIN WITH 1.27µm [.000050] MIN MATTE TIN PLATE IN WIRE CRIMP AREA, BOTH OVER 0.76µm [.000030] MIN NICKEL PER QQ-N-290.

| REELING          | BODY FINISH | BODY MATERIAL   | LOOSE PIECE REF    | PART NO.             |
|------------------|-------------|-----------------|--------------------|----------------------|
| 6                | 10          | BRASS           | -                  | 2-66358-3            |
| 6                | 9           | BRASS           | -                  | <del>2-66358-2</del> |
| 6                | 9           | CU-NI ALLOY     | 1-66360-6          | 2-66358-1            |
| 6                | 2           | CU-NI ALLOY     | 1-66360-5          | 2-66358-0            |
| 6                | 1           | CU-NI ALLOY     | 1-66360-4          | 1-66358-9            |
| 6                | 9           | PHOSPHOR BRONZE | -                  | 1-66358-8            |
| STANDARD         | 9           | BRASS           | 1-66360-2          | 1-66358-7            |
| 6                | 9           | BRASS           | 1-66360-2          | 1-66358-6            |
| OBSOLETE         | 6           | BRASS           | 66360-9            | 1-66358-5            |
| SUP BY 1-66358-6 | 6           | BRASS           | -                  | <del>1-66358-4</del> |
| 6                | 1           | PHOSPHOR BRONZE | 66360-8            | 1-66358-3            |
| OBSOLETE         | 6           | PHOSPHOR BRONZE | <del>66360-7</del> | 1-66358-2            |
| 6                | 12          | BRASS           | 66360-4            | 1-66358-0            |
| 6                | 4           | BRASS           | 66360-3            | 66358-9              |
| 6                | 2           | BRASS           | 66360-2            | 66358-6              |
| 6                | 3           | BRASS           | 66360-1            | 66358-5              |
| STANDARD         | 12          | BRASS           | 66360-4            | 66358-4              |
| STANDARD         | 4           | BRASS           | 66360-3            | 66358-3              |
| STANDARD         | 2           | BRASS           | 66360-2            | 66358-2              |
| STANDARD         | 3           | BRASS           | 66360-1            | 66358-1              |

THIS DRAWING IS A CONTROLLED DOCUMENT. DWN V. FURLER 23JUL2003  
 CHK G. STEINHAUER 23JUL03  
 APVD G. STEINHAUER 23JUL03

**TE** TE Connectivity

NAME: SOCKET ASSEMBLY, .062, TYPE III+

SIZE: A2 CAGE CODE: 00779 DRAWING NO: C=66358 RESTRICTED TO: -

MATERIAL: SEE CALLOUTS FINISH: SEE CALLOUTS WEIGHT: - SCALE: 8:1 SHEET: 1 of 1 REV: AH

CUSTOMER DRAWING

# Mouser Electronics

Authorized Distributor

Click to View Pricing, Inventory, Delivery & Lifecycle Information:

[TE Connectivity:](#)

[1-66358-7](#)