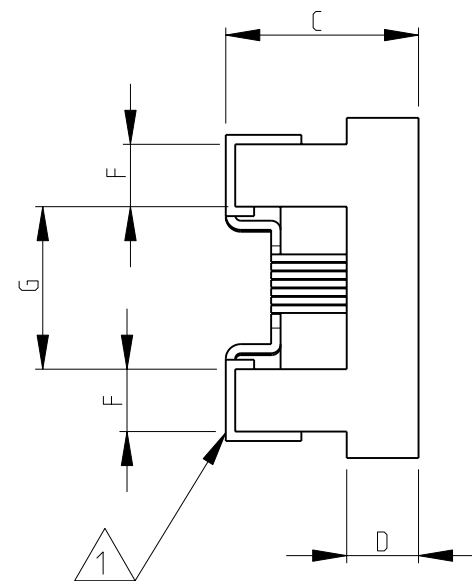


1 TERMINAL WRAPAROUND: 0.007"(0.18mm) APPROX. ON BOTH ENDS

2 AVAILABLE IN 2 DIFFERENT SERIES

3 FOR FURTHER INFORMATION SEE DATA SHEET FOR
3650 SERIES-LOW INDUCTANCE,HIGH FREQUENCY CHIP INDUCTOR

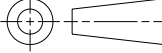
Technical drawing of a rectangular plate. The drawing shows a side view of the plate with a central horizontal slot. The slot is defined by two parallel lines, with the upper line having a small semi-circular notch. The plate has a uniform thickness. Dimension A is indicated by a vertical double-headed arrow on the left, spanning the height of the plate. Dimension B is indicated by a horizontal double-headed arrow at the top, spanning the width of the plate.



RoHS Compliant

36501E	1.27	0.76	0.61	0.15	0.23	0.56	0.66	0.50	0.46
36501J	1.80	1.12	1.02	0.38	0.33	0.86	1.02	0.64	0.64
SERIES	A MAX.	B MAX.	C MAX.	D REF.	F	G	H	K	J

DWN	SUBHASH.M	14-NOV-08
CHK	PRAKASH.S	14-NOV-08
APVD	STEPHEN.P	14-NOV-08

DIMENSIONS:		TOLERANCES UNLESS OTHERWISE SPECIFIED:	
mm			
	0 PLC	± 0.2	
	1 PLC	± 0.1	
	2 PLC	$\pm -$	
	3 PLC	$\pm -$	
	4 PLC	$\pm -$	
	ANGLES	$\pm 5^{\circ}$	
MATERIAL	-	FINISH	-

TE Connectivity

8	NAME	LOW INDUCTANCE, HIGH FREQUENCY CHIP INDUCTOR SERIES 3650
---	------	--

APPLICATION SPEC	SIZE	CAGE CODE	DRAWING NO	RESTRICTED TO
-	A3	00779	C= 1624112	-
WEIGHT				
CUSTOMER DRAWING	SCALE	20:1	SHEET	1 OF 1
			REV	BA1

Mouser Electronics

Authorized Distributor

Click to View Pricing, Inventory, Delivery & Lifecycle Information:

[TE Connectivity:](#)

[36501J27NJTDG](#)