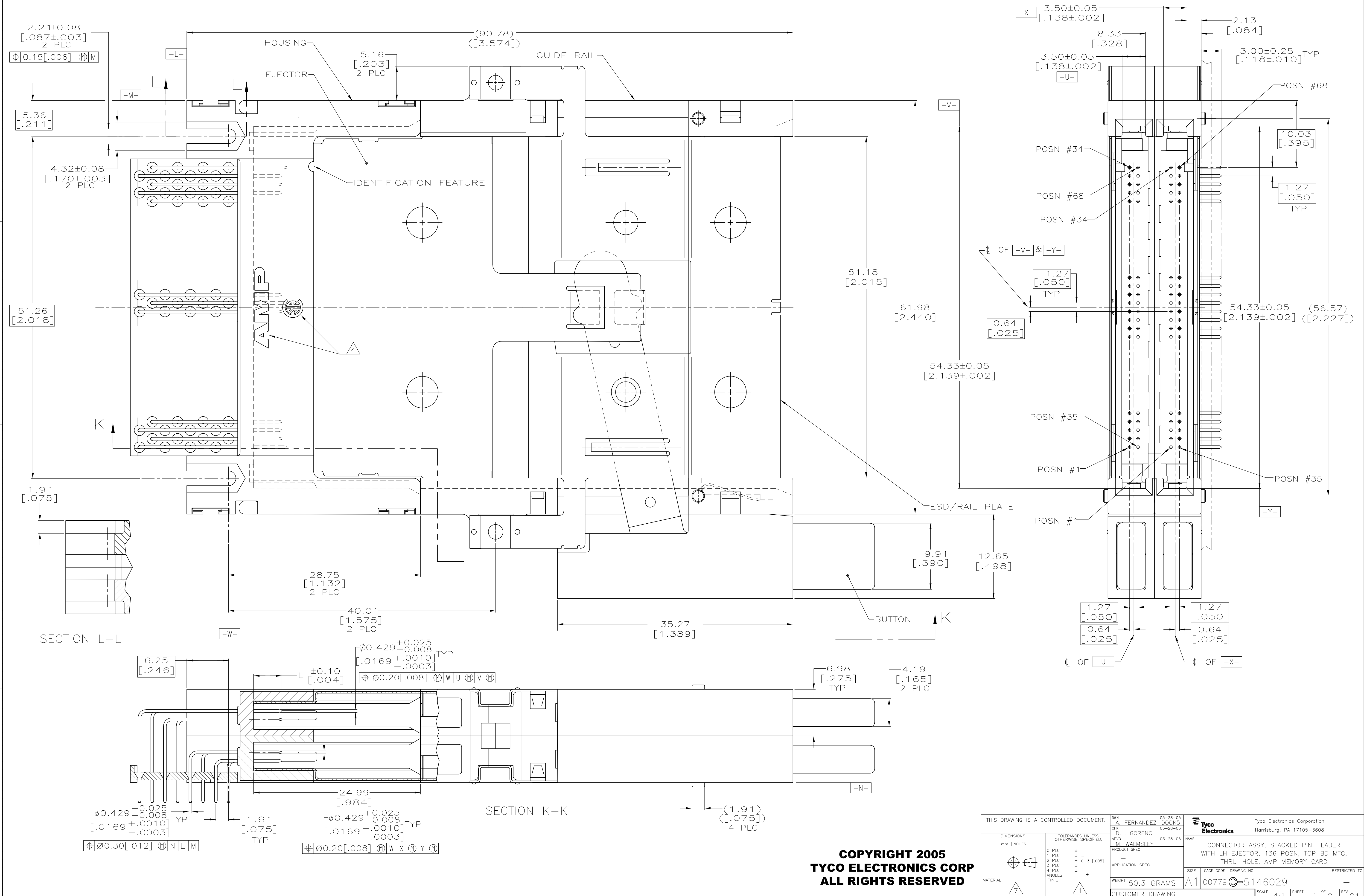
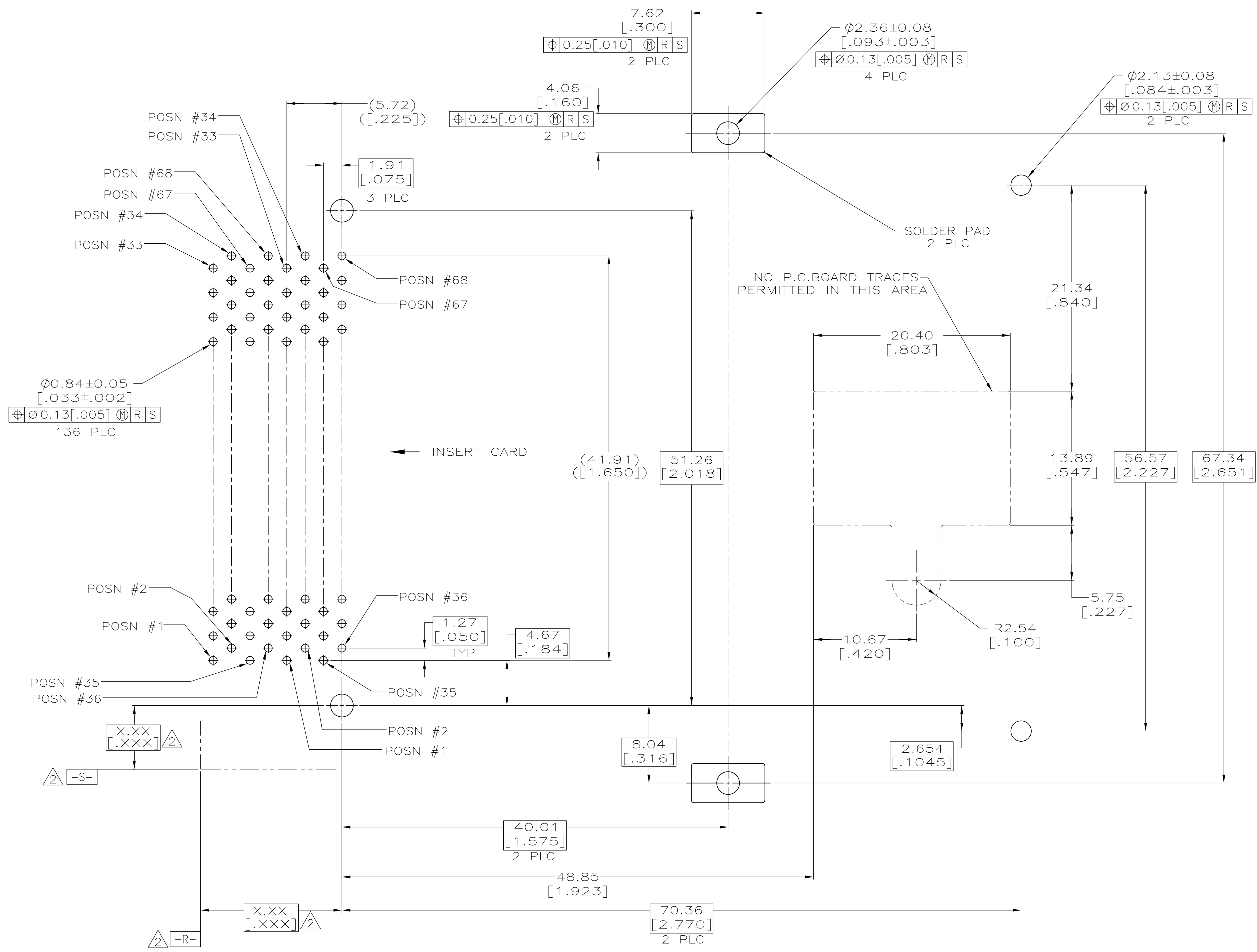


LOC		DIST		REVISIONS			
P	LR	DESCRIPTION	DATE	OWN	APPD		
0		REL PER EC 0513-0031-05	03-28-05	AF	JG		
01		REVISED PER ECO-09-024927	07NOV09	KK	AEG		



**COPYRIGHT 2005  
 TYCO ELECTRONICS CORP  
 ALL RIGHTS RESERVED**

THIS DRAWING IS A CONTROLLED DOCUMENT.		DWN A. FERNANDEZ-DOCK5 03-28-05	03-28-05	Tyco Electronics Corporation Harrisburg, PA 17105-3608
DIMENSIONS: mm [INCHES]		CHK D.L. GORENC 03-28-05	03-28-05	
TOLERANCES UNLESS OTHERWISE SPECIFIED:		APVD M. WALMSLEY 03-28-05		NAME CONNECTOR ASSY, STACKED PIN HEADER WITH LH EJECTOR, 136 POSN, TOP BD MTG, THRU-HOLE, AMP MEMORY CARD
0 PLC ± -		PRODUCT SPEC		SIZE A1
1 PLC ± -		APPLICATION SPEC		CAGE CODE 00779
2 PLC ± 0.13 [005]				DRAWING NO C=5146029
3 PLC ± -				RESTRICTED TO
4 PLC ± -				
ANGLES ± -				
MATERIAL 7	FINISH 1	WEIGHT 50.3 GRAMS	SCALE 4:1	SHEET 1 OF 2
CUSTOMER DRAWING				REV 01



- △ PIN:  
 0.00076[.000030] MINIMUM GOLD IN CONTACT AREA,  
 0.00381[.000150] MIN TIN ON SOLDER TAILS,  
 ALL OVER 0.00127[.000050] MINIMUM NICKEL
- △ DATUMS AND BASIC DIMENSIONS ESTABLISHED BY CUSTOMER
- 3. CONNECTOR REQUIRES USE OF 4 - SIZE 2M SCREWS FOR FASTENING TO PRINTED CIRCUIT BOARD
- △ RECESSED AMP AND CSA LOGOS LOCATED ON BOTH SIDES OF HOUSINGS.
- △ ASSEMBLY KEYED FOR 5 VOLT CARDS.
- △ ASSEMBLY KEYED FOR LOW VOLT CARDS (3.3V).
- △ MATERIAL:  
 HOUSING, GUIDES, SHROUD, BUTTON & ORGANIZER: LCP,  
 COLOR; BLACK  
 PINS: PHOSPHOR BRONZE & BRASS  
 EJECTOR, RAIL PLATE & LEVER: STAINLESS STEEL
- △ OBSOLETE PARTS: OBSOLETE CIS STREAMLINING PER D.RENAUD/D.SINISI

RECOMMENDED BOARD LAYOUT

8	OBSOLETE	△6	1,17,34 35,51,68	ALL OTHER PINS	36,67	<del>5146029-2</del>
		△5	1,17,34 35,51,68	ALL OTHER PINS	36,67	5146029-1
VOLTAGE KEYING			5.0 [.197]	4.25 [.167]	3.5 [.138]	PART NUMBER
"L" (PIN LENGTH) AND LOCATION						

THIS DRAWING IS A CONTROLLED DOCUMENT.		OWN A. FERNANDEZ-DOCK5 03-28-05	CHK D.L. GORENC 03-28-05	APVD M. WALMSLEY 03-28-05	NAME	Tyco Electronics Corporation Harrisburg, PA 17105-3608	
DIMENSIONS: mm [INCHES]		TOLERANCES UNLESS OTHERWISE SPECIFIED:		PRODUCT SPEC		CONNECTOR ASSY, STACKED PIN HEADER WITH LH EJECTOR, 136 POSN, TOP BD MTG, THRU-HOLE, AMP MEMORY CARD	
MATERIAL		FINISH		APPLICATION SPEC		RESTRICTED TO	
CUSTOMER DRAWING		SCALE 4:1		SHEET 2 OF 2		REV 01	

**COPYRIGHT 2005  
 TYCO ELECTRONICS CORP  
 ALL RIGHTS RESERVED**

# Mouser Electronics

Authorized Distributor

Click to View Pricing, Inventory, Delivery & Lifecycle Information:

[TE Connectivity:](#)

[5146029-1](#)