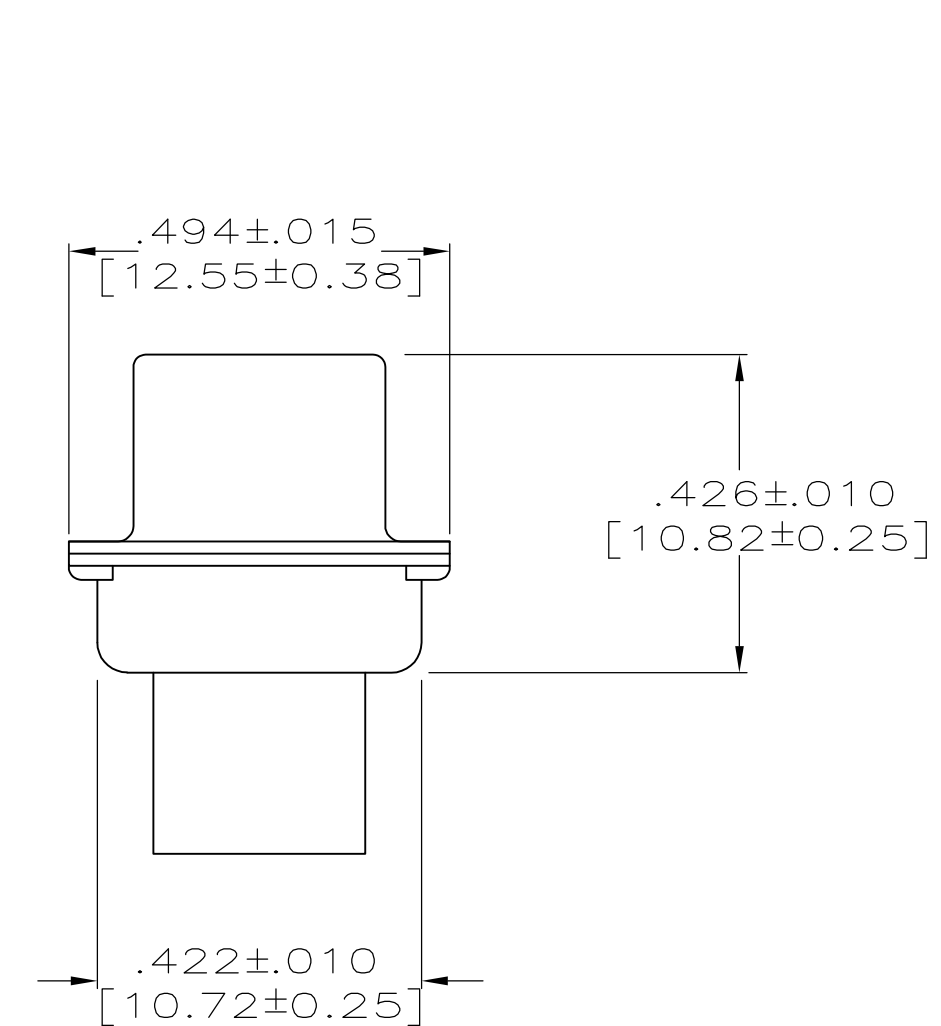
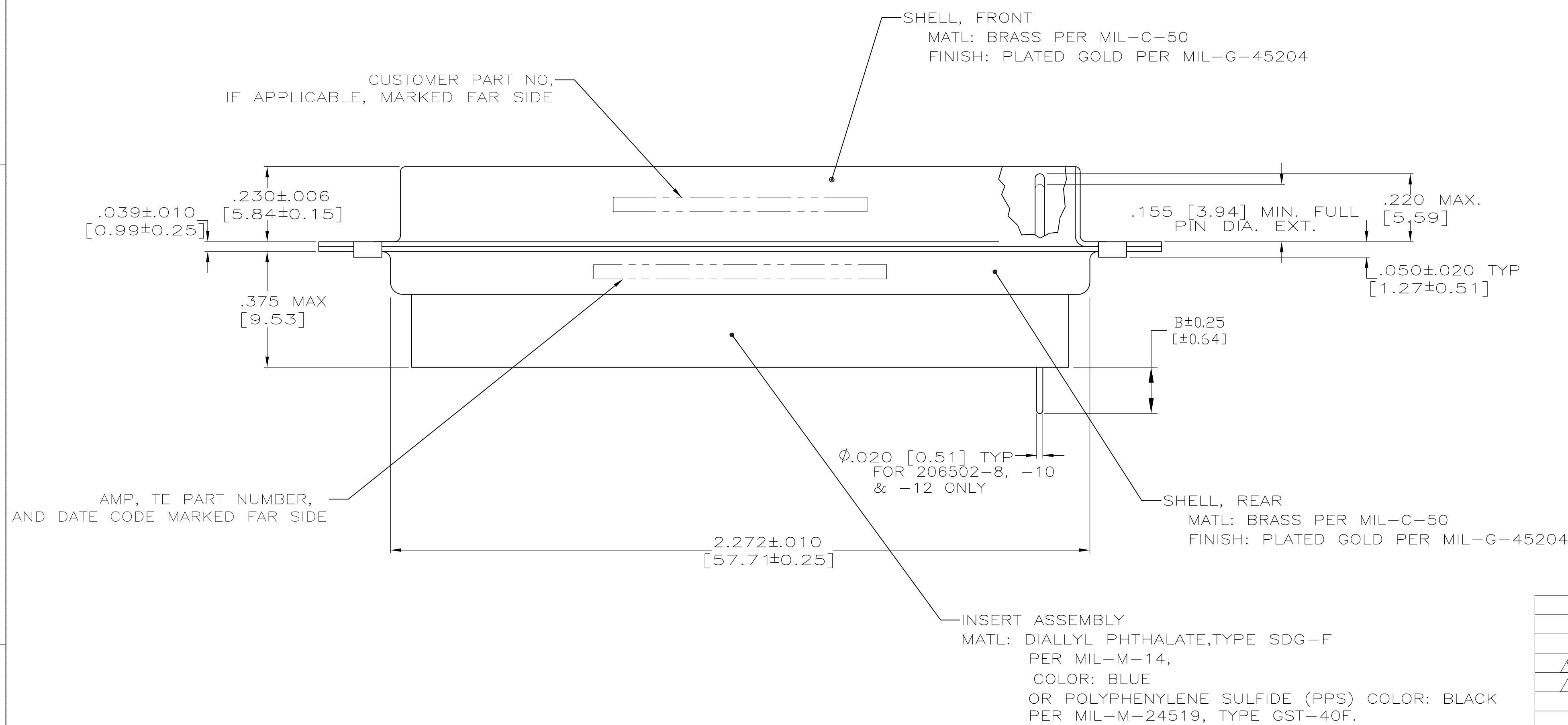
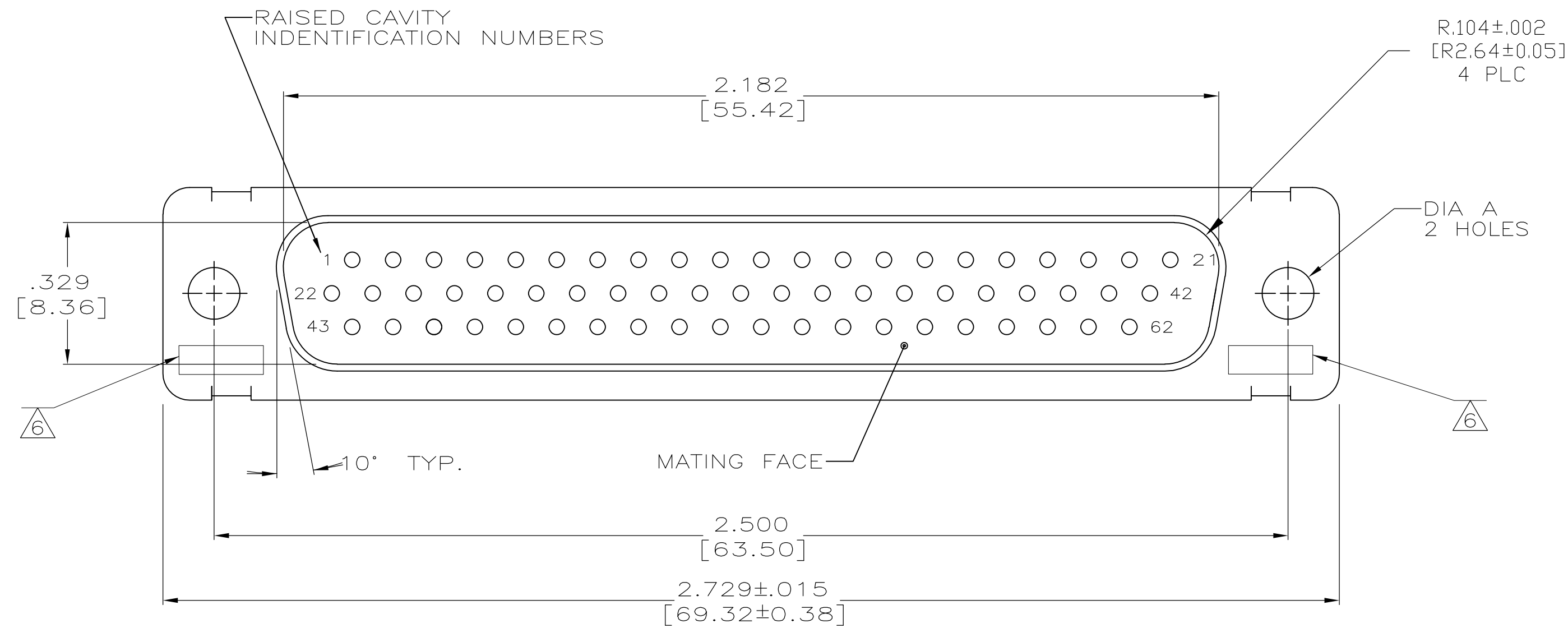









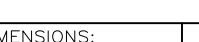


LOC	DIST	REVISIONS					
		P	LTR	DESCRIPTION	DATE	DWN	APVD
			Z	REV PER ECO 15-016064	11-9-15	CT	CD



TE PART NUMBER 204370-8
GSFC PART NUMBER G-08-P1
(SUPPLIED WITH 206502-6 ONLY)

	.150 [3.81]	.120 [3.05]	20131204P2062P	1-206502-2	1-206502-2
	--	.120 [3.05]	570566-10	1-206502-1	1-206502-1
	.175 [4.45]	.120 [3.05]	-	1-206502-0	1-206502-0
	--	.120 [3.05]	311P407-4P-B-12	206502-4	206502-9
	.150 [3.81]	.120 [3.05]	20025720P2062P	206502-8	206502-8
	--	.154 [3.91]	SC81D139-054	206502-7	206502-7
	--	.120 [3.05]	R4383P62P	206502-6	206502-6
	--	.120 [3.05]	R4383P62P-2	206502-5	206502-5
	--	.120 [3.05]	311P407-4P-B-12	206502-4	206502-4
	--	.154 [3.91]	----	206502-3	206502-3
	--	.120 [3.05]	R9259P62P	206502-2	206502-2
	--	.154 [3.91]	311P407-4P-B-15	206502-1	206502-1
REMARKS	DIA B	DIA A	CUSTOMER P/N ON CONNECTOR	TE P/N ON CONNECTOR	TE P/N

THIS DRAWING IS A CONTROLLED DOCUMENT.			DWN M. CLOUSER	12-16-88	 TE Connectivity						
DIMENSIONS:			QW T. CANTLIN	12-16-88							
TOLERANCES UNLESS OTHERWISE SPECIFIED:			APVD F. BALLOW	12-16-88							
INCHES			PRODUCT SPEC								
	0 PLC	± -	NAME	AMPLITUDE NONMAGNETIC PLUG ASSEMBLY, SERIES 90, SHELL SIZE 4, 62 POSITION							
	1 PLC	± -									
	2 PLC	± -									
	3 PLC	± .005 [0.13]									
	4 PLC	± -									
ANGLES		± °30'	SIZE	GAGE CODE	DRAWING NO	RESTRICTED TO					
FINISH											
MATERIAL	SEE CALLOUTS	SEE CALLOUTS	WEIGHT	—	A1	00779	C-206502				
CUSTOMER DRAWING						SCALE	4:1	SHEET	1 of 1	REV	7

Mouser Electronics

Authorized Distributor

Click to View Pricing, Inventory, Delivery & Lifecycle Information:

[TE Connectivity:](#)

[206502-2](#)