

## Feature

- Low Power Consumption
- High Intensity
- I.C. compatible

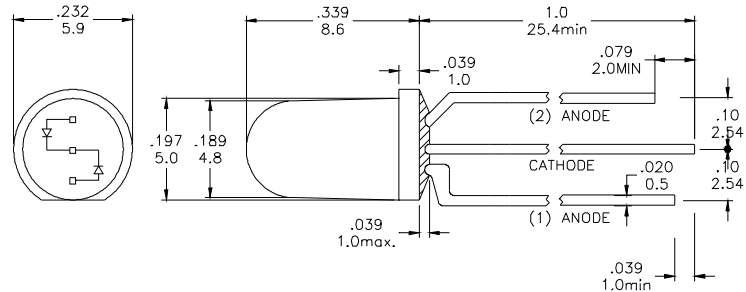
## Applications

- Commercial Outdoor Sign Board
- Front Panel Indicator

## Description

- The (1)Yellow and (2)Green Chips are Matched For uniform Light Output
- Diffusion Lens

## Package Dimension



\* Tolerance:  $\frac{0.01}{0.25}$  Unit:  $\frac{\text{inch}}{\text{mm}}$

## Absolute Maximum Ratings at Ta=25°C

Symbol	Parameter	Max.	Unit
PD	Power Dissipation	100	mW
VR	Reverse Voltage	5	V
IAF	Average Forward Current	30	mA
IPF	Peak Forward Current ( Duty=0.1 , 1kHz )	100	mA
—	Derating Linear Form 25°C	0.4	mA / °C
Topr	Operating Temperature Range	- 40 to + 80	°C
Tstg	Storage Temperature Range	- 40 to + 100	°C
Lead Soldering Temperature [1.6mm ( 0.063inch ) From Body] 260°C For 5 Seconds.			

## Electrical / Optical Characteristics and Curves at Ta=25°C

Symbol	Parameter	Test Condition	Min.	Typ.	Max.	Unit
VF	Forward Voltage	IF = 20 mA	Y	2.0	2.4	V
			G	2.0	2.4	
IR	Reverse Current	VR = 5 V			50	μA
IV	Luminous Intensity	IF = 20 mA	Y	80		mcd.
			G	80		
λd	Dominant Wavelength	IF = 20 mA	Y	590		nm
			G	570		

Specific binning requirements- please contact our home office

# Mouser Electronics

Authorized Distributor

Click to View Pricing, Inventory, Delivery & Lifecycle Information:

VCC:

[VAOB-5GCDE2-C](#)