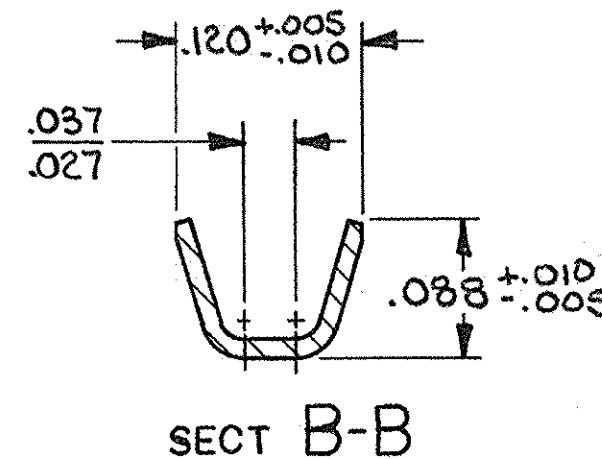
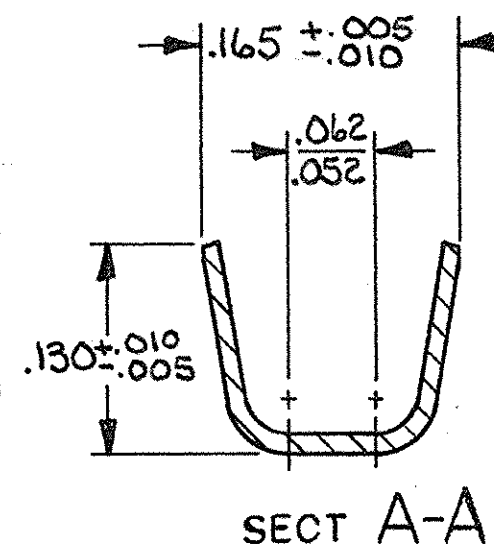
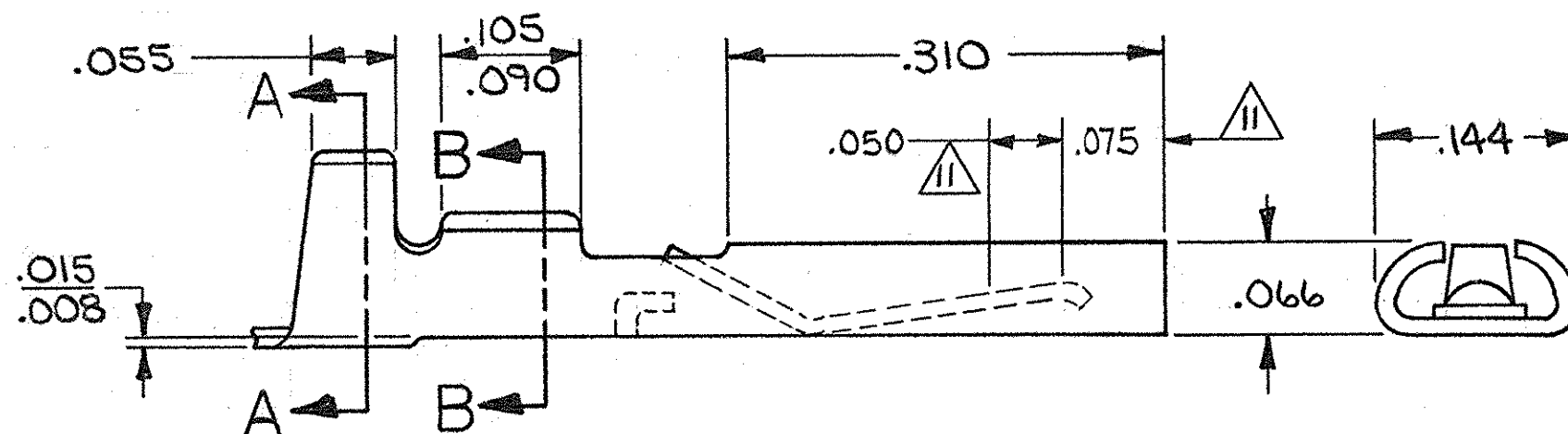
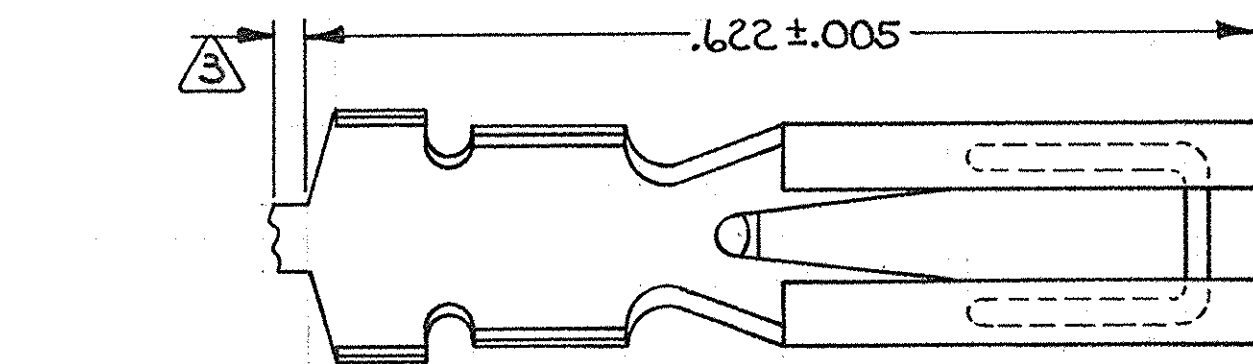


© COPYRIGHT 1981 BY AMP INCORPORATED, HARRISBURG, PA.
ALL INTERNATIONAL RIGHTS RESERVED. AMP INCORPORATED PRODUCTS
COVERED BY U. S. AND FOREIGN PATENTS AND/OR PATENTS PENDING.

REVISIONS

P	F	ZONE	LTR	DESCRIPTION	DATE	APPROVED
01	✓		O1	REVISED PER 8079	8/11/82	EAM
✓	✓		P	035-4-5-7ECNOF0949	11-88	JW
			R	REVISED PER OH14-0139-05	1-06	PY RG
			S	REV PER ECO-12-000778	1-12	DE



1. FOR CRIMPING INFORMATION SEE SPEC.#108-9201.
2. FOR SUPPLEMENTAL SPECIFICATIONS SEE #108-9004.
- 3 CUT-OFF TAB FOR LOOSE PIECE PARTS IS .005-.020.
- 4 .000015 GOLD OVER .000030 NICKEL IN CONTACT AREA.
- 5 .000030 GOLD OVER .000030 NICKEL IN CONTACT AREA.
- 6 .000050 GOLD OVER .000030 NICKEL IN CONTACT AREA.
- 7 MAT'L = PHOS. BRONZE
- 8 INSUL. RANGE: .054-.090 OR 2(.045-.072)
- 9 WIRE RANGE: 1-#18, 2-#20 OR 2-#22
- 10 .000100 TIN-LEAD OVER .000030 NICKEL ON WIRE BARREL.
- 11 THE GOLD COVERED AREA WILL BE THE .125 BAND. THE GOLD THICKNESS IS TO BE MEASURED IN THE .050 WIDE BAND.
- 13 .000100 TIN OVER .000030 NICKEL IN WIRE BARREL

OBSOLETE	—	9	8	5	13	5-531589-3
OBSOLETE	531589-7	9	8	12	6	531589-4
	531589-6	9	8	5	10	531589-3
OBSOLETE	531589-5	9	8	4	10	531589-2

UNLESS OTHERWISE SPECIFIED DIMENSIONS ARE IN INCHES. TOLERANCES ON: DECIMALS $\pm .010$ ANGLES \pm		CONTRACT NO DR <i>DeVans</i> 2-26-81 CHK <i>D.X. Kelly</i> 2-26-81 APPD <i>D.J. Kelly</i> 2-27-81 APPD <i>E. Parsho</i> 2-27-81		AMP INCORPORATED Harrisburg, Pa.	
MATERIAL 7		L.P. P/N		NAME AMP BLADE II RECEPTACLE CONTACT	
FINISH 4 5 6 10		WIRE RANGE		DRAWING NO 531589	
		INSULATION RANGE		CODE IDENT NO 00779	
		OTHER APPD		SCALE 8-1	
				SHEET 1 OF 1	

Mouser Electronics

Authorized Distributor

Click to View Pricing, Inventory, Delivery & Lifecycle Information:

[TE Connectivity:](#)

[531589-6](#)