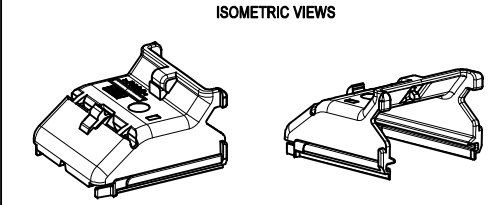
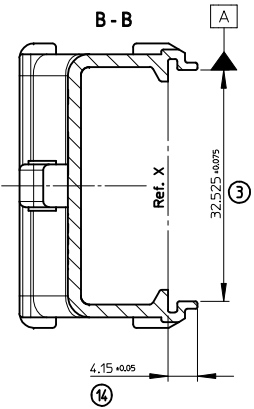
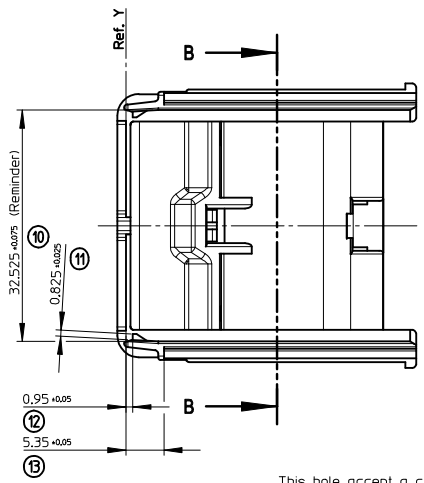
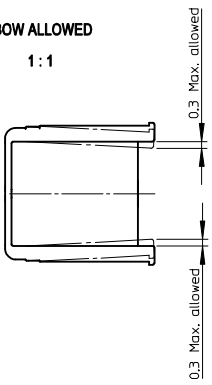
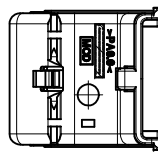
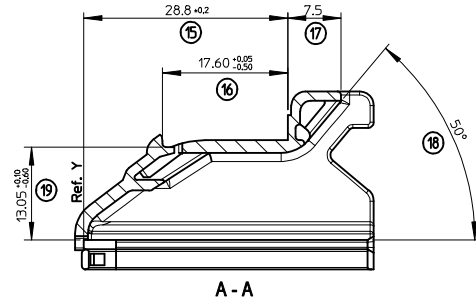
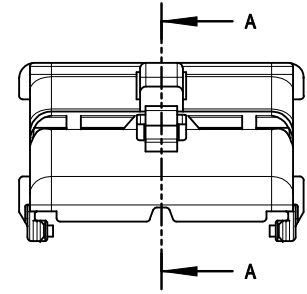
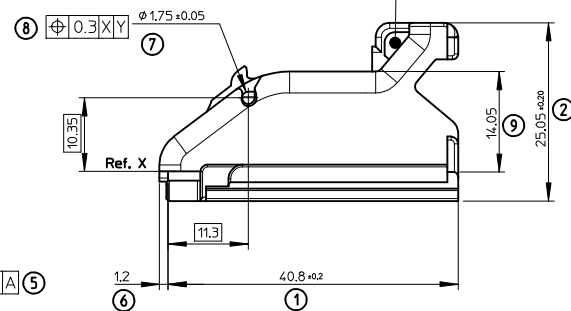
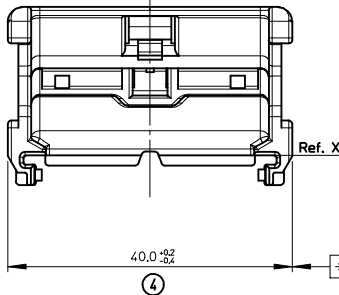
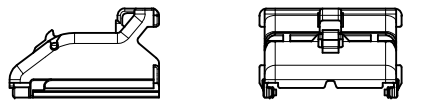


BOW ALLOWED

1:1



ISOMETRIC VIEWS

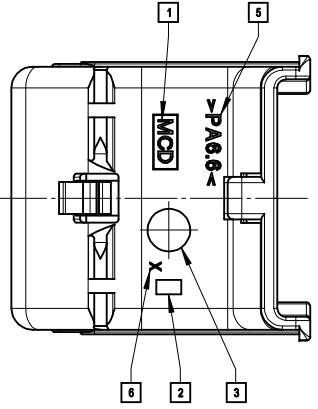


1:1

- MARKINGS:**
- 1 - Supplier Acronym: MCD
  - 2 - Revision Level
  - 3 - Datum Month/Year
  - 5 - Material
  - 8 - Preint Identification N°

- NOTES:**
- 1 -Material: >PA6.6< , Color: Black, Spec.: Heat Stabilized.
  - 2 -Delivered Product Weight: 6.000 g
  - 3 -Related Counterpart: Female Connector CMC 53 Ways.

INSPECTION BALLOON NUMBER LOG	
PER DRAWING REVISION: C	
LAST BALLOON NUMBER USED: 19	
ADDED BALLOON NUMBERS:	
REMOVED BALLOON NUMBERS:	



C	UPDATE ATTACHED LINE FOR DIM#19
B	- DELETE MARKING 4 - SUPPLIER ACRONYM MCD WAS MXG
A	FIRST RELEASE

GENERAL TOLERANCES (UNLESS SPECIFIED)		DIMENSION STYLE		SCALE	DESIGN UNITS	FIRST ANGLE PROJECTION
		MM ONLY		2:1	METRIC	
4 PLACES	± 0.1	mm	INCH	DRAWN BY	DATE	TITLE
3 PLACES	± 0.1			G. DESBRUERES	2008/04/22	WIRE CAP
2 PLACES	± 0.1			CHECKED BY	DATE	CMC 53W
1 PLACE	± 0.1			O. PLESSIS	2008/04/22	
0 PLACE	± 0.1			APPROVED BY	DATE	
				L. STICKEIR	2008/04/23	
ANGULAR ± 2 °		MATERIAL NO.		DOCUMENT NO.		SHEET NO.
DRAFT WHERE APPLICABLE MUST REMAIN WITHIN DIMENSIONS		0643211101		SD-64321-002		1 OF 1
SIZE A2		THIS DRAWING CONTAINS INFORMATION THAT IS PROPRIETARY TO MOLEX INCORPORATED AND SHOULD NOT BE USED WITHOUT WRITTEN PERMISSION				