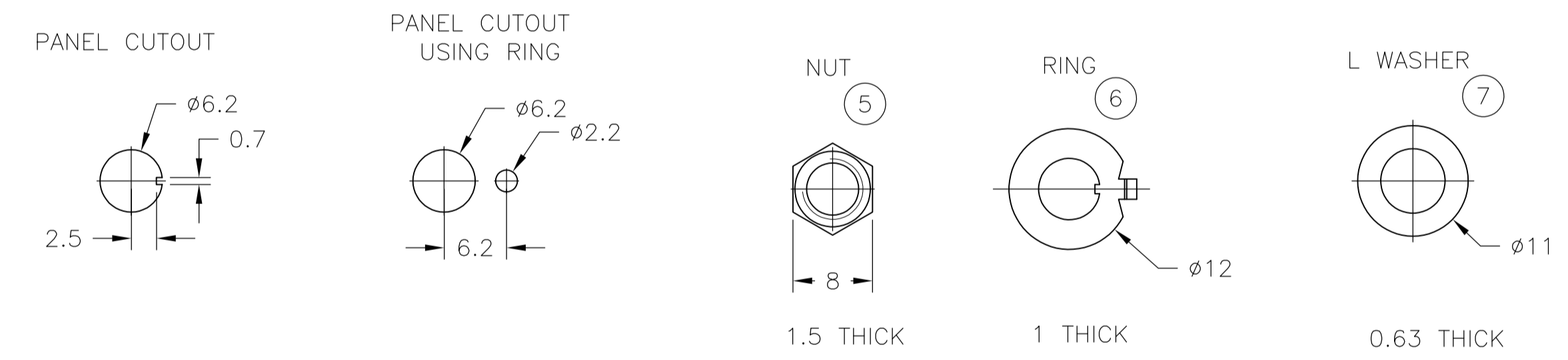
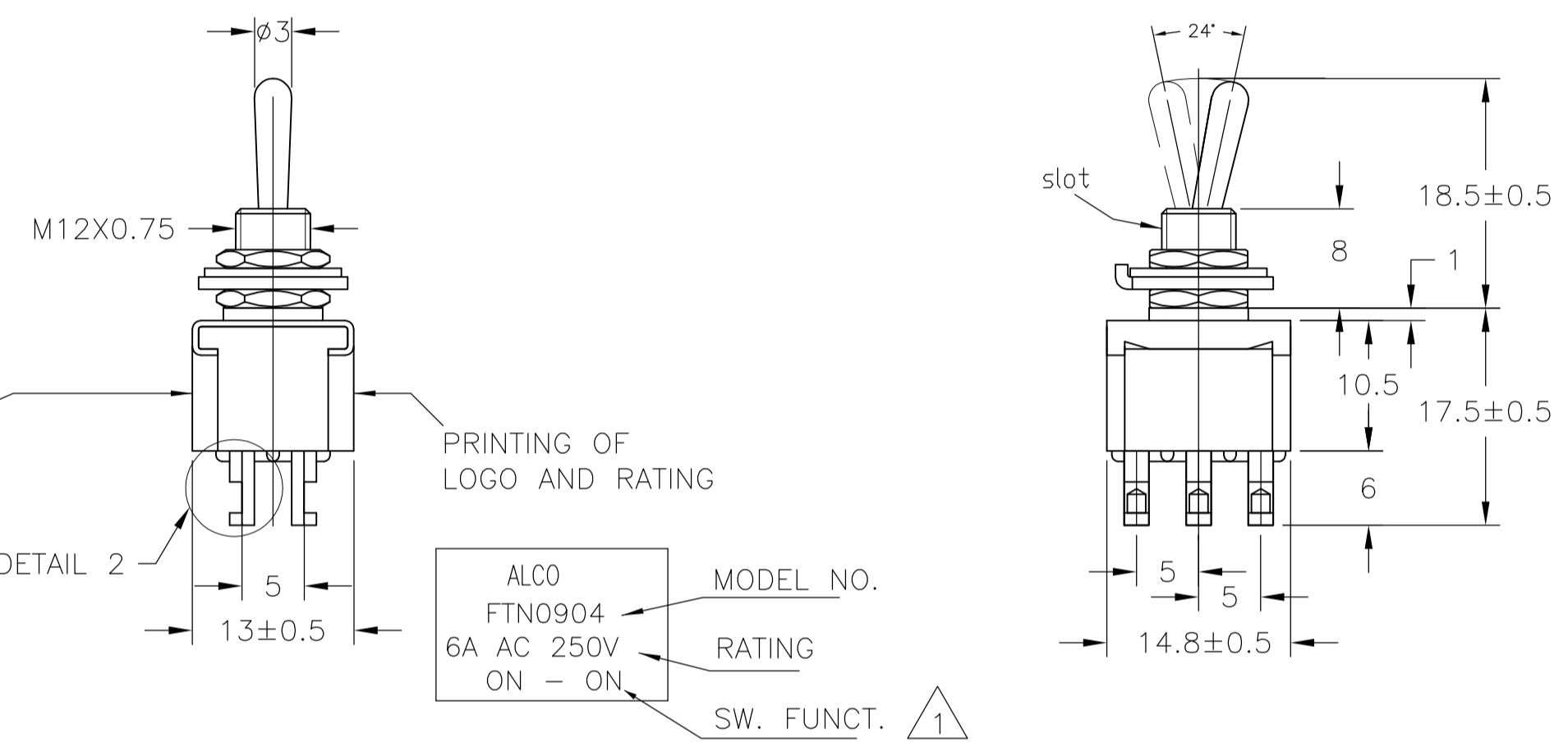


TE PN	PART	TERMINALS 1 AND 2 4 AND 5	TERMINALS 1 AND 2 5 AND 6	TERMINALS 2 AND 3 4 AND 5	TERMINALS 2 AND 3 5 AND 6
4-6437630-5	FTP0904	ON	OFF	ON	ON
4-6437630-2	FTN0904	ON	NONE	NONE	ON
4-6437630-4	FTR0904	ON	NONE	NONE	(ON)
4-6437630-6	FTP0904	ON	OFF	ON	ON
4-6437630-1	FTT0904	ON	OFF	ON	(ON)
4-6437630-3	FTS0904	(ON)	OFF	ON	(ON)
6-6437630-8	FTN09G04	ON	NONE	NONE	ON

(ON): MOMENTARY ACTION  
 OFF: MECHANICAL POSITION WITHOUT ELECTRICAL CONNECTION  
 NONE: NO MECHANICAL POSITION

DATE CODE PRINTING LAST DIGIT OF YEAR  
 A-L = JANUARY TO DECEMBER DAY



- 1 0.5VA NO SWITCH FUNCTION WILL BE MARKED BUT WILL BE MARKED GOLD CON
- 2 OPERATING TEMPERATURE -20°C TO +70°C
- 3 ALL MATERIALS AND FINISHES COMPLY WITH RoHS DIRECTIVE

CONTACT MATERIAL	COMMON	TE PN	PART	RATING	INITIAL CONTACT RESISTANCE	INSULATION RESISTANCE	DIELECTRIC STRENGTH	ENDURANCE
C3602BD Ep-Cu/Ni3,Au1b	C3602BD Ep-Cu/Ni3,Au1b	6-6437630-8	FTN09G04	20V AC/DC 0.4 VA MAX	MAX 10 MILLIOHMS AT DC 2~4V 0.1A	MIN 1000 M Ohms AT DC 500V	AC 1KV/1 Min (AC 1.2KV/1 SEC)	ELECTRICALLY 50,000 CYCLES AT 20 CYCLES/MIN (RATED LOAD RESISTIVE) MECHANICALLY 100,000 CYCLES AT 20 CYCLES/MIN
99.8% Silver + C3602BD Ep-Cu/Ni3,AuFb	C3602BD Ep-Cu/Ni3,AuFb	4-6437630-5 4-6437630-2 4-6437630-6 4-6437630-3	FTP0904 FTN0904 FTR0904 FTS0904	AC 125V 6A AC 250V 6A	MAX 10 MILLIOHMS AT DC 2~4V 1A	MIN 1000 M Ohms AT DC 500V	AC 1KV/1 Min (AC 1.2KV/1 SEC)	ELECTRICALLY 30,000 CYCLES AT 20 CYCLES/MIN (RATED LOAD RESISTIVE) MECHANICALLY 50,000 CYCLES AT 20 CYCLES/MIN
		4-6437630-4 4-6437630-1	FTR0904 FTT0904	AC 125V 6A AC 250V 6A	MAX 10 MILLIOHMS AT DC 2~4V 1A	MIN 1000 M Ohms AT DC 500V	AC 1KV/1 Min (AC 1.2KV/1 SEC)	ELECTRICALLY 30,000 CYCLES AT 20 CYCLES/MIN (RATED LOAD RESISTIVE) MECHANICALLY 50,000 CYCLES AT 20 CYCLES/MIN

MATERIALS CHART

OPTIONAL DESCRIPTION	MATERIAL/SURFACE	PART NAME	PART NO
	Ep-Fe/Cu2,Ni4b	SK-5	L WASHER 7
	Ep-Fe/Cu2,Ni3b	SPCC	RING 6
	Ep-Cu/Ni3b	C3602BD	NUT 5
	Ep-Cu/Ni3,Cr1b	C3602BD	ACTUATOR 4
	Ep-Cu/Ni3b	C3602BD	BUSHING 3
		SUS	FRAME 2
	POLYESTER RESIN	CASE	1

PART LIST

THIS DRAWING IS A CONTROLLED DOCUMENT.

DIMENSIONS: mm TOLERANCES UNLESS OTHERWISE SPECIFIED: 0.000 ±0.000 0.001 ±0.001 0.002 ±0.002 0.003 ±0.003 0.004 ±0.004 0.005 ±0.005 0.006 ±0.006 0.007 ±0.007 0.008 ±0.008 0.009 ±0.009 0.010 ±0.010 0.012 ±0.012 0.015 ±0.015 0.020 ±0.020 0.025 ±0.025 0.030 ±0.030 0.040 ±0.040 0.050 ±0.050 0.060 ±0.060 0.075 ±0.075 0.100 ±0.100 0.150 ±0.150 0.200 ±0.200 0.300 ±0.300 0.400 ±0.400 0.500 ±0.500 0.600 ±0.600 0.750 ±0.750 1.000 ±1.000 1.500 ±1.500 2.000 ±2.000 2.500 ±2.500 3.000 ±3.000 4.000 ±4.000 5.000 ±5.000 6.000 ±6.000 8.000 ±8.000 10.000 ±10.000 12.000 ±12.000 15.000 ±15.000 20.000 ±20.000 25.000 ±25.000 30.000 ±30.000 40.000 ±40.000 50.000 ±50.000 60.000 ±60.000 80.000 ±80.000 100.000 ±100.000	THIS DRAWING IS A CONTROLLED DOCUMENT. DIMENSIONS: mm TOLERANCES UNLESS OTHERWISE SPECIFIED: 0.000 ±0.000 0.001 ±0.001 0.002 ±0.002 0.003 ±0.003 0.004 ±0.004 0.005 ±0.005 0.006 ±0.006 0.007 ±0.007 0.008 ±0.008 0.009 ±0.009 0.010 ±0.010 0.012 ±0.012 0.015 ±0.015 0.020 ±0.020 0.025 ±0.025 0.030 ±0.030 0.040 ±0.040 0.050 ±0.050 0.060 ±0.060 0.075 ±0.075 0.100 ±0.100 0.150 ±0.150 0.200 ±0.200 0.300 ±0.300 0.400 ±0.400 0.500 ±0.500 0.600 ±0.600 0.750 ±0.750 1.000 ±1.000 1.500 ±1.500 2.000 ±2.000 2.500 ±2.500 3.000 ±3.000 4.000 ±4.000 5.000 ±5.000 6.000 ±6.000 8.000 ±8.000 10.000 ±10.000 12.000 ±12.000 15.000 ±15.000 20.000 ±20.000 25.000 ±25.000 30.000 ±30.000 40.000 ±40.000 50.000 ±50.000 60.000 ±60.000 80.000 ±80.000 100.000 ±100.000	RAGHAVENDRA 02AUG10 CHK MICHAEL WILBOURN 02AUG10 APVD MICHAEL WILBOURN 02AUG10 NAME PRODUCT SPEC APPLICATION SPEC WEIGHT CUSTOMER DRAWING	Tyco Electronics Corporation Harrisburg, PA 17105-3608 TOGGLE SWITCH F-SERIES DP STANDARD LEVER SIZE CASE CODE DRAWING NO. RESTRICTED TO A1 00779 C=1968511 SCALE 1:1 SHEET 1 OF 1 REV A1
--	--	--	---

# Mouser Electronics

Authorized Distributor

Click to View Pricing, Inventory, Delivery & Lifecycle Information:

[TE Connectivity:](#)

[FTR0904](#)