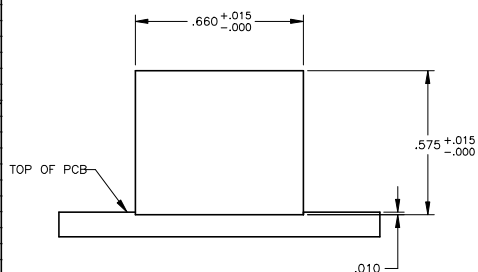
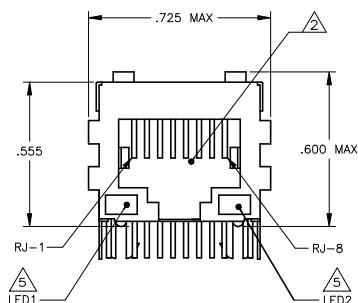
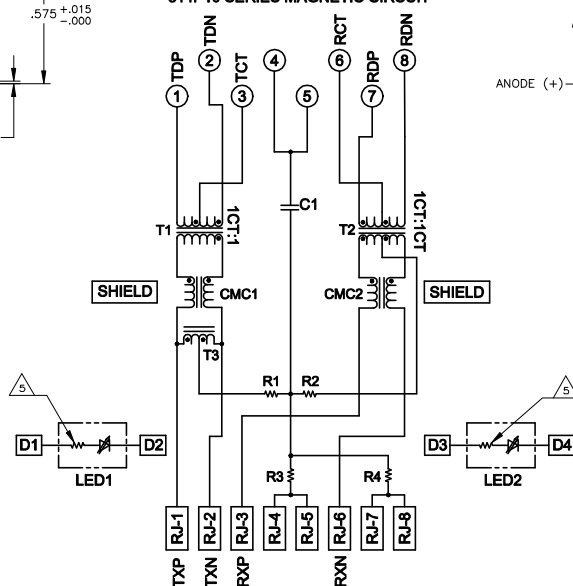


PRODUCT MAY BE PROTECTED BY ONE OR MORE OF THE FOLLOWING US PATENTS:
5736910 5939955 6425781 6428361 6554638 6840817 7123117
7429195 7717749 7808751 6217391 6149050 7924130

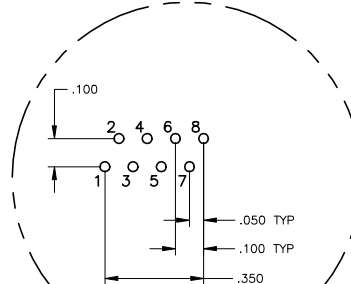
REVISIONS						
P	LYR	REV	DESCRIPTION	DATE	BY	AP
	F		EC-1411035 COMPANY LOGO CHANGE	23DEC2014	ST	T



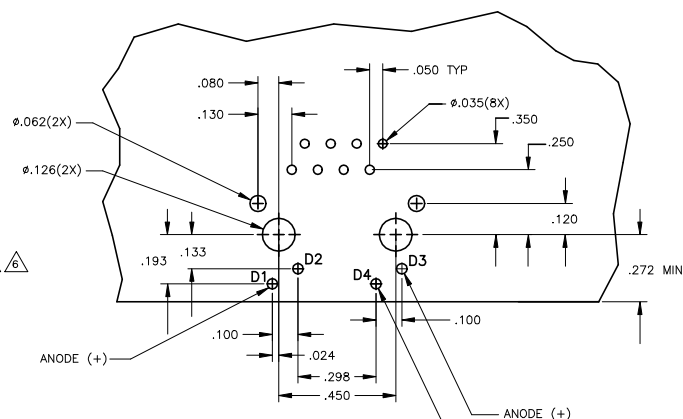
314P10 SERIES MAGNETIC CIRCUIT



C1=1000pF. 2kV CAPACITOR
R1-R4 = 75 OHMS. 1/16 W. RESISTORS





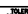


Pin Designations



Suggested PCB Layout (Component Side)

- 1 MATERIALS: - THERMOPLASTIC PET POLYESTER FLAMMABILITY RATING UL 94V-0.
- HOUSING - 010" THICK, C26800 BRASS PREPLATED WITH 30μINCH SEMI-BRIGHT NICKEL. SOLDER TABS POST DIPPED WITH 100μINCH MIN SAC SOLDER.
MOD JACK CONTACTS - 0.0157 x 0.018" PHOSPHOR BRONZE, 50μINCH MIN OVERALL NICKEL UNDERPLATE, WITH SELECT 50μINCH MIN HARD GOLD FINISH PLATE.
SOLDER TABS WITH 100μINCH MIN MATTE TIN AND/OR SAC SOLDER DIP.
LIGHT EMITTING DIODE(LED) - DIFFUSED EPOXY LENS, 020" x .020" CARBON STEEL WIREFRAME LEADS PRE-PLATED WITH 80μINCH SILVER OVER 40μINCH NICKEL UNDERPLATE OVER 40μINCH COPPER UNDERPLATE. POST-PLATED WITH 100μINCH MIN MATTE TIN AND/OR SAC SOLDER DIP OR PURE TIN SOLDER DIP.
- △ RJ45 JACK CAVITY CONFORMS TO FCC RULES AND REGULATIONS PART 68, SUB PART F.
- △ MAGNETICS
-IMPEDANCE: 100 OHMS
-TURNS RATIO (CHIP CABLE): TX = 11, RX = 11
-OPEN CIRCUIT INDUCTANCE (OCL): 350uH MIN @100kHz, 0.1VRMS,
8mADC BIAS FROM 0°C TO 70°C, TX AND RX
-PERFORMANCE @ 25°C:
INSERTION LOSS (IL): 1dB MAX FROM 0.5MHz TO 100MHz
RETURN LOSS (RL): 18dB MIN FROM 0.5MHz TO 30MHz
18-20LOG(I/30)dB MIN FROM 30.1MHz TO 60MHz
12dB MIN FROM 60.1MHz TO 80MHz
CROSSTALK ATTENUATION: 35dB MIN FROM 0.5MHz TO 40MHz
33-20LOG(I/50)dB MIN FROM 40.1MHz TO 100MHz
COMMON MODE REJECTION RATIO (CMRR): 30dB MIN FROM 0.5MHz TO 100MHz
-ISOLATION VOLTAGE:2250VDC (MAX) FOR 60 SECONDS WITH A RISE TIME OF 500V/SEC.
4. OPERATING TEMPERATURE: FROM 0°C TO -70°C.
- △ THE 250 OHM LED RESISTORS ARE OPTIONAL, PLEASE SEE CHART FOR PRESENCE OR ABSENCE OF LED RESISTORS. IF THE LED WITHOUT 250 OHM RESISTORS, LED IS DRIVEN WITH CONSTANT CURRENT AT APPROX 20mA.
LED COLOR: DOMINANT WAVELENGTH (AD): GREEN 568 nm TYP @ IF=20mA
FORWARD VOLTAGE (VF): GREEN 2.2V TYP @ IF=20mA
DOMINANT WAVELENGTH (AD): YELLOW 588 nm TYP @ IF=20mA
FORWARD VOLTAGE (VF): YELLOW 2.1V TYP @ IF=20mA
IF THE LED WITH 250 OHM RESISTORS,LED IS DRIVEN WITH 5V VOLTAGE AND THE MAX OPERATING CURRENT IS 20mA.
LED COLOR: DOMINANT WAVELENGTH (AD): GREEN 568 nm TYP @ VF=5V
FORWARD CURRENT (IF): GREEN 12 mA TYP @ VF=5V
DOMINANT WAVELENGTH (AD): YELLOW 588 nm TYP @ VF=5V
- △ INDICATED CONNECTIONS ARE FOR NIC CONFIGURATION. THE MAGNETICS ARE ASYMMETRICAL, AND DO NOT SUPPORT AUTO-MDI/MDIX.
- △ TRP CONNECTOR LOGO, PART NUMBER, DATE CODE, COUNTRY OF ORIGIN AND AGENCY APPROVAL MARKING IN APPROXIMATE LOCATION SHOWN.
8. THESE PARTS ARE RECOMMENDED FOR WAVE SOLDERING PROCESS,
PREHEAT TEMPERATURE IS 120°C TO 160°C, 120 SECONDS TO 180 SECONDS,
PEAK SOLDERING TEMPERATURE IS 260 °C MAX, 10 SECONDS MAX.
- △ OBSOLETE PARTS: OBSOLETE CIS STREAMLINING PER D.RENAUD /D.SINISI

9	OBSOLETE	GREEN	NO	YELLOW	NO	5-6605301-8
		GREEN	NO	GREEN	NO	5-6605301-7
		GREEN	YES	YELLOW	YES	5-6605301-1
		LED1	250 OHMS RESISTOR Δ 5	LED2	250 OHMS RESISTOR Δ 5	PART NUMBER

THIS DRAWING IS A CONTROLLED DOCUMENT.		RESISTOR (Δ)		RESISTOR (Δ)		RESISTOR (Δ)	
		GATTARDA - DOCK		 trp a longman brand		DONGGUAN CHINA	
DIMENSIONS		D 1.40 ± 0.05		D 1.40 ± 0.05		D 1.40 ± 0.05	
RICHES		RICHES		RICHES		RICHES	
							
1.40 ± 0.05 1.40 ± 0.05 1.40 ± 0.05 1.40 ± 0.05		1.40 ± 0.05 1.40 ± 0.05 1.40 ± 0.05 1.40 ± 0.05		1.40 ± 0.05 1.40 ± 0.05 1.40 ± 0.05 1.40 ± 0.05		1.40 ± 0.05 1.40 ± 0.05 1.40 ± 0.05 1.40 ± 0.05	
PRODUCT SPEC		APPLICATION SPEC		MAGNAC		1X1 314P10 10/100 TAB DOWN W/ LED	
108-2100		-		SINGLE NON-POE		SIZE A1 ONE CODE C-66053.01 ORDER NO. 1 SHEET 1 of 1	
		CUSTOMER DRAWING					

Mouser Electronics

Authorized Distributor

Click to View Pricing, Inventory, Delivery & Lifecycle Information:

Bel:

[5-6605301-1](#)