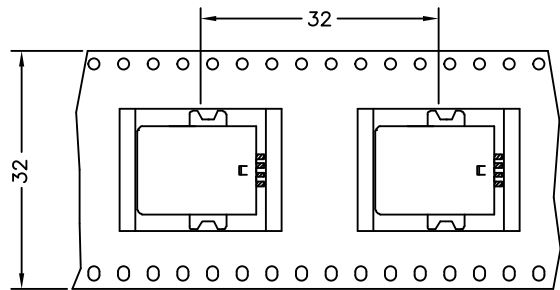
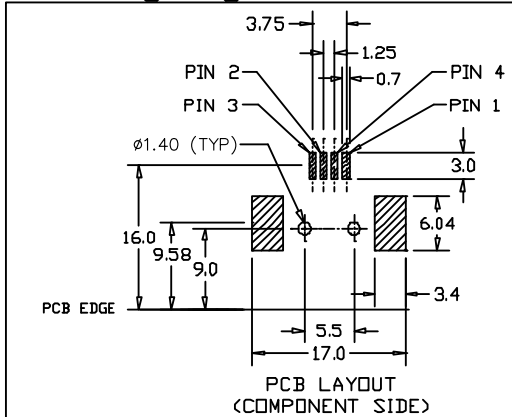
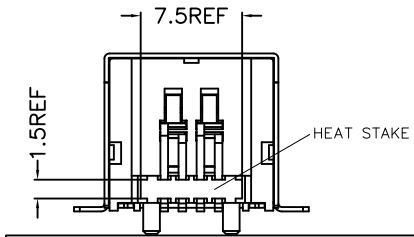
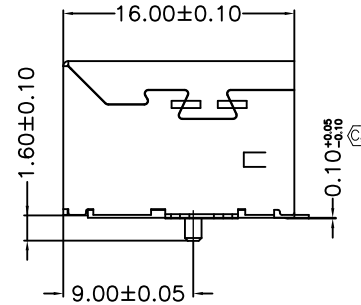
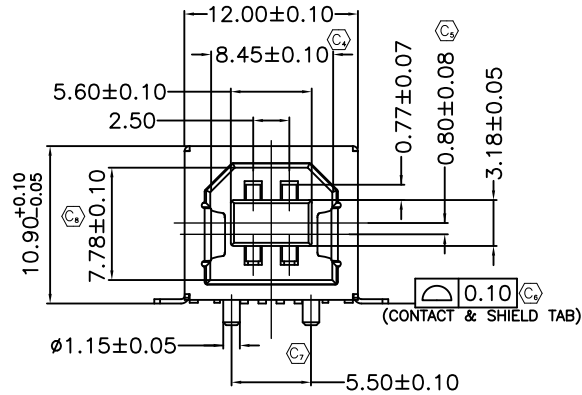
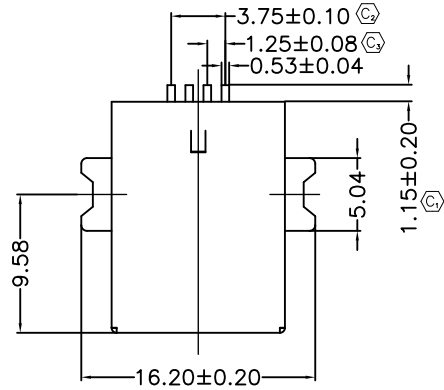
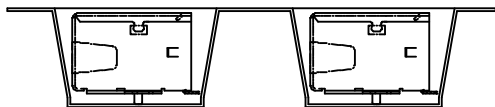


REVISION U

DO NOT SCALE FROM THIS PRINT



UNREEL DIRECTION OF UNREELING —
POCKET NOT DETAILED



NOTES:

1. Ⓢ REPRESENTS CRITICAL DIMENSION.
2. NOTE DELETED.
3. SHIELD CHANGE TO CONTINUOUS PLATING

USB-B-S-X-X-SM-X-XX

TYPE
-B

CONFIGURATION
-S: SINGLE

PLATING

- F: 1μ" FLASH GOLD IN CONTACT AREA, MATTE TIN ON TAIL
- S: 30μ" SELECTIVE GOLD IN CONTACT AREA, MATTE TIN ON TAIL

OPTIONS

- TR: TAPE AND REEL (LEAVE BLANK FOR TRAY PACKAGING)

E & I OPTIONS

- R: ROHS COMPLIANT-LEAD FREE WITH HIGH TEMP INSULATOR

RA TERMINATION
-SM: SURFACE MOUNT

COLOR

- B: BLACK
- W: WHITE

UNLESS OTHERWISE SPECIFIED, DIMENSIONS ARE MILLIMETERS. TOLERANCES ARE:

DECIMALS ANGLES

DO NOT SCALE DRAWING
INSULATOR: PA9T (RATED UL94V-0)
CONTACT: PHOS BRONZE
SHELL: STEEL/NICKEL PLATED

MAX FLASH ALLOWED: .051
MAX GATE VESTIGE: .051

F:\DVG\EXISPROD\ASSEMBLY\0\USB\

PROPRIETARY NOTE

THIS DOCUMENT CONTAINS INFORMATION CONFIDENTIAL AND PROPRIETARY TO SAMTEC INC. AND SHALL NOT BE REPRODUCED OR TRANSFERRED TO OTHER DOCUMENTS OR DISCLOSED TO OTHERS OR USED FOR ANY PURPOSE OTHER THAN THAT FOR WHICH IT WAS OBTAINED WITHOUT THE EXPRESSED WRITTEN CONSENT OF SAMTEC INC.

SHEET SCALE: 1:2

samtec

520 PARK EAST BLVD. NEW ALBANY, IN 47150
(812) 944-6733 P.O. BOX 1147 TWX: 810-540-4085

DESCRIPTION:
USB TYPE B RIGHT ANGLE SURFACE MOUNT

DWG. NO.
USB-B-S-X-X-SM-X-XX

BY: J. Riley 02/06/04 SHEET 1 OF 1

CODE: 55322