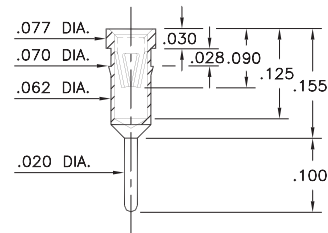


PIN RECEPTACLES

FOR .022" - .034" DIAMETER PINS AND .025" SQUARE PINS

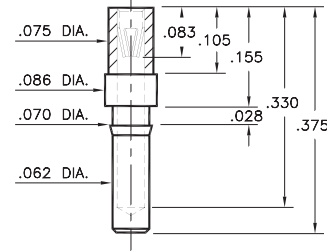
9808

9808-0-15-XX-16-XX-04-0
Press-fit in .067 mounting hole



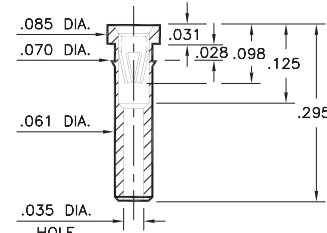
9101

9101-0-15-XX-16-XX-10-0
Press-fit in .067 mounting hole



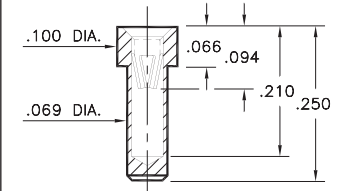
5650

5650-0-19-XX-16-XX-10-0
Press-fit in .067 mounting hole



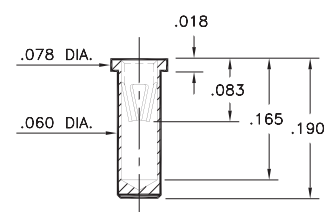
8679

8679-0-15-XX-16-XX-10-0
Solder mount in .071 min. mounting hole
Also available on 24mm wide carrier tape:
800 parts per 13" reel
See page 194.8 for Tape & Reel details



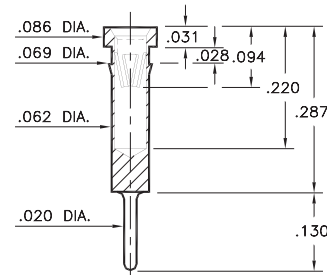
6021

6021-0-15-XX-16-XX-10-0
Solder mount in .062 min. mounting hole
Also available on 24mm wide carrier tape:
1,500 parts per 13" reel
See page 194.8 for Tape & Reel details



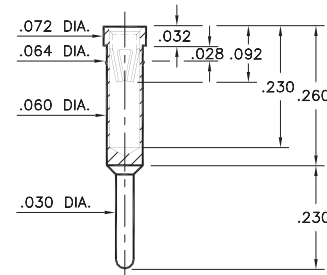
1873

1873-0-15-XX-16-XX-04-0
Press-fit in .066 mounting hole



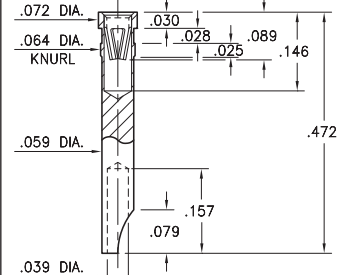
8827

8827-0-15-XX-16-XX-04-0
Press-fit in .061 mounting hole



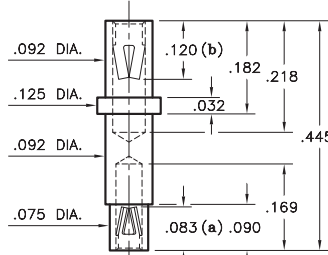
5070

5070-0-18-XX-16-XX-10-0
Press-fit in .061 mounting hole



7620

7620-0-34-XX-16-XX-10-0
Double Ended Receptacle. See chart
for Contact number & acceptance ranges



Contact Number	Acceptance Range
(a) #16	.022 - .034 and .025 □
(b) #34	.032 - .046

(Data on Page 258)

SPECIFICATIONS:

Shell Material: Brass Alloy 360, 1/2 Hard

Contact Material: Beryllium Copper Alloy 172, HT

Dimensions: Inches

Tolerances On: Lengths: ±.005

Diameters: ±.002

Angles: ± 2°



ORDER CODE: XXXX - X - XX - XX - 16 - XX - 10 - 0

BASIC PART #

SPECIFY SHELL FINISH:

- 01 200 μ" TIN/LEAD OVER NICKEL
- ◆ 80 200 μ" TIN OVER NICKEL (RoHS)
- ◆ 15 10 μ" GOLD OVER NICKEL (RoHS)

SPECIFY CONTACT FINISH:

- 01 200 μ" TIN/LEAD OVER NICKEL
- ◆ 80 200 μ" TIN OVER NICKEL (RoHS)
- ◆ 27 30 μ" GOLD OVER NICKEL (RoHS)

SELECT CONTACT:

#16 CONTACT (DATA ON PAGE 256)

(For alternate contact choices, see group D on page 248)



Mouser Electronics

Authorized Distributor

Click to View Pricing, Inventory, Delivery & Lifecycle Information:

Mill-Max:

[8679-0-15-01-16-27-10-0](#) [6021-0-15-01-16-27-10-0](#) [1873-0-15-01-16-01-04-0](#) [1873-0-15-01-16-27-04-0](#) [6021-0-15-80-16-27-10-0](#) [1873-0-15-15-16-27-04-0](#) [8679-0-15-15-16-27-10-0](#) [9101-0-15-00-00-00-10-0](#) [6021-0-15-00-00-00-10-0](#) [5650-0-19-00-00-00-10-0](#) [8679-0-15-00-00-00-10-0](#) [9808-0-15-00-00-00-04-0](#) [5650-0-19-01-16-14-10-0](#) [1873-0-15-01-16-14-04-0](#) [1873-0-15-80-16-14-04-0](#) [5650-0-19-80-16-14-10-0](#) [8679-0-15-80-16-14-10-0](#) [9101-0-15-80-16-14-10-0](#) [9101-0-15-01-16-14-10-0](#) [8679-0-15-01-16-14-10-0](#) [6021-0-15-80-16-14-10-0](#) [9808-0-15-80-16-14-04-0](#) [8827-0-15-01-16-01-04-0](#) [9808-0-15-01-16-14-04-0](#) [8827-0-15-01-16-14-04-0](#) [8827-0-15-80-16-14-04-0](#) [6021-0-15-01-16-14-10-0](#) [8827-0-15-80-16-80-04-0](#) [8827-0-15-80-16-27-04-0](#) [8827-0-15-01-16-27-04-0](#)