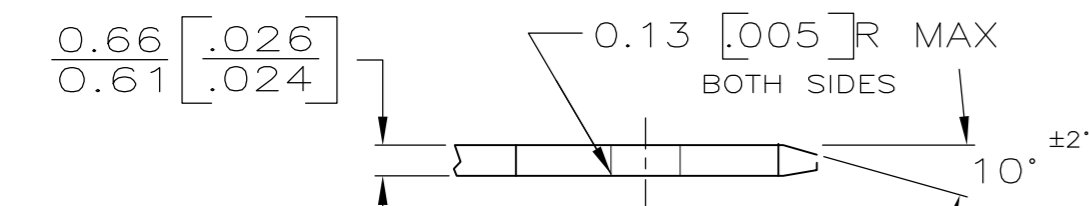
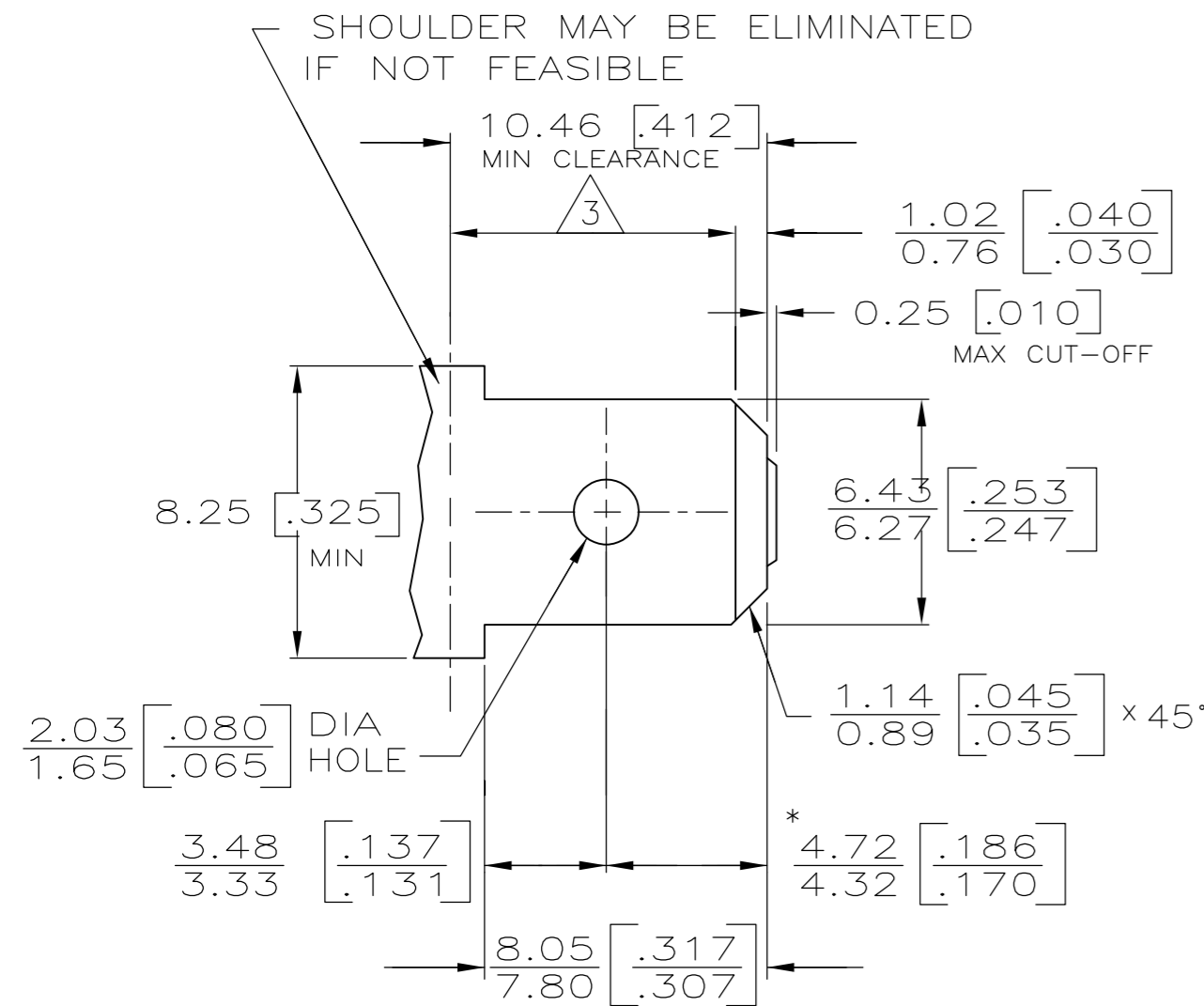


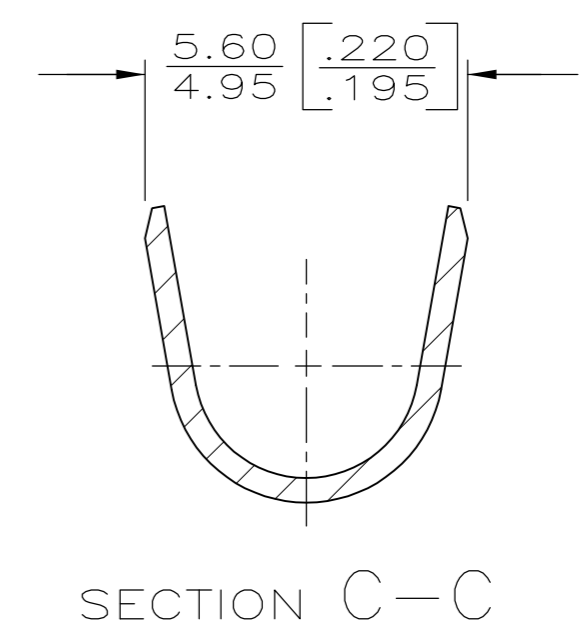
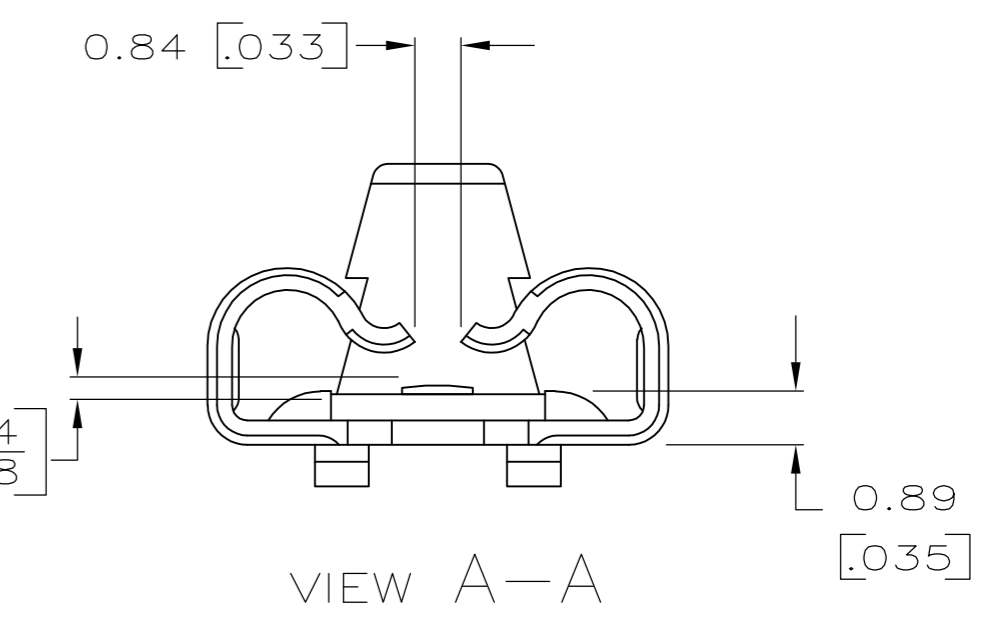
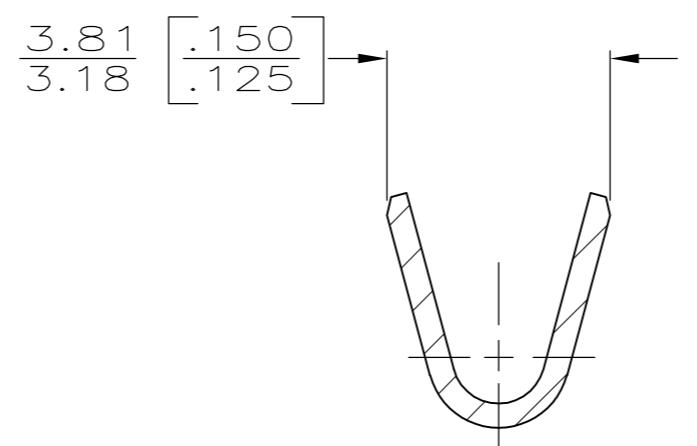
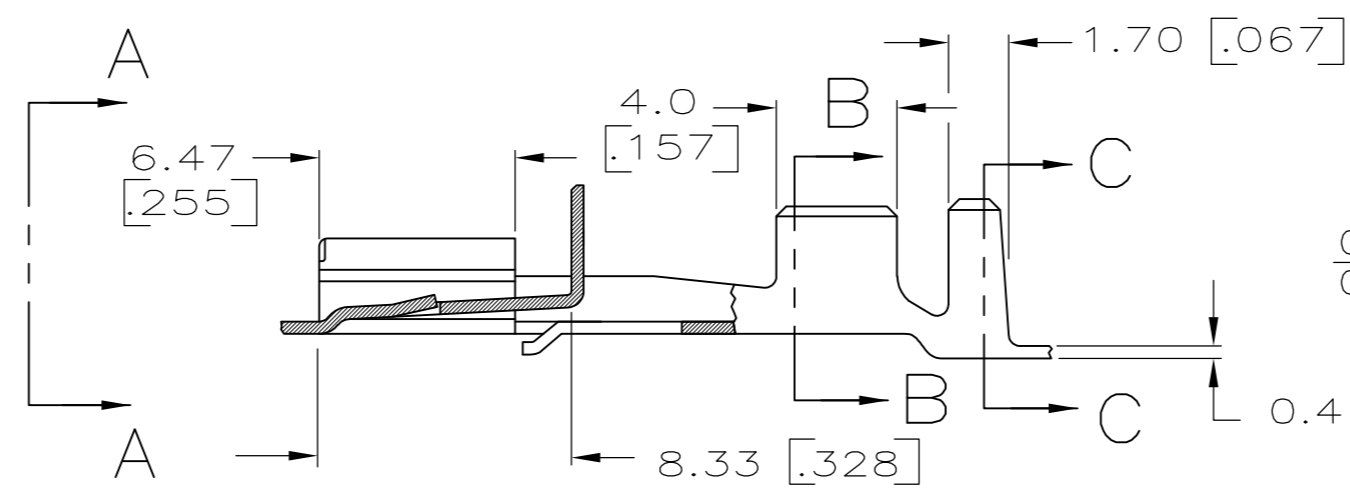
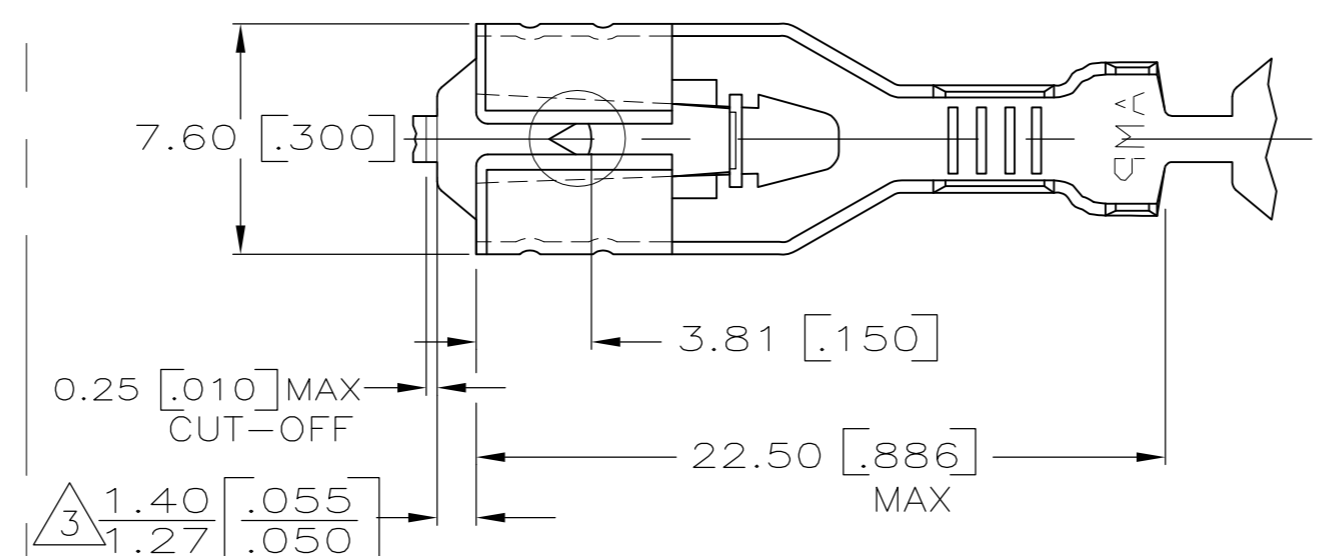
THIS DRAWING IS UNPUBLISHED. RELEASED FOR PUBLICATION  
 © COPYRIGHT - By - ALL RIGHTS RESERVED.

LOC	DIST	REVISIONS			
P	LTR	DESCRIPTION	DATE	DWN	APVD
AF	50				
		D	REVISED PER ECR-12-013486	10JAN13	KH KR

# SUGGESTED MATING TAB



- 1 MATL: 1/2H BRASS OR NICKEL PL STEEL.
- 2 NO BURRS PERMISSIBLE AT HOLE.
- 3 MUST BE FLAT WITHIN 0.076 [.003] OVER THIS LENGTH.
- 4 TIN PLATING IS REQUIRED ON BRASS WHEN TERMINAL TEMP. IS OVER 225°F
- 5 HOLE MUST BE SYMMETRICAL ABOUT TAB Q WITHIN 0.076 [.003]
- \* TO BE USED ONLY WHEN SHOULDER IS ELIMINATED.



2 CONTINUOUS STRIP ON REELS.

3 THE 1.40 [.055] / 1.27 [.050] DIMENSION MUST BE MAINTAINED BY THE APPLICATOR CUT-OFF TO ENSURE THE PROPER LOCKING FUNCTION OF THE RECEPTACLE.

2.29-3.94 [.090-.155] DIA	[#18-#14] AWG	63809-1
INSULATION RANGE	WIRE SIZE	PART NO.

THIS DRAWING IS A CONTROLLED DOCUMENT.		DWN	JR RUTH	9/27/94	 TE Connectivity
DIMENSIONS: mm [INCHES]		CHK	MS FEHER	9/27/94	
TOLERANCES UNLESS OTHERWISE SPECIFIED:		APVD	R KUZO	9/27/94	
0 PLC ± - 1 PLC ± - 2 PLC ± 0.25 [.010] 3 PLC ± - 4 PLC ± - ANGLES ± -		PRODUCT SPEC			
MATERIAL	BRASS	FINISH	TIN PLATE	APPLICATION SPEC	114-2074
CUSTOMER DRAWING		WEIGHT	-	SIZE	A2
		CAGE CODE		00779	DRAWING NO
		SCALE		5:1	SHEET
		SHEET		1 of 1	REV
		REV		D	

# Mouser Electronics

Authorized Distributor

Click to View Pricing, Inventory, Delivery & Lifecycle Information:

[TE Connectivity:](#)

[63809-1](#)