

D

C

B

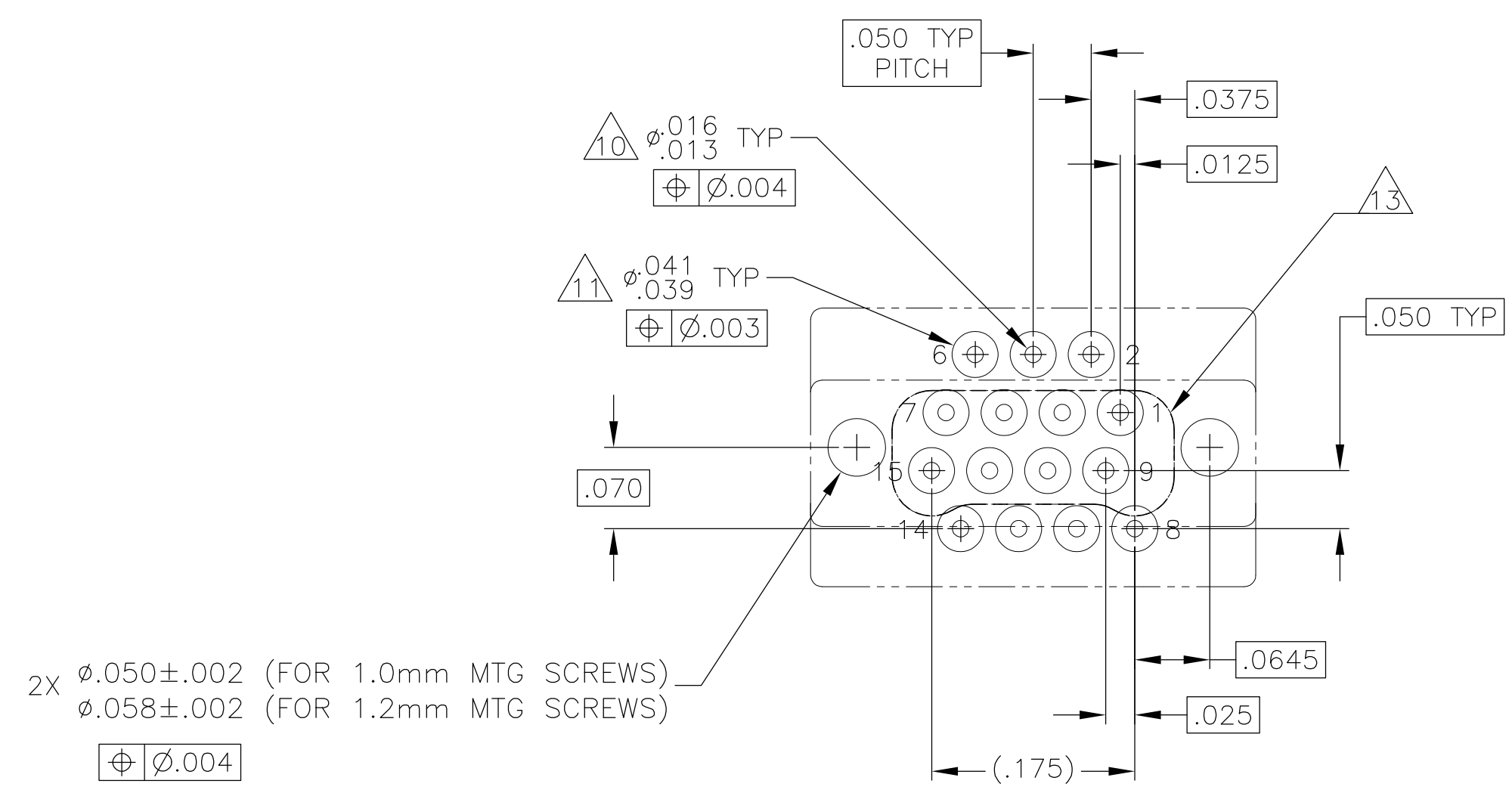
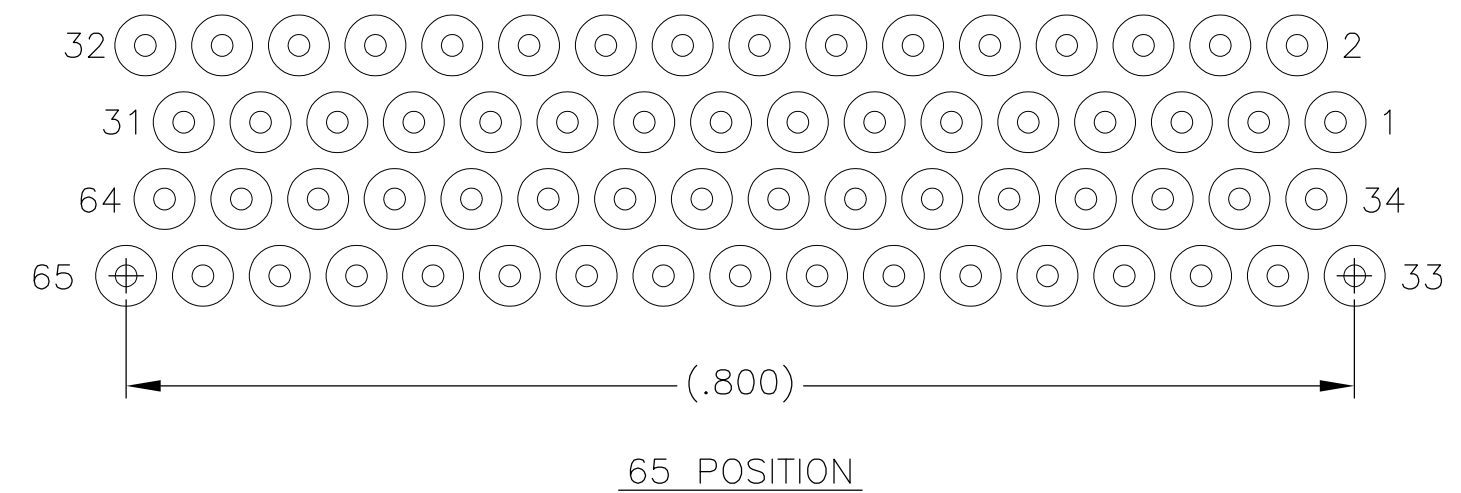
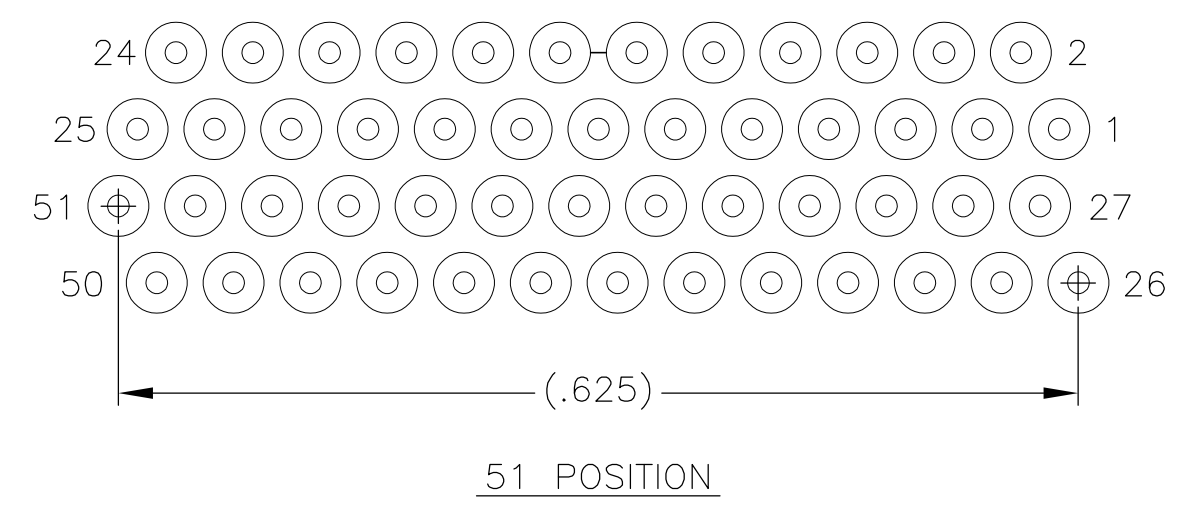
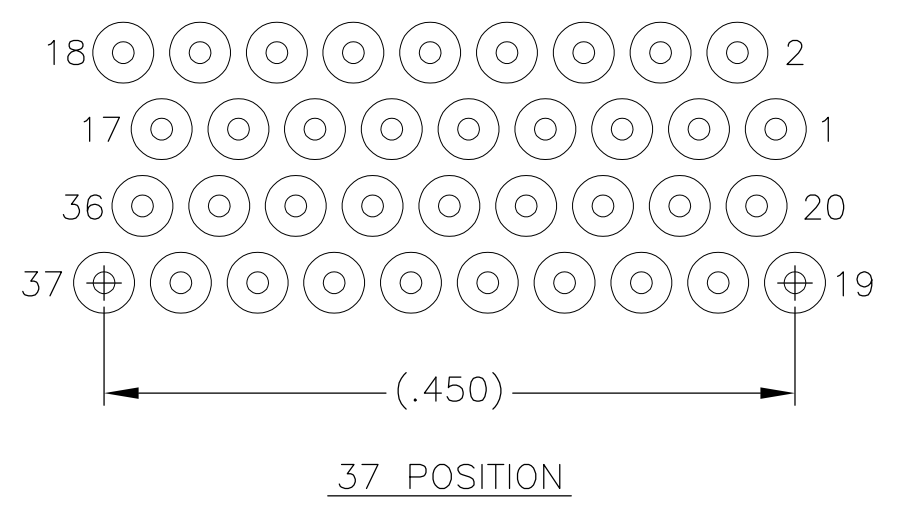
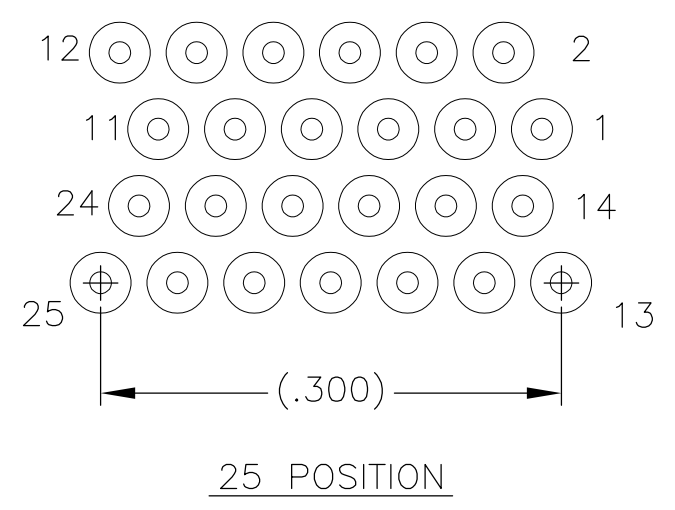
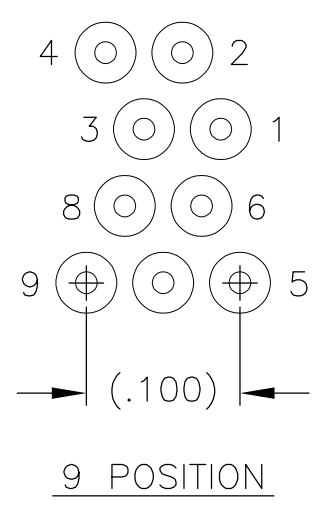
A

D

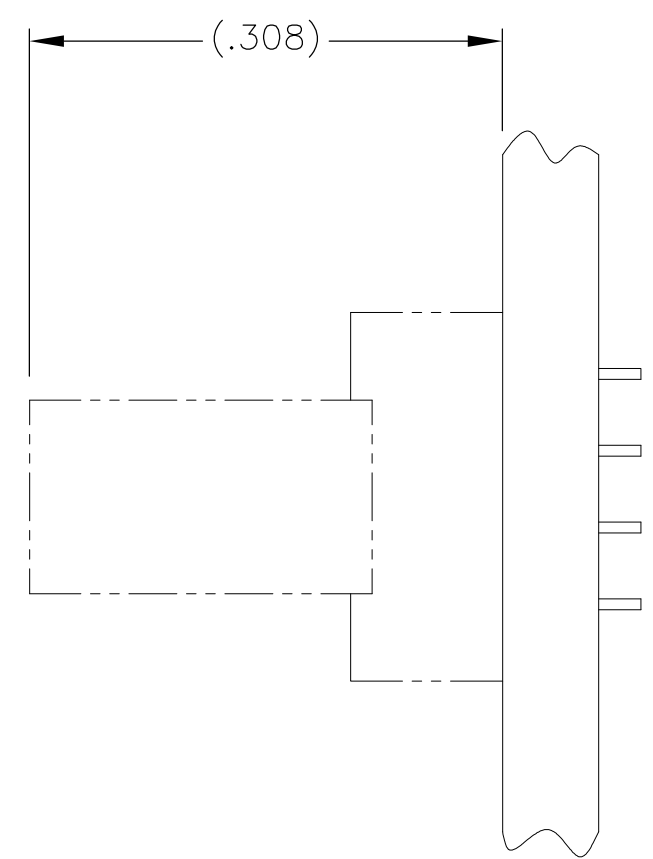
C

B

A



TYPICAL PCB LAYOUT
SIZE 15 SHOWN FOR REFERENCE 9



9. POSITIONAL TOLERANCES FOR BASIC DIMENSIONED FEATURES ARE RELATIVE TO FIDUCIALS OR SOME SIMILAR DATUM REFERENCES DEFINED BY PCB DESIGNER.
10. PLATED THROUGH HOLES
11. SOLDER PADS
12. ALL THROUGH HOLE LAYOUTS ARE AS VIEWED FROM TOP OF PCB.
13. CONNECTOR ORIENTATION

THIS DRAWING IS A CONTROLLED DOCUMENT.

DIMENSIONS:
INCHES

MATERIAL
SEE NOTES

SEE NOTES

0 PLC ± -

1 PLC ± -

2 PLC ± .010

3 PLC ± .005

4 PLC ± -

ANGLES ± 1

FINISH

TOLERANCES UNLESS OTHERWISE SPECIFIED:

SEE NOTES

DWN 27 JUN 00
D. RYAN

CHK 15 AUG 00
M. STORRY

APVD -

PRODUCT SPEC -

APPLICATION SPEC -

WEIGHT -

CUSTOMER DRAWING

TE Connectivity

RECEPTACLE ASSEMBLY, VERTICAL MOUNT, THROUGH HOLE, 2 TO 4 ROW, .050 SPACING, PLASTIC OR METAL

SIZE A2

CAGE CODE 0JPN9

DRAWING NO C=1589488

RESTRICTED TO -

SCALE 8:1

SHEET 2 of 2

REV S1

Mouser Electronics

Authorized Distributor

Click to View Pricing, Inventory, Delivery & Lifecycle Information:

[TE Connectivity:](#)

[STM025M5CN](#)