
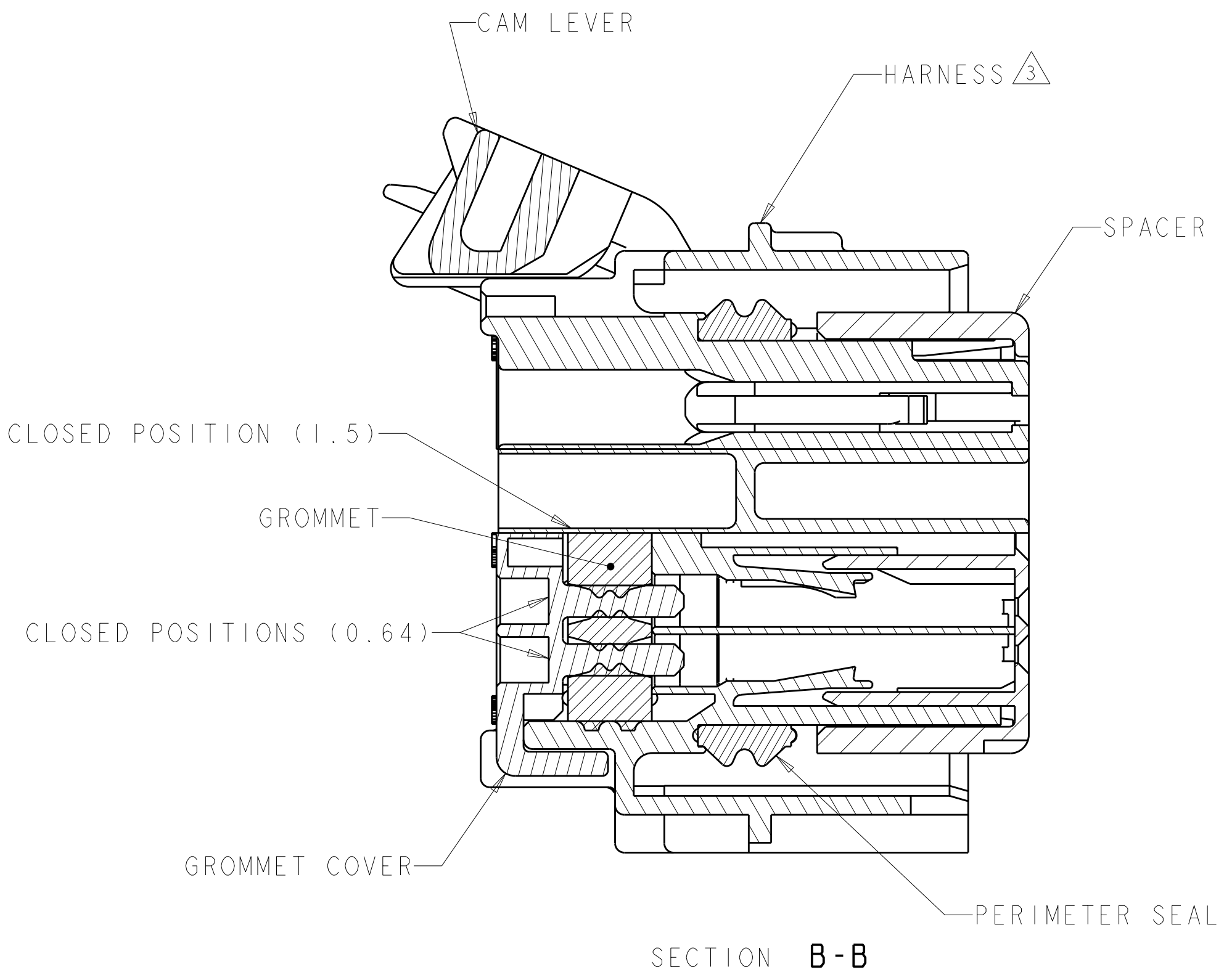
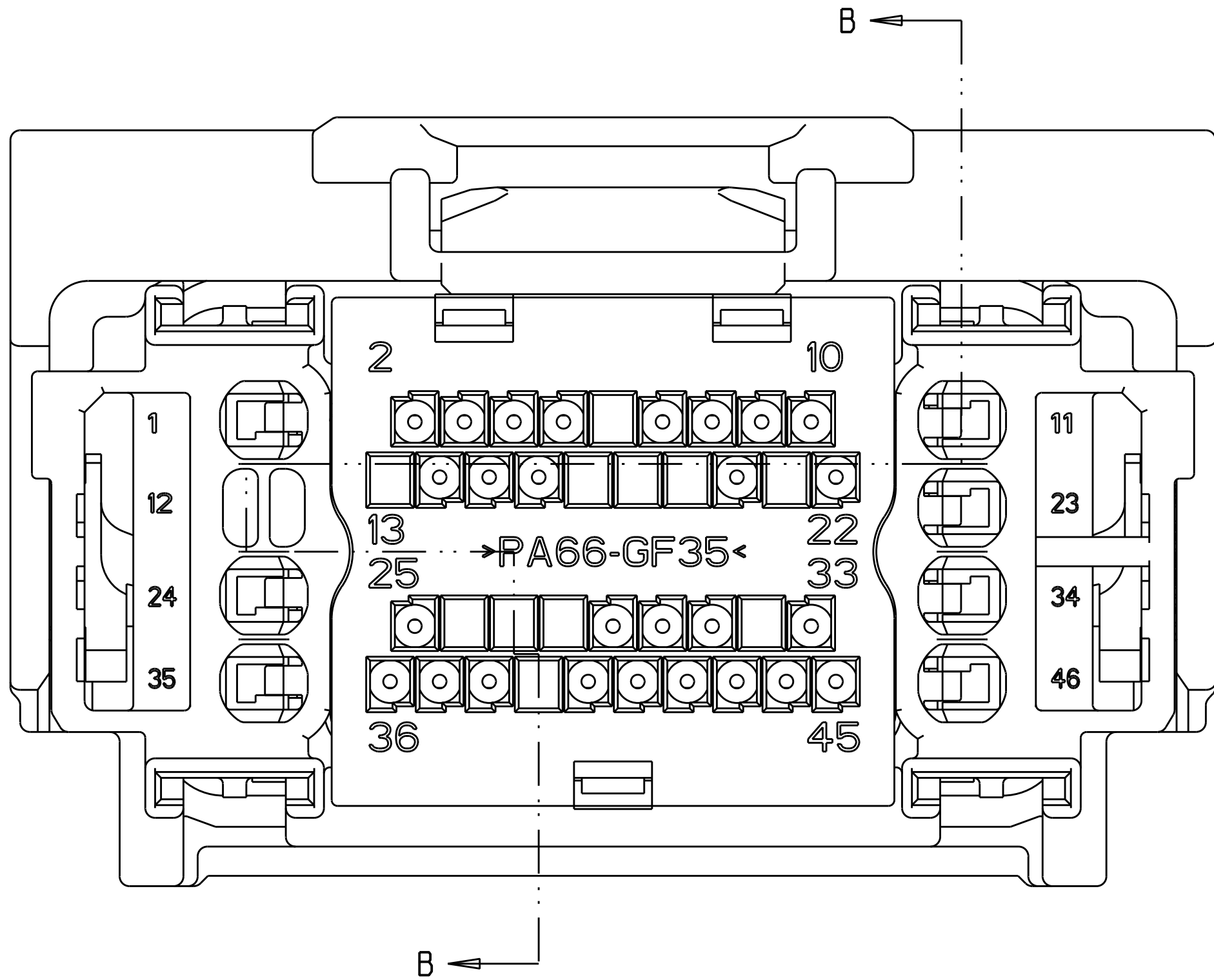
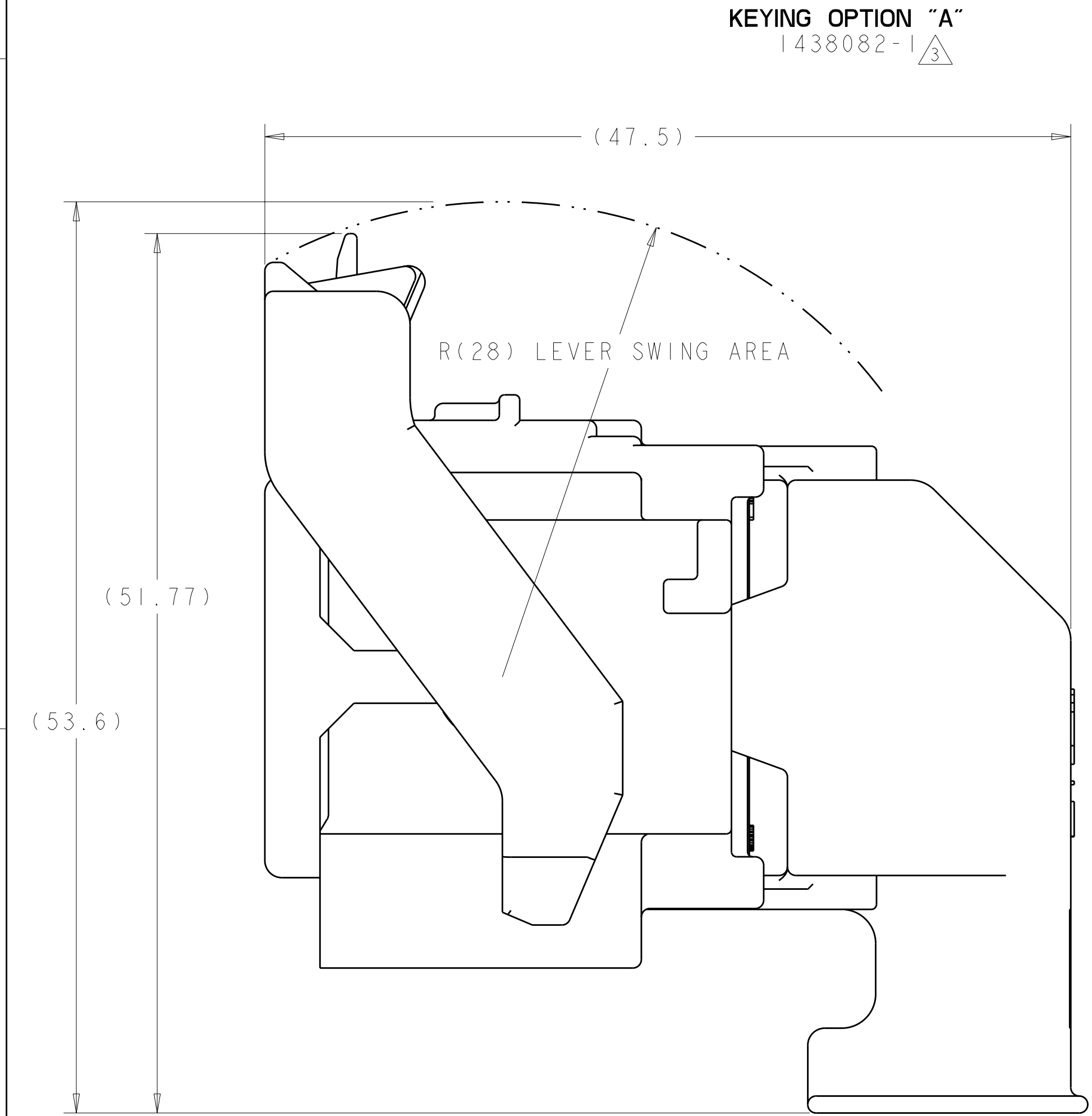


SCALE 1:1

KEYING OPTION "B"
1438082-2 




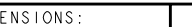
△ MATERIAL:
HARNES - 35% GLASS FILLED PA66, BLACK
ALT MAT'L: HARNES - 30% GLASS FILLED sPS, BLACK
SPACER - 40% GLASS FILLED PPS+PA66, RED
ALT MAT'L: 30% GLASS FILLED sPS, RED
ALT MAT'L: 35% GLASS FILLED PA66, RED
COVER - 35% GLASS FILLED PA66, BLACK
ALT MAT'L: COVER - 30% GLASS FILLED LCP, BLACK
CAM LEVER - 35% GLASS FILLED NYLON, GRAY
GROMMET - SILICONE, BROWN
PERIMETER SEAL - SILICONE, GREEN

2. CAM LEVER AND SPACER ARE SHIPPED IN PRE-LATCH POSITION.


③ SEE PINOUT CHART ON SHEETS 2, 3 AND 4 FOR CLOSED CIRCUIT CONFIGURATIONS.

④ CAVITIES WITH A NUMERIC SYMBOL INDICATES CLOSED TERMINAL LOCATIONS.
BLANK CAVITIES INDICATE OPEN TERMINAL HOLE LOCATIONS.

SHOWN WITH CAM LEVER AND SPACER
IN LOADED POSITION WITH
OPTIONAL WIRESHIELD

<small>1. THIS DRAWING IS THE PROPERTY OF TYCO ELECTRONICS CORPORATION. IT IS TO BE USED FOR THE MANUFACTURE OF THE PARTS SPECIFIED HEREON. IT IS NOT TO BE REPRODUCED OR COPIED FOR ANY OTHER PURPOSE WITHOUT THE WRITTEN PERMISSION OF TYCO ELECTRONICS CORPORATION.</small>		<small>DWN</small> 01AUG2003		 Tyco Electronics		Tyco Electronics Harrisburg, PA 17105-3608	
<small>DIMENSIONS:</small> mm		<small>TOLERANCES UNLESS OTHERWISE SPECIFIED:</small> 0 P L C ± .3 1 P L C ± .3 2 P L C ± .10 3 P L C ± .3 4 P L C ± .3 ANGLE ± 30°		<small>CUR</small> 01AUG2003		<small>NAME</small> 46 WAY PCM CONNECTOR HARNESS ASSEMBLY	
		<small>APPR</small> 01AUG2003		<small>PRODUCT SPEC</small> -		<small>SIZE</small> A	
<small>MATERIAL</small> SEE TABLE		<small>FINISH</small> SEE TABLE		<small>APPLICATION SPEC</small> -		<small>CAGE CODE</small> 00779	
				<small>WEIGHT</small> -		<small>DRAWING NO</small> C-1438082	
				<small>CUSTOMER DRAWING</small> -		<small>RESTRICTED TO</small> -	
				<small>SCALE</small> 4:1		<small>SHEET</small> 1 OF 5	
				<small>REVISION</small> 1		<small>REVISION</small> 1	

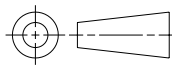
LOC	DIST	REVISIONS					
FX	00	P	LTR	DESCRIPTION	DATE	DWN	APVD
		-		SEE SHEET 1	-	-	-

		44							35		32							22								12		9	7	6				1	6-1438735-7	2LIT-14A464-SD-086																
		44							35		32															12		9	7	6				1	6-1438735-3	2LIT-14A464-SD-085																
									35																											6-1438735-2	2LIT-14A464-SD-084															
			43	42		40	39		37				29					20	18			15	14		11	10	9	8	7			4	3	1	6-1438735-1	2LIT-14A464-SD-083																
45		43						38	36			31					25	24						18	17	16		14	12				7	6		2	1	5-1438735-0	2LIT-14A464-SD-082													
45		43						38	36			31					25	24								16	14	12				7	6			2	1	4-1438735-9	2LIT-14A464-SD-081													
45		43						38	36			32	31				25	24		21		19	18	17	16		14	12				7	6			1	4-1438735-8	2LIT-14A464-SD-080														
45		43						39	38	37	36			31			25	24						18	17	16		14	13	12			9	7	6		2	1	4-1438735-7	2LIT-14A464-SD-079												
				42																20		18					13	11	10							2	1	3-1438735-8	2LIT-14A464-SD-078													
				42																20		18					13	11	10								1	3-1438735-7	2LIT-14A464-SD-077													
45		43						39	38	37	36			31			25	24		21	20	19	18	17			14	13	12			9					2	1	3-1438735-6	2LIT-14A464-SD-076												
45		43							38	36			31				25	24		21	20	19	18	17			14	12									2	1	3-1438735-5	2LIT-14A464-SD-075												
			43	42		40	39		37				29							20		18			15	14		11	10	9	8	7			4	3	2	1	3-1438735-3	2LIT-14A464-SD-074												
45		43						39	38	37	36			31			25	24				20	19	18	17			14	13	12			9					2	1	3-1438735-2	2LIT-14A464-SD-073											
45		43							38	36			31				25	24		21	20	19	18	17	16		14	12				7					2	1	3-1438735-1	2LIT-14A464-SD-072												
45		43						39	38	37	36			31			25	24		21	20	19	18	17	16		14	13	12			9	7					2	1	3-1438735-0	2LIT-14A464-SD-071											
45		43							38	36			31				25	24		21	20	19			16		14	12				7						2	1	2-1438735-9	2LIT-14A464-SD-070											
45		43						39	38	37	36			31			25	24		21	20	19			16		14	13	12			9	7					2	1	2-1438735-8	2LIT-14A464-SD-069											
45		43							38	36			31				25	24				20	19	18	17			14	12									2	1	2-1438735-6	2LIT-14A464-SD-068											
											33																	13												2	1	2-1438735-5	2LIT-14A464-SD-067									
45	44	43	42		40			38	37	36		33	31					24	22	21	20		18	17	16	15					9	8						2	1	2-1438735-4	2LIT-14A464-SD-066											
		43										31		29									18									8							2	1	2-1438735-1	2LIT-14A464-SD-065										
45		43						38		36	35		31				25	24		21					16		14	12				7	6						2	1	2-1438735-0	2LIT-14A464-SD-064										
45		43						39	38	37	36	35		31			25	24						18	17	16		14	13	12			9	7	6					2	1	1-1438735-9	2LIT-14A464-SD-063									
45		43							38		36	35		32	31			25	24		21		19	18	17	16		14	12				7	6					1	1-1438735-8	2LIT-14A464-SD-062											
45		43							38		36	35		31			25	24								16		14	12				7	6					2	1	1-1438735-7	2LIT-14A464-SD-061										
45		43							38		36	35		31			25	24		21		19			16		14	12				7	6					2	1	1-1438735-6	2LIT-14A464-SD-060											
45		43							38		36	35		31			25	24						18	17	16		14	12				7	6					2	1	1-1438735-5	2LIT-14A464-SD-059										
45		43						39	38	37	36	35		31			25	24		21		19	18	17	16		14	13	12			9	7	6				2	1	1-1438735-4	2LIT-14A464-SD-058											
45		43							38		36	35		31			25	24		21		19	18	17	16		14	12				7	6					2	1	1-1438735-3	2LIT-14A464-SD-057											
				42						37										20		18				15	14		11	10	9	8	7			4	3	2	1	1-1438735-2	2LIT-14A464-SD-056											
45		43									36	35		31				24		21		19			16		14	12					7	6					1	1-1438735-1	2LIT-14A464-SD-055											
									35							27																						3			1-1438735-0	2LIT-14A464-SD-054										
			43									31		29											18							9	8						2		1438735-9	2LIT-14A464-SD-053										
									35							27																		7							1438735-8	2LIT-14A464-SD-052										
46	45	44	43	42	41	40	39	38	37	36	35	34	33	32	31	30	29	28	27	26	25	24	23	22	21	20	19	18	17	16	15	14	13	12	11	10	9	8	7	6	5	4	3	2	1		PART NUMBER	FORD PART NUMBER				
TERMINAL HOLE POSITION																																																				
PIN-OUT CHART KEYING OPTION "A" 																																																				

THIS DRAWING IS UNPUBLISHED. IT IS SUBJECT TO CHANGE WITHOUT NOTICE FOR TYCO ELECTRONICS CORPORATION. IT IS THE RESPONSIBILITY OF THE USER TO OBTAIN THE LATEST REVISION. CHECK WITH THE SUPPLIER FOR THE LATEST REVISION.

DIMENSIONS:

mm



MATERIAL

-

TOLERANCES UNLESS OTHERWISE SPECIFIED:

9 PLC ±.3

1 PLC ±0.10

5 PLC ±.1

4 PLC ±.1

ANGLES ±°

FINISH -

DWN R. VESTAL 01AUG2003

CHK D. STRAUSSER 01AUG2003

APVD D. STRAUSSER 01AUG2003

NAME

46 WAY PCM CONNECTOR HARNESS ASSEMBLY

PRODUCT SPEC

APPLICATION SPEC

WEIGHT

CUSTOMER DRAWING

SIZE A

CAGE CODE 00779


DRAWING NO. C=1438082

RESTRICTED TO -

SCALE 4:1

SHEET 3 OF 5

REV S 1

 Tyco Electronics

Harrisburg, PA 17105-3608

THIS DRAWING IS UNPUBLISHED.	RELEASED FOR PUBLICATION	20
© COPYRIGHT 20 BY TYCO ELECTRONICS CORPORATION. ALL RIGHTS RESERVED.		

[illegible][illegible]

<small>THIS DRAWING IS THE PROPERTY OF TYCO ELECTRONICS CORPORATION. IT IS TO BE USED FOR THE MANUFACTURE OF THE PRODUCT SPECIFIED HEREON. IT IS NOT TO BE REPRODUCED OR COPIED IN ANY MANNER WITHOUT THE WRITTEN PERMISSION OF TYCO ELECTRONICS CORPORATION. IT IS TO BE RETURNED TO TYCO ELECTRONICS CORPORATION WHEN NO LONGER REQUIRED.</small>				<div><div><div>OWN</div><div>01AUG2003</div></div><div><div>CHK</div><div>01AUG2003</div></div><div><div>APP'D</div><div>01AUG2003</div></div></div> <div><div>TYCO</div><div>Electronics</div></div> <div>Tyco Electronics Harrisburg, PA 17105-3608</div>	
DIMENSIONS:		TOLERANCES, UNLESS OTHERWISE SPECIFIED:		NAME	
mm				46 WAY PCM CONNECTOR HARNESS ASSEMBLY	

LOC	DIST	REVISIONS					
FX	00	P	LTR	DESCRIPTION	DATE	DWN	APVD
		-		SEE SHEET I	-	-	-

45	44	43	42	41		38										27												7	5				7-1438735-7	2LIT-14A464-TD-086											
	44		42			38										27												7	5				7-1438735-6	2LIT-14A464-TD-085											
45	44	43	42	41		38																					7	5	4				7-1438735-5	2LIT-14A464-TD-084											
	44		42			38																					7	5	4				7-1438735-4	2LIT-14A464-TD-083											
	44	43	42	41		38																					7	5	4				7-1438735-3	2LIT-14A464-TD-082											
	44		42			38										27											7	5	4				7-1438735-2	2LIT-14A464-TD-081											
	44		42			38																					7	5	4				7-1438735-1	2LIT-14A464-TD-080											
		43	42														26											7	6	4	3			7-1438735-0	2LIT-14A464-TD-079										
																	26											7	6		3			6-1438735-9	2LIT-14A464-TD-078										
	44	43	42														26										7	6	4				6-1438735-8	2LIT-14A464-TD-077											
45	44	43	42	41		38																					7	5					6-1438735-6	2LIT-14A464-TD-076											
	44		42			38																					7	5					6-1438735-5	2LIT-14A464-TD-075											
	44	43	42	41		38																					7	5					6-1438735-4	2LIT-14A464-TD-074											
	44					38										27											8	6					6-1438735-0	2LIT-14A464-TD-073											
	44					38										27											8	7	6				5-1438735-9	2LIT-14A464-TD-072											
	44																26											6						5-1438735-8	2LIT-14A464-TD-071										
	44																26											7	6					5-1438735-7	2LIT-14A464-TD-070										
	44					38										27	26											6						5-1438735-6	2LIT-14A464-TD-069										
	44					38										27	26											7	6					5-1438735-5	2LIT-14A464-TD-068										
	44																26											7	6					5-1438735-4	2LIT-14A464-TD-067										
	44																26											6						5-1438735-3	2LIT-14A464-TD-066										
		43	42														26											7	6	4				5-1438735-2	2LIT-14A464-TD-065										
																	26											7	6					5-1438735-1	2LIT-14A464-TD-064										
	44	42				38										27												7	5					4-1438735-6	2LIT-14A464-TD-063										
	44	42				38																						7	5					4-1438735-5	2LIT-14A464-TD-062										
	44	42				38										27	26										8	6						4-1438735-4	2LIT-14A464-TD-061										
	44	42				38										27	26										8	7	6					4-1438735-3	2LIT-14A464-TD-060										
	44																26										8	7	6					4-1438735-2	2LIT-14A464-TD-059										
	44																26										8	6						4-1438735-1	2LIT-14A464-TD-058										
		43	42														26											8	7	6	5				4-1438735-0	2LIT-14A464-TD-057									
																	26											8	7	6					3-1438735-9	2LIT-14A464-TD-056									
46	45	44	43													27	25																		3-1438735-4	2LIT-14A464-TD-055									
46	45		43													27	25																		2-1438735-7	2LIT-14A464-TD-054									
46	45	44	43	42	40											28																			2-1438735-3	2LIT-14A464-TD-053									
	45	44	43	42	40											28																			2-1438735-2	2LIT-14A464-TD-052									
	44		42			38											27	26										7	5						1438735-7	2LIT-14A464-TD-051									
						40	39	38																											1438735-6	2LIT-14A464-TD-050									
	44		42			38											27	26																	1438735-5	2LIT-14A464-TD-049									
	44	42				38											26																		1438735-4	2LIT-14A464-TD-048									
	44	42				38											26											7	5						1438735-3	2LIT-14A464-TD-047									
	44	42				38											26																		1438735-2	2LIT-14A464-TD-046									
	44					38																						7							1438735-1	2LIT-14A464-TD-045									
46	45	44	43	42	41	40	39	38	37	36	35	34	33	32	31	30	29	28	27	26	25	24	23	22	21	20	19	18	17	16	15	14	13	12	11	10	9	8	7	6	5	4	3	2	1
TERMINAL HOLE POSITION																																				PART NUMBER		FORD PART NUMBER							
PIN-OUT CHART KEYING OPTION "B"																																													

THIS DRAWING IS UNPUBLISHED. RELEASED FOR PUBLICATION 20		DWN A. HOLT 22OCT2007		Tyco Electronics Harrisburg, PA 17105-3608	
CHK S. MANKARYOS 22OCT2007		NAME		46 WAY PCM CONNECTOR HARNESS ASSEMBLY	
APVD S. MANKARYOS 22OCT2007		PRODUCT SPEC		SIZE CAGE CODE DRAWING NO	
APPLICATION SPEC		WEIGHT		RESTRICTED TO	
MATERIAL SEE TABLE		FINISH SEE TABLE		CUSTOMER DRAWING	
DIMENSIONS: mm		TOLERANCES UNLESS OTHERWISE SPECIFIED:		SCALE 4:1	
		9 PLC ±.3 1 PLC ±0.10 5 PLC ± 4 PLC ± ANGLES ±°		SHEET 5 OF 5	

Mouser Electronics

Authorized Distributor

Click to View Pricing, Inventory, Delivery & Lifecycle Information:

[TE Connectivity:](#)

[6-1438082-2](#)