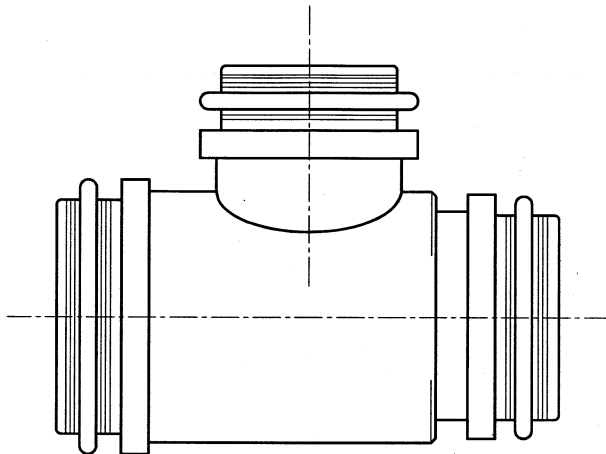


REVISIONS

LTR	DESCRIPTION	DATE	APPROVED
N/C	INITIAL RELEASE	JULY 04	KJW



TRANSITION ASSEMBLY - 90°

NOTES

1. THIS PRODUCT IS DESIGNED TO PROVIDE CONTINUOUS SHIELDING AT THE BRANCH OF AN ELECTRICAL HARNESS AND ACCEPT HEAT SHRINK LIPPED BOOTS (WHERE APPLICABLE).
2. TRANSITION MATERIAL IS ALUMINUM ALLOY PER QQ-A-225 OR EQUIVALENT.
3. SEE SHEETS 2 AND 3 FOR ORDERING INFORMATION AND PART NUMBERING SYSTEM.
- ④ SEE DRAWING TR FOR DETAIL ON TINEL-LOCK RING. RINGS ARE DESIGNED TO BE HEATED ELECTRICALLY. ALL RINGS ARE MARKED WITH THERMOCHROMIC PAINT WHICH CHANGES COLOUR WHEN INSTALLATION TEMPERATURE IS REACHED.
5. ADAPTER TO BE PERMANENTLY MARKED WITH CODE IDENTIFICATION NUMBER AND FULL PART NUMBER. (e.g. 06090-TXE-T-14-10-10CAI-F).
6. TINEL-LOCK RING AND INTERNAL PTFE COATING IS TO BE SPECIFIED IN PART NUMBER WHEN ORDERING.
7. FOR ALTERNATIVE MATERIALS AND PLATING FINISHES CONTACT TYCO/RAYCHEM.

SPECIFICATION CONTROL DRAWING

If this document is printed it becomes uncontrolled. Check for the latest revision

UNLESS OTHERWISE SPECIFIED
DIMENSIONS ARE IN INCHES.
METRIC DIMENSIONS ARE
IN BRACKETS.

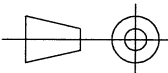
DECIMALS

.X ± --- [mm]
.XX ± --- [mm]
.XXX ± --- [mm]

ANGLES

.X ± ---

DRAWN IRT	DATE JULY 04
CHECKED KJW	DATE JULY 04
APPROVED KJW	DATE JULY 04
APPROVED KJW	DATE JULY 04
CAD NAME 85001	

THIRD ANGLE
PROJECTION**tyco**
Electronics

Tyco Electronics Corporation
300 Constitution Drive
Menlo Park, CA, USA 94025

Raychem

TITLE

TRANSITION ASSEMBLY
- TINELTM LOCK - 90°

SIZE
A4CODE IDENT. NO.
06090

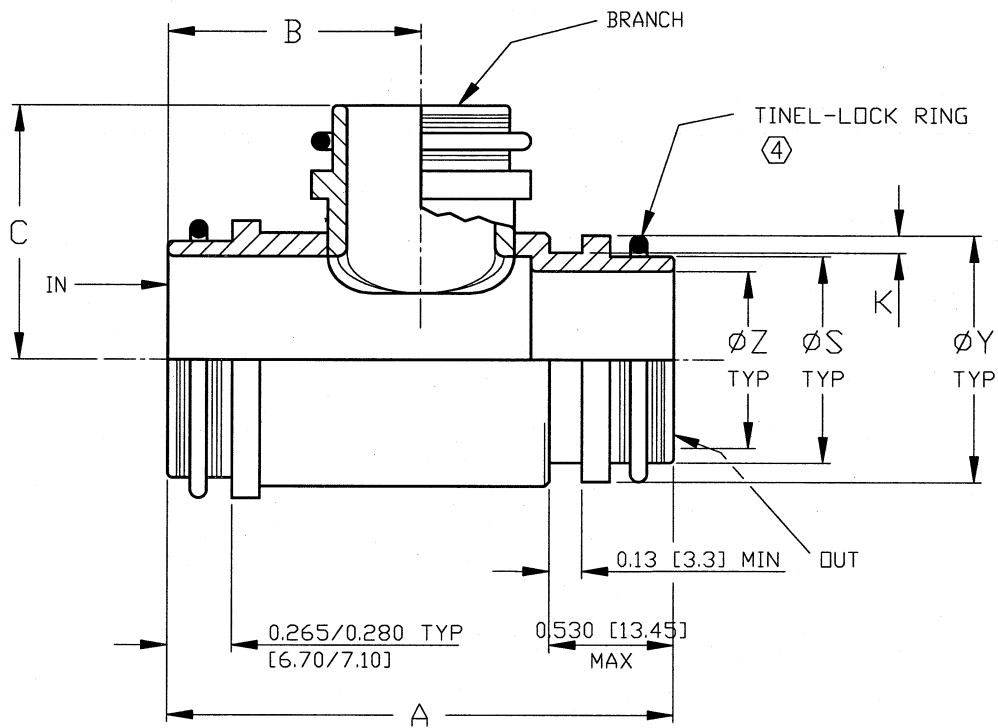
DWG. NO.

TXE-T-14-10-10C*I-F

REV
N/C

DO NOT SCALE THIS DWG

SHEET 1 OF 3

**NOTE**

1. ORDERING CODE IS:
IN, OUT AND BRANCH e.g. 14-10-10

TABLE I		
A	B	C
±0.030 [±0.75]	±0.020 [±0.50]	±0.030 [±0.75]
2.145 [54.50]	1.070 [27.25]	1.100 [28.00]

TABLE II				
ENTRY SIZE	ØZ +0.010 -0.020 [+0.25] [-0.50]	ØS	ØY ±0.015 [±0.38]	K MIN
10	0.625 [15.88]	0.752 [19.11] 0.742 [18.84]	0.925 [23.49]	0.04 [1.0]
14	0.875 [22.23]	1.002 [25.46] 0.991 [25.17]	1.175 [29.84]	-

SIZE	CODE IDENT. NO.	DWG. NO.	REV
A4	06090	TXE-T-14-10-10C*I-F	N/C
DO NOT SCALE THIS DWG			SHEET 2 OF 3

PART NUMBERING SYSTEM

TXE - T - 14 - 10 - 10 C A I - F

PREFIX _____
 TINEL-LOCK TRANSITION - 90° BRANCH

ENTRY SIZE: IN _____

ENTRY SIZE: OUT _____

ENTRY SIZE: BRANCH OUT _____

FINISH (SEE S-CH00-0157-002) _____
 C = ELECTROLESS NICKEL

④ BRAID DESIGNATOR _____
 A = SINGLE LAYER 36 AWG
 B = DOUBLE LAYER 36 AWG

I = RING WITH INSULATING LINING _____

F = PTFE INTERNAL COATING _____

SIZE	CODE IDENT. NO.	DWG. NO.	REV
A4	06090	TXE-T-14-10-10C*I-F	N/C
DO NOT SCALE THIS DWG			SHEET 3 OF 3

Mouser Electronics

Authorized Distributor

Click to View Pricing, Inventory, Delivery & Lifecycle Information:

[TE Connectivity:](#)

[TXE-T-14-10-10-CAI-F](#)