

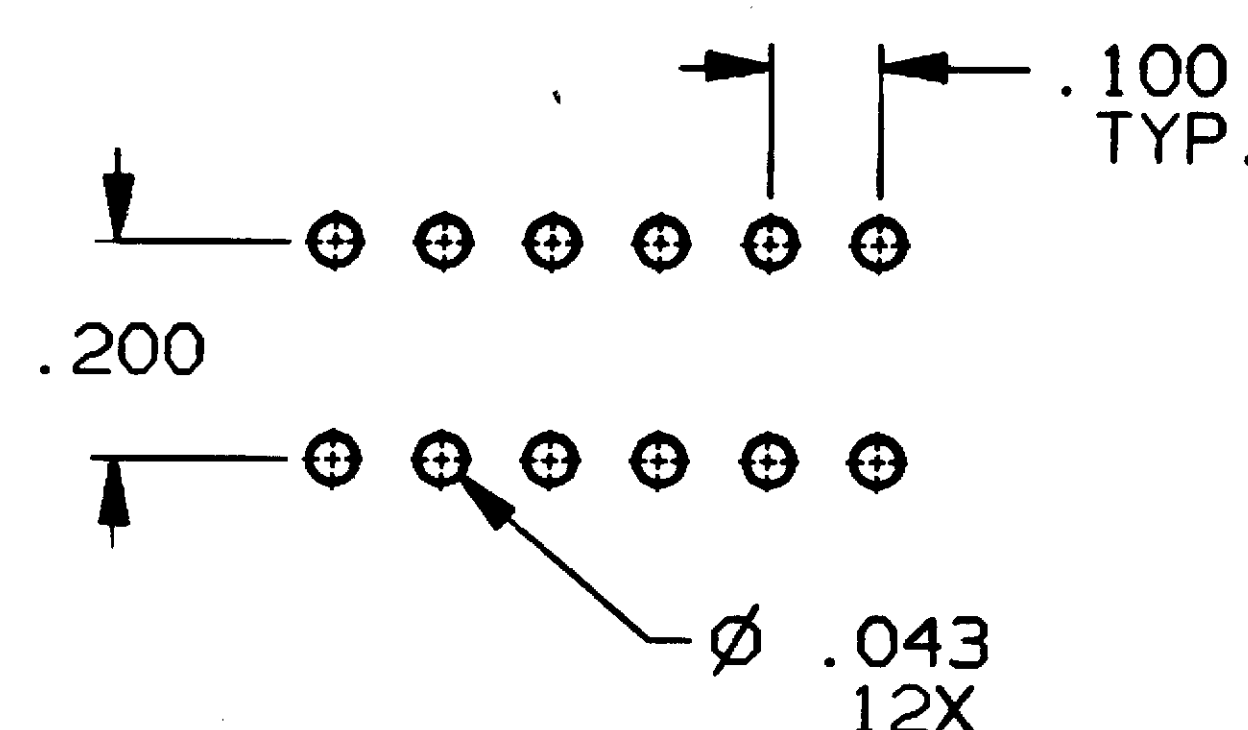
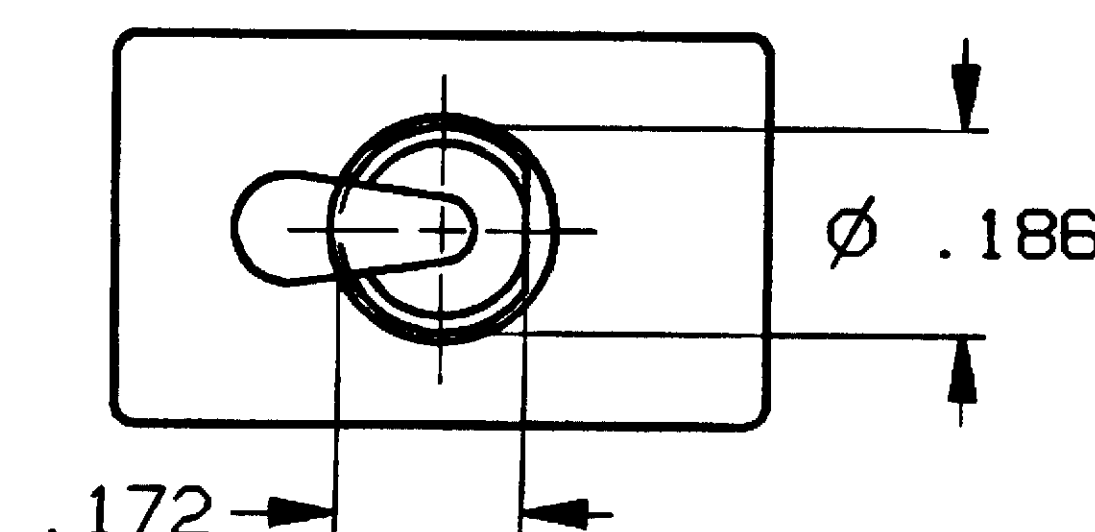
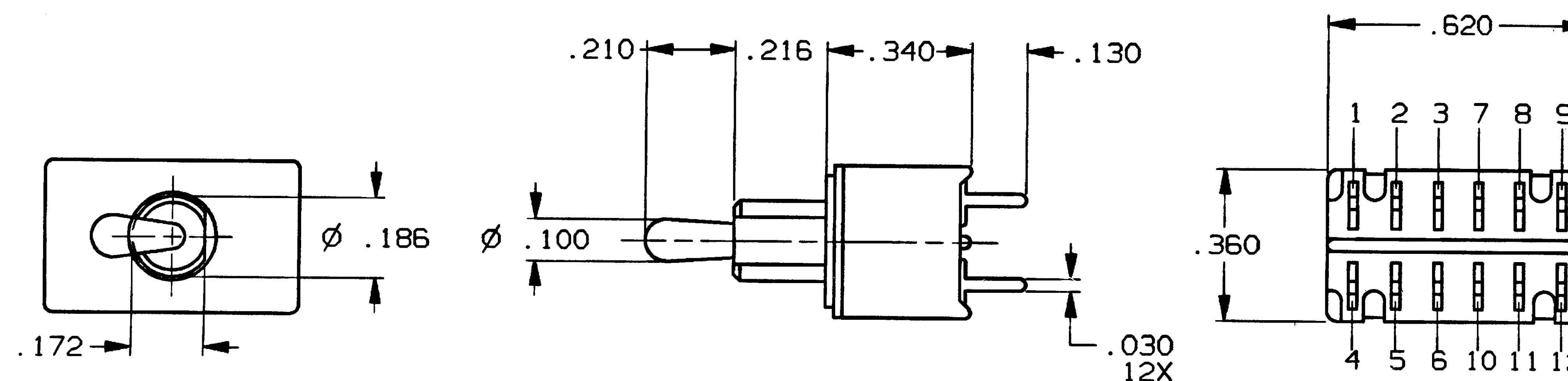
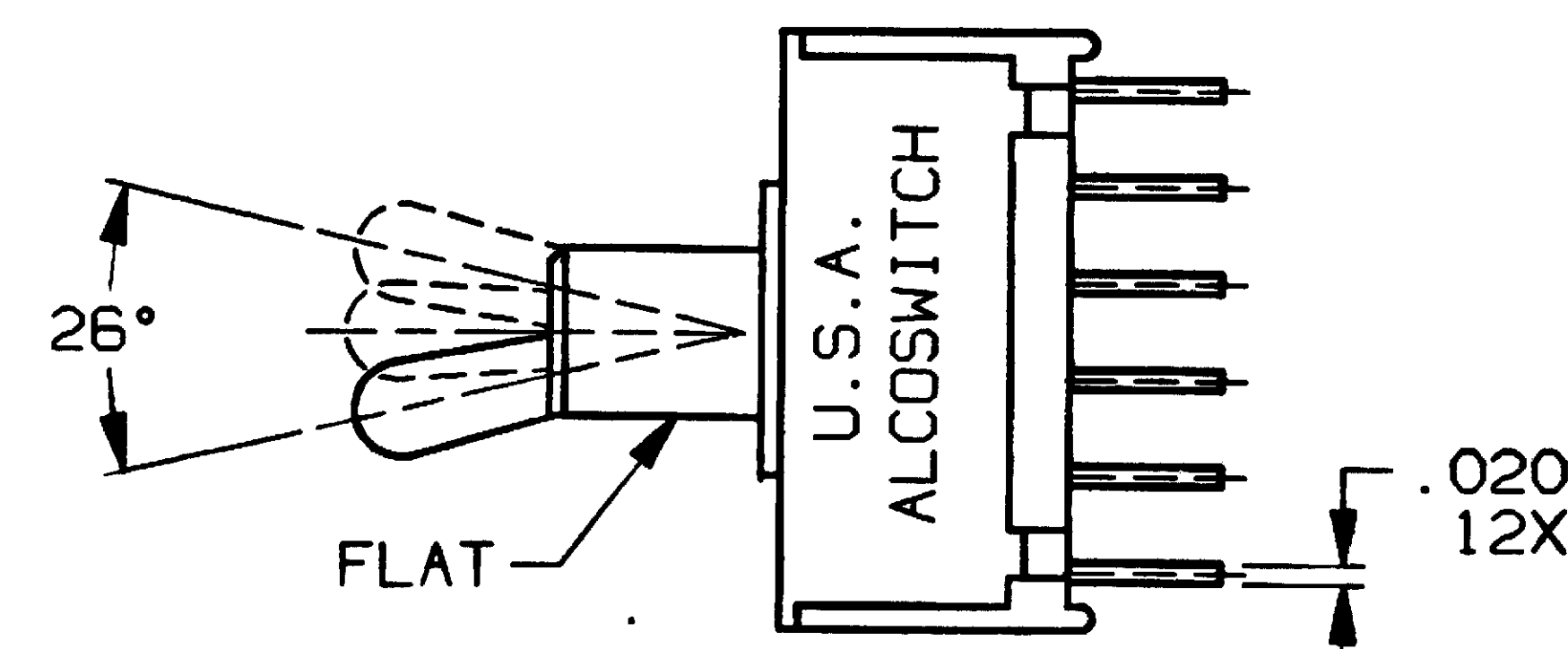
4

3

2

1

CONVERSION CHART	
INCH	MM
.002	0.05
.010	0.25
.020	0.51
.030	0.76
.043	1.09
.100	2.54
.130	3.30
.172	4.37
.187	4.75
.200	5.08
.210	5.33
.216	5.49
.340	8.64
.360	9.14
.620	15.74



RECOMMENDED HOLE LAYOUT
TOLERANCE $\pm .002$ UNLESS
OTHERWISE NOTED

SPECIFICATIONS:

MATERIALS:

CASE: HIGH TEMPERATURE POLYESTER
FRAME: STEEL, TIN PLATED.
ACTUATOR: COPPER ALLOY, NICKEL PLATED.
MOVABLE CONTACT: COPPER ALLOY, GOLD OVER NICKEL PLATE.
STATIONARY CONTACT: COPPER ALLOY, GOLD OVER NICKEL PLATE.
TERMINALS: COPPER ALLOY, TIN LEAD PLATED.
TERMINAL SEAL: EPOXY

ELECTRICAL:

CONTACT RATING: 0.4 VA @ 20 VDC OR PEAK AC
INITIAL CONTACT RESISTANCE: 20 MILLIOHMS MAX.
INSULATION RESISTANCE: 1,000 MEGOHMS AT 500 VDC MIN.
DIELECTRIC STRENGTH: 1,000 VOLTS RMS AT SEA LEVEL
LIFE EXPECTANCY: 80,000 CYCLES (2 POSITION)
60,000 CYCLES (3 POSITION).

ENVIRONMENTAL:

OPERATING TEMPERATURE: -22°F TO +185°F (-30°C TO +85°C)
STORAGE TEMPERATURE: -67°F TO +185°F (-55°C TO +85°C)

NOTES:

1. INTERPRET DRAWING PER ASME Y14.5M-1994.

TERMINALS CONNECTED WHEN TOGGLE IN POSITIONS SHOWN.			
SWITCH ACTION CODE (*)	FLAT	FLAT	FLAT
N	2 TO 3 5 TO 6 8 TO 9 11 TO 12	NONE	2 TO 1 5 TO 4 8 TO 7 11 TO 10
P	2 TO 3 5 TO 6 8 TO 9 11 TO 12	OFF	2 TO 1 5 TO 4 8 TO 7 11 TO 10
R	2 TO 3 5 TO 6 (MOM) 8 TO 9 11 TO 12	NONE	2 TO 1 5 TO 4 8 TO 7 11 TO 10
PA	2 TO 3 5 TO 6 8 TO 9 11 TO 12	2 TO 3 5 TO 6 8 TO 7 11 TO 10	2 TO 1 5 TO 4 8 TO 7 11 TO 10

NOTE:
DESIGNATION NUMBERS ARE FOR REFERENCE ONLY
AND DO NOT APPEAR ON THE SWITCHES.

2

OUTLINE DRAWING

SPECIFICATIONS ARE SUBJECT TO CHANGES WITHOUT NOTICE

THIRD ANGLE
PROJECTION

TOLERANCES (EXCEPT AS NOTED)
ANGULAR = $\pm 1^\circ$
DECIMAL .XX =
DECIMAL .XXX = $\pm .010$
DECIMAL .XXXX =

AUGAT CONFIDENTIAL
This document contains information
which is the exclusive property of
Augat Inc.
Distribution, reproduction or use by
others is not permitted without the
expressed written consent of Augat
Inc.

UNLESS OTHERWISE SPECIFIED
DIMENSIONS ARE IN INCHES
DO NOT SCALE PRINT

FILE NAME: 40031OUT
DIRECTORY: TINSWCH

MATERIAL:

SEE SPECIFICATIONS

FINISH:

SEE SPECIFICATIONS

ORIGINAL DATE
OF DRAWING: 5-22-80

DRAWN: R. WICIEL

DATE: 5-22-80

CHECKED: B. BUCKHEIT

DATE: 5-22-80

APPROVED: KJ

DATE: 5-22-80

CODE IDENT. NO. 91506

DWG. SIZE C

NEXT ASSY:

THIS IS A C.A.D. GENERATED DRAWING.
DO NOT MAKE MANUAL REVISIONS TO MASTER.



AUGAT 452 JOHN DIETSCHE BLVD.
ATTLEBORO FALLS, MASS. 02763
INC.

TITLE: **OUTLINE DRAWING**
SUBMINIATURE TOGGLE SWITCH
4 POLE - P.C.
(TT41(*)G-PC-1)

DWG. NO. 40031-SD

REV. 2

PRODUCT CODE: A51

SCALE: SHEET 1 OF 1

REV 2

REVISIONS

REVISED & REDRAWN
ECO# 392-95
SEP 6-22-95
APP'D: [Signature]

Mouser Electronics

Authorized Distributor

Click to View Pricing, Inventory, Delivery & Lifecycle Information:

[TE Connectivity:](#)

[TT41NGPC1](#)