

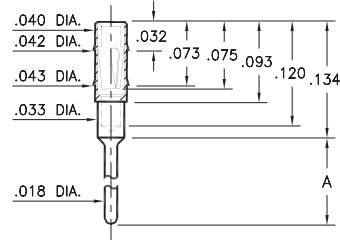
# PIN RECEPTACLES

**FOR .015" - .020" DIAMETER PINS (#11 CONTACT)  
AND .015" - .022" DIAMETER PINS (#05 & #21 CONTACTS)  
(SEE SPECIFIC CONTACT RANGE ON PAGE 251)**

## 0489

**0489-X-15-XX-11-XX-04-0**

Press-fit in .041 mounting hole

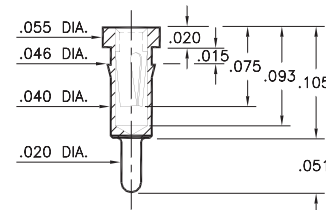


Basic Part Number	Length A
<b>0489-0</b>	.102
<b>0489-1</b>	.199
<b>0489-2</b>	.299

## 0463

**0463-0-15-XX-21-XX-04-0**

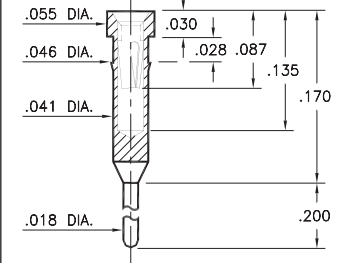
Press-fit in .043 mounting hole.  
Shell is Phosphor Bronze Alloy 544 (B2)



## 0466

**0466-0-15-XX-21-XX-04-0**

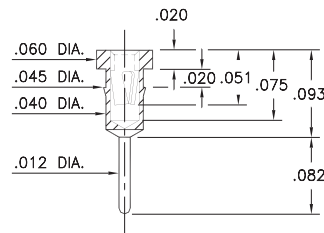
Press-fit in .043 mounting hole.  
Shell is Phosphor Bronze Alloy 544 (B2)



## 7491

**7491-0-15-XX-09-XX-04-0**

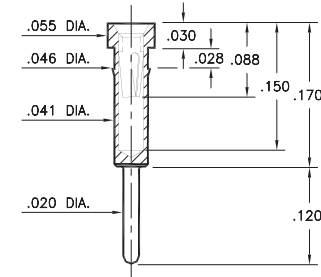
Press-fit in .042 mounting hole  
\*Contact substitution not recommended



## 0462

**0462-0-15-XX-X1-XX-04-0**

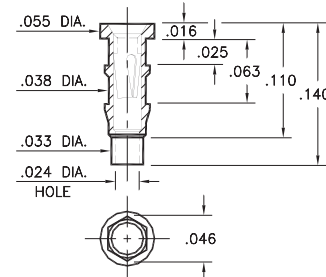
Press-fit in .043 mounting hole



## 0560

**0560-0-15-XX-11-XX-10-0**

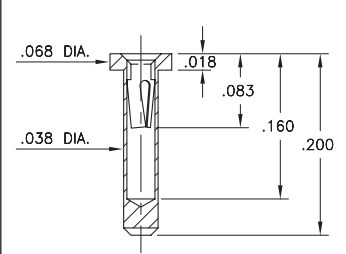
Hex press-fit in .043 plated through-hole



## 5552

**5552-0-15-XX-05-XX-10-0**

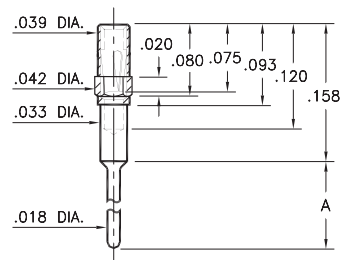
Solder mount in .040 min. mounting hole



## 4890

**4890-X-15-XX-11-XX-04-0**

Octagonal press-fit in .041 mounting hole

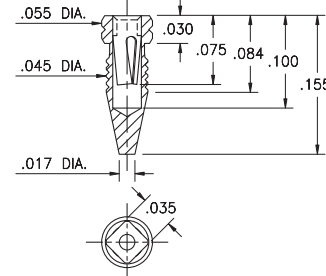


Basic Part Number	Length A
<b>4890-0</b>	.102
<b>4890-1</b>	.199
<b>4890-2</b>	.299

## 4994

**4994-0-15-15-11-27-10-0**

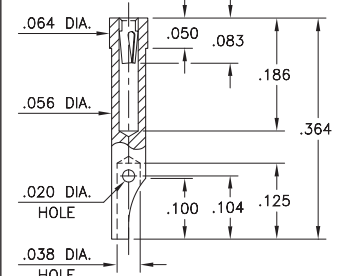
Compliant press-fit in .041 - .044 dia. mounting hole



## 4485

**4485-0-51-XX-21-XX-10-0**

Solder mount in .059 min. mounting hole  
For wire sizes up to 22 AWG



### SPECIFICATIONS:

**Shell Material:** Brass Alloy 360, 1/2 Hard

**Contact Material:** Beryllium Copper Alloy 172, HT

**Dimensions:** Inches

**Tolerances On:** Lengths: ±.005

Diameters: ±.002

Angles: ± 2°



**ORDER CODE: XXXX - X - XX - XX - XX - XX - XX - 0**

**BASIC PART #**

**SPECIFY SHELL FINISH:**

- 01 200 μ" TIN/LEAD OVER NICKEL
- ◆ 80 200 μ" TIN OVER NICKEL (RoHS)
- ◆ 15 10 μ" GOLD OVER NICKEL (RoHS)

**SPECIFY CONTACT FINISH:**

- 02 100 μ" TIN/LEAD OVER NICKEL
- ◆ 84 100 μ" TIN OVER NICKEL (RoHS)
- ◆ 27 30 μ" GOLD OVER NICKEL (RoHS)

**SELECT CONTACT:**

**#05, #11 or #21 CONTACT (DATA ON PAGE 251)**

(For alternate contact choices, see group A on page 248)



# Mouser Electronics

Authorized Distributor

Click to View Pricing, Inventory, Delivery & Lifecycle Information:

## Mill-Max:

[0462-0-15-15-11-27-04-0](#) [0560-0-15-01-11-02-10-0](#) [0560-0-15-01-11-27-10-0](#) [0489-2-15-01-11-02-04-0](#) [0489-2-15-01-11-27-04-0](#) [0489-1-15-01-11-02-04-0](#) [0489-1-15-01-11-27-04-0](#) [0489-0-15-01-11-27-04-0](#) [0466-0-15-01-21-02-04-0](#) [0466-0-15-01-21-27-04-0](#) [0463-0-15-01-21-02-04-0](#) [0463-0-15-01-21-27-04-0](#) [0462-0-15-01-21-02-04-0](#) [0462-0-15-01-21-27-04-0](#) [0462-0-15-01-11-02-04-0](#) [0462-0-15-01-11-27-04-0](#) [0462-0-15-15-21-27-04-0](#) [0463-0-15-15-21-27-04-0](#) [0466-0-15-15-21-27-04-0](#) [0489-1-15-15-11-27-04-0](#) [0489-2-15-15-11-27-04-0](#) [4890-1-15-15-11-27-04-0](#) [0462-0-15-00-21-00-04-0](#) [7491-0-15-00-21-00-04-0](#) [7491-0-15-00-11-00-04-0](#) [4994-0-15-15-11-27-10-0](#) [0462-0-15-01-11-14-04-0](#) [0489-2-15-01-11-14-04-0](#) [0462-0-15-80-21-14-04-0](#) [0462-0-15-80-11-14-04-0](#) [0489-2-15-80-11-14-04-0](#) [0489-1-15-80-11-14-04-0](#) [0560-0-15-01-11-14-10-0](#) [0466-0-15-80-21-14-04-0](#) [0463-0-15-80-21-14-04-0](#) [0560-0-15-80-11-14-10-0](#) [0466-0-15-01-21-14-04-0](#) [0489-0-15-80-11-14-04-0](#) [0489-1-15-01-11-14-04-0](#) [0489-0-15-01-11-14-04-0](#) [0463-0-15-01-21-14-04-0](#) [0462-0-15-01-21-14-04-0](#) [0462-0-15-15-11-14-04-0](#) [0462-0-15-15-21-14-04-0](#) [462-10-151-52-127340](#)