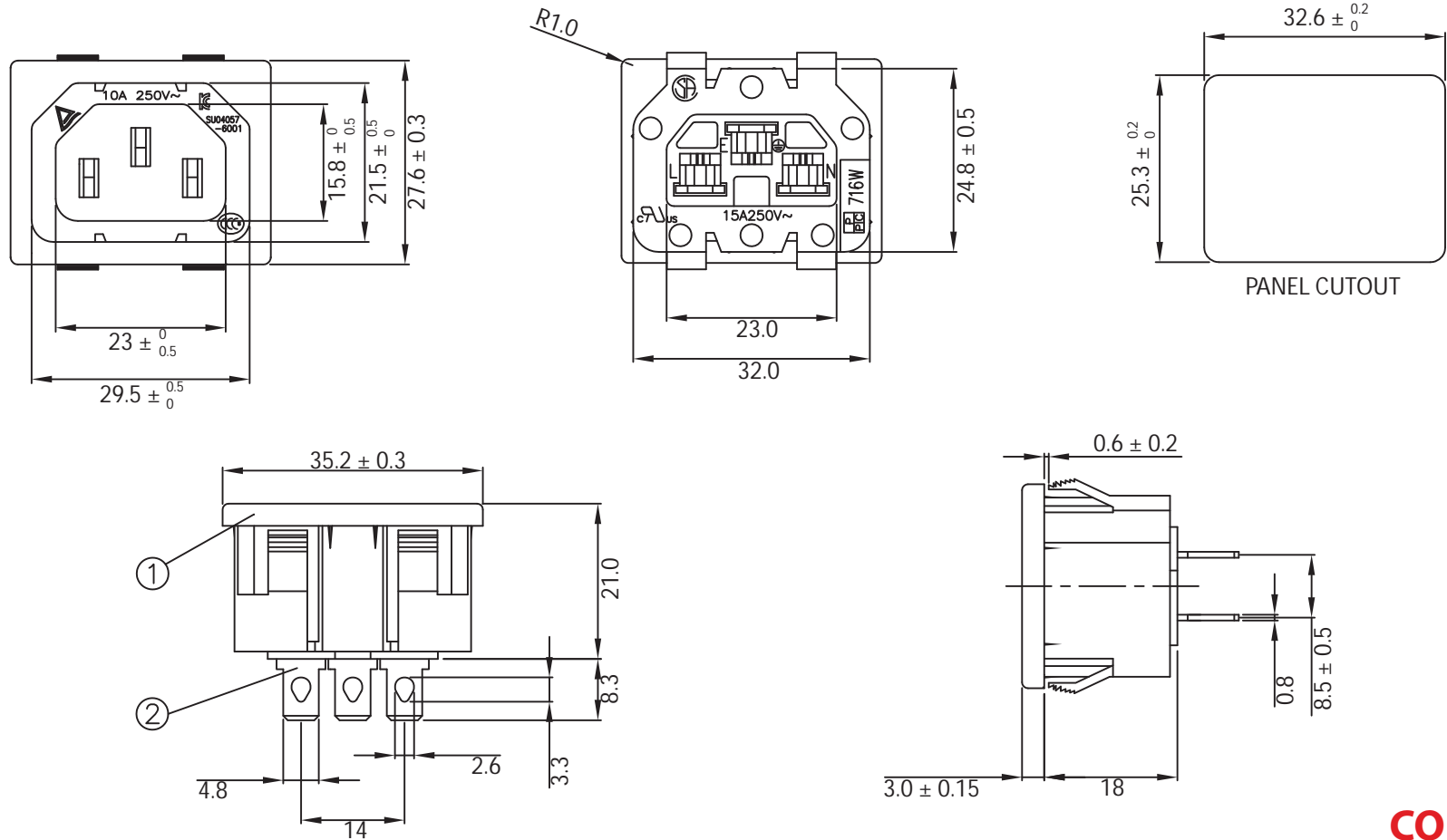


THESE DRAWINGS ARE THE PROPERTY OF QUALTEK ELECTRONICS AND NOT TO BE REPRODUCED FOR OR COMMUNICATED TO A THIRD PARTY WITHOUT THE EXPRESS WRITTEN PERMISSION OF AN OFFICER OF QUALTEK ELECTRONICS.

REVISION			
REV.	DESCRIPTION	DATE	APPROVED
B	RoHS Compliancy	06-01-06	DP
C	Updated Approvals and Notes	01-26-16	LY
D	Depth Change to meet UL 60320	11-26-18	LY



NOTES:

RATING:
UL, CSA:15A 250V AC
TUV, CCC: 10A 250V AC
APPROVALS: UL, CSA, TUV, CCC
PANEL THICKNESS: 0.8~2.0mm
RoHS COMPLIANT

CONTROLLED

2	Contact PIN Brass Strip t=0.8mm Tin-Plated	3
1	Body Insulator PC Black Color UL94V-0	1
Qualtek Electronics Corp. PPC DIVISION		
Dim range (mm)	Tolerance +/- (mm)	Part Number: 716W-X2/02 RoHS Compliant
0-1	0.40	Description: AC RECEPTACLE
1-6	0.40	
6-18	0.50	
18-50	0.50	UNIT: mm REV. D
50-120	0.70	Drawn / Date Checked / Date Approved / Date
120-250	0.90	B.ZHANG 07-14-05 07-14-05 JJH / 07-14-05
250-500	1.20	

Mouser Electronics

Authorized Distributor

Click to View Pricing, Inventory, Delivery & Lifecycle Information:

Qualtek:

716W-X2/02