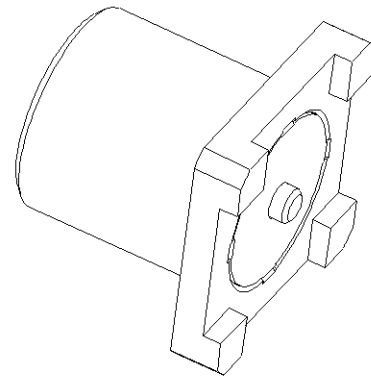
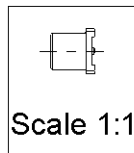
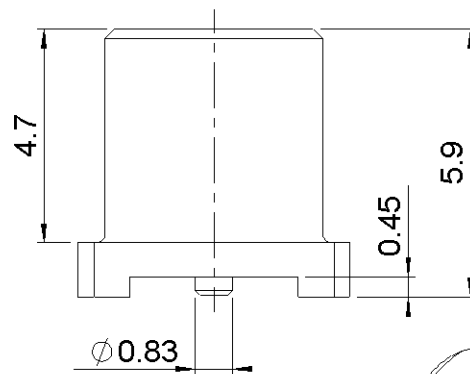
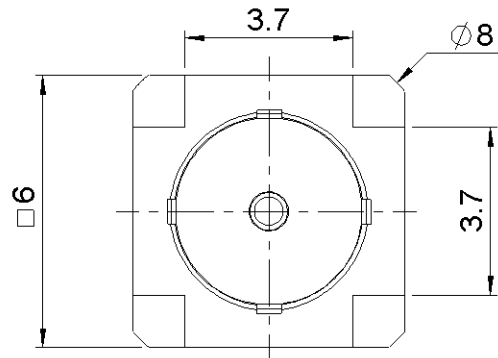
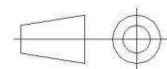


| | | | |
|----------|-------------|---------------|------------------------|
| PAGE 1/5 | ISSUE 1425B | SERIES MCX 75 | PART NUMBER R213424800 |
|----------|-------------|---------------|------------------------|



All dimensions are in mm.



| COMPONENTS | MATERIALS | PLATING (μm) |
|----------------|-------------------------|-------------------------|
| Body | BRASS | GOLD OVER NICKEL |
| Center contact | BERYLLIUM COPPER | GOLD OVER NICKEL |
| Outer contact | - | - |
| Insulator | PEEK | - |
| Gasket | - | - |
| Others parts | - | - |
| - | - | - |
| - | - | - |

| | | | |
|----------|--------------------|----------------------|-------------------------------|
| PAGE 2/5 | ISSUE 1425B | SERIES MCX 75 | PART NUMBER R213424800 |
|----------|--------------------|----------------------|-------------------------------|

PACKAGING

| Standard | Unit | Other |
|------------|-------------------|-------------------|
| 100 | Contact us | Contact us |

ELECTRICAL CHARACTERISTICS

| | | | |
|---------------------------------|-------------|-------------|-------------------|
| Impedance | | 75 | Ω |
| Frequency | | 0-6 | GHz |
| VSWR | 1.25 | + | 0.0000 |
| Insertion loss | | 0.1 | √F(GHz) dB Maxi |
| RF leakage | - (| NA | - F(GHz)) dB Maxi |
| Voltage rating | | 335 | Veff Maxi |
| Dielectric withstanding voltage | | 1000 | Veff mini |
| Insulation resistance | | 1000 | MΩ mini |

ENVIRONMENTAL

| | | |
|-----------------------|-----------------|-----------|
| Operating temperature | -55/+155 | °C |
| Hermetic seal | NA | Atm.cm3/s |
| Panel leakage | NA | |

MECHANICAL CHARACTERISTICS

| | | | |
|----------------------------|--|-----------|-----------|
| Center contact retention | | | |
| Axial force – Mating End | | 10 | N mini |
| Axial force – Opposite end | | 10 | N mini |
| Torque | | NA | N.cm mini |

SPECIFICATION

OTHER CHARACTERISTICS

| | | | |
|--------------------|--|-----------|------|
| Recommended torque | | | |
| Mating | | NA | N.cm |
| Panel nut | | NA | N.cm |

Assembly instruction:

| | | | |
|-------------|--|---------------|-------------|
| Mating life | | 500 | Cycles mini |
| Weight | | 0.5300 | g |

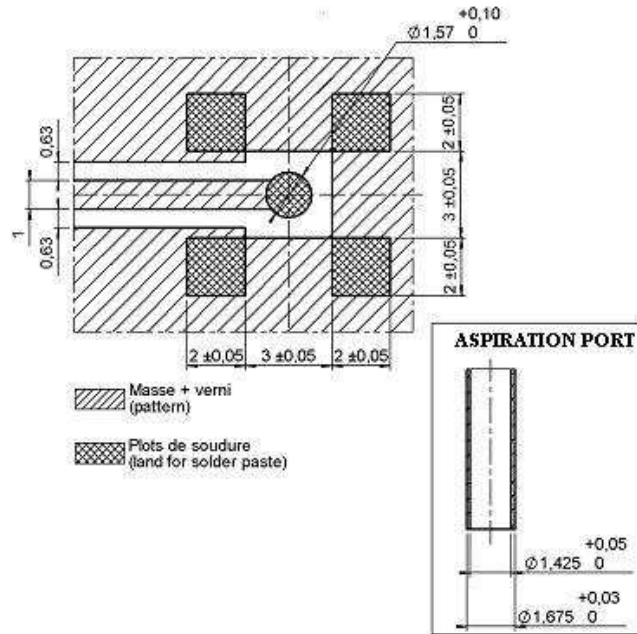
Others:

-

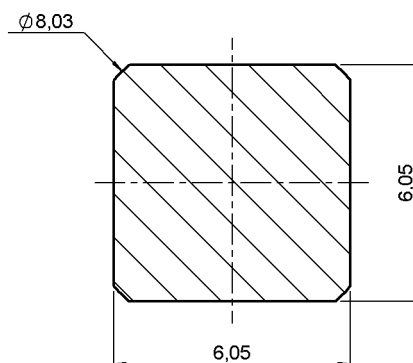
| | | | |
|----------|-------------|---------------|------------------------|
| PAGE 3/5 | ISSUE 1425B | SERIES MCX 75 | PART NUMBER R213424800 |
|----------|-------------|---------------|------------------------|

MCX SERIES - INFORMATION

Coplanar line : pattern and signal are on the same side . Thickness of PCB :.064(1.6mm)
 The material of PCB is the epoxy resin of glass fabrics bacs . (Er = 4.8) . The solder resist should be printed except for the land pattern on the PCB .



SHADOW OF MCX RECEPTACLE FOR VIDEO CAMERA

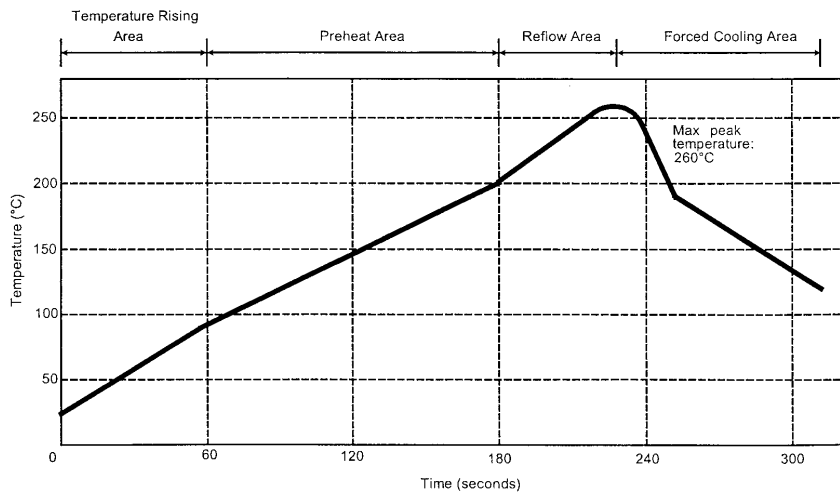


| | | | |
|----------|-------------|---------------|------------------------|
| PAGE 4/5 | ISSUE 1425B | SERIES MCX 75 | PART NUMBER R213424800 |
|----------|-------------|---------------|------------------------|

SOLDER PROCEDURE

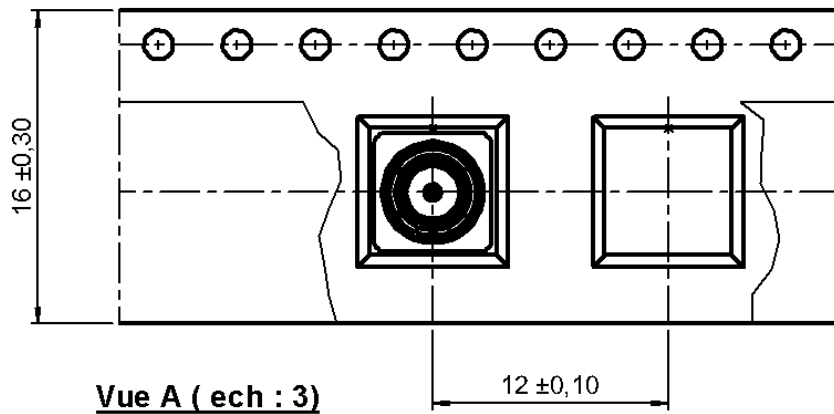
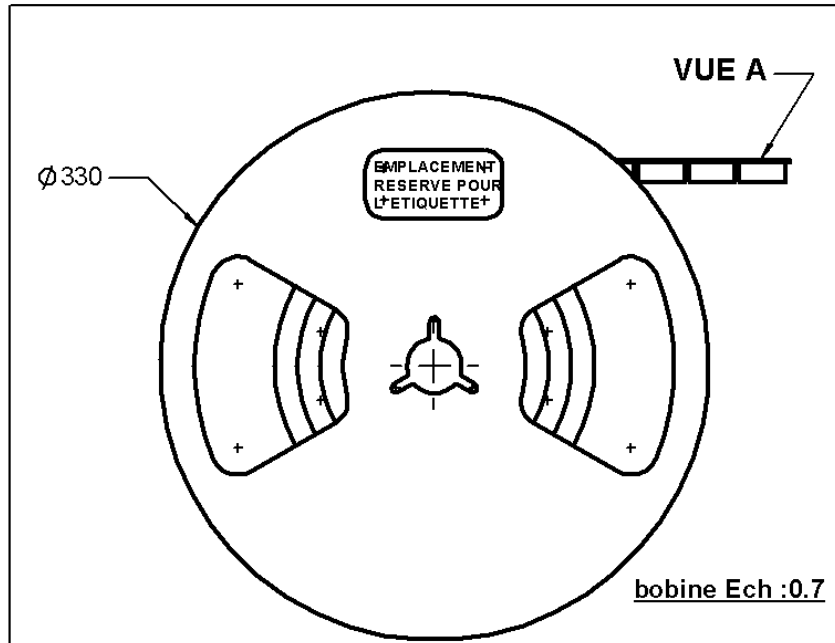
- Deposition of solder paste 'Sn Ag4 Cu0.5' on mounting zone by screen printing application. We recommend a low residue flux. We advise a thickness of 150 microns (5.9 microinch). Verify that the edges of the zone are clean.
- Placement of the receptacle on the mounting zone with an automatic machine of 'pick and place' type. Video camera is recommended for the positioning of the component. Adhesive agents must not be used on the receptacle.
- Soldering by infra-red reflow. Below, please find the typical profile to use.
- Cleaning of printed circuit boards.
- Checking of solder joints and position of the component by visual inspection.

TEMPERATURE PROFILE



| Parameter | Value | Unit |
|----------------------------------|-----------|--------|
| Temperature rising Area | 1 - 4 | °C/sec |
| Max Peak Temperature | 260 | °C |
| Max dwell time @260°C | 10 | sec |
| Min dwell time @235°C | 20 | sec |
| Max dwell time @235°C | 60 | sec |
| Temperature drop in cooling Area | -1 to - 4 | °C/sec |
| Max dwell time above 100°C | 420 | sec |

| | | | |
|----------|-------------|---------------|------------------------|
| PAGE 5/5 | ISSUE 1425B | SERIES MCX 75 | PART NUMBER R213424800 |
|----------|-------------|---------------|------------------------|



Mouser Electronics

Authorized Distributor

Click to View Pricing, Inventory, Delivery & Lifecycle Information:

Radial:

[R213424800](#) [R213424800W](#)