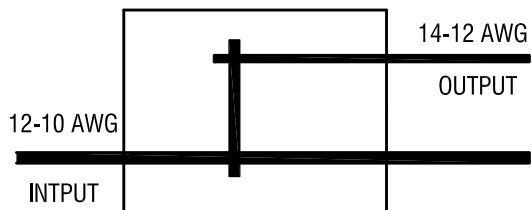
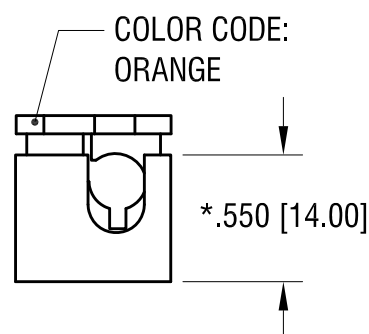
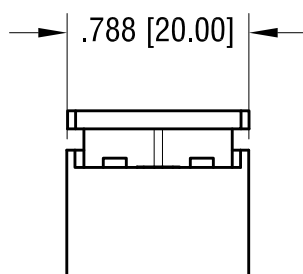
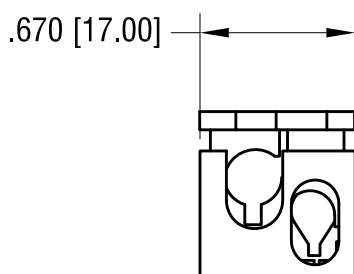
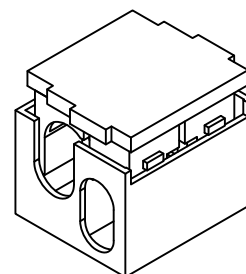


# SCHEMATIC



THIS DOCUMENT IS THE PROPERTY OF  
KEYSTONE ELECTRONICS CORP. AND  
SHALL NOT BE REPRODUCED, DISTRIBUTED  
OR USED AS A BASIS FOR MANUFACTURE  
WITHOUT PRIOR WRITTEN PERMISSION  
FROM KEYSTONE ELECTRONICS CORP.

## ACTUAL SIZE:



## NOTE:

1. INSULATION: MAT'L- POLYCARBONATE, LEXAN UL 94V-0
2. CONTACT: MAT'L- COPPER ALLOY  
FINISH- TIN PLATE, OVER NICKEL PLATE
3. FOR WIRE: SOLID WIRE  
WIRE SIZE: 12 AWG MIN. - 10 AWG MAX., INPUT  
14 AWG MIN. - 12 AWG MAX., OUTPUT
4. RATED VOLTAGE 300V  
RATED CURRENT: 25A
5. UL LISTED: E490623

\* HEIGHT OF CLOSED CONNECTOR

## **KEYSTONE ELECTRONICS CORP.**

www.keyelco.com • NEW HYDE PARK, NY 11040 • Tel (516) 328-7500

PART NAME

T - SERIES WIRE CONNECTOR

MATERIAL

AS NOTED

FINISH

AS NOTED

DRN BY

NT

DATE

1.06.17

APP'D

LN

SCALE

1.2X

TOLERANCES

INCH

[MM]

DECIMAL

$\pm .010$  [  $\pm 0.25$  ]

ANGULAR

$\pm 1^\circ$

UNLESS OTHERWISE SPECIFIED

CODE

C

DWG NO.

8382

DATE

DESCRIPTION

REV.

# Mouser Electronics

Authorized Distributor

Click to View Pricing, Inventory, Delivery & Lifecycle Information:

[Keystone Electronics:](#)

[8382](#)