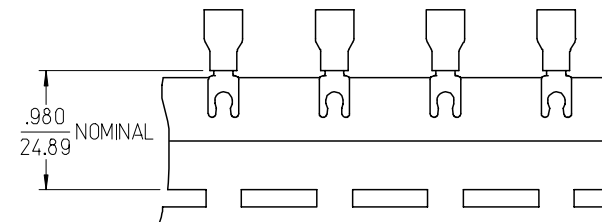
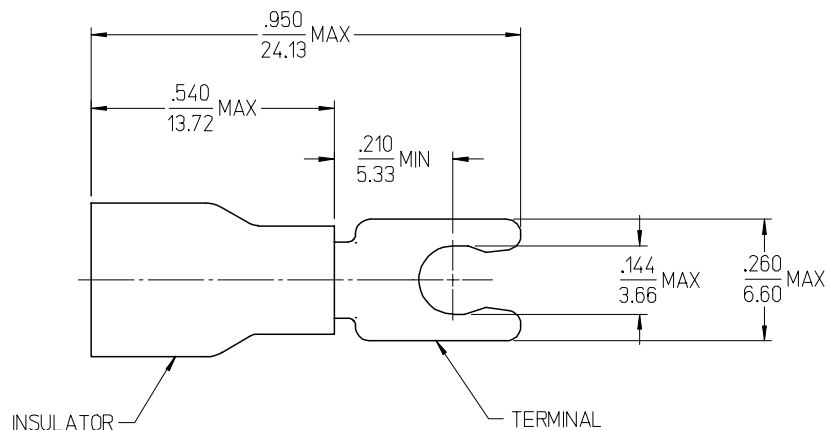
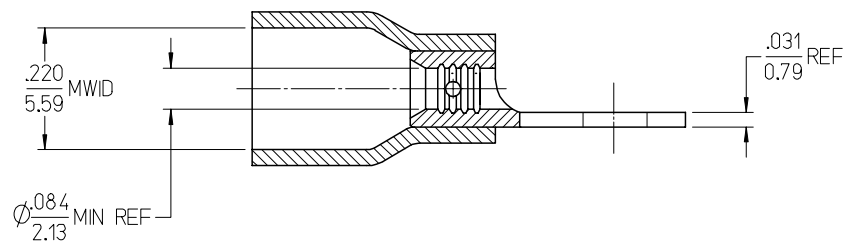


[illegible]

10	9	8	7	6	5	4	3	2	19099
MATERIAL NO. LOOSE PC	ENGINEERING NO. LOOSE PC	MATERIAL NO. ON TAPE	ENGINEERING NO. ON TAPE	WIRE SIZE	STUD SIZE	INSULATOR COLOR			
190990077	BB-2707-06XX	190990029	BB-2707-06XXT	16-14 AWG	6	BLUE			



PARTS ON TAPE
SCALE 1:1



NOTES:

1. TERMINAL MATERIAL: COPPER
2. TERMINAL FINISH: TIN PLATED
3. INSULATOR MATERIAL: PVC
4. MWID = MAXIMUM WIRE INSULATION DIAMETER.
5. ASSEMBLY IS ROHS COMPLIANT.

INITIAL RELEASE EC NO: ET2007-0317 2007/03/14 DRWN: EHILE 2007/03/14 CHKD: JMACNEIL 2007/03/15 APPR: JMACNEIL	DESCRIPTION	QUALITY SYMBOLS ▽=0 ▽=0	GENERAL TOLERANCES (UNLESS SPECIFIED)		DIMENSION STYLE IN/MM		SCALE 4:1	DESIGN UNITS INCH	THIRD ANGLE PROJECTION
				mm	INCH	DRAWN BY EHILE	DATE 2007/02/26	TITLE SNAP SPADE TERMINAL, 16-14 AWG, INSULKRIMP, EXPANDED	
			4 PLACES	± ---	± ---	CHECKED BY JMACNEIL	DATE 2007/02/26		
			3 PLACES	± ---	± ---	APPROVED BY JMACNEIL	DATE 2007/02/26	MOLEX MOLEX INCORPORATED	
			2 PLACES	± ---	± ---				
			1 PLACE	± ---	± ---	MATERIAL NO.	DOCUMENT NO.	SHEET NO.	
			ANGULAR ± ---°			SEE CHART	SD-19099-002	1 OF 1	
			DRAFT WHERE APPLICABLE MUST REMAIN WITHIN DIMENSIONS			THIS DRAWING CONTAINS INFORMATION THAT IS PROPRIETARY TO MOLEX INCORPORATED AND SHOULD NOT BE USED WITHOUT WRITTEN PERMISSION			
			A			B			

Mouser Electronics

Authorized Distributor

Click to View Pricing, Inventory, Delivery & Lifecycle Information:

Molex:

19099-0029