

This drawing involves proprietary design rights of Tyco Electronics Corporation, and all design, manufacture, reproduction, use and sale rights regarding the same are expressly reserved. It is submitted for a specific purpose and the recipient by accepting this drawing, assumes custody and control and agrees to take reasonable precautions; (a) that this drawing will not be copied and reproduced, in whole or in part, or its contents revealed in any manner, or to any person except to meet the purpose for which it was delivered and (b) that any special features peculiar to this design will not be incorporated in other projects without the expressed written permission of Tyco Electronics Corporation.

REVISIONS			
EC	REV	DESCRIPTION	DATE
—	A	INITIAL RELEASE	03/31/12

9. MODULE INFORMATION

CONNECTOR	TYCO PART NUMBER	ELCON PART NUMBER	CATALOG MODULE #	QTY	SIZE NO.	CONTACT QTY	MATING PIN	MAX. CURRENT (PER CONTACT)	CONTACT SPACING	VOLTAGE RATING*
SOCKET	6766477-1	279-1155-00200D	FP0204	8	8	8	1.25 X 7.00 [.049 X .276]	35 AMPERES	7.50 [.2953]	250 VOLTS
			FP0403	1	22	24	.64 [.025] SQ.	3 AMPERES	2.50 [.0984]	125 VOLTS
			FP0523	1	ACTIVE RIGHT ANGLE GUIDE PIN (19.1mm)					
			FP0500	1	LEFT MOUNTING FLANGE					
			FP0501	1	RIGHT MOUNTING FLANGE					

NOTES: UNLESS OTHERWISE SPECIFIED.

1. PART NUMBER CHANGES AND OR DESIGN CHANGES AFFECTING ITEM INTERCHANGEABILITY REQUIRE PRIOR ELCON APPROVAL AND AUTHORIZATION BY REVISION TO THIS DRAWING.
2. MATERIALS:

INSULATORS: THERMOPLASTIC, GLASS REINFORCED, COLOR BLACK. UL94V-0 FLAMMABILITY RATED.

SOLDER SIGNAL PIN: BRASS ALLOY.

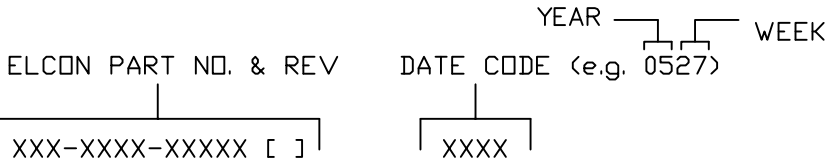
POWER CONTACTS: PHOSPHOR BRONZE ALLOY, COPPER ALLOY.

CROWN BANDS: BERYLLIUM COPPER ALLOY.

GUIDE PIN: BRASS COPPER ALLOY.
3. FINISHES:

CONTACTS: GOLD PLATED PER MIL-G-45204 TYPE II, CLASS 0, .000030" MIN. THK, OVER NICKEL PLATED PER QQ-N-290, CLASS 2, .000040" MIN. THK. SOLDER TAILS, TIN (90/10) PER ASTM B 545, .000100" MIN. THICK.

GUIDE PIN: SILVER PLATED PER QQ-S365.
4. MOUNTING FLANGES ACCEPT M3 OR NO. 4 SCREWS, (USER SUPPLIED).
5. RECOMMENDED PRESSING TOOL PN FIX00308.
6. ALL POWER MODULES ARE NON HOT PLUG.
7. ITEMS PROVIDED TO THIS SPECIFICATION TO BE PERMANENTLY IDENTIFIED PER THE FOLLOWING IDENTIFIER:



8. THIS CONNECTOR MATES WITH PIN CONNECTOR PN 279-1155-00100.

← MM
INCH

OR MM [INCH]

THIRD ANGLE PROJECTION

UNLESS OTHERWISE SPECIFIED DIMENSIONS ARE IN METRIC [INCHES]

TOLERANCES

ANGLES ± .5°

DECIMALS

.XX ± .25 [.010]

.X ± .5 [.020]

DRAWN

OL

CHECKED

APPROVED

APPROVED

S.Z

DCA APPROVED

ACAD FILE NUMBER

C6766477D.DWG

DATE

01/03/12

01/03/12

DWG NUMBER

C6766477

DWG SCALE

1 = 1

SH 1 OF 3

Tyco Electronics Corporation
Menlo Park, Ca 94025

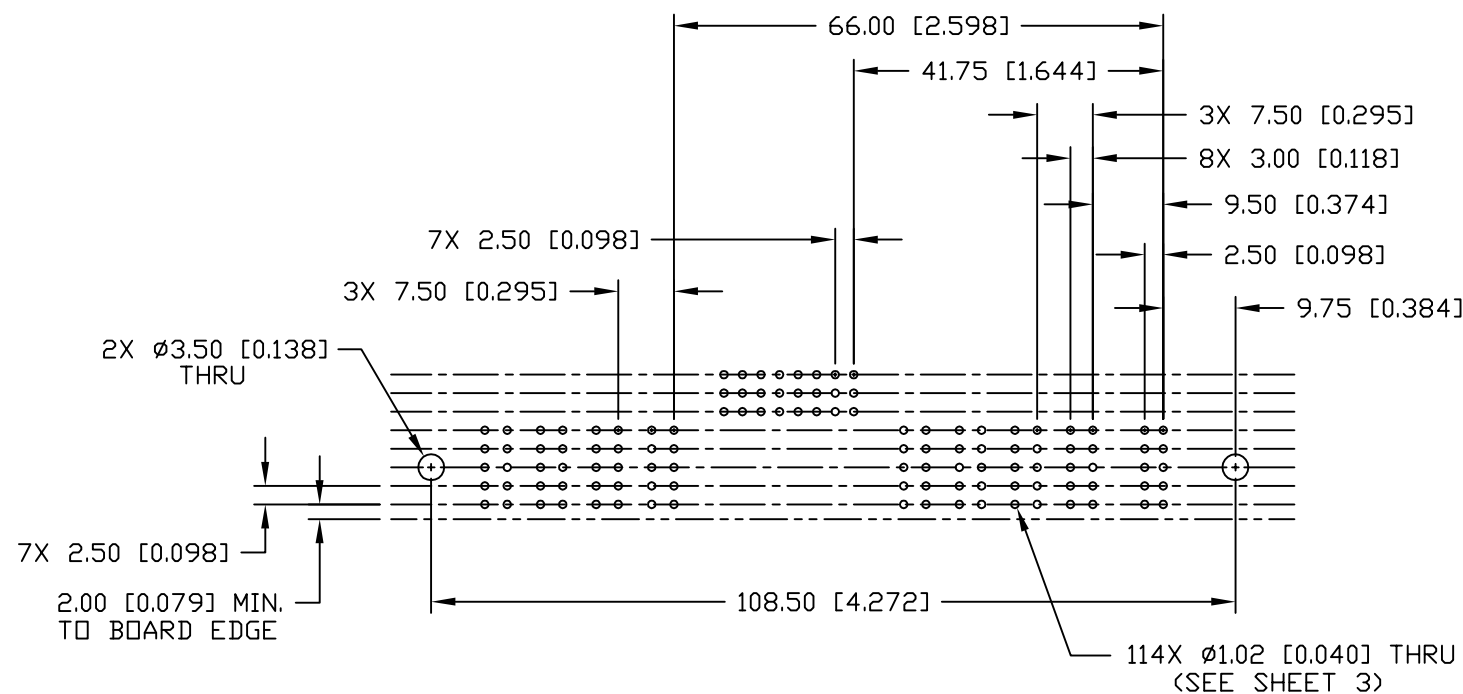
TITLE

SOCKET CONNECTOR, FLATPAQ
RIGHT ANGLE, COMPLIANT TAILS
PN: 279-1155-00200D

REV.

A

A



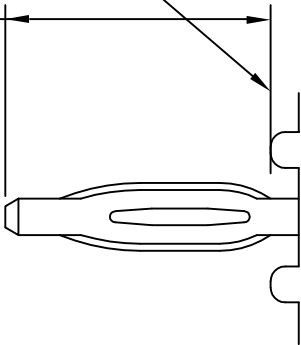
4

4

This drawing involves proprietary design rights of Tyco Electronics Corporation, and all design, manufacture, reproduction, use and sale rights regarding the same are expressly reserved. It is submitted for a specific purpose and the recipient by accepting this drawing, assumes custody and control and agrees to take reasonable precautions; (a) that this drawing will not be copied and reproduced, in whole or in part, or its contents revealed in any manner, or to any person except to meet the purpose for which it was delivered and (b) that any special features peculiar to this design will not be incorporated in other projects without the expressed written permission of Tyco Electronics Corporation.

P.C. BOARD
SURFACE REF

5.08 [0.200]
4.06 [0.160]



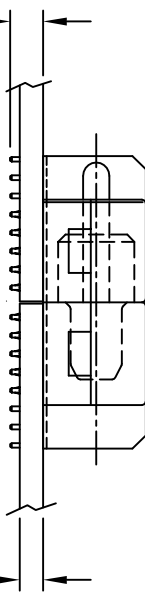
COMPLIANT PIN DETAIL

INSERTION/EXTRACTION FORCES

MAXIMUM PUSH-IN: 133.3N PER PIN
[30 LBS]

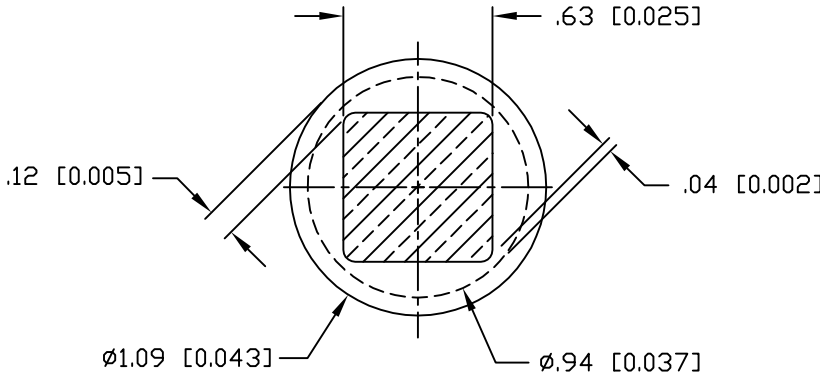
MINIMUM PUSH-OUT: 44.4N PER PIN
[10 LBS]

5.08 [0.200]
4.06 [0.160]



X.XX [X.XXX]

MATED CONDITION



SOLDER TERMINATION AREA

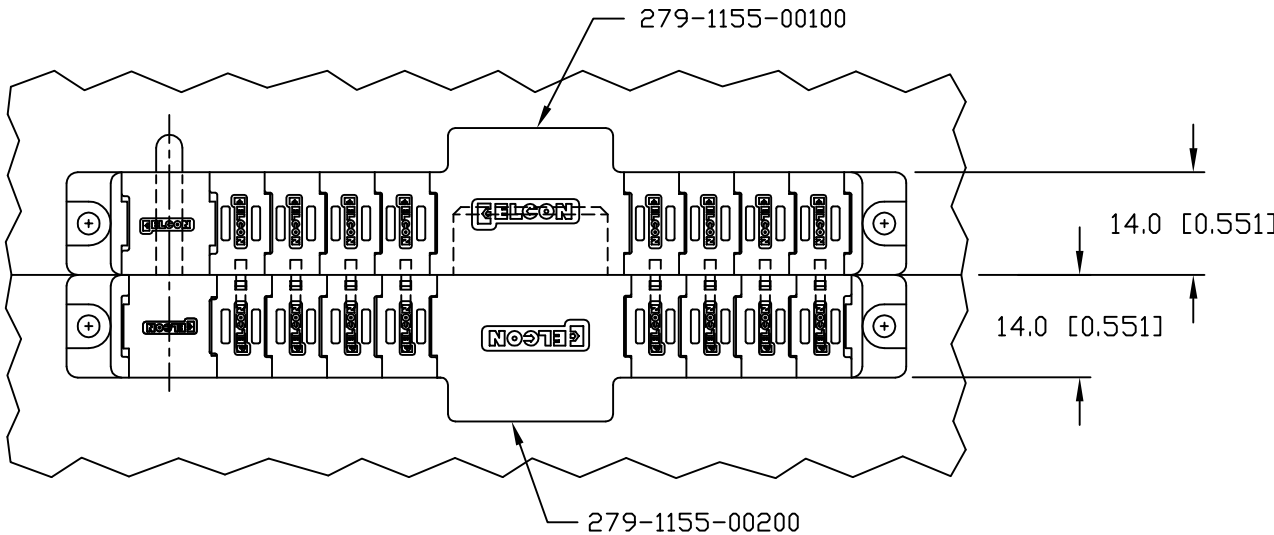
RECOMMENDED PRINTED CIRCUIT HOLE

FINISHED HOLE: $\phi 1.02$ [0.040] ± 0.08 [0.003]

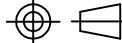
DRILLED HOLE: $\phi 1.15$ [0.0453] ± 0.013 [0.0005]

COPPER PLATE: .025 [0.0010] MINIMUM (PER SURFACE)

TIN PLATE: .008 [0.0003] MINIMUM (PER SURFACE)



MM
INCH



THIRD ANGLE PROJECTION

UNLESS OTHERWISE
SPECIFIED DIMENSIONS
ARE IN METRIC [INCHES]

TOLERANCES

ANGLES $\pm .5^\circ$

DECIMALS

.XX $\pm .25$ [0.010]

.X $\pm .5$ [0.020]

DRAWN

OL

CHECKED

APPROVED

APPROVED

S.Z

DCA APPROVED

S.Z

ACAD FILE NUMBER

DATE

01/03/12

APPROVED

S.Z

01/03/12

C6766477D.DWG

tyco
Electronics

Tyco Electronics Corporation
Menlo Park, Ca 94025

ELCON

TITLE

USER INFORMATION
COMPLIANT TAIL TERMINATION
AND MATED CONDITION

SIZE

DWG NUMBER

B

C = 6766477

REV.

A

DWG SCALE 1=1

SH 3 OF 3

Mouser Electronics

Authorized Distributor

Click to View Pricing, Inventory, Delivery & Lifecycle Information:

[TE Connectivity:](#)

[6766477-1](#)