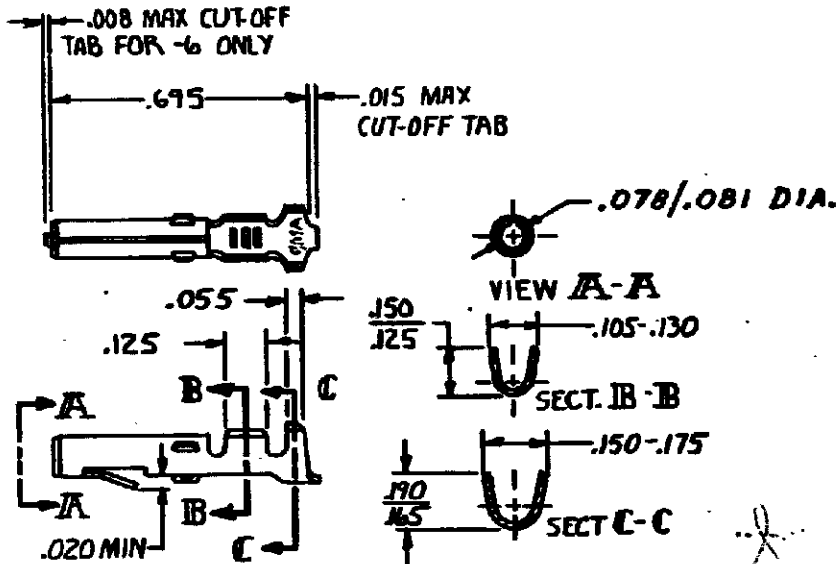


DRAWING MADE IN THIRD ANGLE PROJECTION

12 LCC CM 53

© COPYRIGHT

REVISIONS			
LTR	DESCRIPTION	DATE	APPROVED
T1	REVISED PER ECO-11-005294	05APR11	HMR



▲ NICKEL ON ENTIRE TERMINAL WITH .000030 GOLD OVER INSIDE OF MATING AREA AND WIRE BARREL.

GOLD	▲ .01Z PH. BRZ.	60619-7
GOLD	▲ .01Z BRASS	-5
TIN	.01Z PH. BRZ	-4
TIN	.01Z BRASS	60619-1
FINISH	MATERIAL	PART NO

UNLESS OTHERWISE SPECIFIED DIMENSIONS ARE IN INCHES. TOLERANCES ON: DECIMALS ± .015 ANGLES ±	CONTRACT NO	TE Connectivity	
	DR M. FEHER 11-14-79		
MATERIAL SEE TABLE	CHK D.S. Heide 1/4/80	NAME SOCKET, LOOSE PIECE, COMMERCIAL MATE-N-LOK	
	APPO [Signature] 1-7-80	SIZE A	CODE IDENT. NO 00779
FINISH SEE TABLE	WIRE RANGE 20-14 AWG	DRAWING NO 60619	SHEET
	INSULATION DIA .130 MAX	SCALE	

CUSTOMER DRAWING

Mouser Electronics

Authorized Distributor

Click to View Pricing, Inventory, Delivery & Lifecycle Information:

[TE Connectivity:](#)

[60619-7](#)