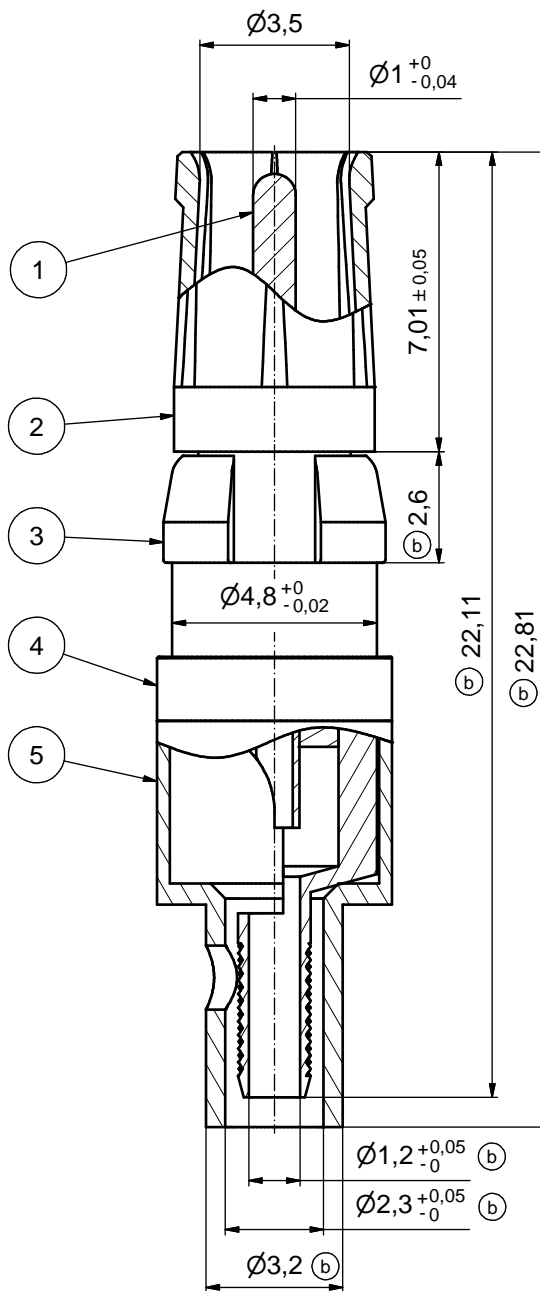
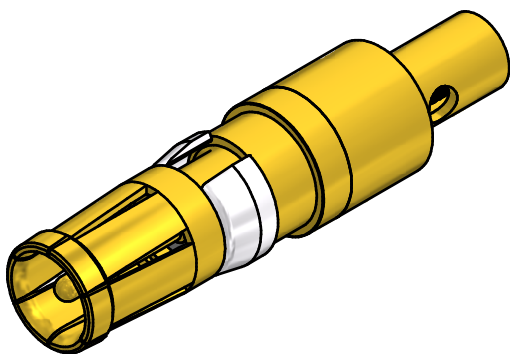
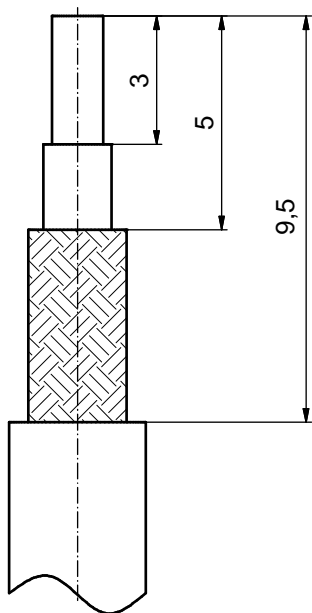


STRIPPING DIMENSIONS



ASSEMBLY TOOLING:

1. CENTER CONTACT:
SOLDERED
2. OUTER CONDUCTOR:
SOLDERED OR CRIMPED
USE CRIMP TOOL: 360X10519X
WITH TOOL INSERT: 360X11019X
INSERT CAVITY C: HEX 2.67/.105

| Part no. | Finish Pos.1 | Finish Pos.2 | Finish Pos.3 | Finish Pos. 4/5 |
|------------|--|--|---------------|------------------------|
| 132J20019X | min. 50µin HARD GOLD over min. 50µin NICKEL | min. 30µin HARD GOLD over min. 50µin NICKEL | NICKEL PLATED | GOLD FLASH over NICKEL |
| 132A20019X | GOLD FLASH over NICKEL | GOLD FLASH over NICKEL | NICKEL PLATED | GOLD FLASH over NICKEL |

Directive 2002/95/EC RoHS compliant

| | | | | | |
|---|----------------------|----------|--------------|--------------------|---|
| THIS DRAWING MAY NOT BE COPIED OR REPRODUCED IN ANY WAY, AND MAY NOT BE PASSED ON TO A THIRD PARTY WITHOUT WRITTEN PERMISSION. OWNERSHIP AND COPYRIGHT OF CONEC GmbH DO NOT ALTER CAD DRAWING BY HAND | tolerance ISO 2768-c | | dim. in mm | | scale: 8:1 |
| | date | | name | | material: COPPER ALLOY (Pos. 1 - 5) |
| | drawn | 10.02.06 | Lehmenkühler | | title: COAXIAL CONTACT SOCKET 50 OHM center contact solder, outer contact solder/crimp for cable RG 178 B/U, 196 A/U, 404/U |
| | appd. | 10.02.06 | Mickenbecker | | |
| | norm | | | | |
| d-old | | | | dwg no: 13K2IR3A | |
| 9 x b | Ä5173 | 17.04.14 | HS | DIN-A3 | |
| a | Original | | | sh: 1 | |
| rev. | description | date | name | part no: see table | |



Mouser Electronics

Authorized Distributor

Click to View Pricing, Inventory, Delivery & Lifecycle Information:

[CONEC:](#)

[132J20019X](#)