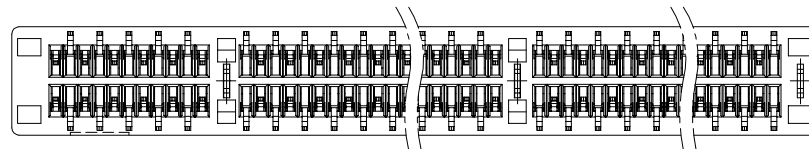
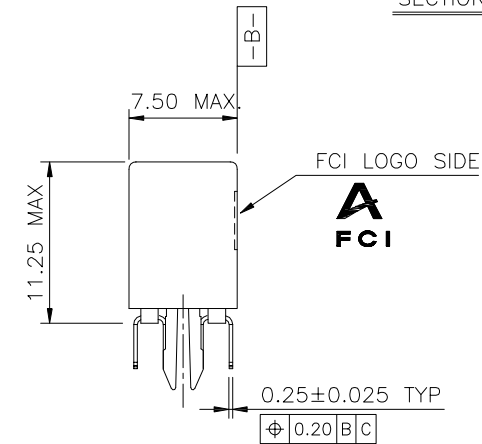
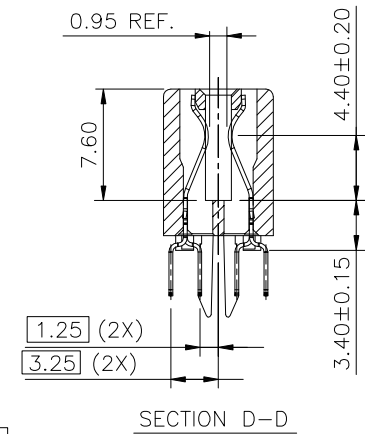
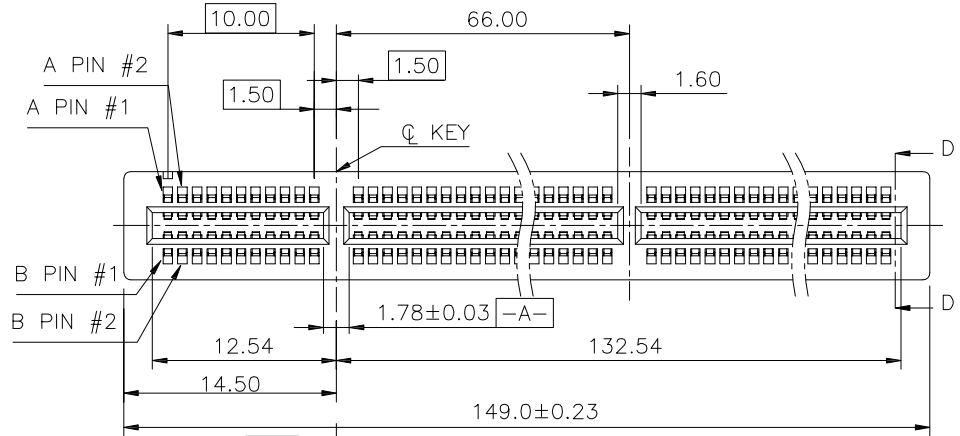
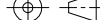



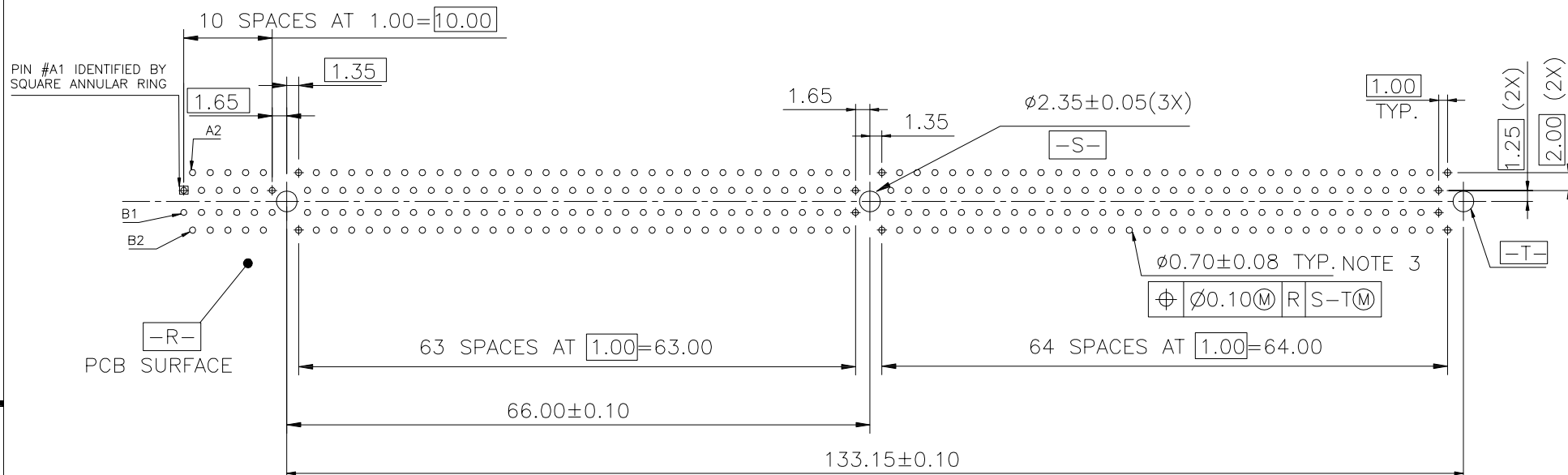
PRODUCT NO.
10027747-X1XXXX



CONFIDENTIAL

mat'l. code				tolerances unless otherwise specified				CUSTOMER COPY		<div><div><div>A</div><div>FCI</div></div><div>www.fciconnect.com</div></div>	
ltr	ecn no	dr	date	linear	.X ± 0.30			projection		title	
A	T04-0386	M W	10/07/04		.XX ± 0.20					PCI EXPRESS GEN3	
B	T04-0427	M W	12/10/04		.XXX ± 0.10					CARD EDGE ASSY 280P	
C	T05-0010	M W	01/11/05	angles	0° ± 2°				MM	product family	
D	ELX-00-21161-1	S T	05/27/15	dr	STONE LI	05/27/15	EDGE CARD			code	
-	-	-	-	enrg	STONE LI	05/27/15	size dwg no			TWN	
				chr	/	/	scale	A4	sheet		
				appd	PM ZHENG	05/27/15			10027747		1 of 4
sheet index	revision	D	D	D	D						
	sheet	1	2	3	4						

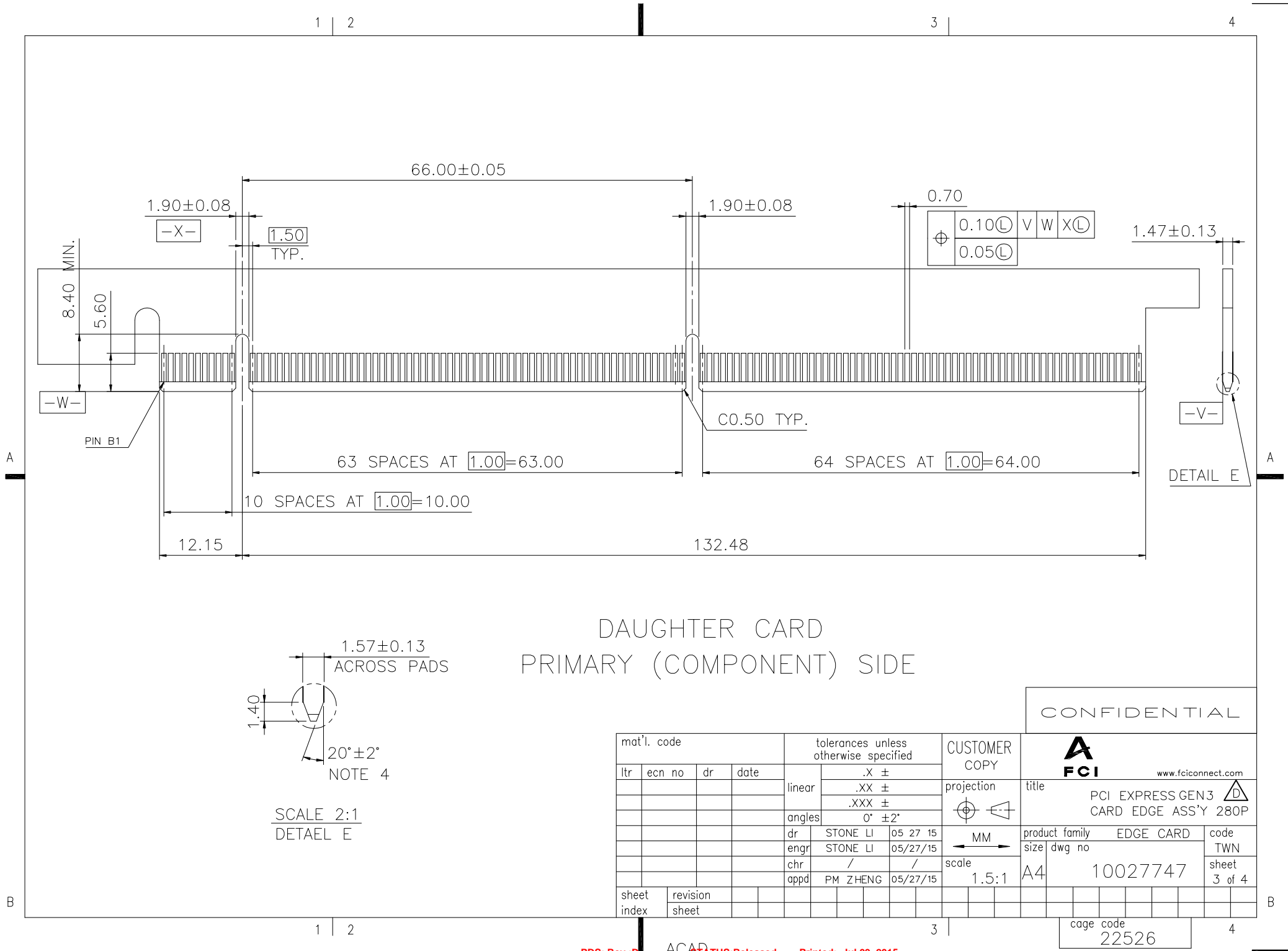
cage code
22526



MOTHER BOARD FOOTPRINT PATTERN
CONNECTOR SIDE SHOWN

CONFIDENTIAL

mat'l. code				tolerances unless otherwise specified			CUSTOMER COPY	<div><div>A</div><div>FCI</div><div>www.fciconnect.com</div></div>											
ltr	ecn no	dr	date	linear	.X ±			projection	title <div>PCI EXPRESS GEN3 <div>D</div></div> <div>CARD EDGE ASS'Y 280P</div>										
					.XX ±														
					.XXX ±														
				angles	0° ±2°														
				dr	STONE LI	05/27/15	MM	product family						EDGE CARD		code			
				engr	STONE LI	05/27/15		size						dwg no		TWN			
				chr	/	/		scale						A4		sheet			
				appd	PM ZHENG	05/27/15	1.5:1	10027747						2 of 4					
sheet index		revision sheet																	



NOTES:

1.MATERIAL:

HOUSING: HIGH TEMPERATURE NYLON, GLASS FILLED UL94V-0
RATED. SUITABLE FOR REFLOW SOLDERING.

TERMINAL: COPPER ALLOY

PLATING: 50u" NICKEL UNDERPLATE ALL OVER

CONTACT AREA PLATING - SEE PRODUCT NUMBER CODE

SOLDER TAIL: TIN OR TIN/LEAD (90/10) - SEE PRODUCT
NUMBER CODE 100u" MIN. OVER 50u" NICKEL

METAL BOARD LOCKS: COPPER ALLOY

FINISH: 100u" TIN OR TIN/LEAD (90/10) OVER 50u" NICKEL

UNDERPLATE SEE PRODUCT NUMBER CODE

2.PRODUCT SPECIFICATION: GS-12-233

③THE HORIZONTAL AXIS FOR THE HOLE PATTERN IS ESTABLISHED BY

A LINE THROUGH THE CENTER OF THE TWO Ø2.35 HOLES.

THE VERTICAL AXIS IS 90° TO THE HORIZONTAL AXIS, THROUGH THE CENTER
OF DATUM Z.

④CHAMFER EDGES MUST BE FREE OF CUTTING BURRS.

5.RoHS COMPATIBLE PRODUCT SPECIFICATIONS

a - PLATING:

- "LF" MEANS THE PRODUCT IS LEAD-FREE, 2um MINIMUM MATTE TIN OVER 1.27um
MINIMUM NICKEL UNDERPLATE.

b - MANUFACTURING PROCESS COMPATIBILITY

- THE HOUSING WILL WITHSTAND EXPOSURE TO 260°C±5°C SOLDER BATH TEMPERATURE FOR
5 SECONDS IN A WAVE SOLDER APPLICATION WITH A 1.6mm MIN THICK CIRCUIT BOARD.

PRODUCT NUMBER CODE

10027747 -x x x x x □ □

HOUSING COLOR OPTIONS

1-BLACK

PEGS OPTIONS

1-METAL BOARD LOCKS

TERMINAL PLATING OPTIONS

0-50u" Ni UNDERPLATE
30u" Au CONTACT AREA
100u" TIN TAIL AREA ----- COMPATIBLE RoHS

1-50u" Ni UNDERPLATE
15u" Au CONTACT AREA
100u" TIN TAIL AREA ----- COMPATIBLE RoHS

2-50u" Ni UNDERPLATE
GOLD FLASH CONTACT AREA
100u" TIN TAIL AREA ----- COMPATIBLE RoHS

3-50u" Ni UNDERPLATE
30u" Au CONTACT AREA
100u" TIN/LEAD TAIL AREA ----- INCOMPLIANT RoHS

4-50u" Ni UNDERPLATE
15u" Au CONTACT AREA
100u" TIN/LEAD TAIL AREA ----- INCOMPLIANT RoHS

5-50u" Ni UNDERPLATE
GOLD FLASH CONTACT AREA
100u" TIN/LEAD TAIL AREA ----- INCOMPLIANT RoHS

PACKAGING OPTIONS

T-TRAY PACKAGING

RESERVED

0


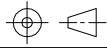
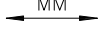
TAIL LENGTH OPTIONS

	TAIL LENGTH	PCB THICKNESS
1	3.10 ± 0.25 -0.13	2.36±0.10

LEAD FREE OPTION

LEAVE BLANK FOR TERMINAL PLATING 3.4.5
"LF" FOR TERMINAL PLATING OPTION 0.1.2

CONFIDENTIAL

mat'l. code				tolerances unless otherwise specified				CUSTOMER COPY		 www.fciconnect.com			
ltr	ecn no	dr	date	linear	.X ±			projection					
					.XX ±								
					.XXX ±								
				angles	0° ±2°								
				dr	STONE LI	05/27/15	MM		product family		EDGE CARD	code	
				enr	STONE LI	05/27/15			size dwg no				TWN
				chr	/	/			scale				
				appd	PM ZHENG	05/27/15	1:1	A4	10027747		sheet 4 of 4		
sheet index	revision sheet												

cage code
22526

Mouser Electronics

Authorized Distributor

Click to View Pricing, Inventory, Delivery & Lifecycle Information:

[FCI / Amphenol:](#)

[10027747-11010TLF](#) [10027747-11110TLF](#) [10027747-11210TLF](#)