

5

4

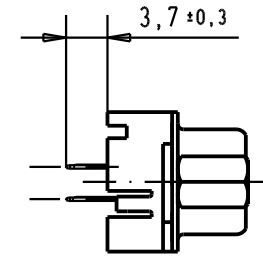
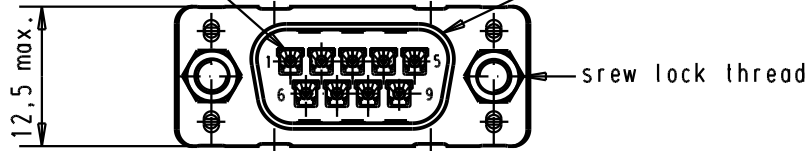
3

2

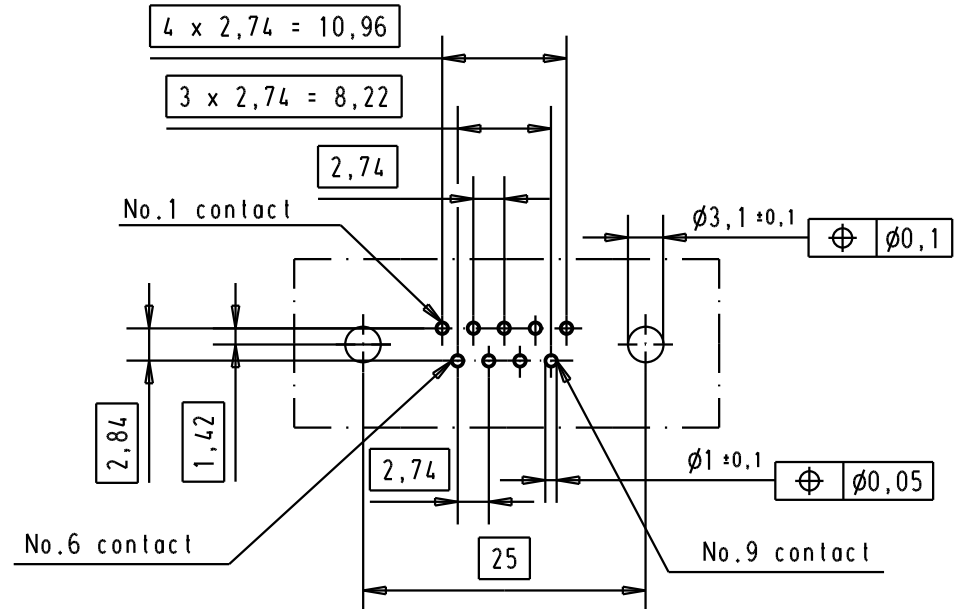
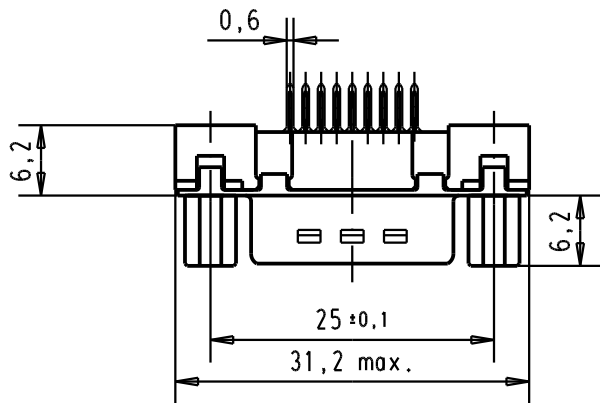
1

Mating face according to : MIL-C- / DIN 652 / CECC 75301-802

No. 1 contact



Printed board layout
component side





D

C

B

A

						Det.	Name	 All Dim. in mm Orig. Size DIN A 4	D-Sub, 9 poles, male, straight, with solder pins 3,7 and screw locks.	Moßstab/ Scale	
						Detail.	05/03/02			CV	1,5:1
						Insp.					
						Stand.					
09 65 121 3703	4-40 UNC	1							TB 09 65 121 X70x Sub.		
09 65 121 6703	4-40 UNC	2	31892	22/04/04	JH	HARTING EURL F-95972 Paris					
09 65 121 7703	4-40 UNC	3	29723	05/03/02	CV						
Part number	Screw lock thread	Performance level	Mod.	Det.	Name				Blatt/ Page 3		

Mouser Electronics

Authorized Distributor

Click to View Pricing, Inventory, Delivery & Lifecycle Information:

[HARTING:](#)

[09651217703](#) [09651216703](#)