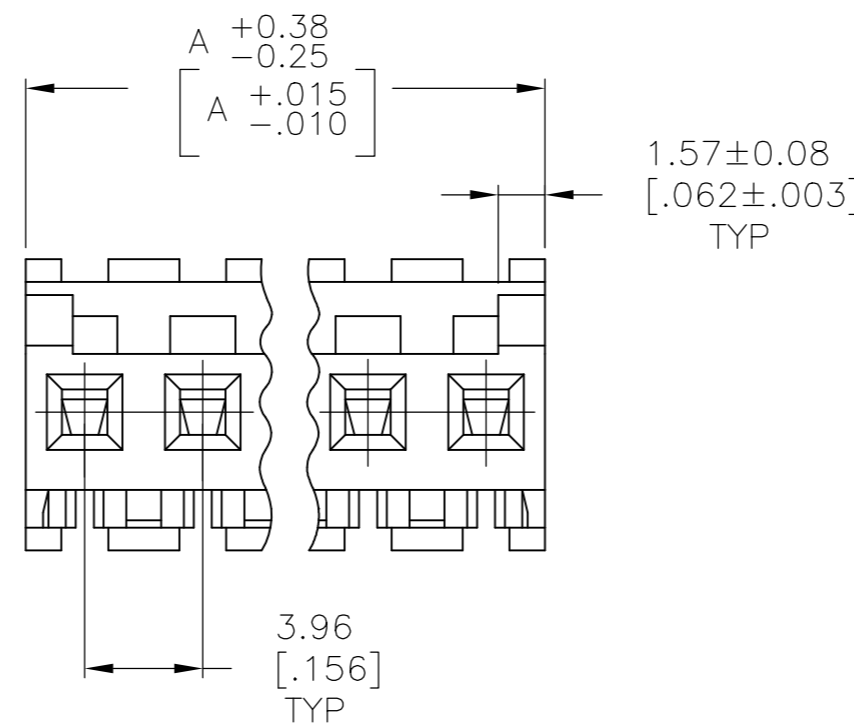
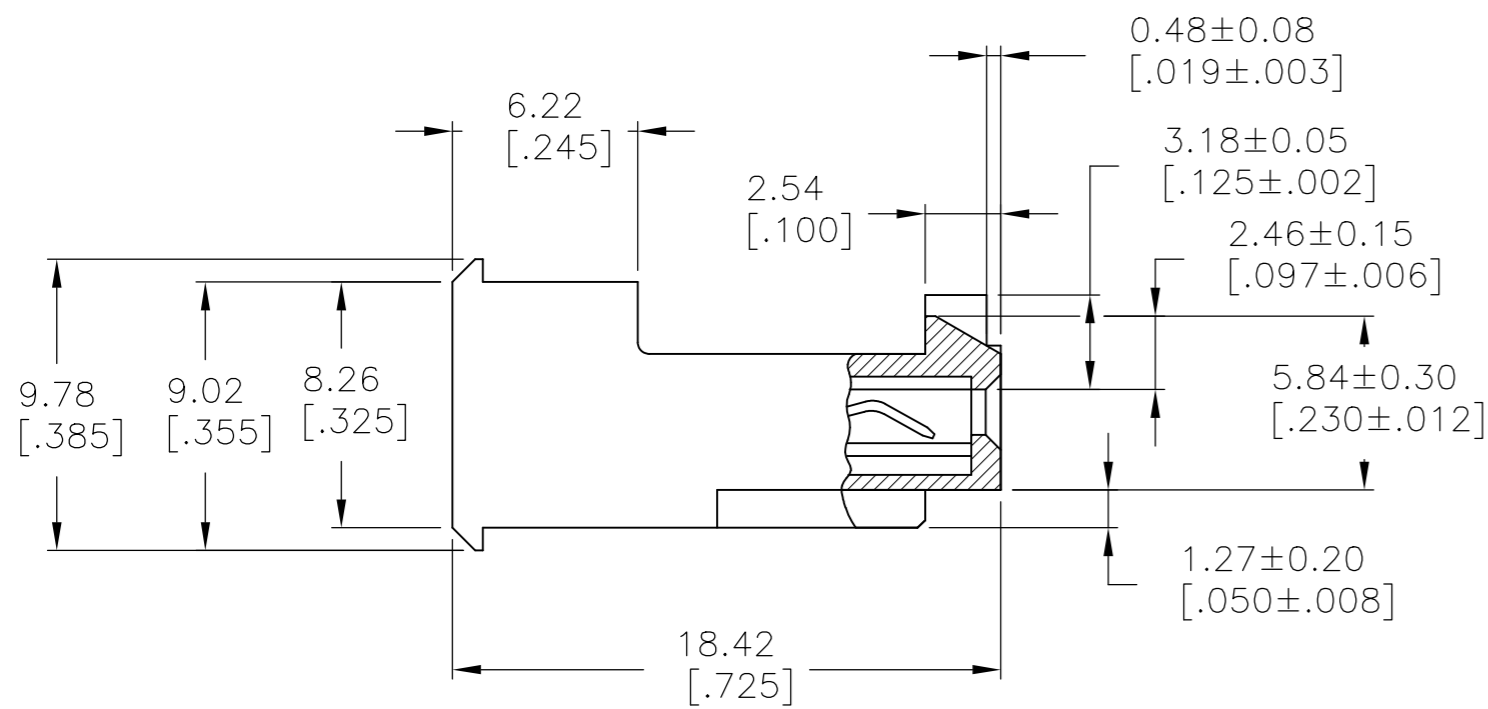
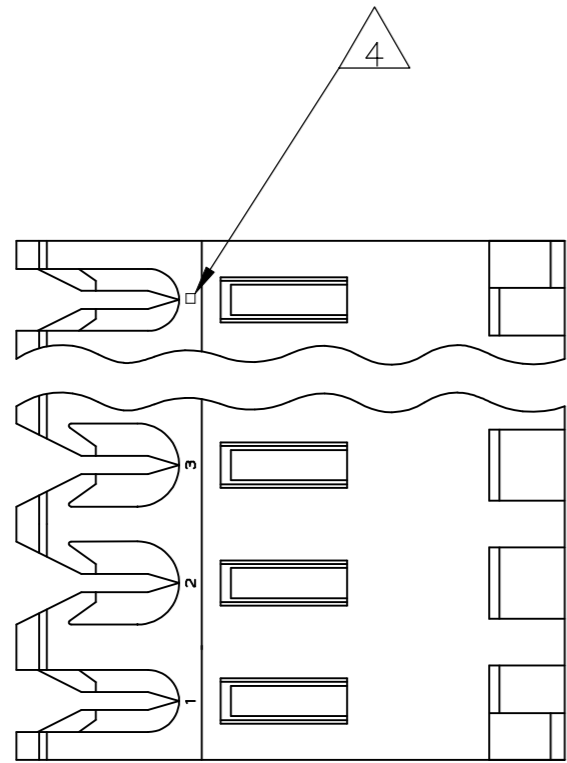


THIS DRAWING IS UNPUBLISHED. RELEASED FOR PUBLICATION  
 © COPYRIGHT - By - TE CONNECTIVITY ALL RIGHTS RESERVED.

| LOC | DIST | REVISIONS                 |           |     |      |
|-----|------|---------------------------|-----------|-----|------|
| P   | LTR  | DESCRIPTION               | DATE      | DWN | APVD |
| CM  | 54   |                           |           |     |      |
|     | D2   | REVISED PER ECR-17-018283 | 07FEB2018 | BDA | SG   |

- 1 MATERIAL: CONNECTOR - NYLON UL94V-2 (RED).  
CONTACTS - 0.30[.012] THICK COPPER ALLOY (BRIGHT TIN-LEAD 0.00203[.000080] MIN. THICK FOR CONTACTS 644467-2 THRU 1-644467-4) (MATTE WHISKER MITIGATED TIN 0.00203[.000080] MIN THICKNESS OVER NICKEL UNDERPLATE FOR 3-644467-2 THRU 4-644467-4).
- 2 CONTACTS ACCEPT 22 AWG WIRE WITH 2.41[.095] MAX INSULATION DIAMETER.
- 3 CONTACTS MUST ACCEPT 1.14±0.03[.045±.001] SQUARE POST AND REMAIN LOCKED IN POSITION.
- 4 IDENTIFICATION NUMBER FOR LAST CIRCUIT MAY NOT APPEAR ON ALL ASSEMBLIES.
- 5 DIMENSIONS IN BRACKETS ARE IN INCHES.
- 6 HOUSING FEATURES ARE: FEED-THRU WITH LOCKING RAMP AND POLARIZING TAB.
- 7 OBSOLETE PARTS: OBSOLETE CIS STREAMLINING PER D.RENAUD/D.SINISI
- 8 OBSOLETE PARTS



|              | DIM A         | NO. OF CIRCUITS | PART NO               |
|--------------|---------------|-----------------|-----------------------|
|              | 55.47 [2.184] | 14              | 4-644467-4            |
|              | 51.51 [2.028] | 13              | 4-644467-3            |
|              | 47.55 [1.872] | 12              | 4-644467-2            |
|              | 43.59 [1.716] | 11              | 4-644467-1            |
|              | 39.62 [1.560] | 10              | 4-644467-0            |
|              | 35.66 [1.404] | 9               | 3-644467-9            |
|              | 31.70 [1.248] | 8               | 3-644467-8            |
|              | 27.74 [1.092] | 7               | 3-644467-7            |
|              | 23.77 [.936]  | 6               | 3-644467-6            |
|              | 19.81 [.780]  | 5               | 3-644467-5            |
|              | 15.85 [.624]  | 4               | 3-644467-4            |
|              | 11.89 [.468]  | 3               | 3-644467-3            |
|              | 7.92 [.312]   | 2               | 3-644467-2            |
| 7 SUPERSEDED | 55.47 [2.184] | 14              | <del>1-644467-4</del> |
| 7 SUPERSEDED | 51.51 [2.028] | 13              | <del>1-644467-3</del> |
| 8 SUPERSEDED | 47.55 [1.872] | 12              | <del>1-644467-2</del> |
|              | 43.59 [1.716] | 11              | <del>1-644467-1</del> |
|              | 39.62 [1.560] | 10              | <del>1-644467-0</del> |
|              | 35.66 [1.404] | 9               | <del>644467-9</del>   |
| 7 SUPERSEDED | 31.70 [1.248] | 8               | <del>644467-8</del>   |
| 7 SUPERSEDED | 27.74 [1.092] | 7               | <del>644467-7</del>   |
| 8 SUPERSEDED | 23.77 [.936]  | 6               | <del>644467-6</del>   |
|              | 19.81 [.780]  | 5               | <del>644467-5</del>   |
|              | 15.85 [.624]  | 4               | <del>644467-4</del>   |
|              | 11.89 [.468]  | 3               | <del>644467-3</del>   |
|              | 7.92 [.312]   | 2               | <del>644467-2</del>   |

|  |        |                               |        |               |
|--|--------|-------------------------------|--------|---------------|
| THIS DRAWING IS A CONTROLLED DOCUMENT. |        | DWN<br>B. LEWIS<br>12 FEB 91  |        |               |
| DIMENSIONS: mm [INCHES]                |        | CHK<br>R. SWING<br>12 FEB 91  |        |               |
| TOLERANCES UNLESS OTHERWISE SPECIFIED: |        | APVD<br>D. CLARK<br>20 FEB 91 | NAME   |               |
| 0 PLC ± -                              |        | PRODUCT SPEC                  |        |               |
| 1 PLC ± -                              |        | 108-1051                      |        |               |
| 2 PLC ± -                              |        | APPLICATION SPEC              |        |               |
| 3 PLC ± -                              |        | 114-1020                      |        |               |
| 4 PLC ± -                              |        | WEIGHT                        | SIZE   | CAGE CODE     |
| ANGLES ± -                             |        |                               | A2     | 00779         |
| MATERIAL                               | FINISH | DRAWING NO                    |        | RESTRICTED TO |
| 1                                      | 1      | G-644467                      |        | -             |
| CUSTOMER DRAWING                       |        | SCALE                         | SHEET  | REV           |
|  |        | 4:1                           | 1 of 1 | D2            |

# Mouser Electronics

Authorized Distributor

Click to View Pricing, Inventory, Delivery & Lifecycle Information:

[TE Connectivity:](#)

[3-644467-6](#)