

LOC	DIST	REVISIONS					
		P	LTR	DESCRIPTION	DATE	DWN	APVD
AD	00		B4	REVISED PER ECO-14-017045	17FEB2015	NK	RH

SPECIFICATIONS:

BREAK-BEFORE-MAKE

MATERIAL:

SLIDER, GLASS FILLED NYLON, UL94-HB, BLACK.  
BASE, GLASS FILLED PBT, BLUE.  
COVER, GLASSSED FILLED PBT, BLUE.  
SLIDE PLATE, STAINLESS STEEL.  
ACTUATOR, PPS, BLACK.  
ROCKER CONTACT(GOLD), COPPER ALLOY, GOLD OVER NICKEL PLATING.  
ROCKER CONTACT(SILVER), COPPER ALLOY PLUS COINED SILVER.  
FIXED CONTACT/TERMINAL (GOLD), COPPER ALLOY, GOLD OVER NICKEL PLATE.  
FIXED CONTACT/TERMINAL(SILVER), COPPER ALLOY PLUS COINED SILVER, GOLD OVER NICKEL PLATE.

ELECTRICAL:

CONTACT RATING(SILVER)- 3A@115V AC OR 1.5A@230V AC  
CONTACT RATING(GOLD)- .4VA MAX@20V DC OR PEAK AC  
INITIAL CONTACT RESISTANCE - 20 MILLIOHMS MAX.  
INSULATION RESISTANCE- 1000 MEGOHMS MIN @ 500V DC  
DIELECTRIC STRENGTH- 500 V RMS@SEA LEVEL.  
LIFE EXPECTANCY- 30,000 OPERATIONS.

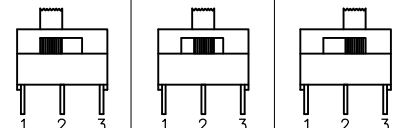
MECHANICAL:



OPERATING FORCE- 600±300 GRAMS.  
TRAVEL-.120

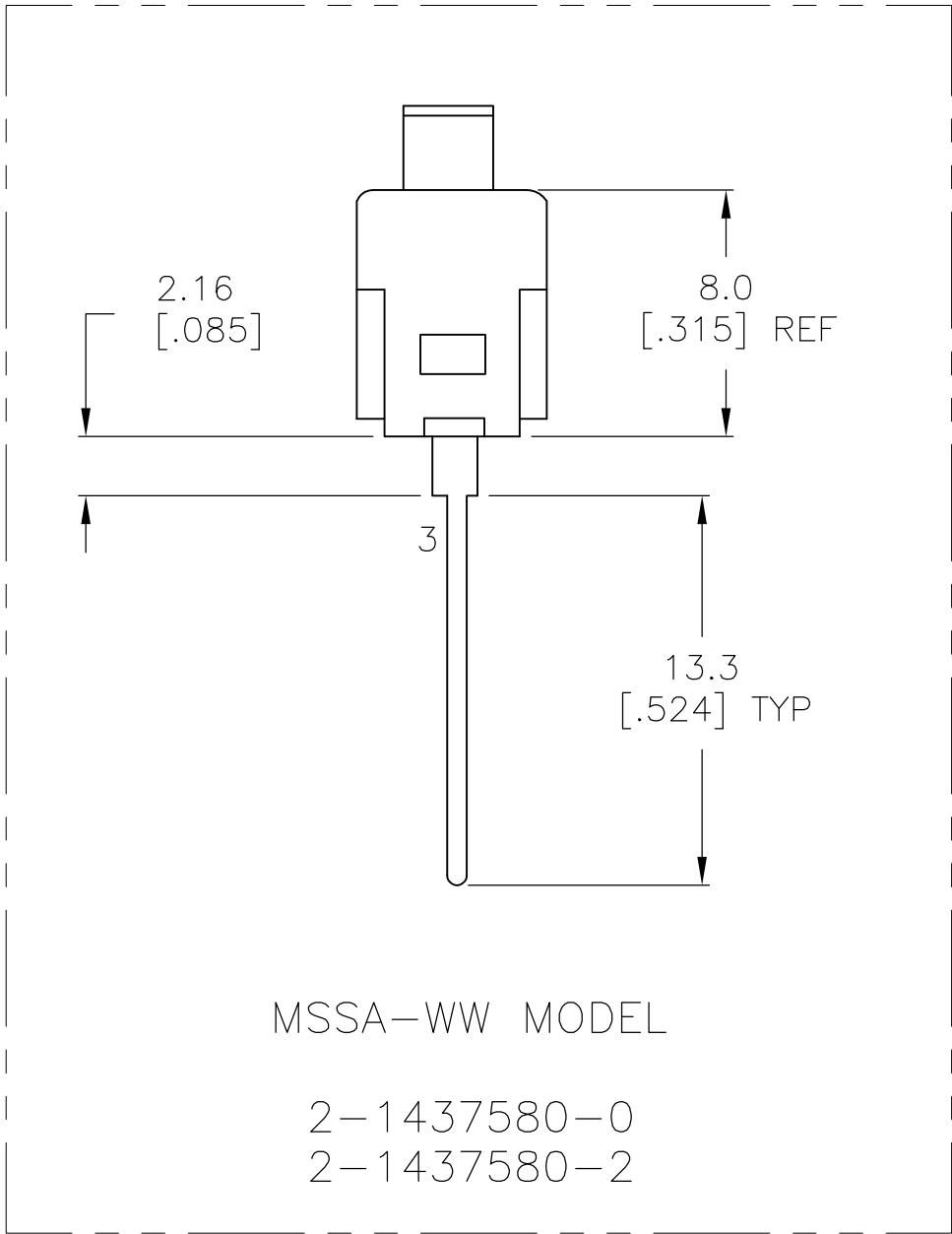
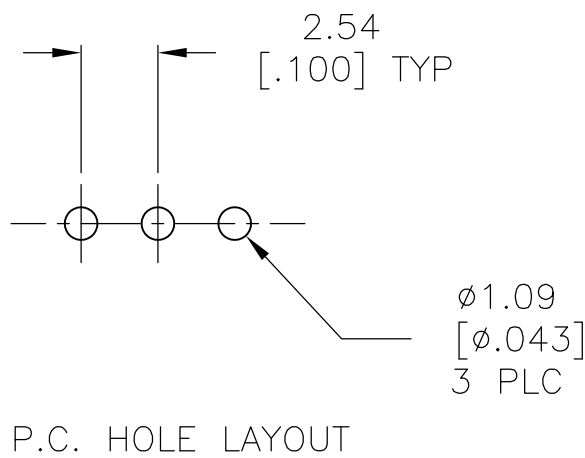
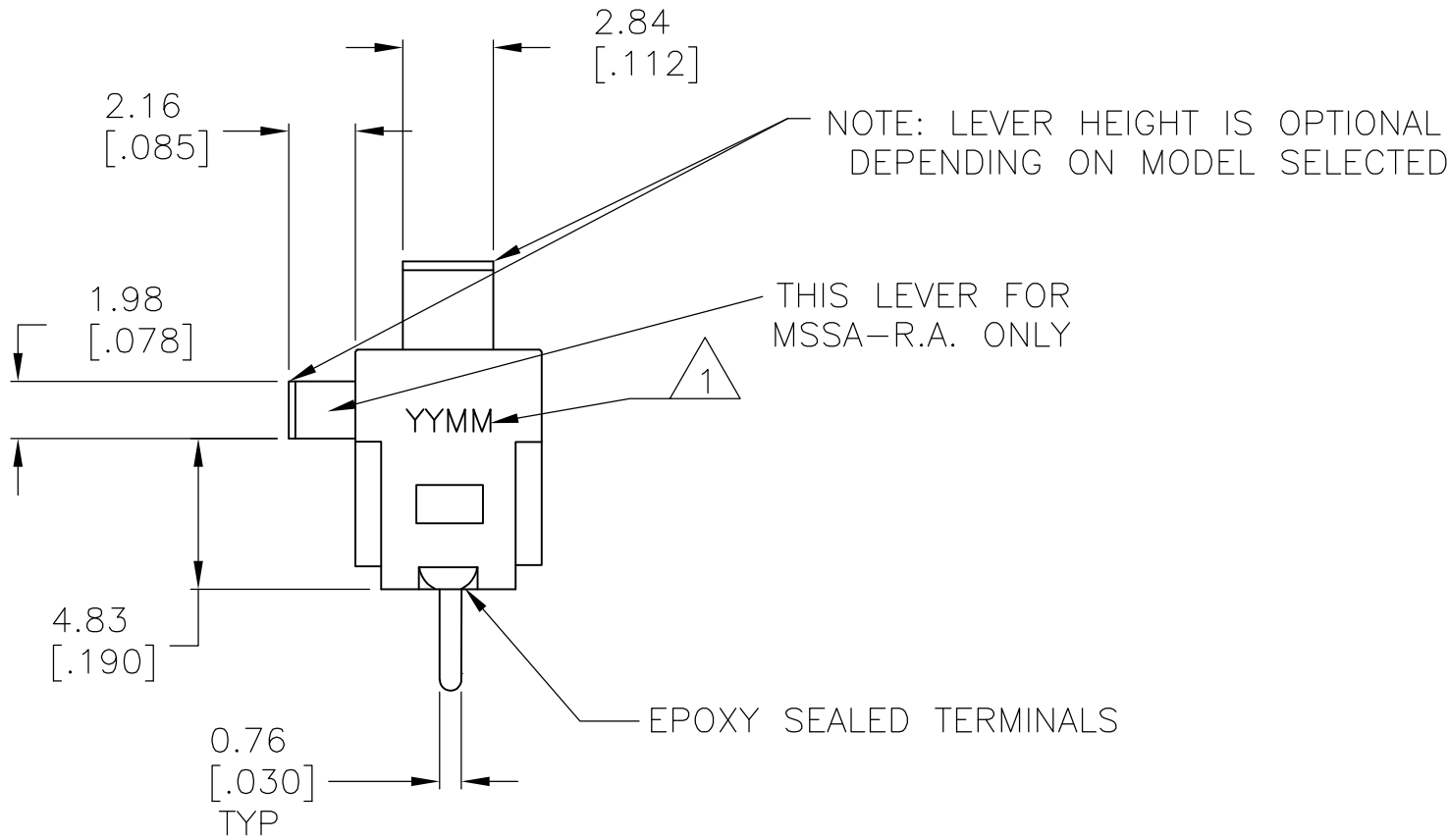
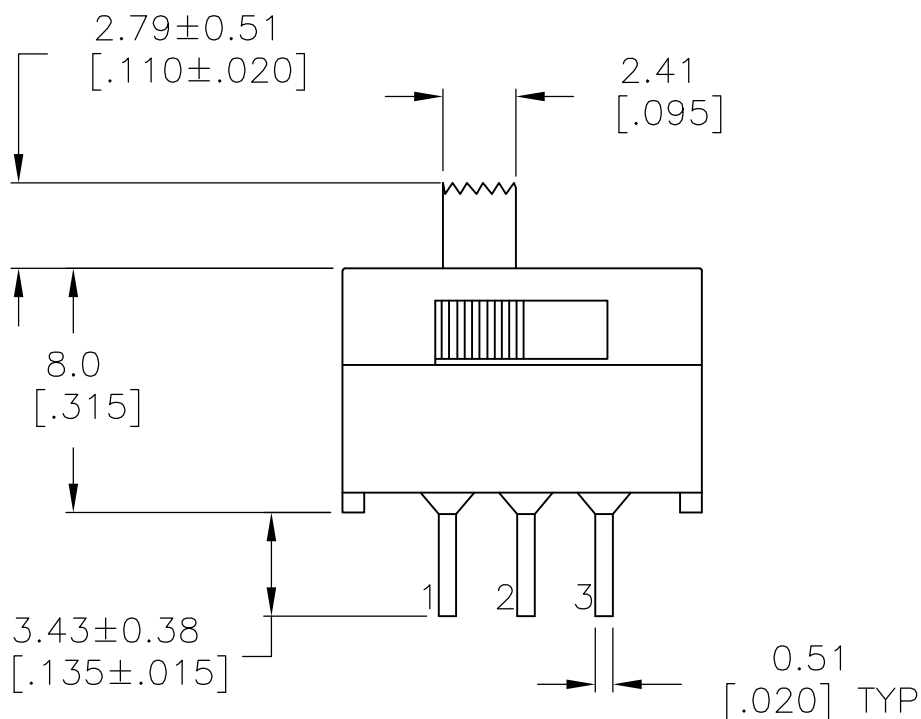
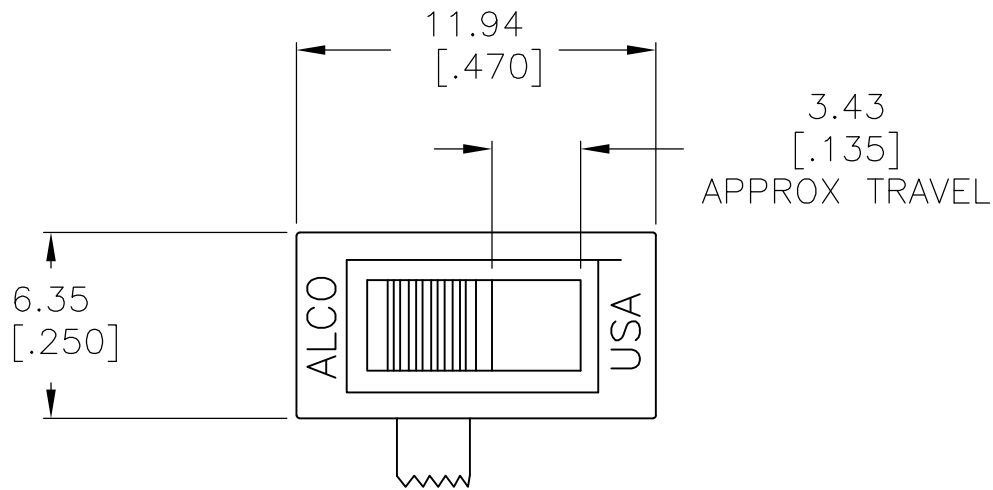
ENVIRONMENTAL:

OPERATING TEMPERATURE- -20°C TO +65°C  
STORAGE TEMPERATURE- -40°C TO +100°C  
SOLDER HEAT RESISTANCE- PER 109-202, CONDITION B.  
SOLDERABILITY PER EIA 364-52, CLASS 2, CATAGORY 1.

- 1
- DATE CODE MARKING YYMM (YEAR, MONTH).
- 
- 2
- OBSOLETE.

2	2,1	OFF	2,3	SILVER	MSSA104E	2-1437580-6
	-2,1	NONE	2,3	SILVER	MSSA104DRA	2-1437580-5
	2,1	NONE	2,3	SILVER	MSSA104D1	2-1437580-4
	2,1	NONE	2,3	SILVER	MSSA104D	2-1437580-3
	2,1	OFF	2,3	GOLD	MSSA101EGWW	2-1437580-2
	2,1	OFF	2,3	GOLD	MSSA101EGRA	2-1437580-1
	2,1	NONE	2,3	GOLD	MSSA101DGWW	2-1437580-0
	2,1	NONE	2,3	GOLD	MSSA101DGRA	1-1437580-9
	2,1	NONE	2,3	GOLD	MSSA101DG1	1-1437580-8
	2,1	NONE	2,3	GOLD	MSSA101DG	1-1437580-7
				PLATING	ALCO PART NO.	PART NO.

THIS DRAWING IS A CONTROLLED DOCUMENT.		DWN ROBERT.J.WINGROVE CHK —	23DEC80 30DEC80	 TE Connectivity			
DIMENSIONS: mm [INCHES]		TOLERANCES UNLESS OTHERWISE SPECIFIED:		NAME			
		APVD —		05JAN81			
		PRODUCT SPEC —		SLIDE SWITCH SP & SPRA			
		APPLICATION SPEC —					
		—					
		—					
MATERIAL —		FINISH —		SIZE A2	CAGE CODE 00779	DRAWING NO C=1-1437580-7	RESTRICTED TO —
		CUSTOMER DRAWING		SCALE 4:1	SHEET 1 of 1	REV B4	



MSSA-WW MODEL  
2-1437580-0  
2-1437580-2

# Mouser Electronics

Authorized Distributor

Click to View Pricing, Inventory, Delivery & Lifecycle Information:

[TE Connectivity:](#)

[MSSA101DGRA](#)